

RIPE59 - EIX-Working Group

INEX Update



i n e x
i n t e r n e t n e u t r a l e x c h a n g e

Nick Hilliard
Head of Operations
nick@inex.ie

Tedious Statistics



i n e x
i n t e r n e t n e u t r a l e x c h a n g e

Tedious Statistics



i n e x
i n t e r n e t n e u t r a l e x c h a n g e

- 42 full peering members

Tedious Statistics



i n t e r n e t n e u t r a l e x c h a n g e

- 42 full peering members
 - all members active though

Tedious Statistics



i n e x
i n t e r n e t n e u t r a l e x c h a n g e

- 42 full peering members
 - all members active though
- 13 associate members

Tedious Statistics



i n e x
i n t e r n e t n e u t r a l e x c h a n g e

- 42 full peering members
 - all members active though
- 13 associate members
- Traffic: ~4.5Gb/sec - up 125% in last year



Tedious Statistics

i n e x
i n t e r n e t n e u t r a l e x c h a n g e

- 42 full peering members
 - all members active though
- 13 associate members
- Traffic: ~4.5Gb/sec - up 125% in last year
- 67% of members use route servers



Tedious Statistics

i n e x
i n t e r n e t n e u t r a l e x c h a n g e

- 42 full peering members
 - all members active though
- 13 associate members
- Traffic: ~4.5Gb/sec - up 125% in last year
- 67% of members use route servers
 - Not every IXP member is large



Tedious Statistics

i n e x
i n t e r n e t n e u t r a l e x c h a n g e

- 42 full peering members
 - all members active though
- 13 associate members
- Traffic: ~4.5Gb/sec - up 125% in last year
- 67% of members use route servers
 - Not every IXP member is large
 - But we appreciate that many organisations have good reasons not to use route servers



Tedious Statistics

i n e x
i n t e r n e t n e u t r a l e x c h a n g e

- 42 full peering members
 - all members active though
- 13 associate members
- Traffic: ~4.5Gb/sec - up 125% in last year
- 67% of members use route servers
 - Not every IXP member is large
 - But we appreciate that many organisations have good reasons not to use route servers
 - Our policy is:

Use the route servers

...unless you have a good reason not to



New PoP in Interxion DUB1

i n e x
i n t e r n e t n e u t r a l e x c h a n g e

- New PoP opening for production next week
- Previously used Cisco C6500 switches, but new PoP uses Brocade kit:
 - Fibre connections on Turbolron TI24X using SFP+ and SFP
 - Copper 10/100/1000 on FES-X 624
- WDM using Transmode TM series transponders
 - Not enough power on SFP+ to drive 10G at 20km+
- Lots of benefits over C65k
 - lower cost, power consumption, etc
 - equipment choice scales to the extent that we need it to This
 - Meets all our technical requirements
 - well, actually TI24X needs IPv6 L3 filtering
- This design will not scale at all IXPs



Shiny New Equipment

i n e x
i n t e r n e t n e u t r a l e x c h a n g e

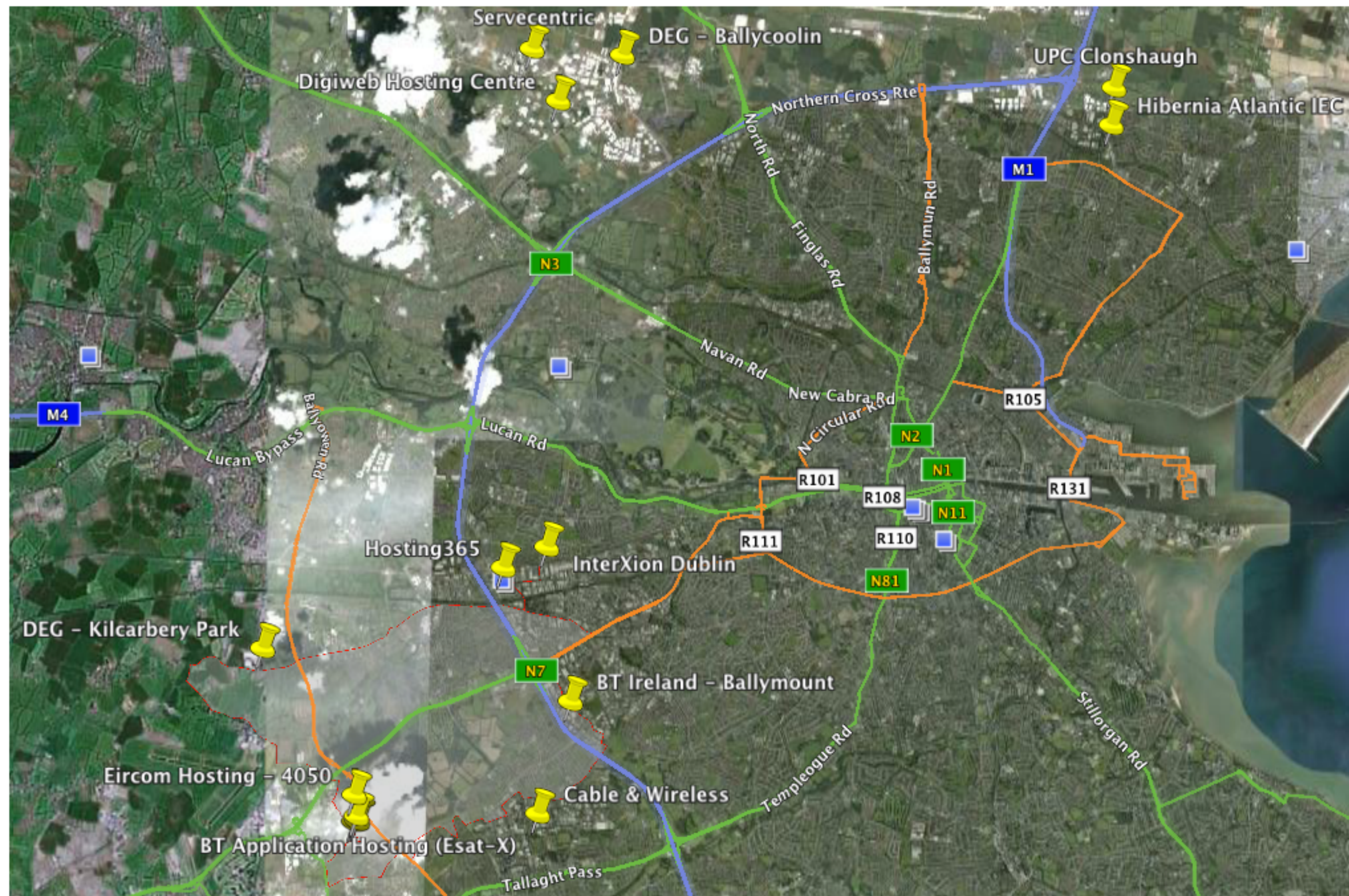


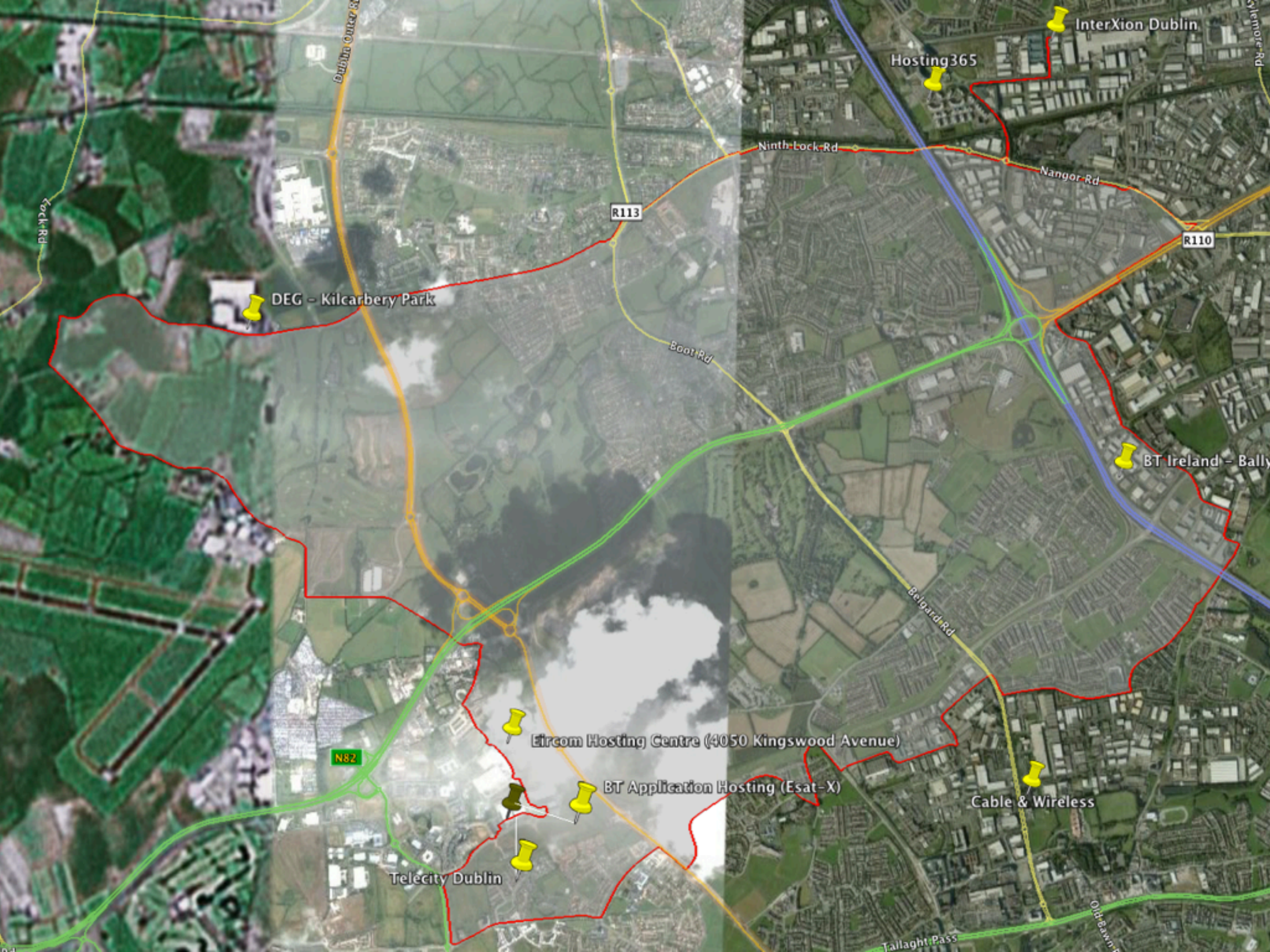


innex
internet neutral exchange

Shiny New Equipment







InterXion Dublin

Hosting365

DEG - Kilcarbery Park

BT Ireland - Bally

Eircom Hosting Centre (4050 Kingswood Avenue)

BT Application Hosting (Esat-X)

Cable & Wireless

Telecity Dublin

R113

R110

N82

Kock Rd

Dublin Outer B

Ninth Lock Rd

Nangor Rd

Boat Rd

Belgard Rd

Tallaght Pass

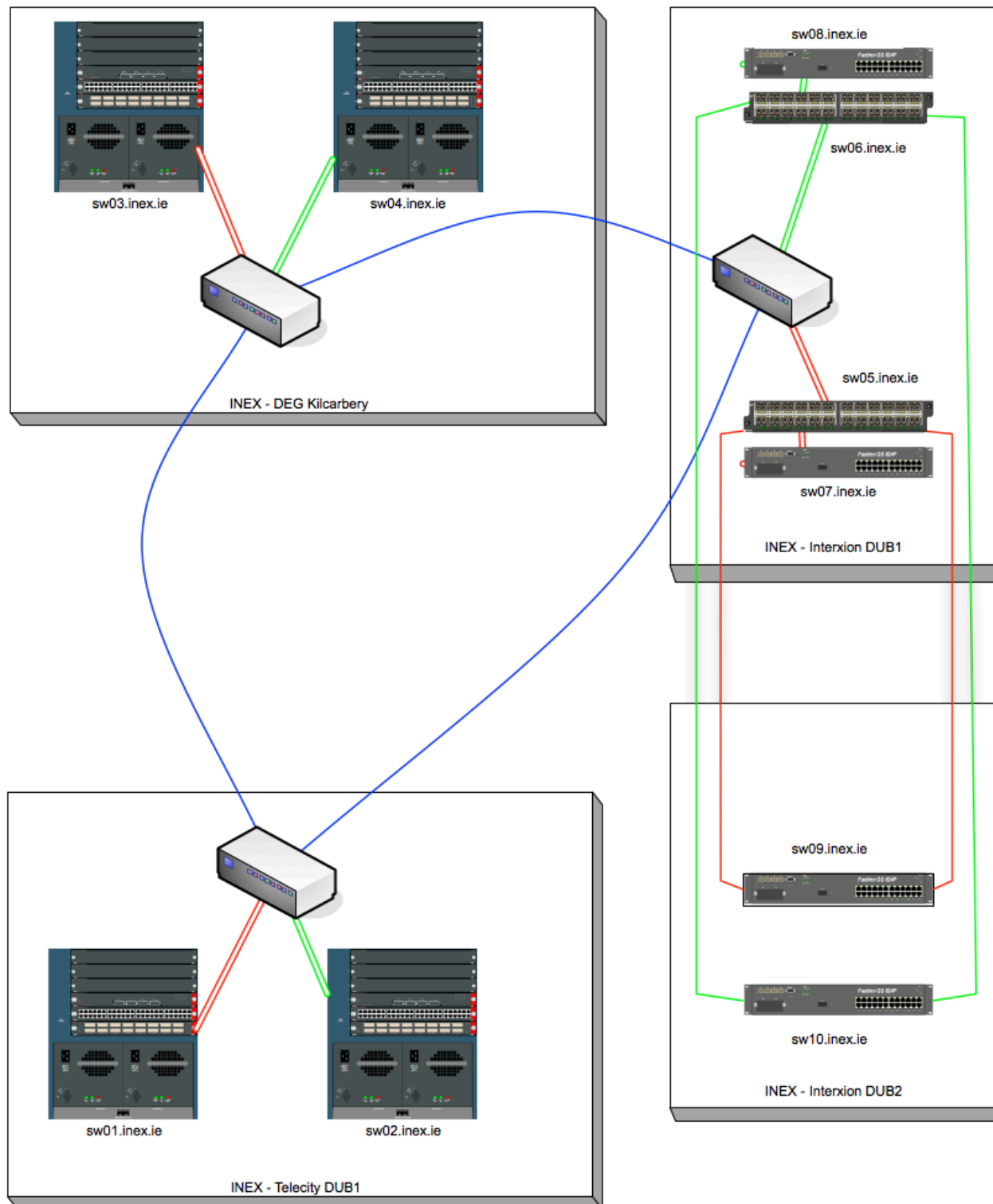
Old Bawn P

Stemore Rd



Network Layout

i n e x
i n t e r n e t n e u t r a l e x c h a n g e



Operations Summary



i n e x
i n t e r n e t n e u t r a l e x c h a n g e

That's all folks...

...any questions?