

NetSense Uncovered

Vasco Asturiano
Information Services, RIPE NCC

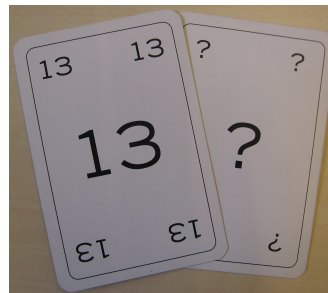


NetSense

NetSense – Project Approach

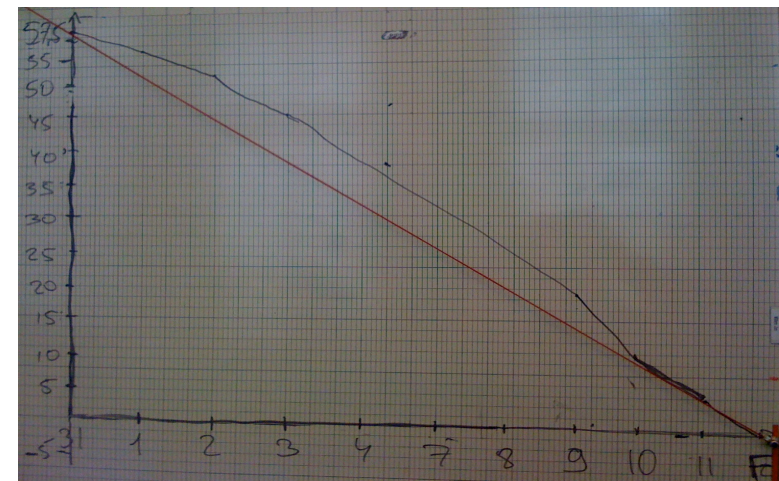
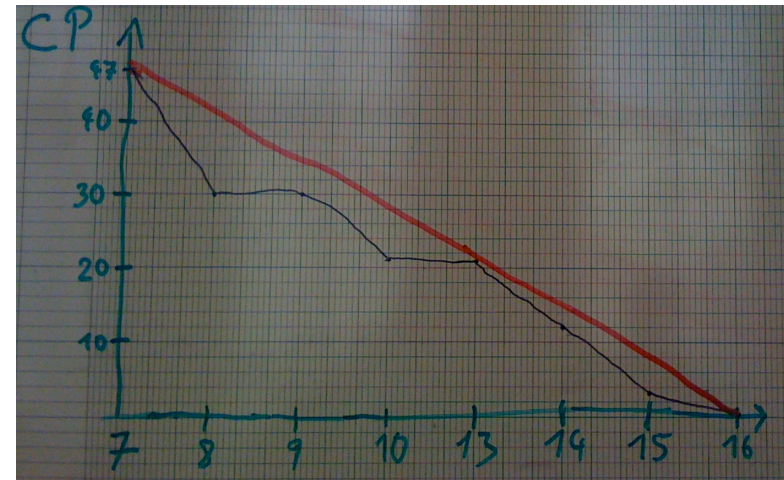
SCRUM methodology

- Agile software development
- 5 people team
- Started 20th July 2009
- 2 week iterations with functional demos each time



NetSense – Scrumming

- 6.5 sprints
- 51 user stories
- 331 complexity points



NetSense – Design

- Focused on intuitive and pleasant interface
- Outsourced styling
- Initial release functionality
 - Global Connectivity Health
 - AS Dashboard
 - BGP Visibility
 - Routing Registry Consistency



NetSense – Design



Sign in ▾

Find out information about your AS or Prefix

AS3333



Sense

Send us feedback

This is the **RIPE NCC AS3333** ?

Prefix <>	Last Seen <>
193.0.0.0/21	2 hours ago
193.0.18.0/23	1 hour ago
193.0.12.0/23	15 minutes ago
193.0.20.0/23	3 months ago
2001:610:240::/42	5 minutes ago

1 - 2 - 3 - ... - 8 - 9

2 Inconsistencies



Stability Visibility ?
Showing data for 193.0.12.0/23



Routing Consistency ?

Don't filter All inconsistencies Routing Table Database

BGP Routing Table <>

193.0.0.0/21	Not present
Not found	193.0.18.0/23
193.0.12.0/23	193.0.12.0/23
193.0.20.0/23	193.0.20.0/23
2001:610:240::/42	2001:610:240::/42

1 - 2 - 3 - ... - 8 - 9

Wireframe

RIPE NCC NetSense

193.0.0.0/21 2009
193.0.12.0/23 193.0.18.0/23 193.0.20.0/23

Quick Links

You Are Here: [Home](#) -> [NetSense](#)

Find out information about your AS or Prefix

3333

Sense

AS3333 - RIPE-NCC RIPE Network C... ?

Prefix	First Seen	Last Update
193.0.0.0/21	20 Mar 2009	in 12 hours time
193.0.12.0/23	20 Mar 2009	in 12 hours time
193.0.18.0/23	20 Mar 2009	in 12 hours time
193.0.20.0/23	20 Mar 2009	in 12 hours time
2001:610:240::/42	20 Mar 2009	in 12 hours time



Routing Consistency ▶

Origin Prefixes ▾

Import Peers

Export Peers

- Ok
- Not present
- Not found

BGP Routing Table :

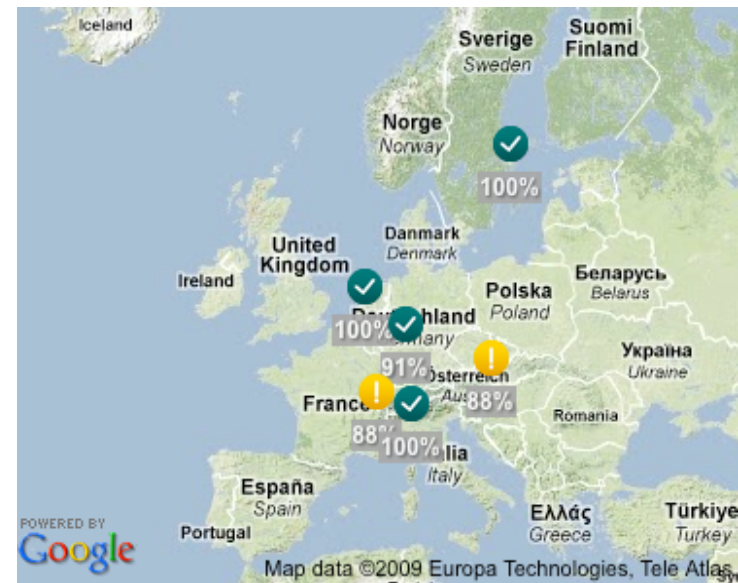
Ripe Database :

193.0.12.0/23	193.0.12.0/23	Ok ✓
193.0.0.0/21	193.0.0.0/21	Ok ✓
193.0.20.0/23	193.0.20.0/23	Ok ✓
193.0.18.0/23	193.0.18.0/23	Ok ✓
Not Found	2001:610:240::/42	Not found ✗

Final

NetSense – Technologies

- Apache Wicket framework
- Components written in Java
- AJAX loading
- Google Maps API



NetSense

Live Demo

Find out information about your AS or Prefix

Sense





NetSense – Upcoming features

- Global packet delay & root servers reachability
- Regional connectivity health
- Global routing table stats (growth / distribution)
- Single sign-on integration and alarm creation
- Geographical BGP stability
- Updates visualization
- AS transits
- BGP more/less specific prefix list
- Prefix list time-machine and size distribution
- Your suggestion?



NetSense

- Feedback to netsense@ripe.net
- More demonstration and info at the Information Services **Demo Stand**
 - Today: after Test-Traffic WG session
 - Thursday: 12:30-14:00 & 15:00-16:00

<http://netsense.ripe.net>

Questions?

