



# LINX News

RIPE 49 EIX WG  
(Sunny) Manchester  
Mike Hughes



# Disclaimer

---

- We are unable to guarantee that this presentation will not contain an MRTG/RRD traffic graph...



**LINX**

# Breaking News

---



**LINX**<sup>™</sup>

# Breaking News

---

# 40 Gig/sec

Aggregate Peak Traffic - Monday 20<sup>th</sup> September

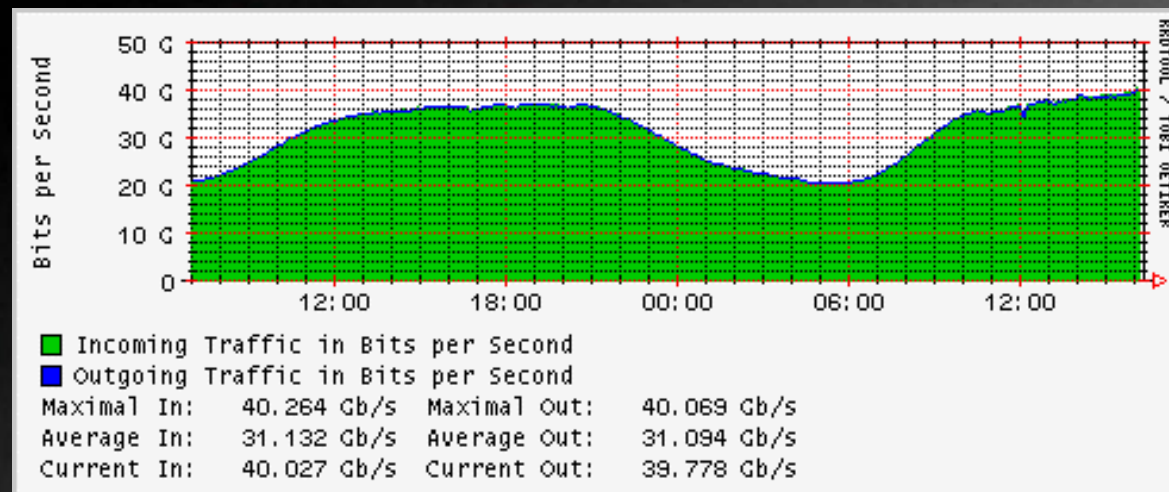


**LINX**

# Breaking News

# 40 Gig/sec

Aggregate Peak Traffic - Monday 20<sup>th</sup> September



# Membership

---

- LINX membership continues to grow
  - 162 members
  - ahead of projected growth
  - overall net growth despite
- Members from 27 different countries
  - Recent new countries
    - Russia, Malaysia, Estonia, Greece

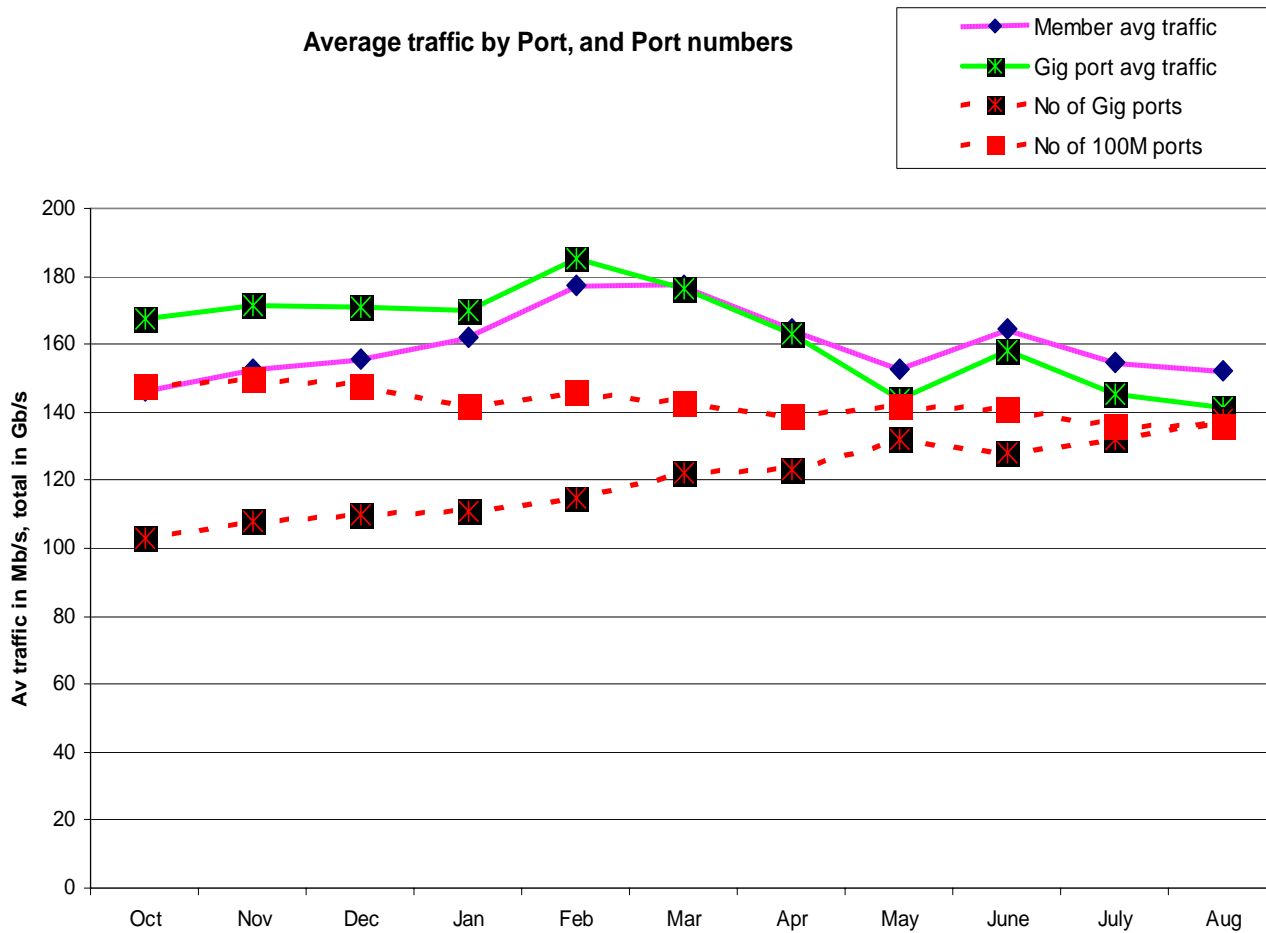
# Associate Membership

---

- Tidies up status of existing researchers and non-profit activities at LINX
  - e.g. RIPE NCC RIS, Route-Views, PCH, etc.
- Only for organisations which are not ISPs in the typical sense
  - Researchers, route-collectors, other non-ISP-type activities (i.e. very low traffic).
- Admitted by the LINX Council
  - Not via the standard “endorsement” process



# Port Trends





# Technical News

---

- Foundry Platform Upgrade
  - Initially slow progress – “bleeding edge”
  - Almost completed
    - JetCore BigIron 8000/15000 and MG8
- Extreme Platform
  - Still BD6808/MSM3
  - Some reliability problems during the Summer
  - Researching upgrade paths for this platform

# Bigger than a Gig?

---

- Some members need ports bigger than 1Gig
- Experience using LACP across multiple GE ports gained during the summer with BBC
  - On both platforms
  - With Cisco 76xx on BBC side
- 10GE ports available on MG8
  - No takers as yet...

# New Prices for 2004/5

---

- Drop in fees for most members
  - Joining fee down to £1000 from £2500
  - Membership down to £2500 pa
  - Port fees down
  - Traffic charge percentage reduced
  - Second 100M port free
  - Second 1G port @ 25% discount
    - Encourage members to run equally on both fabrics

# Questions?

---



**LINX**<sup>™</sup>