

Matthew Williams

Subject: Web Access Report for the Routing Information Service - November, 2004

Web Access Report for the Routing Information Service - November, 2004

* Monthly Totals for November, 2004 (month-on-month changes within brackets):

Hits	Files	Pages	Visits	Sites	KBytes
1274715 (-32%)	1088960 (-40%)	569628 (-19%)	29469 (+2%)	7030 (+6%)	90675745 (-18%)

Comments:

The RIS sites have registered a total of 1274715 hits throughout 29469 visits in November, down 32% and up 2% respectively since the last report. The sites saw around 90 gigabytes of HTTP traffic, which is approximately 20 gigabytes less than in October.

Please observe that the values above also include internal use.

* Daily Values for <http://www.ris.ripe.net/>:

	Avg	Max
Hits per Hour	1227	4895
Hits per Day	29453	44161
Files per Day	23818	36684
Pages per Day	15390	27806
Visits per Day	940	1446
KBytes per Day	329603	438637

* Daily Values for <http://data.ris.ripe.net/>:

	Avg	Max
Hits per Hour	543	8904
Hits per Day	13037	25133
Files per Day	12480	24614
Pages per Day	3596	6686
Visits per Day	41	59
KBytes per Day	2692921	7076698

Comments:

The RIS portal, <http://www.ris.ripe.net/>, had little more than 20 times more visits per day than <http://data.ris.ripe.net/>, our download site. This is the normal trend seen over the past three months. Around 2.7 gigabytes of RIS raw data were downloaded during an average day in November, down 0.5 gigabytes since October.

The maximum value indicates that the daily traffic can vary to a high extent over the entire month.

* Most Popular URLs for <http://www.ris.ripe.net/>:

#	Hits		Kbytes		URL
1	336017	38.03%	3843796	38.87%	/cgi-bin/lg/
2	272299	30.82%	291068	2.94%	Images
3	38407	4.35%	320977	3.25%	/css/ripe-ncc.css
4	38244	4.33%	314497	3.18%	/css/ncc-ns4.css
5	37624	4.26%	948	0.01%	/css/print.css
6	16483	1.87%	192601	1.95%	/cgi-bin/asinuse.cgi
7	6288	0.71%	259479	2.62%	/cgi-bin/instatus.cgi
8	6071	0.69%	2852798	28.85%	/cgi-bin/risprefix.cgi
9	2237	0.25%	115	0.00%	/bgplay/applet.html
10	2105	0.24%	26059	0.26%	/cgi-bin/riswhois.cgi

* Most Popular URLs By Kbytes for <http://data.ris.ripe.net/>:

#	Hits		Kbytes		URL
1	9761	2.50%	4907155	6.07%	/rrc07/2004.11/
2	9763	2.50%	4905888	6.07%	/rrc03/2004.11/
3	5739	1.47%	3379253	4.18%	/rrc00/2004.11/
4	5527	1.41%	3199684	3.96%	/rrc10/2004.11/
5	5529	1.41%	3198876	3.96%	/rrc05/2004.11/
6	5524	1.41%	3197244	3.96%	/rrc04/2004.11/
7	5534	1.41%	3179534	3.94%	/rrc01/2004.11/
8	5442	1.39%	3144871	3.89%	/rrc11/2004.11/
9	5525	1.41%	2761995	3.42%	/rrc06/2004.11/
10	8615	2.20%	2211683	2.74%	/rrc00/1999.10/updates.19991008.1103.gz

Comments:

The list over URLs for <http://www.ris.ripe.net/> gives us a good indication of which queries are used by site visitors. The Looking Glass was our most popular query type followed by ASinuse.

* Top 15 External Sites Visiting <http://www.ris.ripe.net/>:

#	Hits		Files		Kbytes		Visits		Hostname
1	63176	7.15%	63176	8.84%	706418	7.14%	2	0.01%	baileys.gnsnet.net
2	35704	4.04%	35704	5.00%	431541	4.36%	1	0.00%	nocserv04.foreshore.net
3	21862	2.47%	21862	3.06%	228475	2.31%	1	0.00%	statistics.jtibs.net
4	19207	2.17%	18375	2.57%	147613	1.49%	33	0.12%	i7072.upc-i.chello.nl
5	15826	1.79%	15826	2.21%	184113	1.86%	1	0.00%	m09.itconsult.net
6	15796	1.79%	13022	1.82%	59144	0.60%	1	0.00%	p508cbf4d.dip.t-dialin.net
7	15796	1.79%	11488	1.61%	58911	0.60%	1	0.00%	pd9565974.dip.t-dialin.net
8	15785	1.79%	11480	1.61%	58869	0.60%	1	0.00%	p508cb134.dip.t-dialin.net
9	15785	1.79%	11480	1.61%	58870	0.60%	1	0.00%	p508cb90b.dip.t-dialin.net
10	15785	1.79%	14356	2.01%	61710	0.62%	1	0.00%	pd9565916.dip.t-dialin.net
11	15774	1.79%	11472	1.61%	56669	0.57%	1	0.00%	p508c9eef.dip.t-dialin.net
12	15774	1.79%	12906	1.81%	58875	0.60%	1	0.00%	p508c9fd3.dip.t-dialin.net
13	15774	1.79%	11472	1.61%	58829	0.59%	1	0.00%	p508ca0f4.dip.t-dialin.net
14	15774	1.79%	11472	1.61%	58829	0.59%	1	0.00%	p508ca372.dip.t-dialin.net
15	15774	1.79%	11472	1.61%	58829	0.59%	1	0.00%	p508ca42b.dip.t-dialin.net

* Top 15 External Sites Visiting <http://data.ris.ripe.net/> by Kbytes:

#	Hits		Files		Kbytes		Visits		Hostname
1	174536	44.63%	168132	44.91%	49049269	60.71%	76	6.04%	tocai.dia.uniroma3.it
2	95819	24.50%	95075	25.39%	4832089	5.98%	30	2.38%	titan.cs.ucla.edu
3	46468	11.88%	46459	12.41%	4507972	5.58%	1	0.08%	156.80.189.41(bah.com)
4	770	0.20%	383	0.10%	4386665	5.43%	3	0.24%	ubi7.imc.pi.cnr.it
5	8615	2.20%	8615	2.30%	2211683	2.74%	0	0.00%	oma.minbzk.nl
6	5873	1.50%	5872	1.57%	783323	0.97%	2	0.16%	linkrank.cs.ucla.edu
7	5873	1.50%	5870	1.57%	761851	0.94%	2	0.16%	kings.cs.ucla.edu
8	280	0.07%	256	0.07%	653739	0.81%	8	0.64%	217.107.221.75(rtcomm.ru)
9	90	0.02%	90	0.02%	472930	0.59%	30	2.38%	nubian.blitzed.org
10	2958	0.76%	2949	0.79%	465710	0.58%	3	0.24%	testbedrouter.ecse.rpi.edu
11	30	0.01%	28	0.01%	423282	0.52%	0	0.00%	radb3.merit.edu
12	8083	2.07%	8080	2.16%	411499	0.51%	1	0.08%	141.225.9.167(memphis.edu)
13	586	0.15%	585	0.16%	380309	0.47%	1	0.08%	61.187.54.13(hnpta.net.cn)
14	8608	2.20%	8596	2.30%	363945	0.45%	8	0.64%	cable.mindspring.com
15	162	0.04%	101	0.03%	309765	0.38%	6	0.48%	howard01.md.comcast.net

* Countries by Amount of Hits for RIS Web Sites (excluding network *.ripe.net):

#	Hits	Country	Previous Month
1	187893	Italy	US Educational
2	149614	Unresolved/Unknown	Italy
3	118995	US Educational	Unresolved/Unknown
4	115839	US Commercial	Turkey
5	61748	Netherlands	US Commercial
6	33318	Turkey	Germany
7	15567	Japan	Netherlands
8	14337	Austria	Switzerland
9	9527	Switzerland	Japan
10	7929	Germany	Austria

(aggregate hits for <http://www.ripe.net/> & <http://data.ripe.net/>)

Comments:

Unchanged since last month, University Rome Tre and the University of California were our most prolific downloaders of RIS data, while Italy claimed the place as our top 'Country of Origin' listing. The extensive numbers of entries from t-dialin.net are mystifying. We'll need to investigate further if it continues into next month.

Note that most of the unresolved 'hits' were caused by nodes in the .com gTLD.

CGI Statistics:

* Usage of ASinuse utility:

AS number	Hits	
5561	120	Elender Business Communications Ltd, Hungary
3333	85	RIPE NCC
34125	43	Bechtle GmbH & Co. KG, Germany
16256	41	JSC ReCom, Russia
34168	24	JSC CenterTelecom, Russia

* Usage of AS Query:

AS number	Hits	
3333	42	RIPE NCC
137	24	GARR Italian academic and research network
11240	21	Alma Telephone Co., Inc, USA
1967	9	Middle East Technical University, Turkey
3235	9	KORUS.ISP NOC, Russia

* Usage of Prefix Query (excl. RIS Routing Beacons):

Prefix	Hits	
193.204.0.0/15	192	GARR Italian Research and Academic Network
193.27.64.0/23	126	RealROOT NOC, Belgium
198.76.51.0/24	105	National Archives and Records Administration, USA
195.35.96.0/24	84	BanifServ, Portugal
192.82.230.0/24	63	img Consultants, Australia

See URL for CGI statistics: <http://www.ripe.net/ris/stat/DB/>

Comments:

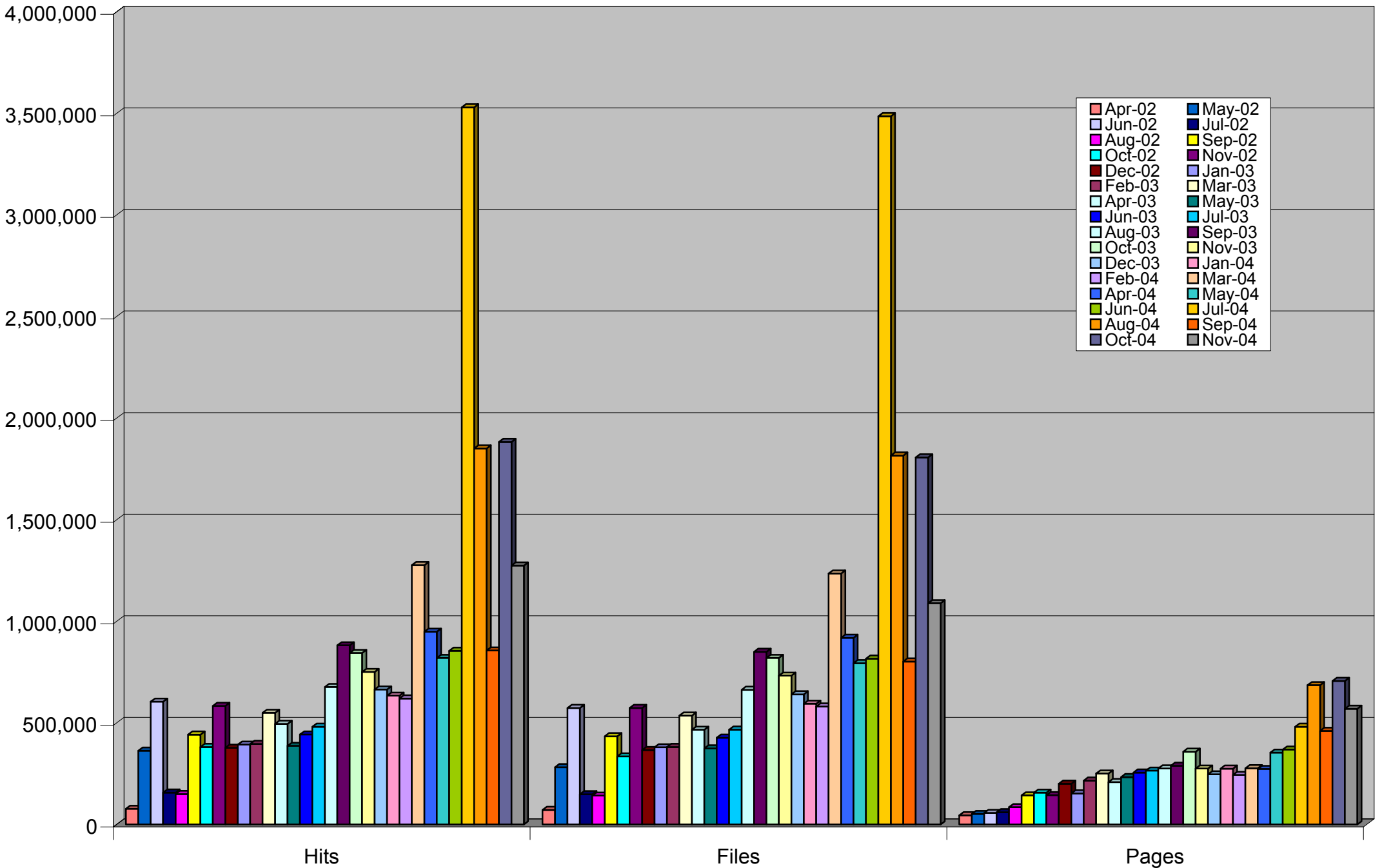
The monthly report always includes an overview of the AS numbers and prefixes used in RIS queries. This overview can roughly identify RIS query users and also help us understand how the utilities are used in the real world. AS3333 and CIDR prefix 193.0.0.0/21 are defaults in the AS Query and Prefix Query respectively, which may inflate their hit count.

Questions about "hits", "files", "sites" etc?

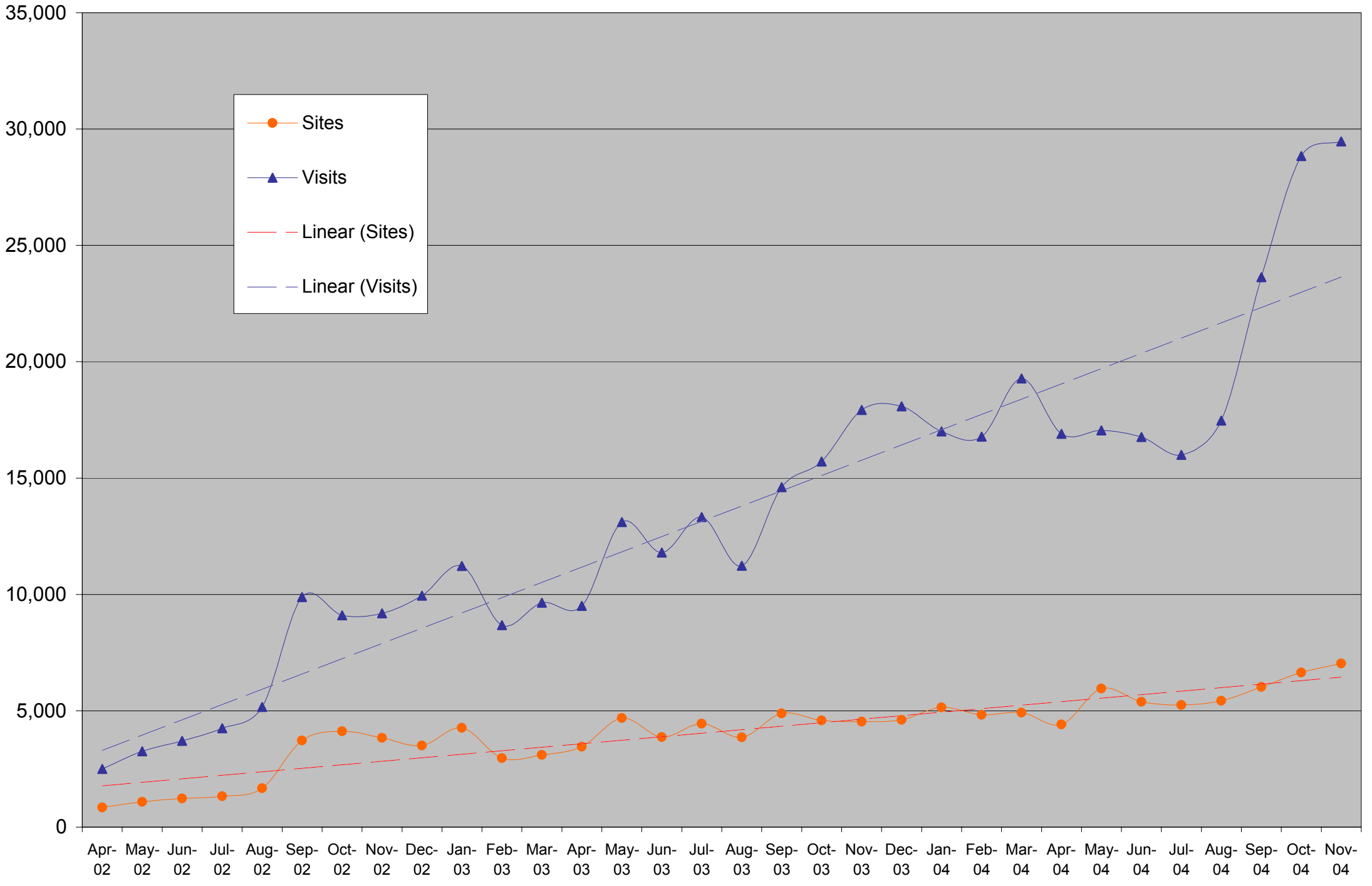
Please see URL: http://www.webalizer.com/webalizer_help.html

> Matthew Williams (MW243-RIPE)
> Customer Liaison Engineer
> RIPE NCC (<http://www.ripe.net/np/>)np/

Hits, Files and Pages per Month for RIS Web Sites



Sites and Visits per Month for RIS Web Sites (aggregate values)



Kbytes per Day for RIS Raw Data Site

