

Matthew Williams

Subject: Web Access Report for the Routing Information Service - October, 2004

Web Access Report for the Routing Information Service - October, 2004

* Monthly Totals for October, 2004 (month-on-month changes within brackets):

Hits	Files	Pages	Visits	Sites	KBytes
1883383(+120%)	1806927(+125%)	706862(+53%)	28840(+22%)	6644(+10%)	110184463(+15%)

Comments:

The RIS sites have experienced a total of 1883383 hits during 28840 visits in October, up 120% and 22% respectively since the last report. The sites generated around 110 gigabytes of HTTP traffic, which is approximately 14 gigabytes more than in September.

Please observe that the values above also include internal use.

* Daily Values for <http://www.ris.ripe.net/>:

	Avg	Max
Hits per Hour	956	5223
Hits per Day	22948	34804
Files per Day	20880	31633
Pages per Day	19669	30793
Visits per Day	889	1475
KBytes per Day	288692	579729

* Daily Values for <http://data.ris.ripe.net/>:

	Avg	Max
Hits per Hour	1575	19831
Hits per Day	37806	422115
Files per Day	37407	421669
Pages per Day	3132	4815
Visits per Day	41	57
KBytes per Day	3265645	13214893

Comments:

The RIS portal, <http://www.ris.ripe.net/>, had around 20 times more visits per day than <http://data.ris.ripe.net/>, our download site. The normal trend used to be a factor between seven and eight. However, over the past three months, there has been a significant shift from 16k to 27k visits per month wrt the Portal/CGI site. Around 3.2 gigabytes of RIS raw data were downloaded throughout an average day in October, more or less stable since September.

The maximum value indicates that the daily traffic can vary to a high degree over the entire month.

* Most Popular URLs for <http://www.ris.ripe.net/>:

#	Hits		Kbytes		URL
1	467226	65.68%	2966358	33.15%	/cgi-bin/lg/
2	35325	4.97%	24769	0.28%	Images
3	19938	2.80%	119133	1.33%	http://www.ris.ripe.net/cgi-bin/lg/
4	16651	2.34%	131996	1.47%	/cgi-bin/asinuse.cgi
5	6339	0.89%	226783	2.53%	/cgi-bin/instatus.cgi
6	4845	0.68%	24594	0.27%	/css/ripe-ncc.css
7	4787	0.67%	25153	0.28%	/css/ncc-ns4.css
8	4383	0.62%	317	0.00%	/css/print.css
9	4187	0.59%	2933970	32.78%	/cgi-bin/risprefix.cgi
10	2244	0.32%	20258	0.23%	/cgi-bin/riswhois.cgi

* Most Popular URLs By Kbytes for <http://data.ris.ripe.net/>:

#	Hits		Kbytes		URL
1	9134	0.78%	4716268	4.66%	/rrc07/2004.10/
2	6641	0.57%	4115663	4.07%	/rrc03/2004.10/
3	5081	0.43%	3263010	3.22%	/rrc01/2004.10/
4	5055	0.43%	3249298	3.21%	/rrc06/2004.10/
5	5049	0.43%	3247071	3.21%	/rrc04/2004.10/
6	5049	0.43%	3242313	3.20%	/rrc10/2004.10/
7	5059	0.43%	3234898	3.20%	/rrc05/2004.10/
8	5249	0.45%	3232077	3.19%	/rrc00/2004.10/
9	5062	0.43%	3217870	3.18%	/rrc02/2004.10/
10	4967	0.42%	3192253	3.15%	/rrc11/2004.10/

Comments:

The list over URLs for <http://www.ris.ripe.net/> gives us a good indication of which queries are used by site visitors. The Looking Glass was our most popular query type followed by ASinuse.

* Top 15 External Sites Visiting <http://www.ris.ripe.net/>:

#	Hits		Files		Kbytes		Visits		Hostname
1	36603	5.15%	36601	5.65%	298841	3.34%	3	0.01%	nocserv04.foreshore.net
2	26584	3.74%	25946	4.01%	128819	1.44%	56	0.20%	xxx.dclient.hispeed.ch
3	22066	3.10%	22066	3.41%	124978	1.40%	1	0.00%	statistics.jtibs.net
4	20667	2.91%	20323	3.14%	806277	9.01%	61	0.22%	66.249.65.236(google.com)
5	19930	2.80%	19930	3.08%	68208	0.76%	52	0.19%	xxx.adsl.ttnet.net.tr
6	16344	2.30%	16344	2.52%	122876	1.37%	1	0.00%	m09.itconsult.net
7	16166	2.27%	16151	2.50%	91593	1.02%	68	0.25%	195.175.37.70(telekom.gov.tr)
8	14382	2.02%	14347	2.22%	74841	0.84%	75	0.27%	195.175.37.71(telekom.gov.tr)
9	11888	1.67%	11888	1.84%	134225	1.50%	1	0.00%	tksv61.sakura.ad.jp
10	9820	1.38%	9748	1.51%	52897	0.59%	76	0.28%	195.175.37.10(telekom.gov.tr)
11	9751	1.37%	9751	1.51%	32774	0.37%	7	0.03%	195.64.212.130(ural.ru)
12	9029	1.27%	8164	1.26%	41747	0.47%	54	0.20%	xxx.cable.quicknet.nl
13	8475	1.19%	8434	1.30%	100557	1.12%	25	0.09%	egspd427.teoma.com
14	7890	1.11%	6415	0.99%	56785	0.63%	13	0.05%	xxx.adsl.ttnet.net.tr
15	7116	1.00%	5953	0.92%	42948	0.48%	239	0.87%	sat.adamant.net

* Top 15 External Sites Visiting <http://data.ris.ripe.net/> by Kbytes:

#	Hits		Files		Kbytes		Visits		Hostname
1	206066	17.58%	200579	17.30%	46341565	45.78%	126	9.91%	tocai.dia.uniroma3.it
2	897468	76.58%	896327	77.29%	35656089	35.22%	73	5.74%	titan.cs.ucla.edu
3	30704	2.62%	30698	2.65%	2894294	2.86%	5	0.39%	156.80.189.41(bah.com)
4	948	0.08%	783	0.07%	2346500	2.32%	5	0.39%	xxx.francetelecom.com
5	8906	0.76%	8906	0.77%	2286389	2.26%	0	0.00%	oma.minbzk.nl
6	251	0.02%	232	0.02%	555167	0.55%	6	0.47%	217.107.221.75(rtcomm.ru)
7	93	0.01%	93	0.01%	473007	0.47%	31	2.44%	nubian.blitzed.org
8	32	0.00%	29	0.00%	424226	0.42%	0	0.00%	radb3.merit.edu
9	108	0.01%	86	0.01%	336233	0.33%	2	0.16%	tiger.cs.uoregon.edu
10	19	0.00%	19	0.00%	194935	0.19%	0	0.00%	ubi7.imc.pi.cnr.it
11	18	0.00%	11	0.00%	119672	0.12%	1	0.08%	xxx.hotwireindia.net
12	554	0.05%	525	0.05%	91033	0.09%	10	0.79%	213-156-52-119.fastres.net
13	60	0.01%	49	0.00%	88081	0.09%	2	0.16%	ashgrove.eecs.umich.edu
14	5	0.00%	5	0.00%	86957	0.09%	0	0.00%	213.x(telefonica-data.com)
15	96	0.01%	49	0.00%	83394	0.08%	1	0.08%	xxx.dsl.speakeasy.net

* Countries by Amount of Hits for RIS Web Sites (excluding network *.ripe.net):

#	Hits	Country	Previous Month
1	922570	US Educational	Italy
2	210721	Italy	Unresolved/Unknown
3	175042	Unresolved/Unknown	US Commercial
4	141971	Turkey	US Educational
5	100531	US Commercial	Germany
6	31583	Germany	Turkey
7	29741	Netherlands	Netherlands
8	27986	Switzerland	South Africa
9	13830	Japan	Japan
10	5554	Austria	Israel

(aggregate hits for <http://www.ris.ripe.net/> & <http://data.ris.ripe.net/>)

Comments:

University Rome Tre and the University of California were our most prolific downloaders of RIS data, while US Educational took over the place as our top 'Country of Origin' listing.

Note that most of the unresolved 'hits' were caused by nodes in the .com gTLD.

CGI Statistics:

* Usage of ASinuse utility:

AS number	Hits	
5561	124	Elender Business Communications Ltd, Hungary
3333	73	RIPE NCC
33983	55	ARTMOTION n.p.sh, Prishtina, Kosova.
16256	43	ReCom network, USA
12821	37	INFOSYS-NHK, Russia

* Usage of AS Query:

AS number	Hits	
3333	24	RIPE NCC
31345	20	MAGISTRAL, Belo-Russia
30890	11	Evolva Network, Romania
6074	10	Long Island University, USA
9498	9	Bharti BT Internet Ltd. India

* Usage of Prefix Query (excl. RIS Routing Beacons):

Prefix	Hits	
83.166.64.0/19	126	MX Telecom Limited, UK
202.156.1.0/16	42	StarHUB internet, Singapore
169.203.0.0/20	42	U.S. Bureau of Indian Affairs, USA
193.0.0.0/21	34	RIPE NCC
192.35.244.0/24	21	Technische Universitat Wien, Austria

See URL for CGI statistics: <http://www.ris.ripe.net/ris/stat/DB/>

Comments:

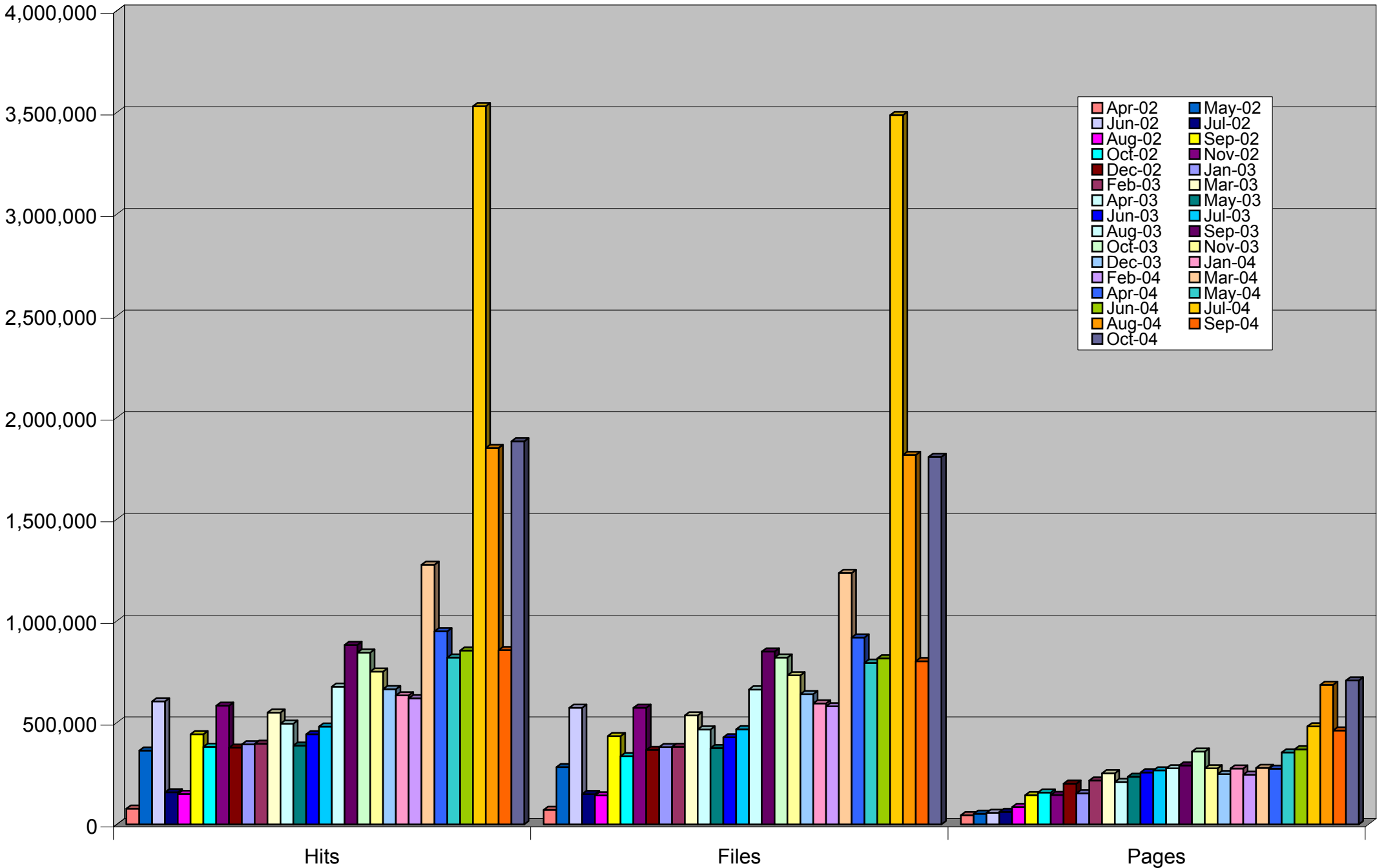
The monthly report always includes an overview of the AS numbers and prefixes used in RIS queries. This overview can roughly identify RIS query users and also help us understand how the utilities are used in the real world. AS3333 and CIDR prefix 193.0.0.0/21 are defaults in the AS Query and Prefix Query respectively, which may inflate their hit count.

Questions about "hits", "files", "sites" etc?

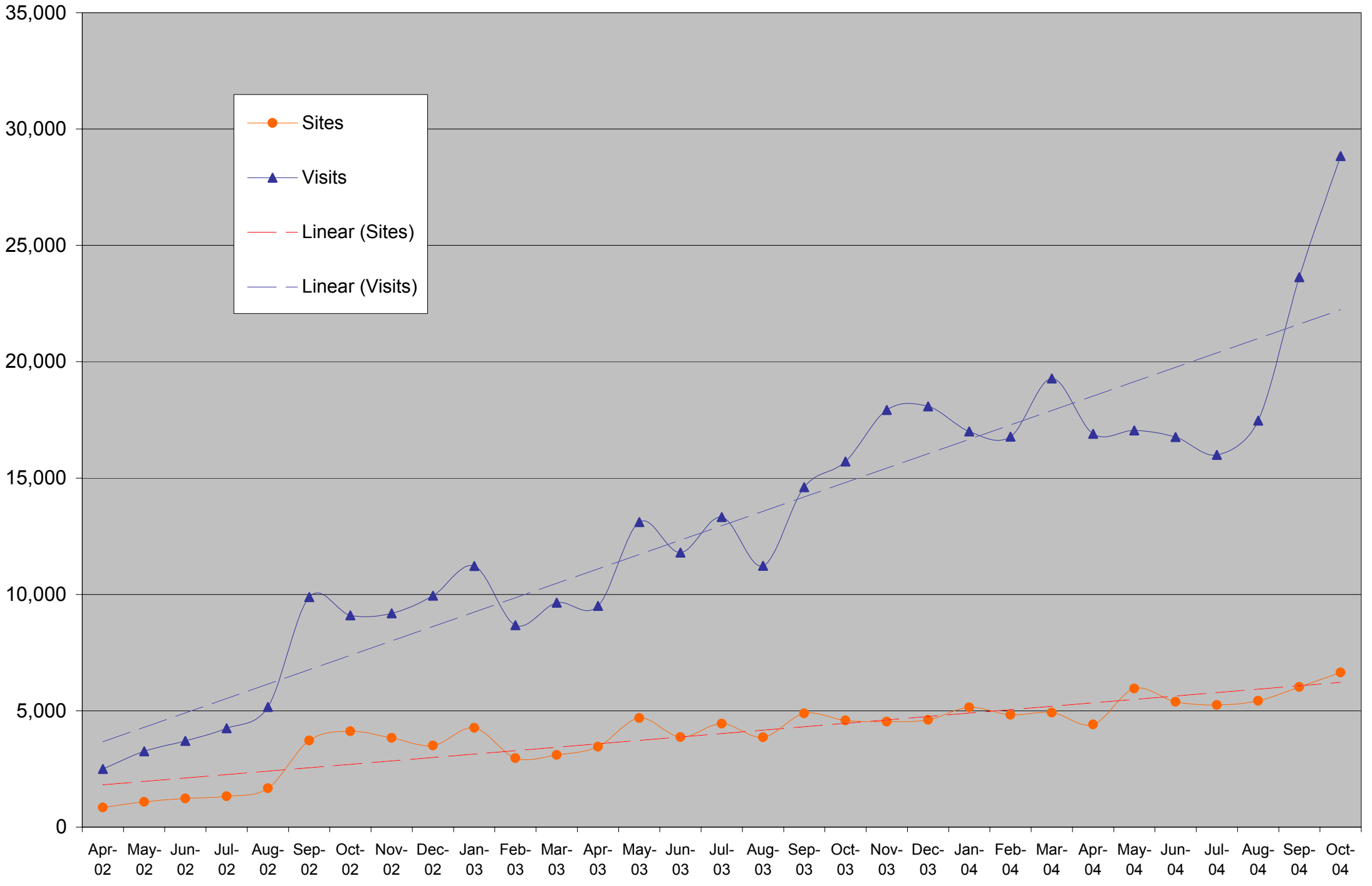
Please see URL: http://www.webalizer.com/webalizer_help.html

> Matthew Williams (MW243-RIPE)
> Customer Liaison Engineer
> RIPE NCC (<http://www.ripe.net/np/>)np/

Hits, Files and Pages per Month for RIS Web Sites



Sites and Visits per Month for RIS Web Sites (aggregate values)



Kbytes per Day for RIS Raw Data Site

