

Matthew Williams

Subject: Web Access Report for the Routing Information Service - September, 2004

Web Access Report for the Routing Information Service - September, 2004

* Monthly Totals for September, 2004 (month-on-month changes within brackets):

Hits	Files	Pages	Visits	Sites	KBytes
856248 (-54%)	802238 (-56%)	460894 (-33%)	23634 (+35%)	6024 (+11%)	96214476 (-11%)

Comments:

The RIS sites have experienced a total of 856248 hits during 23634 visits in September, down 54% and up 35% respectively since the last report. Both July and August appear to have had more hits than the normal trend (see the first diagram). The sites generated around 96 gigabytes of HTTP traffic, which is approximately 8 gigabytes less than in August.

Please observe that the values above also include internal use.

* Daily Values for <http://www.ris.ripe.net/>:

	Avg	Max
Hits per Hour	509	2851
Hits per Day	12223	16778
Files per Day	10944	14378
Pages per Day	11331	15841
Visits per Day	732	1408
KBytes per Day	204363	326334

* Daily Values for <http://data.ris.ripe.net/>:

	Avg	Max
Hits per Hour	679	14028
Hits per Day	16317	40900
Files per Day	15797	40564
Pages per Day	4031	6800
Visits per Day	55	79
KBytes per Day	3002787	7633569

Comments:

The RIS portal, <http://www.ris.ripe.net/>, had around 13 times more visits per day than <http://data.ris.ripe.net/>, our download site. The normal trend is a factor between seven and eight. Around 3 gigabytes of RIS raw data were downloaded throughout an average day in September, slightly down from the 3.2 GB recorded in August.

The maximum value indicates that the daily traffic can vary to a high degree over the entire month.

* Most Popular URLs for <http://www.ris.ripe.net/>:

#	Hits		Kbytes		URL
1	223109	60.84%	1466345	23.92%	/cgi-bin/lg/
2	16025	4.37%	102598	1.67%	/cgi-bin/asinuse.cgi
3	7460	2.03%	274480	4.48%	/cgi-bin/instatus.cgi
4	5035	1.37%	61137	1.00%	/cgi-bin/riswhois.cgi
5	3657	1.00%	2990039	48.77%	/cgi-bin/risprefix.cgi
6	2335	0.64%	124	0.00%	/bgplay/applet.html
7	2091	0.57%	18531	0.30%	/bgplay/bgplay.shtml
8	1820	0.50%	298	0.00%	/bgplay/
9	1717	0.47%	3526	0.06%	/bgplay/bgplay.cfg
10	1270	0.35%	54582	0.89%	/bgplay/bgplay-client.jar

* Most Popular URLs By Kbytes for <http://data.ris.ripe.net/>:

#	Hits		Kbytes		URL
1	10191	2.08%	4868369	5.40%	/rrc07/2004.09/
2	7447	1.52%	4219986	4.68%	/rrc00/2004.09/
3	6363	1.30%	3411404	3.79%	/rrc01/2004.09/
4	6210	1.27%	3376431	3.75%	/rrc05/2004.09/
5	6233	1.27%	3364578	3.73%	/rrc03/2004.09/
6	6178	1.26%	3350084	3.72%	/rrc10/2004.09/
7	6186	1.26%	3349935	3.72%	/rrc04/2004.09/
8	6242	1.28%	3347486	3.72%	/rrc02/2004.09/
9	6173	1.26%	3330995	3.70%	/rrc06/2004.09/
10	6087	1.24%	3296463	3.66%	/rrc11/2004.09/

Comments:

The list over URLs for <http://www.ris.ripe.net/> gives us a good indication of which queries are used by site visitors. The Looking Glass was our most popular query type followed by ASinuse. Noted over the past few months, BGPlay is steadily becoming more popular among RIS users, while RISwhois has clearly established itself among the top five.

* Top 15 External Sites Visiting <http://www.ris.ripe.net/>:

#	Hits		Files		Kbytes		Visits		Hostname
1	26177	7.14%	26177	7.97%	180878	2.95%	2	0.01%	nocserv04.foreshore.net
2	25915	7.07%	25915	7.89%	129915	2.12%	1	0.00%	statistics.jtibs.net
3	21552	5.88%	21552	6.56%	98035	1.60%	9	0.04%	156.80.189.42(bah.com)
4	15809	4.31%	15809	4.82%	95189	1.55%	1	0.00%	m09.itconsult.net
5	11520	3.14%	11520	3.51%	114816	1.87%	1	0.00%	tksv61.sakura.ad.jp
6	9542	2.60%	9314	2.84%	155385	2.53%	144	0.66%	207.46.98.87(microsoft.com)
7	7248	1.98%	7248	2.21%	23695	0.39%	12	0.05%	xxx.gha.mi.chartermi.net
8	5011	1.37%	4848	1.48%	53739	0.88%	89	0.41%	65.54.188.117(microsoft.com)
9	4373	1.19%	4373	1.33%	15298	0.25%	20	0.09%	qn-82-217-211-51.quicknet.nl
10	3576	0.98%	3576	1.09%	11726	0.19%	7	0.03%	82-217-211-51.cable.quicknet.nl
11	3413	0.93%	3413	1.04%	12586	0.21%	19	0.09%	qn-82-217-211-221.quicknet.nl
12	3413	0.93%	3382	1.03%	20414	0.33%	208	0.95%	sat.adamant.net
13	3168	0.86%	2425	0.74%	57517	0.94%	3	0.01%	66.249.66.1(google.com)
14	3139	0.86%	3139	0.96%	10251	0.17%	6	0.03%	212.175.61.46(turnet.net.tr)
15	2512	0.69%	2512	0.77%	8015	0.13%	1	0.00%	xxx.mnet-online.de

* Top 15 External Sites Visiting <http://data.ris.ripe.net/> by Kbytes:

#	Hits		Files		Kbytes		Visits		Hostname
1	250925	51.26%	242837	51.24%	57847062	64.21%	84	5.05%	tocai.dia.uniroma3.it
2	47484	9.70%	47482	10.02%	8844671	9.82%	18	1.08%	xxx.tu-muenchen.de
3	1896	0.39%	1527	0.32%	2875792	3.19%	15	0.90%	xxx.francetelecom.com
4	8620	1.76%	8620	1.82%	2212966	2.46%	0	0.00%	oma.minbzk.nl
5	13909	2.84%	13906	2.93%	2106523	2.34%	2	0.12%	marais.pg.ee.wits.ac.za
6	54985	11.23%	54949	11.59%	2082501	2.31%	504	30.29%	156.80.189.41(bah.com)
7	43839	8.96%	43832	9.25%	1681660	1.87%	5	0.30%	lakers.cs.ucla.edu
8	16297	3.33%	16297	3.44%	796129	0.88%	20	1.20%	xxx.labs.agilent.com
9	1923	0.39%	1923	0.41%	755518	0.84%	2	0.12%	sow.isi.edu
10	90	0.02%	90	0.02%	459397	0.51%	30	1.80%	nubian.blitzed.org
11	59	0.01%	59	0.01%	444792	0.49%	30	1.80%	lime.ripe.net
12	32	0.01%	29	0.01%	414369	0.46%	0	0.00%	radb3.merit.edu
13	14295	2.92%	14241	3.01%	283295	0.31%	6	0.36%	xxx.research.att.com
14	8929	1.82%	8927	1.88%	282060	0.31%	1	0.06%	kings.cs.ucla.edu
15	116	0.02%	112	0.02%	264664	0.29%	3	0.18%	217.107.221.75(rtcomm.ru)

* Countries by Amount of Hits for RIS Web Sites (excluding network *.ripe.net):

#	Hits	Country	Previous Month
1	254068	Italy	Unresolved/Unknown
2	142170	Unresolved/Unknown	Italy
3	95107	US Commercial	US Commercial
4	61919	US Educational	Germany
5	54585	Germany	Non-Profit Organization
6	31586	Turkey	Turkey
7	23794	Netherlands	Netherlands
8	13909	South Africa	US Educational

9	12458	Japan	Japan
10	2638	Israel	Ukraine

(aggregate hits for <http://www.ris.ripe.net/> & <http://data.ris.ripe.net/>)

Comments:

It appears that folk at both Google and Microsoft have discovered our web-driven services. University Rome Tre and the Technical University of Munich were our most prolific downloaders of RIS data, while Italy took over the place as our top 'Country of Origin' listing.

Note that most of the unresolved 'hits' were caused by nodes in the .com gTLD.

CGI Statistics:

* Usage of ASinuse utility:

AS number	Hits	
5561	116	Elender Business Communications Ltd, Hungary
3333	33	RIPE NCC
33856	30	NATO/KFOR Contractor
15645	26	Ukrainian Internet Exchange
8505	22	TR.NET, Turkey

* Usage of AS Query:

AS number	Hits	
3333	32	RIPE NCC
3320	10	Deutsche Telekom AG
15982	9	Verat D.O.O, Yugoslavia
2828	7	XO Communications, USA
25067	7	MAGISTRALBY Internet Tech & Systems, Belo-Russia

* Usage of Prefix Query (excl. RIS Routing Beacons):

Prefix	Hits	
217.25.144.0/20	54	Telecall, JSC, Russia
82.198.160.0/19	37	CJSC GLOBUS-TELECOM, Russia
193.0.0.0/21	24	RIPE NCC
192.83.230.0/24	21	PSG's Steerable Beacon Experiment, USA
80.67.208.0/20	18	Norilsk-Telecom Ltd, Russia

See URL for CGI statistics: <http://www.ris.ripe.net/ris/stat/DB/>

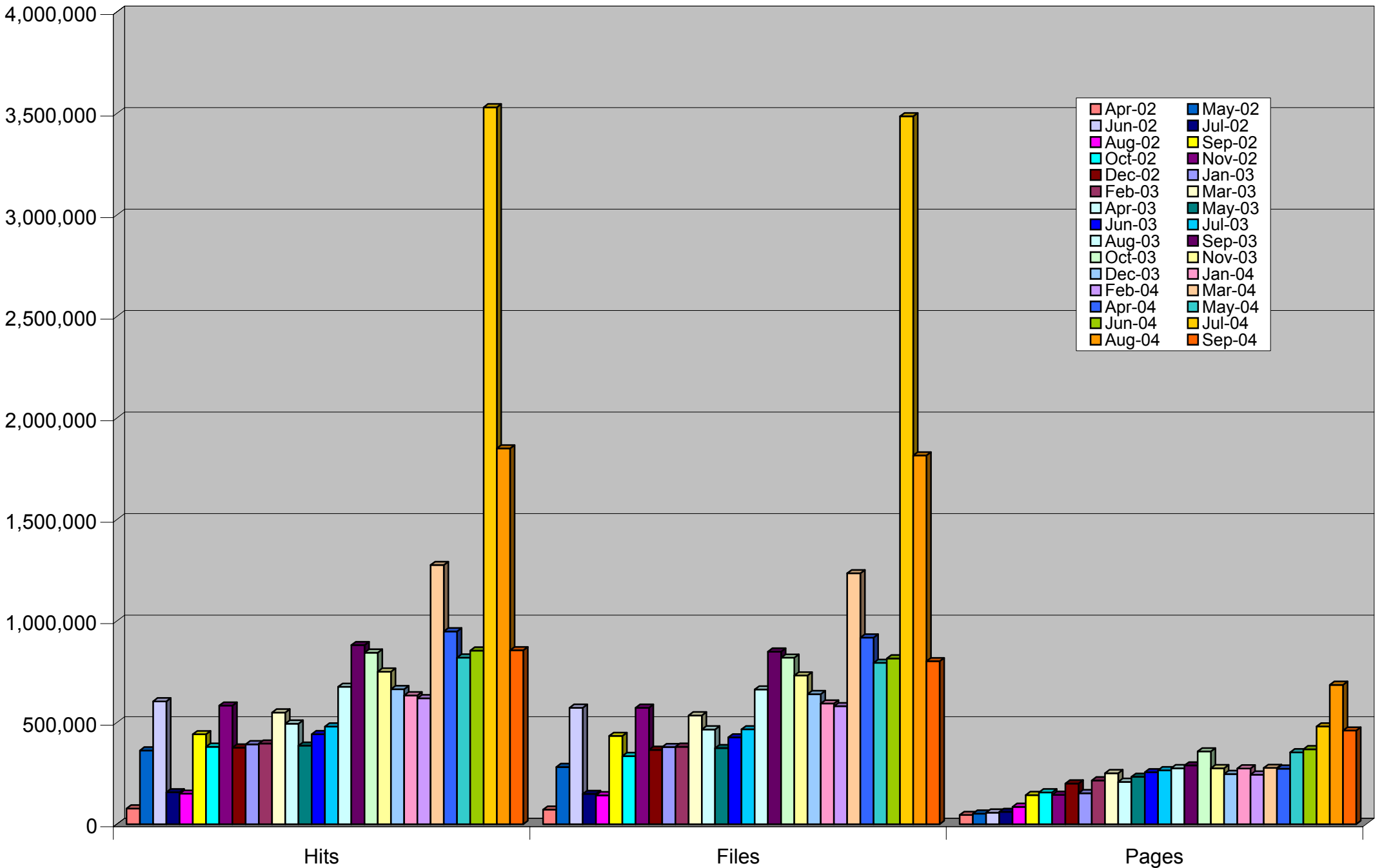
Comments:

The monthly report always includes an overview of the AS numbers and prefixes used in RIS queries. This overview can roughly identify RIS query users and also help us understand how the utilities are used in the real world. AS3333 and CIDR prefix 193.0.0.0/21 are defaults in the AS Query and Prefix Query respectively, which may inflate their hit count.

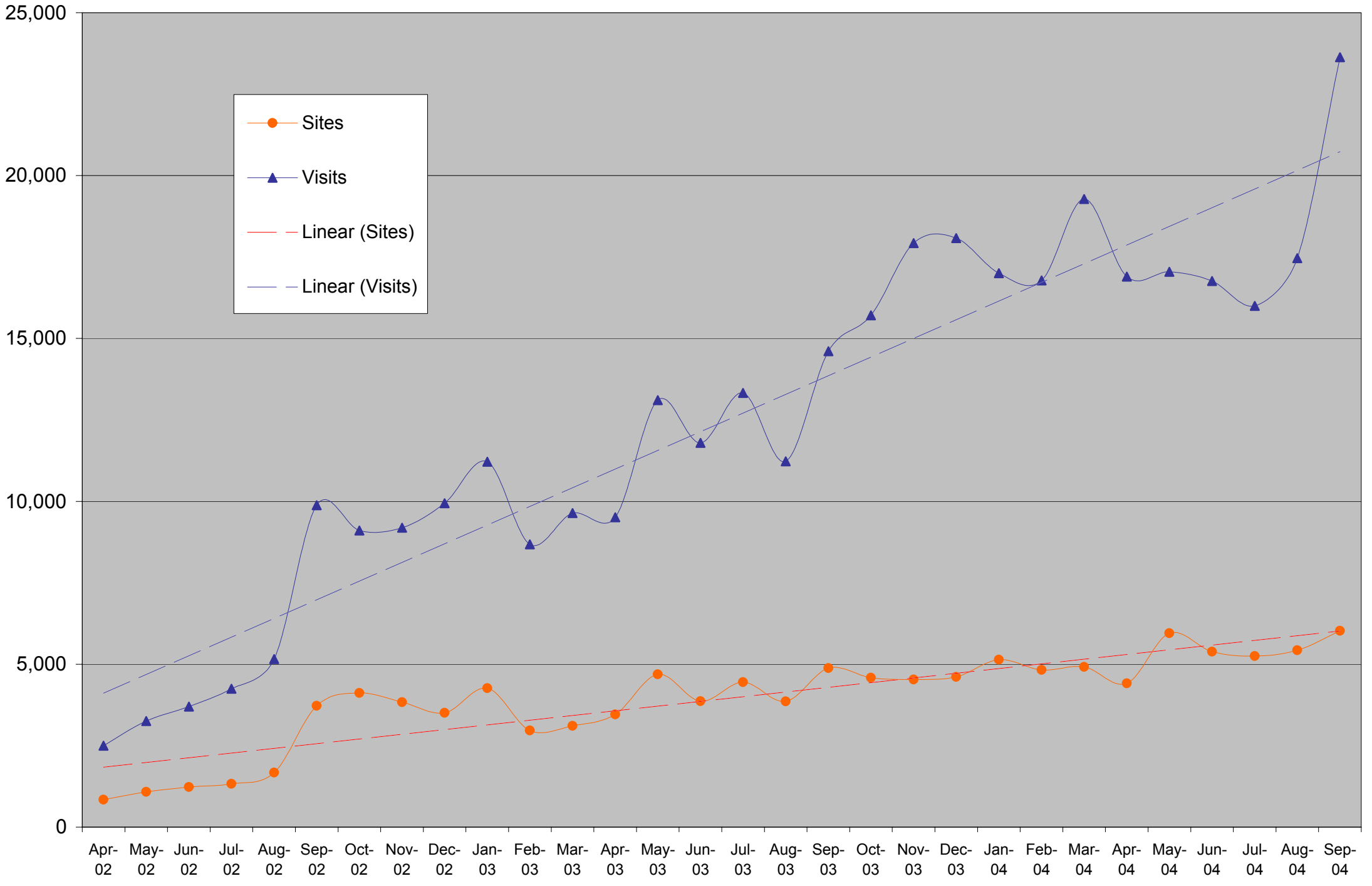
Questions about "hits", "files", "sites" etc?
Please see URL: http://www.webalizer.com/webalizer_help.html

> Matthew Williams (MW243-RIPE)
> Customer Liaison Engineer
> RIPE NCC (<http://www.ripe.net/np/>)np/

Hits, Files and Pages per Month for RIS Web Sites



Sites and Visits per Month for RIS Web Sites (aggregate values)



Kbytes per Day for RIS Raw Data Site

