

# Matthew Williams

---

**Subject:** Web Access Report for the Routing Information Service - July, 2004

Web Access Report for the Routing Information Service - July, 2004  
-----

\* Monthly Totals for July, 2004 (month-on-month changes within brackets):

Hits	Files	Pages	Visits	Sites	KBytes
3530336(+313%)	3486471(+327%)	481228(+30%)	15998(-5%)	5253(-2%)	119228386(+87%)

Comments:  
-----

The RIS sites have had a total of 3530336 hits distributed over 15998 visits, up 313% and down 5% respectively since the last report. Both web sites generated around 119 gigabytes of HTTP traffic, which is approximately 55 gigabytes(!) more than in June. One particular host in Italy was responsible for 40% of the total traffic volume, while another in the USA generated 65% of the hits. Quite an extraordinary coincidence!

Please observe that the values above also include internal use.

\* Daily Values for <http://www.ris.ripe.net/>:

	Avg	Max
Hits per Hour	549	10867
Hits per Day	13185	24793
Files per Day	12447	23919
Pages per Day	12450	23741
Visits per Day	483	733
KBytes per Day	176730	275826

\* Daily Values for <http://data.ris.ripe.net/>:

	Avg	Max
Hits per Hour	4195	31550
Hits per Day	100695	303945
Files per Day	100018	303337
Pages per Day	3072	6653
Visits per Day	32	51
KBytes per Day	3669347	11256268

Comments:  
-----

The RIS portal, <http://www.ris.ripe.net/>, had around 15 times more visits per day than <http://data.ris.ripe.net/>, our download site. The normal trend is a factor between seven and eight. In this case, a sudden drop in visits to the RIS raw data site can explain the aberration. Around 3.7 gigabytes of RIS raw data were downloaded throughout an average day in July, significantly up from the 2 GB recorded in June.

The maximum value indicates that the daily traffic can vary to a high degree over the entire month.

\* Most Popular URLs for <http://www.ris.ripe.net/>:

#	Hits		Kbytes		URL
1	296427	72.52%	1667117	30.43%	/cgi-bin/lg/
2	15351	3.76%	98719	1.80%	/cgi-bin/asinuse.cgi
3	5440	1.33%	2527702	46.14%	/cgi-bin/risprefix.cgi
4	1981	0.48%	112	0.00%	/bgplay/applet.html
5	1798	0.44%	15940	0.29%	/bgplay/bgplay.shtml
6	1719	0.42%	66734	1.22%	/cgi-bin/instatus.cgi
7	1594	0.39%	274	0.00%	/bgplay/
8	1443	0.35%	11153	0.20%	/myasn/ripe-lir.css
9	1233	0.30%	2560	0.05%	/bgplay/bgplay.cfg
10	1054	0.26%	53277	0.97%	/bgplay/bgplay-client.jar

\* Most Popular URLs By Kbytes for http://data.ris.ripe.net/:

#	Hits	Kbytes	URL
1	9970 0.32%	5542150 4.87%	/rrc07/2004.07/
2	9905 0.32%	5489627 4.83%	/rrc08/2004.07/
3	6553 0.21%	4459453 3.92%	/rrc00/2004.07/
4	5495 0.18%	4008928 3.52%	/rrc10/2004.07/
5	5540 0.18%	3997756 3.51%	/rrc06/2004.07/
6	5540 0.18%	3997543 3.51%	/rrc05/2004.07/
7	5534 0.18%	3980283 3.50%	/rrc04/2004.07/
8	5656 0.18%	3927941 3.45%	/rrc01/2004.07/
9	5627 0.18%	3916460 3.44%	/rrc03/2004.07/
10	5566 0.18%	3850180 3.38%	/rrc02/2004.07/

Comments:

-----  
 The list over URLs for http://www.ris.ripe.net/ gives us a good indication of which queries are used by site visitors. As usual, the Looking Glass was our most popular query type followed by ASinuse. Noted as a trend over the past few months, BGPlay is steadily becoming more popular among RIS users.

\* Top 15 External Sites Visiting http://www.ris.ripe.net/:

#	Hits	Files	Kbytes	Visits	Hostname
1	36836 9.01%	36836 9.55%	213464 3.90%	1 0.01%	baileys.gnsnet.net
2	31758 7.77%	31758 8.23%	159238 2.91%	5 0.03%	statistics.jtibs.net
3	24174 5.91%	24174 6.26%	150683 2.75%	1 0.01%	nocserv04.foreshore.net
4	16301 3.99%	16301 4.22%	97889 1.79%	2 0.01%	m09.itconsult.net
5	12713 3.11%	12713 3.29%	44157 0.81%	1 0.01%	xxx.dals.blueyonder.co.uk
6	11900 2.91%	11900 3.08%	107487 1.96%	1 0.01%	tksv61.sakura.ad.jp
7	8368 2.05%	8368 2.17%	29245 0.53%	48 0.32%	xxx.quicknet.nl
8	7940 1.94%	7912 2.05%	80746 1.47%	20 0.13%	egspd427.teoma.com
9	6596 1.61%	6596 1.71%	20519 0.37%	2 0.01%	xxx.t-ipconnect.de
10	6456 1.58%	6456 1.67%	29972 0.55%	26 0.17%	planet.u-strasbg.fr
11	5322 1.30%	5322 1.38%	17768 0.32%	1 0.01%	xxx.t-ipconnect.de
12	5236 1.28%	5165 1.34%	29988 0.55%	102 0.68%	nat.adamant.ua
13	4913 1.20%	4913 1.27%	16587 0.30%	4 0.03%	xxx.t-ipconnect.de
14	4812 1.18%	4812 1.25%	15414 0.28%	2 0.01%	xxx.t-ipconnect.de
15	4764 1.17%	4764 1.23%	15625 0.29%	1 0.01%	xxx.t-ipconnect.de

\* Top 15 External Sites Visiting http://data.ris.ripe.net/ by Kbytes:

#	Hits	Files	Kbytes	Visits	Hostname
1	325075 10.41%	311481 10.05%	51152703 44.97%	123 12.12%	tocai.dia.uniroma3.it
2	2391498 76.61%	2391039 77.12%	20131610 17.70%	9 0.89%	156.80.189.41 (bah.com)
3	8934 0.29%	8934 0.29%	8991457 7.90%	270 26.60%	xxx.francetelecom.com
4	70881 2.27%	70495 2.27%	7095279 6.24%	5 0.49%	warriors.cs.ucla.edu
5	20098 0.64%	20083 0.65%	3392743 2.98%	44 4.33%	xxx.tu-muenchen.de
6	12216 0.39%	12214 0.39%	3058024 2.69%	12 1.18%	griffin.cs.ucdavis.edu
7	71034 2.28%	71033 2.29%	2726996 2.40%	10 0.99%	ajanta.cs.berkeley.edu
8	153348 4.91%	153087 4.94%	2352383 2.07%	29 2.86%	xxx.research.att.com
9	8912 0.29%	8912 0.29%	2287930 2.01%	0 0.00%	217.169.232.18 (mindef.nl)
10	26936 0.86%	26879 0.87%	1236704 1.09%	41 4.04%	xxx.labs.agilent.com
11	453 0.01%	438 0.01%	963847 0.85%	9 0.89%	217.107.221.75 (rtcomm.ru)
12	93 0.00%	93 0.00%	460792 0.41%	31 3.05%	nubian.blitzed.org
13	31 0.00%	30 0.00%	426109 0.37%	0 0.00%	radb3.merit.edu
14	7718 0.25%	6516 0.21%	396858 0.35%	28 2.76%	bgp.ists.dartmouth.edu
15	4964 0.16%	4964 0.16%	232833 0.20%	1 0.10%	clippers.cs.ucla.edu

\* Countries by Amount of Hits for RIS Web Sites (excluding network \*.ripe.net):

#	Hits	Country	Previous Month
1	2420773	Unresolved/Unknown	US Commercial
2	328230	Italy	US Educational
3	255967	US Commercial	Germany
4	167907	US Educational	Italy
5	125497	Germany	US Educational
6	16691	Netherlands	Ukraine
7	13794	United Kingdom	Japan

8	12878	Japan	Netherlands
9	6695	France	Denmark
10	6391	Ukraine	United Kingdom

(aggregate hits for <http://www.ris.ripe.net/> & <http://data.ris.ripe.net/>)

Comments:

-----  
 The 'University Rome Tre' and 'Booz Allen Hamilton Inc.' were our most prolific downloaders of RIS data, while 'Unresolved/Unknown' took the place as our top 'Country of Origin' listing. However, please keep in mind that most of the unresolved 'hits' were caused by a node in the .com TLD.

CGI Statistics:

\* Usage of ASinuse utility:

AS number	Hits	
5561	124	Elender Business Communications Ltd, Hungary
3333	59	RIPE NCC
16265	28	LEASEWEB AS, Netherlands
31512	15	JSC Logica, Russia
8369	15	INTERSVYAZ Autonomous System, Russia

\* Usage of AS Query:

AS number	Hits	
3333	45	RIPE NCC
15372	34	IBH Prof. Dr. Horn GmbH, Germany
11127	10	Netsat Express Inc, USA
12654	7	RIPE NCC RIS Project, USA
16186	6	SSC Networks, Norway

\* Usage of Prefix Query (excl. RIS Routing Beacons):

Prefix	Hits	
69.72.128.0/17	52	Pegasus Web Technologies, USA
193.0.0.0/21	45	RIPE NCC
192.168.1.0/24	43	RFC1918
201.131.8.0/24	42	Industrias Xignux S.A. de C.V, Mexico
213.144.0.0/19	42	TelemaxX Telekommunikation GmbH, Germany

See URL for CGI statistics: <http://www.ris.ripe.net/ris/stat/DB/>

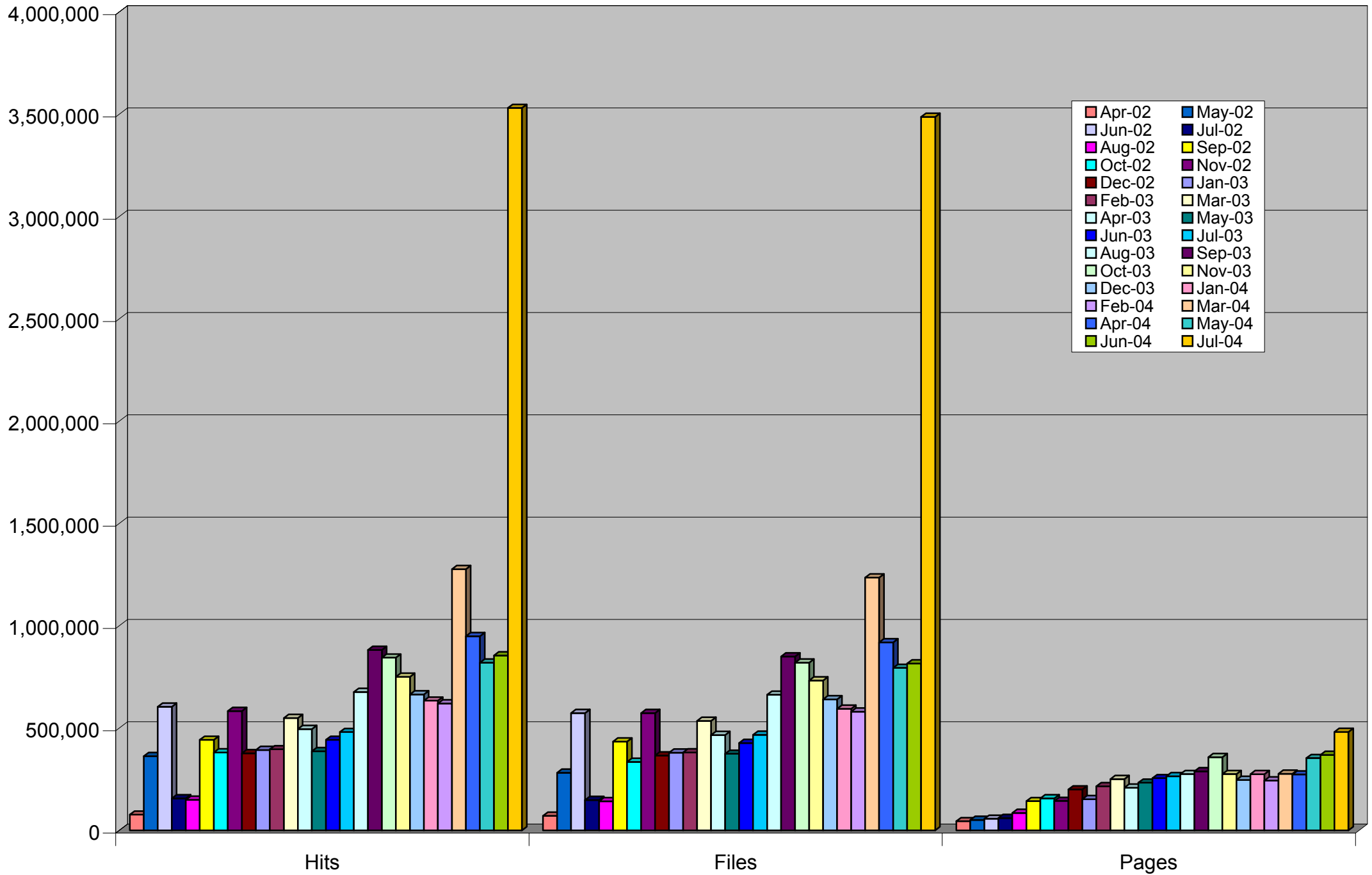
Comments:

-----  
 The monthly report always includes an overview of the AS numbers and prefixes used in RIS queries. This overview can roughly identify RIS query users and also help us understand how the utilities are used in the real world. AS3333 and CIDR prefix 193.0.0.0/21 are defaults in the AS Query and Prefix Query respectively, which may inflate their hit count.

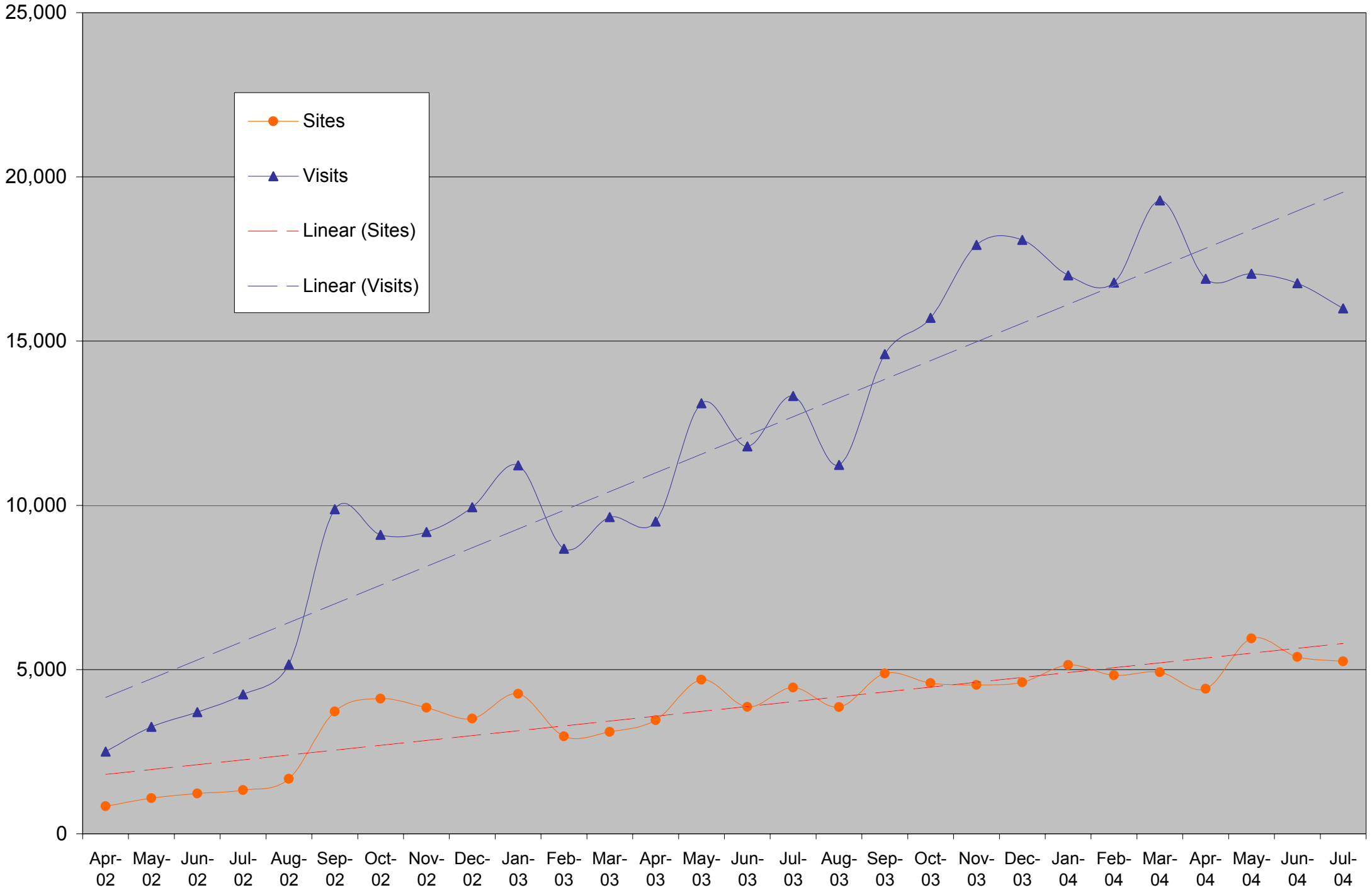
Questions about "hits", "files", "sites" etc?  
 Please see URL: [http://www.webalizer.com/webalizer\\_help.html](http://www.webalizer.com/webalizer_help.html)

---  
 > Matthew Williams (MW243-RIPE)  
 > Customer Liaison Engineer  
 > RIPE NCC (<http://www.ripe.net/np/>)

### Hits, Files and Pages per Month for RIS Web Sites



Sites and Visits per Month for RIS Web Sites (aggregate values)



### Kbytes per Day for RIS Raw Data Site

