

# Matthew Williams

---

**Subject:** Web Access Report for the Routing Information Service - May, 2004

Web Access Report for the Routing Information Service - May, 2004  
-----

\* Monthly Totals for May, 2004 (month-on-month changes within brackets):

Hits	Files	Pages	Visits	Sites	KBytes
819996(-14%)	794074(-14%)	353418(+29%)	17048(+1%)	5952(+35%)	70487880(+17%)

Comments:  
-----

The RIS sites have had a total of 819996 hits distributed over 17048 visits, down 14% and more or less stable respectively since the last report. Both web sites generated around 70 gigabytes of HTTP traffic, which is approximately 10 gigabytes more than in April. An increase in 'pages', while observing a lower number of 'hits', usually indicates the RIS portal saw more activity in relative terms to the download site.

Please observe that the values above also include internal use.

\* Daily Values for <http://www.ris.ripe.net/>:

	Avg	Max
Hits per Hour	468	4710
Hits per Day	11250	20400
Files per Day	10614	18195
Pages per Day	10353	18134
Visits per Day	498	1608
KBytes per Day	153374	335311

\* Daily Values for <http://data.ris.ripe.net/>:

	Avg	Max
Hits per Hour	670	20059
Hits per Day	16083	69006
Files per Day	15854	68772
Pages per Day	1427	1608
Visits per Day	69	85
KBytes per Day	2196222	14607670

Comments:  
-----

The RIS portal, <http://www.ris.ripe.net/>, had around seven times more visits per day than <http://data.ris.ripe.net/>, our download site, which is a lower factor than the factor of eight in the previous report. Around 2.2 gigabytes of RIS raw data were downloaded throughout an average day in May, marginally up from 1.9 GB recorded in April.

The maximum value indicates that the daily traffic can vary to a high degree over the entire month.

\* Most Popular URLs for <http://www.ris.ripe.net/>:

#	Hits		Kbytes		URL
1	238181	70.57%	1622080	35.25%	/cgi-bin/lg/
2	15988	4.74%	108798	2.36%	/cgi-bin/asinuse.cgi
3	9822	2.91%	2044401	44.43%	/cgi-bin/risprefix.cgi
4	2984	0.88%	181	0.00%	/bgplay/applet.html
5	2941	0.87%	25757	0.56%	/bgplay/bgplay.shtml

6	2503	0.74%	465	0.01%	/bgplay/
7	2265	0.67%	2380	0.05%	/bgplay/bgplay.cfg
8	1943	0.58%	13577	0.30%	/cgi-bin/riswhois.cgi
9	1779	0.53%	109786	2.39%	/bgplay/bgplay-client.jar
10	1222	0.36%	24777	0.54%	/bgplay/help.shtml

\* Most Popular URLs By Kbytes for http://data.ris.ripe.net/:

#	Hits		Kbytes		URL
1	3993	0.83%	2567168	3.90%	/rrc00/2004.05/
2	5163	1.07%	2381705	3.61%	/rrc08/2004.05/
3	5163	1.07%	2380631	3.61%	/rrc07/2004.05/
4	8564	1.77%	2198590	3.34%	/rrc00/1999.10/updates.19991008.1103.gz
5	951	0.20%	607578	0.92%	/rrc03/2004.05/
6	952	0.20%	587660	0.89%	/rrc01/2004.05/
7	888	0.18%	567137	0.86%	/rrc04/2004.05/
8	887	0.18%	566380	0.86%	/rrc06/2004.05/
9	887	0.18%	566249	0.86%	/rrc05/2004.05/
10	798	0.17%	427752	0.65%	/rrc02/2004.05/

Comments:

-----  
The list over URLs for http://www.ris.ripe.net/ gives us a good indication of which queries are used by site visitors. As usual, the Looking Glass was our most popular query type followed by ASinuse. As noted last month, BGPlay and RISwhois are becoming more popular among RIS users.

\* Top 15 External Sites Visiting http://www.ris.ripe.net/:

#	Hits		Files		Kbytes		Visits		Hostname
1	45842	13.58%	45842	14.40%	337663	7.34%	1	0.01%	nocserv04.foreshore.net
2	42689	12.65%	42689	13.41%	247458	5.38%	2	0.01%	baileys.gnsnet.net
3	30342	8.99%	30342	9.53%	151994	3.30%	1	0.01%	statistics.jtibs.net
4	17164	5.09%	17164	5.39%	97788	2.13%	1	0.01%	gw.mik.net.ua
5	15726	4.66%	15726	4.94%	92741	2.02%	1	0.01%	m09.itconsult.net
6	11371	3.37%	11371	3.57%	86329	1.88%	4	0.03%	tksv61.sakura.ad.jp
7	8160	2.42%	8160	2.56%	25112	0.55%	6	0.04%	qn-82-217-51-152.quicknet.nl
8	4845	1.44%	4845	1.52%	19806	0.43%	2	0.01%	pd9e24b7e.dip.t-dialin.net
9	4743	1.41%	4743	1.49%	229210	4.98%	82	0.55%	tocai.dia.uniroma3.it
10	4702	1.39%	4685	1.47%	31632	0.69%	16	0.11%	egspd427.teoma.com
11	4169	1.24%	4169	1.31%	27190	0.59%	1	0.01%	sitescopeint.foreshore.net
12	3265	0.97%	3265	1.03%	13147	0.29%	13	0.09%	cp11145-a.tilbul.nb.home.nl
13	3105	0.92%	3105	0.98%	13135	0.29%	4	0.03%	pd9e24625.dip.t-dialin.net
14	3056	0.91%	3056	0.96%	13306	0.29%	5	0.03%	pd9e24e7e.dip.t-dialin.net
15	2530	0.75%	2530	0.79%	11390	0.25%	2	0.01%	pd9e247d3.dip.t-dialin.net

\* Top 15 External Sites Visiting http://data.ris.ripe.net/ by Kbytes:

#	Hits		Files		Kbytes		Visits		Hostname
1	35471	7.35%	35463	7.46%	13303353	20.19%	1	0.05%	146.48.78.38(cnr.it)
2	10603	2.20%	10602	2.23%	9107085	13.82%	322	15.41%	xxx.francetelecom.com
3	72895	15.11%	72824	15.31%	8847700	13.43%	39	1.87%	xxx.tu-muenchen.de
4	70480	14.61%	70479	14.82%	8577330	13.02%	1	0.05%	ubi7.imc.pi.cnr.it
5	42891	8.89%	42885	9.02%	3703500	5.62%	5	0.24%	156.80.189.41(bah.com)
6	8563	1.77%	8563	1.80%	2198333	3.34%	0	0.00%	217.169.232.18(mindef.nl)
7	27181	5.63%	27178	5.71%	1578148	2.40%	4	0.19%	xxx.ucdavis.edu
8	69028	14.31%	68785	14.46%	1417483	2.15%	27	1.29%	xxx.research.att.com
9	12893	2.67%	10321	2.17%	1125212	1.71%	76	3.64%	bgp.ists.dartmouth.edu
10	10288	2.13%	9004	1.89%	1110312	1.69%	998	47.75%	ws2.renesys.com
11	1199	0.25%	1199	0.25%	936922	1.42%	36	1.72%	193.49.124.107(cnet.fr)
12	18270	3.79%	18267	3.84%	862340	1.31%	23	1.10%	xxx.labs.agilent.com
13	239	0.05%	217	0.05%	756534	1.15%	5	0.24%	217.107.221.75(rtcomm.ru)
14	22150	4.59%	22149	4.66%	698845	1.06%	1	0.05%	xxx.lucent.com

15 7930 1.64% 7924 1.67% 585896 0.89% 3 0.14% 131.159.14.22(dfn.de)

\* Countries by Amount of Hits for RIS Web Sites (excluding network \*.ripe.net):

#	Hits	Country	Previous Month
1	177433	US Commercial	US Educational
2	124614	Unresolved/Unknown	US Commercial
3	76615	Italy	Germany
4	75009	Germany	Unresolved/Unknown
5	60618	US Educational	Ukraine
6	22599	Netherlands	Japan
7	18733	Ukraine	Old style Arpanet (arpa)
8	12437	Japan	Italy
9	3394	Israel	Israel
10	1691	Russian Federation	Netherlands

(aggregate hits for <http://www.ris.ripe.net/> & <http://data.ris.ripe.net/>)

Comments:

-----  
The 'Italian National Research Council' and 'France Telecom' were our most prolific downloaders of RIS data, while 'US Commercial' became our top 'Country of Origin' listing before a large group of 'Unresolved/Unknown' hosts.

CGI Statistics:

-----  
\* Usage of ASinuse utility:

AS number	Hits	
5561	124	Elender Business Communications Ltd, Hungary
29053	76	JSC Telenet, Russia
31076	59	Teligo Srl, Italy
3333	47	RIPE NCC
31246	39	NETBOX, Czechia

\* Usage of AS Query:

AS number	Hits	
3333	30	RIPE NCC
15553	11	Pitagora S.p.A, Italy
25692	11	AEGIS INFORMATION SYSTEMS INC, USA
9200	9	Essent Kabelcom, Netherlands
31330	9	Digihuis IT services, Netherlands

\* Usage of Prefix Query (excl. RIS Routing Beacons):

Prefix	Hits	
193.204.0.0/15	2104	GARR Italian Research and Academic Network
192.83.230.0/24	495	PSG, USA (Steerable Beacon Experiment)
193.0.0.0/21	186	RIPE NCC
62.208.0.0/16	126	Cable & Wireless Telecommunication Services GmbH
192.172.226.0/24	105	San Diego Supercomputer Center, USA

See URL for CGI statistics: <http://www.ris.ripe.net/ris/stat/DB/>

Comments:

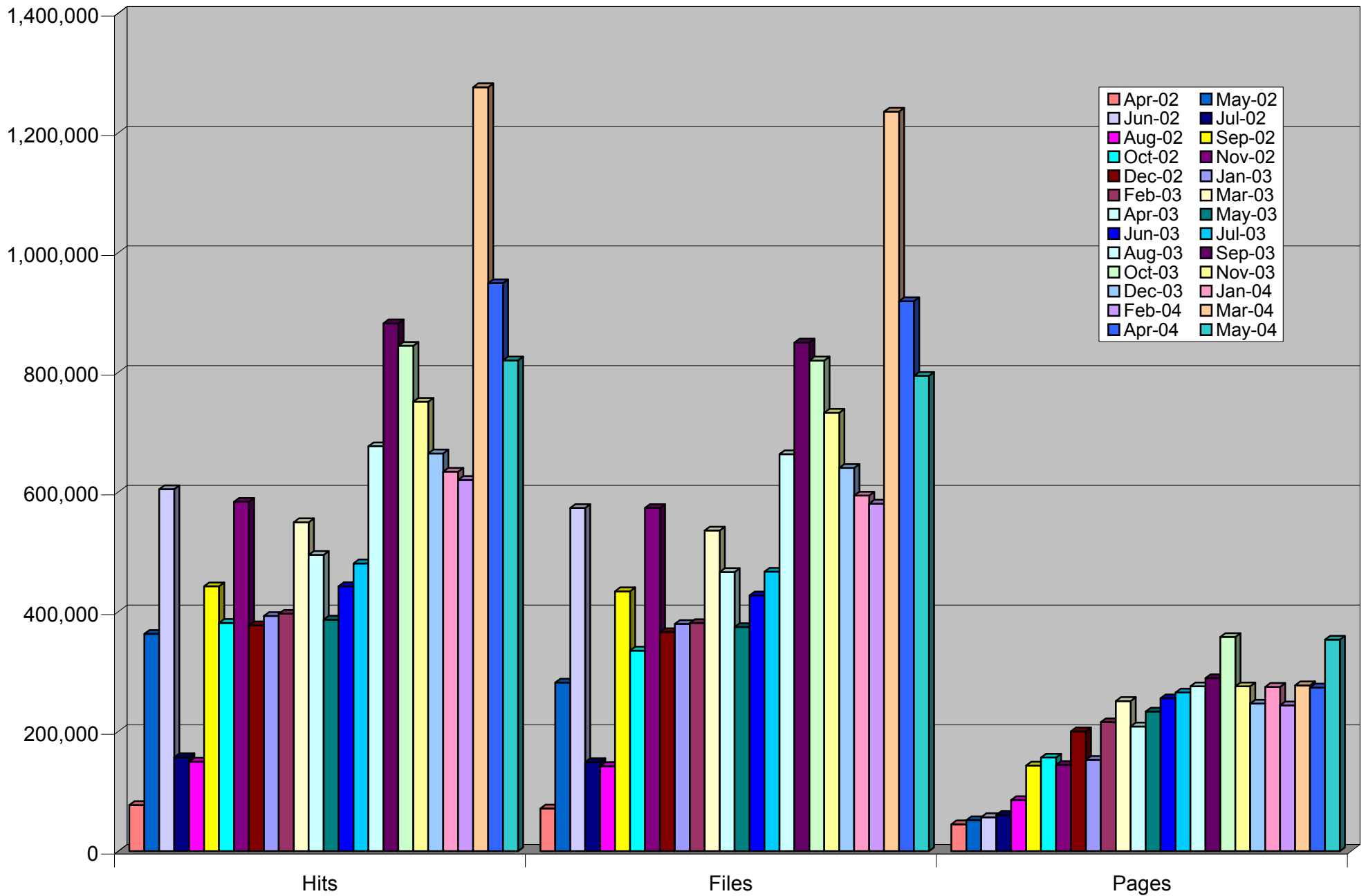
-----  
The monthly report always includes an overview of the AS numbers and prefixes used in RIS queries. This overview can roughly identify RIS query users and also help us understand how the utilities are used in the real world. AS3333 and CIDR prefix 193.0.0.0/21 are defaults in the AS Query and Prefix Query respectively, which may inflate their hit count.

Questions about "hits", "files", "sites" etc?  
Please see URL: [http://www.webalizer.com/webalizer\\_help.html](http://www.webalizer.com/webalizer_help.html)

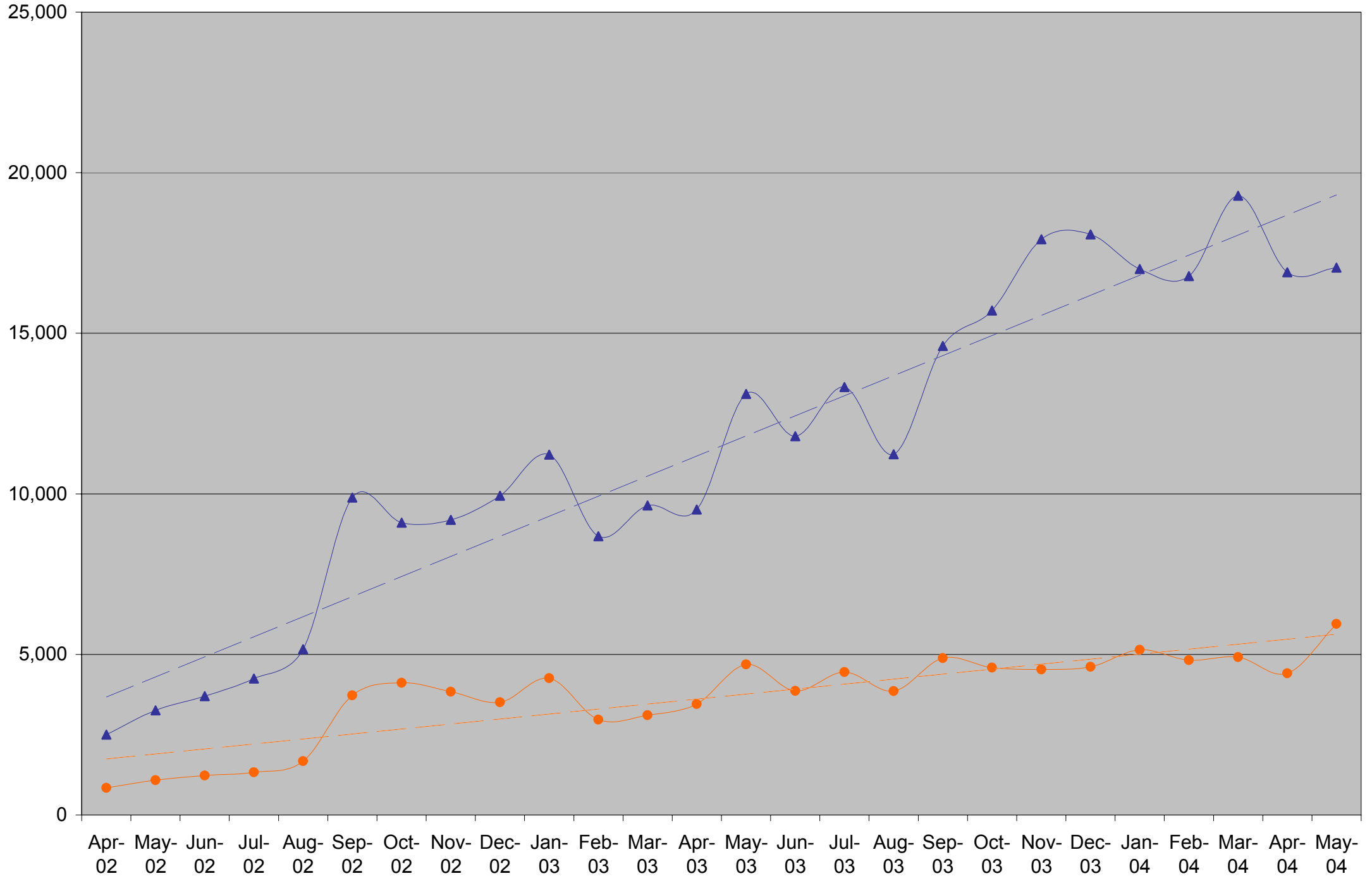
---

> Matthew Williams (MW243-RIPE)  
> Customer Liaison Engineer  
> RIPE NCC (<http://www.ripe.net/np/>)

Hits, Files and Pages per Month for RIS Web Sites



Sites and Visits per Month for RIS Web Sites (aggregate values)



### Kbytes per Day for RIS Raw Data Site

