



# What's Happening in IP Address Policy?

filiz@ripe.net

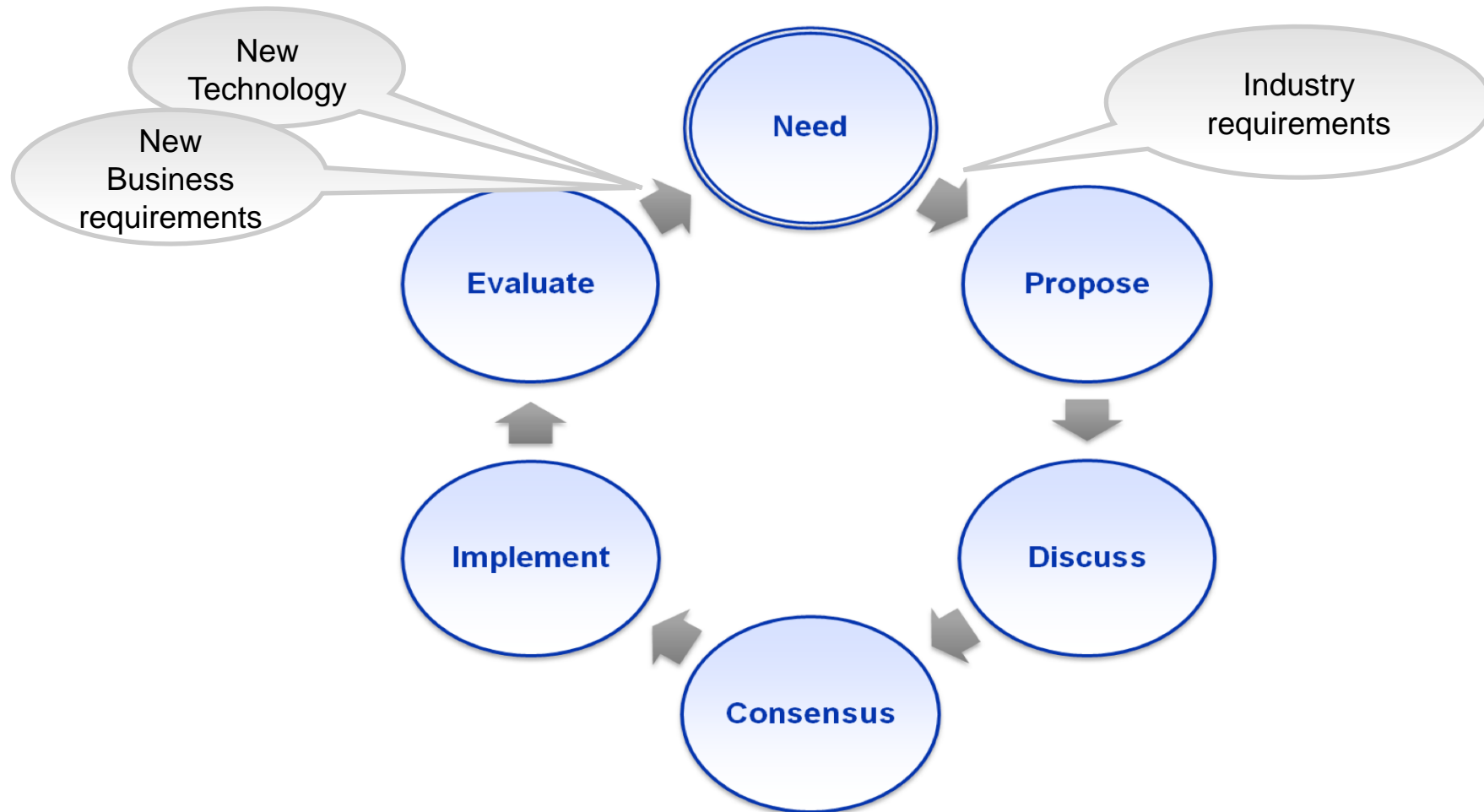


# Overview

- RIPE PDP (Policy Development Process)
- Current Issues
  - Depletion Problem
  - IPv6 and within-IPv4 Solutions



# Policy Development Process: Community's Answer to demand for change





# RIPE PDP Principles

- Open
  - Anyone can participate
  - Policy meetings
  - Mailing lists
- Transparent
  - Mailing lists archived
  - Meetings scribed
- Developed Bottom-up
  - By the Internet Community
- Documented
  - Formal Policy Documents
  - Implementation Procedures



# PDP Summary

- Industry environment and business requirements change
- PDP is there to meet this demand for change
- So the policies do change
- But the principles remain the same
- Many policies stayed stable since the beginning



# RIPE PDP Current Issues

- IPv4 depletion
- Policy solutions
  - Increase incentives for IPv6
  - Get ready for IPv4 afterlife

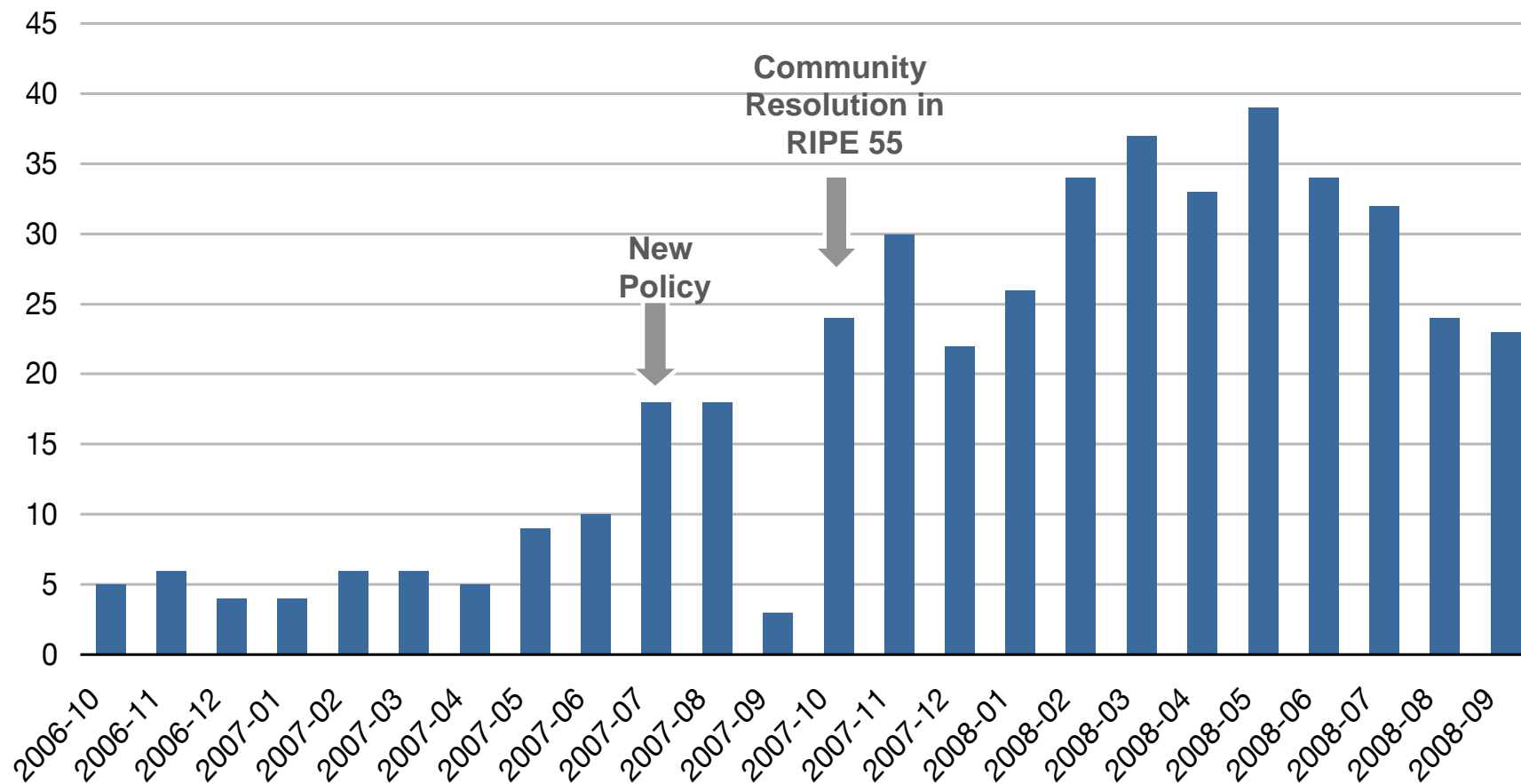


# IPv6

- Proposal 2006-02
- IPv6 Allocation criteria altered
  - No more requirement for assignments to \*others\*
  - No more requirement for 200 customers
- New End Site definition
  - LIRs internal assignments count as End Site
- LIRs: Plan to make sub-allocations to others or assignments to End Sites
- Proposal 2006-01: IPv6 for End Users



# IPv6 Allocations - Last 24 months







# Global Perspective: End of IPv4 free pool

- Global Policy for the Allocation of the Remaining IPv4 Address Space (2008-03)
  - Accepted by all regions and documented
    - <http://www.ripe.net/ripe/docs/ripe-436.html>
  - Distribute the last 5 /8s evenly among RIRs (N=1)
  - Awaiting the Global PDP to be in effect



# RIPE Regional

- Direct Internet Resource Assignments to End Users from the RIPE NCC (2007-01)
  - Contractual relationship for all independent number resources to an End User
  - Have a contract with
    - a sponsoring LIR or
    - the RIPE NCC
  - Applies to previously made assignments
  - Legacy (pre-RIR) space is excluded
  - In Last Call until 13 October 2008



# Transfers

- Enabling Methods for Reallocation of IPv4 Resources (2007-08)
  - IPv4 Exhaustion
  - Applies only to IPv4 PA allocations
  - Only within the RIPE region
  - Similar concept under discussion also in ARIN and APNIC
  - New version (3rd) just published
  - In Review Phase until 16 October



## Soon to be seen...

- Usage of Last /8
  - Already discussed in APNIC
  - Framework for the usage of the very last block
- Efficiency requirement in legacy blocks



# Conclusion

- Increase IPv6 deployment
  - Easier access to resources
  - Raise awareness
    - Several other proposals under discussion
- Get ready for IPv4 afterlife
  - Minimise the impact
  - Increased contact to space holders
  - Increased efficiency in usage
  - Enabling usage of allocated but unused space
  - Pre-RIR blocks to be included in the system
  - Focus on fairness and responsible stewardship



# References

- RIPE PDP
  - <http://www.ripe.net/ripe/docs/pdp.html>
- Document Store
  - <http://www.ripe.net/ripe/docs/>
- Current Proposals
  - <http://www.ripe.net/ripe/policies/proposals/>
- Archived Proposals
  - <http://www.ripe.net/ripe/policies/proposals/archive/>
- Address Policy WG Mailing list
  - <http://www.ripe.net/ripe/maillists/archives/address-policy-wg/>
- Policy Announce Mailing List
  - <http://www.ripe.net/ripe/maillists/archives/policy-announce/>



# Questions?

