



# IP Address Distribution Statistics Update

Arno Meulenkamp  
Technical Advisor/Trainer

arno@ripe.net



# Introduction To The Numbers: IPv4

- A “/8” is 16,777,216 addresses
- There are  $256 * /8s$
- Minimum allocation to LIRs: /21  
- 2048 addresses



# Introduction To The Numbers: IPv6

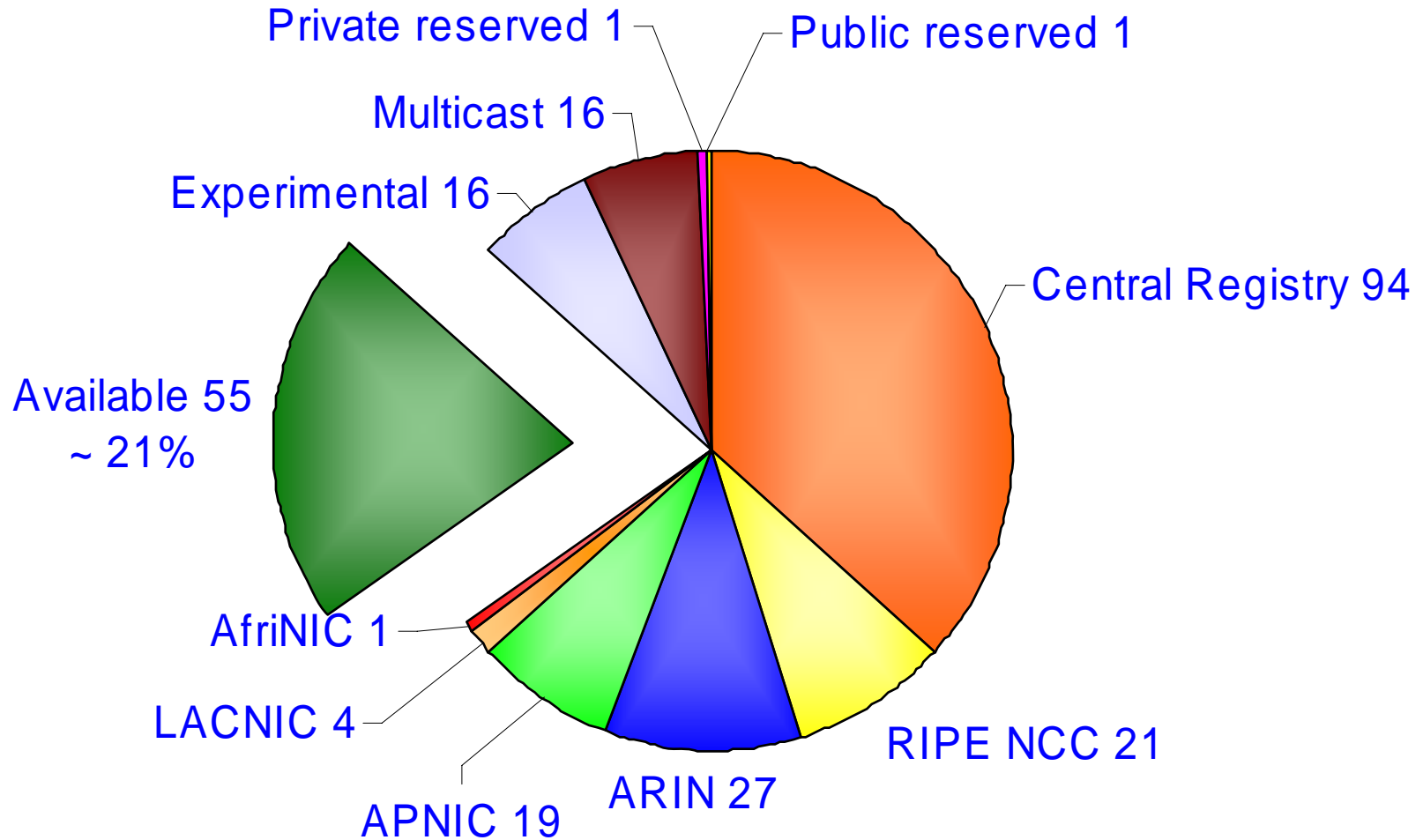
- Millions of times more addresses!
  - When compared to IPv4
  
- Focus is more on networks
  - Not individual addresses



# Introduction To The Numbers: ASN

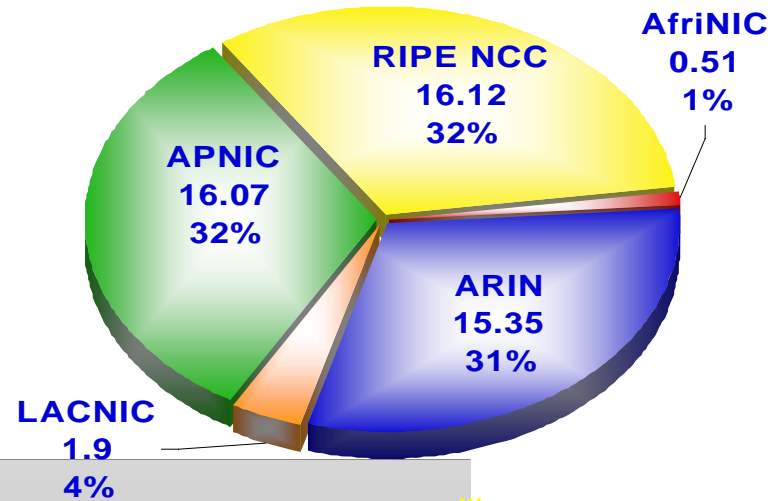
- Autonomous System Numbers
  - Routing Identifier
- Initially 65,536 ASNs available
- Now billions more: ASN32
  - Introduction phase until 2010
  - Available from 1 January 2007

# Global IPv4 Usage in /8s

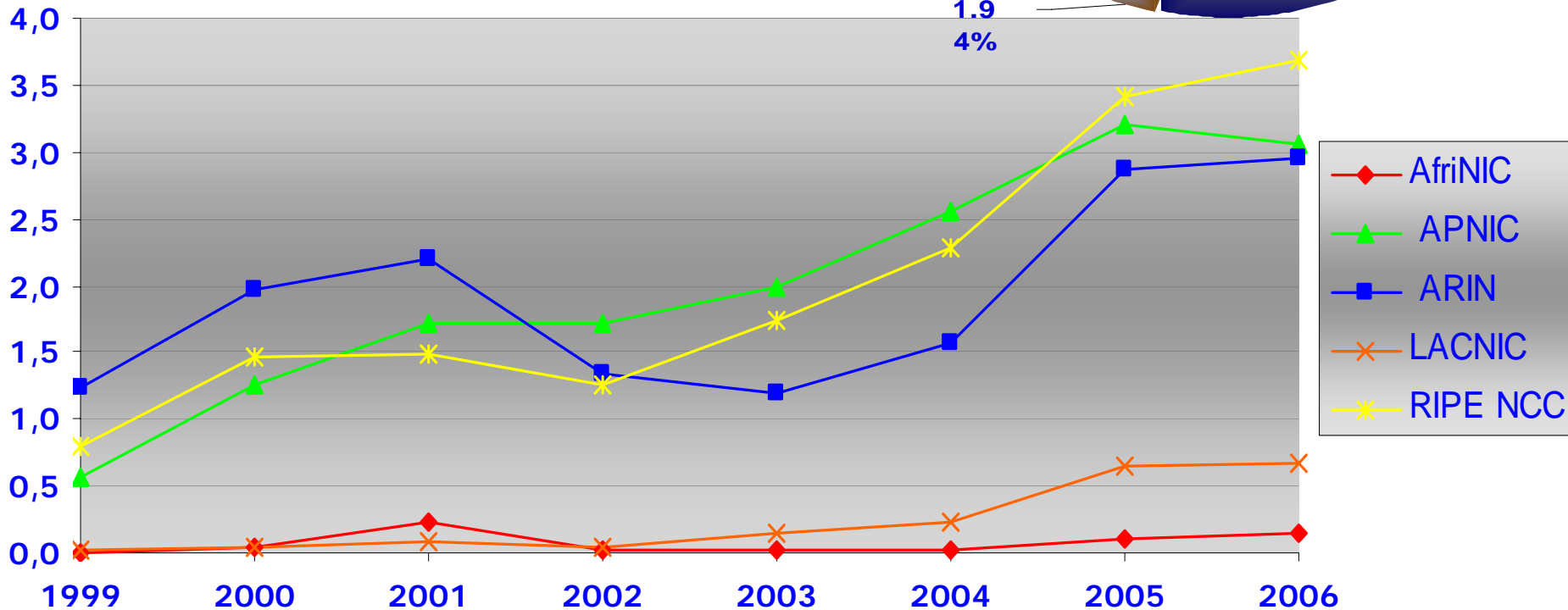


# IPv4 Allocations RIRs to LIRs/ISPs

## Cumulative Total (1999–2006)



## Yearly Comparison (/8s)

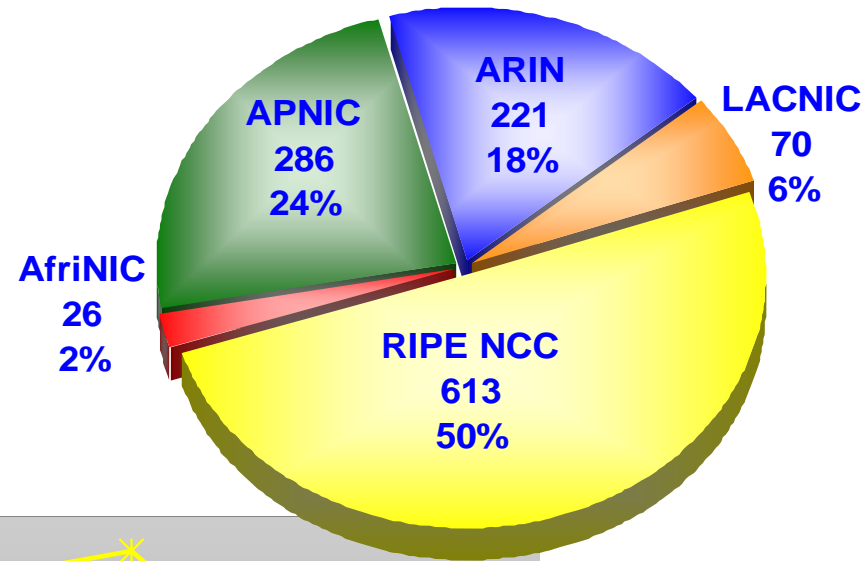




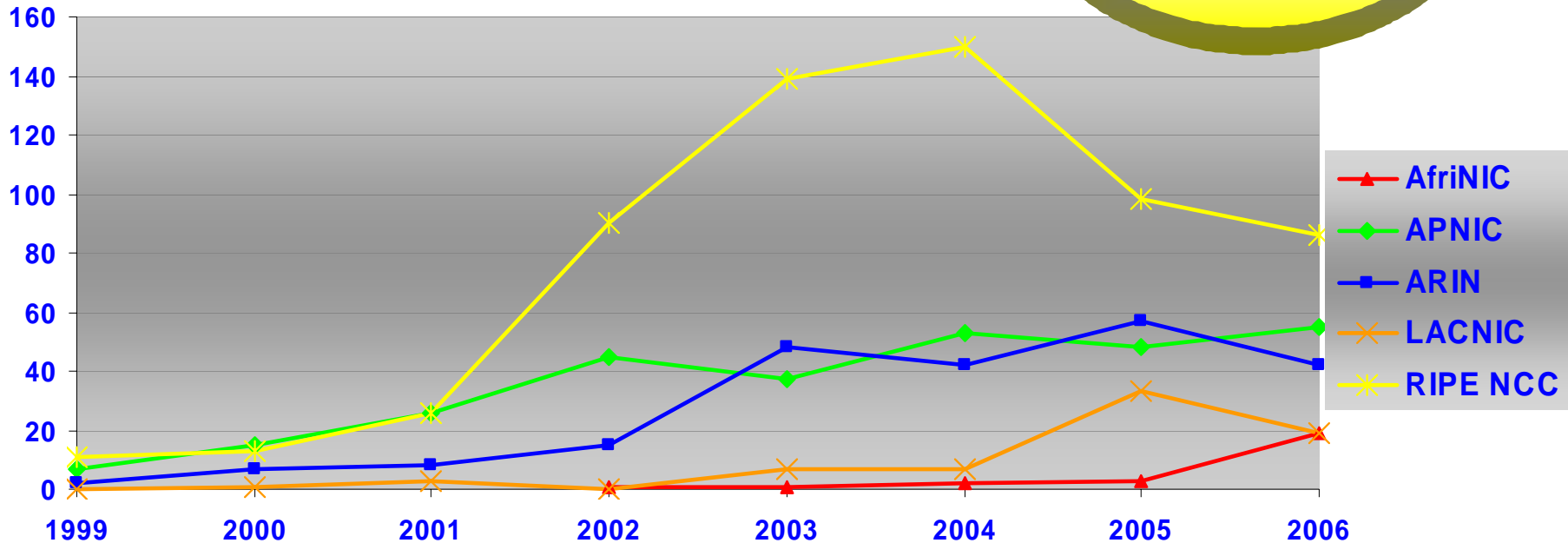
# IPv6 Allocations

## RIRs to LIRs/ISPs

### Cumulative Total (1999–2006)



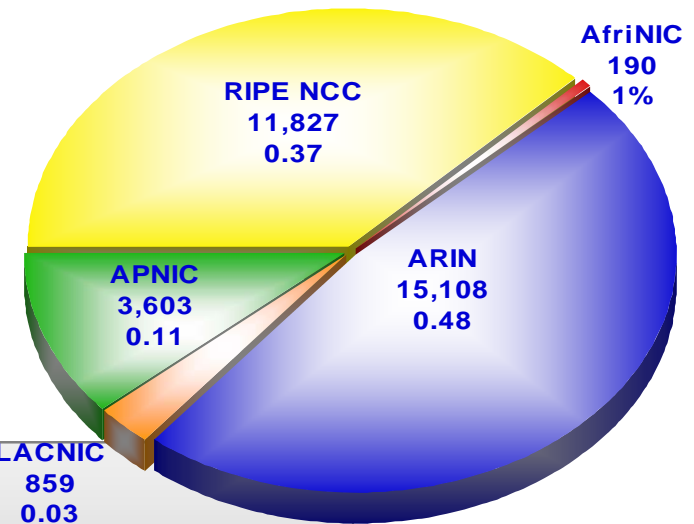
### Yearly Comparison



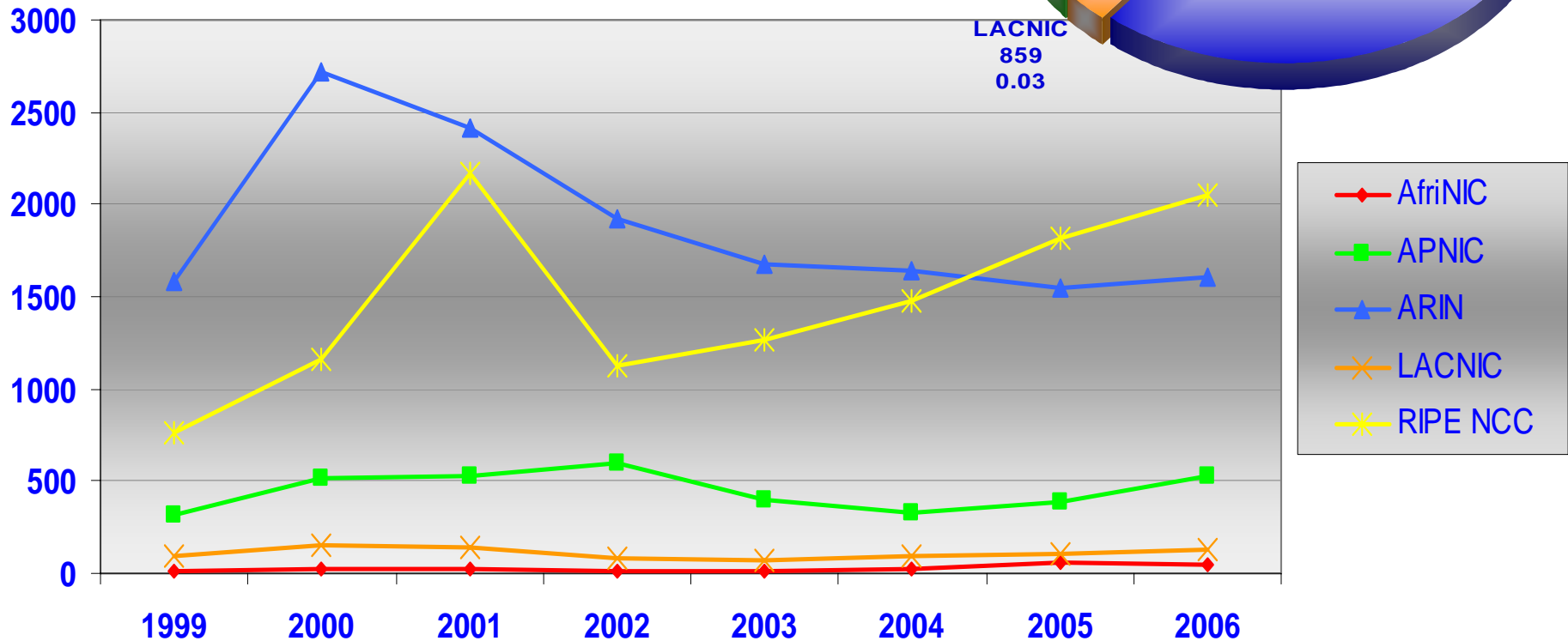


# ASN Assignments

## Cumulative Total (1999–2006)



## Yearly Comparison







# Links to RIR Statistics

- RIR Stats:

<http://www.nro.net/statistics/>

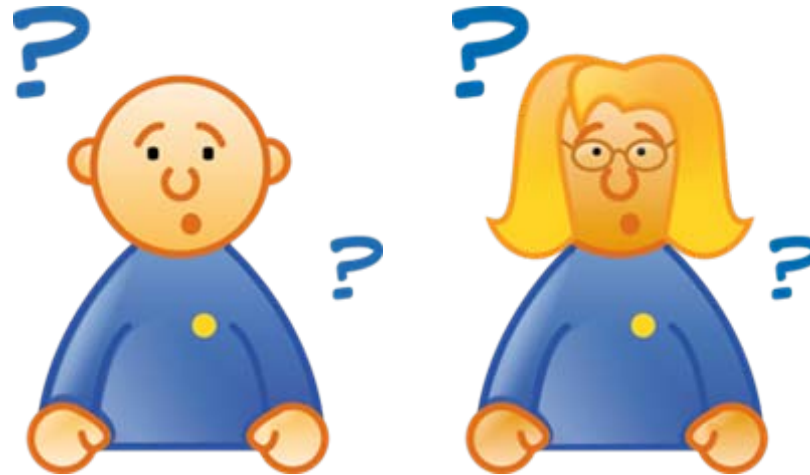
- Raw Data/Historical RIR Allocations:

<http://www.aso.icann.org/stats>

<http://www.iana.org/assignments/ipv4-address-space>

<http://www.iana.org/assignments/as-numbers>

<http://www.iana.org/assignments/ipv6-unicast-address-assignments>



# Questions?