

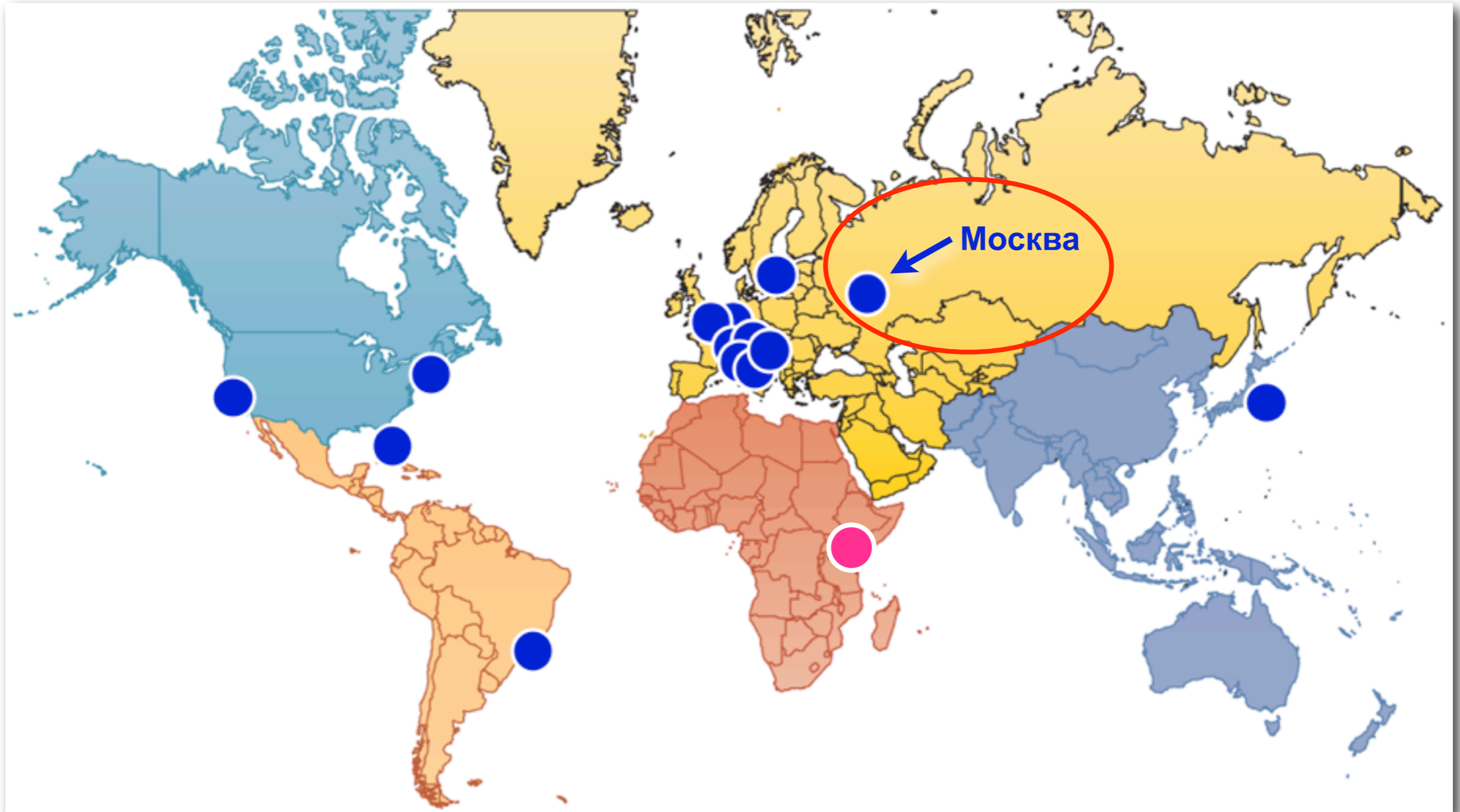


# RIPE NCC *NetSense*

Routing Information (and more)

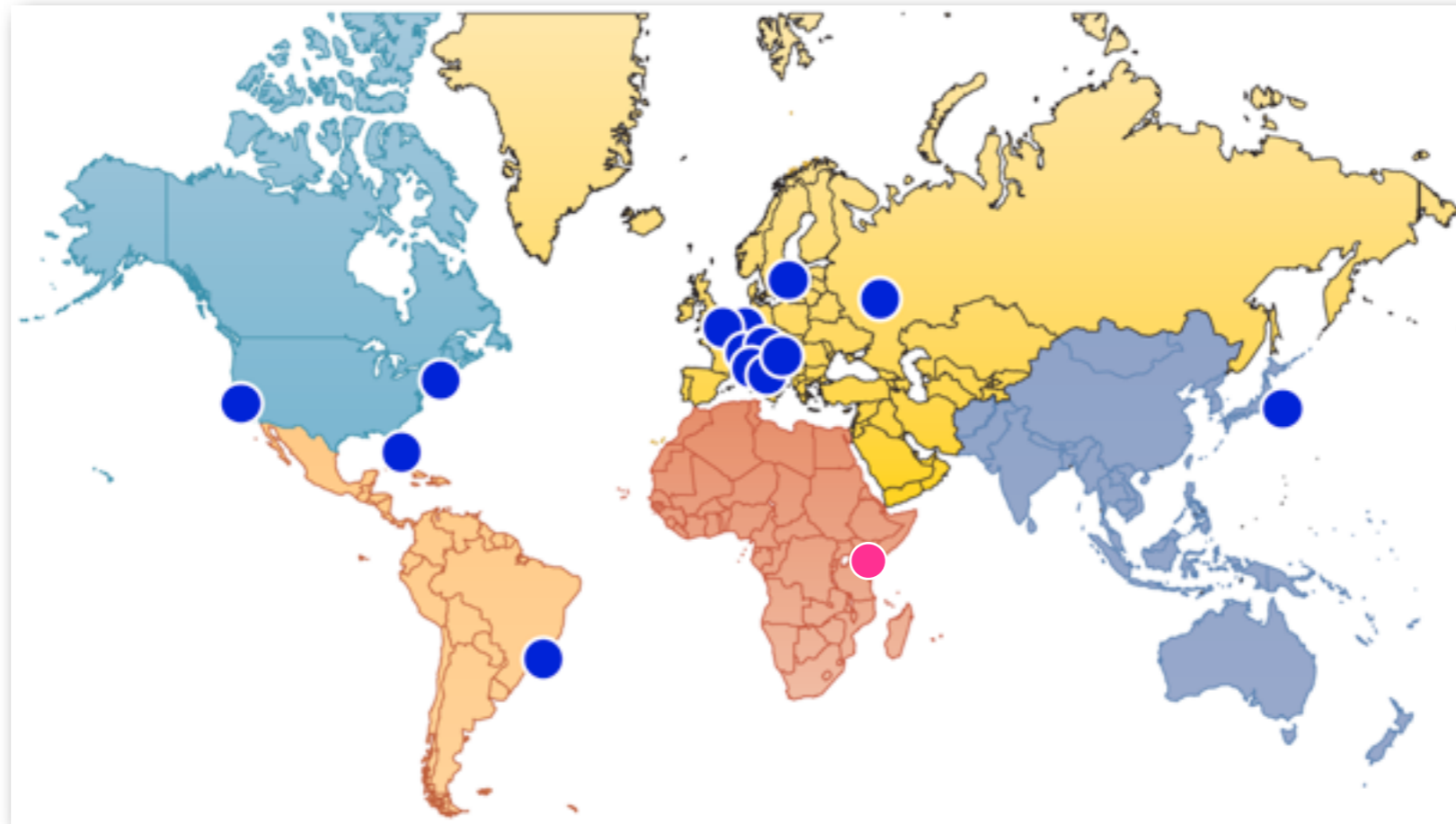
Mark Dranse  
[markd@ripe.net](mailto:markd@ripe.net)

# Routing Information Service - RIS



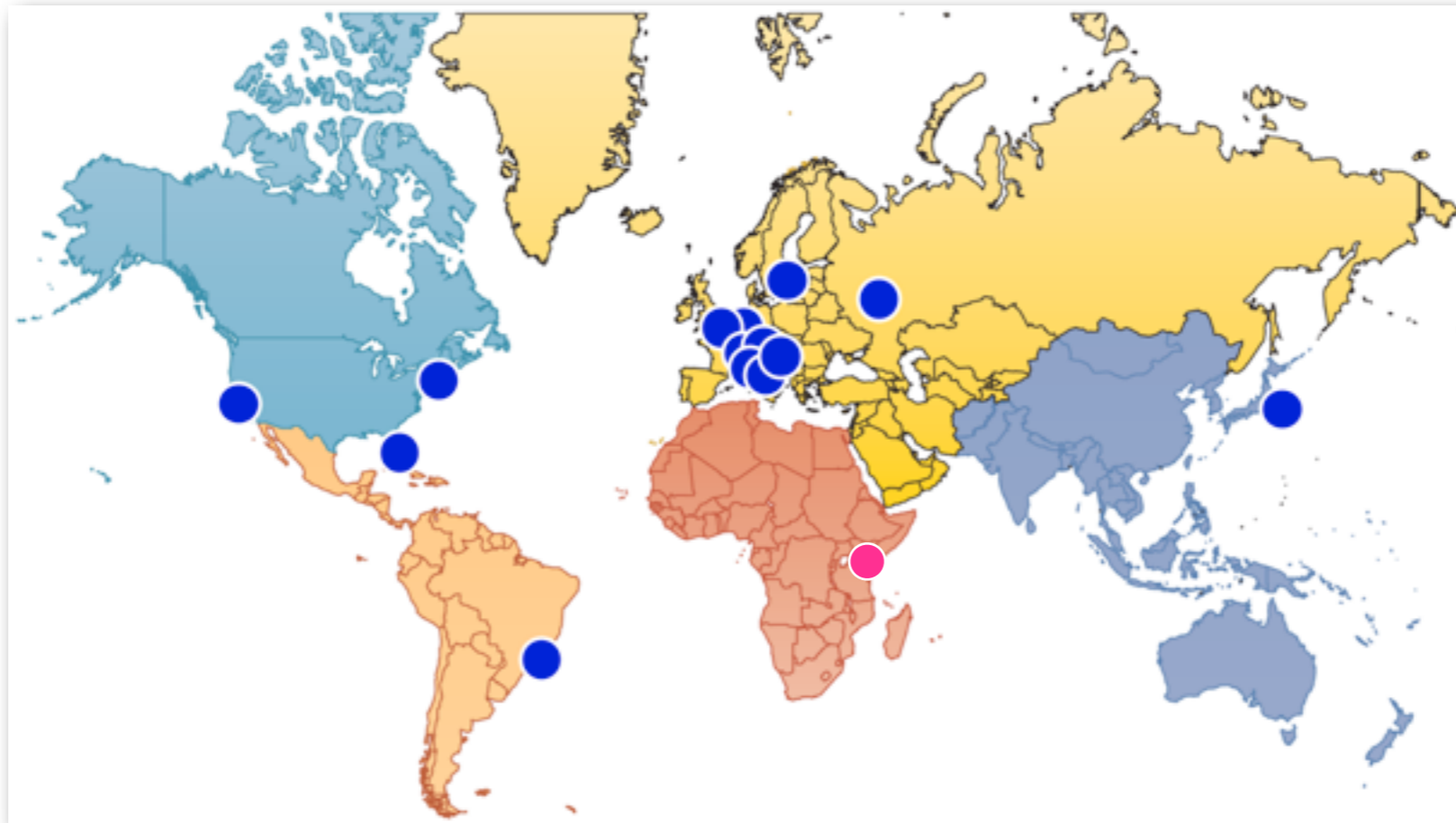


# Routing Information Service - RIS



<http://www.ripe.net/ris>

# Routing Information Service - RIS



- Routing Information Service (RIS)
  - 10 years of BGP data
  - 600 peers
  - 16 Internet Exchange Points

**<http://www.ripe.net/ris>**



# Routing Information Service - RIS



**We need IPv6 peers!**

**RIS is now IPv6 capable at MSK-IX**

**Please email [ris@ripe.net](mailto:ris@ripe.net) if you  
can offer a v6 feed**

- 600 peers
- 16 Internet Exchange Points

**<http://www.ripe.net/ris>**





# RIS Tools

RIPE NCC
LIR Portal
RIPE

[About RIPE NCC](#) | [Contact](#) | [Search](#) | [Sitemap](#)

**RIPE  
NCC**

## Routing Information Service

you are here: [home](#) -> [RIPE NCC Projects](#) -> [RIS](#)

**RIS:**

- [RIS Home Page](#)
- [RIS Raw Data](#)
- [Documentation](#)
- [Analysis using RIS](#)
- [Contact Us](#)
- [Send Feedback](#)

### Routing Information Service (RIS)

RIS is a RIPE NCC project that collects and stores Internet routing data from [several locations](#) around the globe. RIS offers tools that bring this data to the Internet community.

Enter an ASN or prefix and see what RIS knows about it:

#### Tools

- [Visualize](#) routing updates seen by RIS
- [IS Alarms](#) includes **MyASN** alarm type for notifications on rogue announcements of your address space
- [Search](#) allows you to search for specific RIS data using several custom options
- [ASInUse](#) can determine whether an AS is currently in use on the Internet and provide statistical information about its neighbors
- [PrefixInUse](#) can determine when a prefix was last seen on the Internet and who originated it
- [Looking glass](#) allows you to directly query our route collectors
- [RISwhois](#) searches the latest RIS data for details of an IP address. It is useful when querying RIS from scripts. This also has a [web interface](#)

#### Reports/Stats

- [Weekly Statistics Report](#) weekly produced statistics concerning the state and changes of the global routing table
- [RIS report](#) BGP analysis graphs using the RIS data
- [De-Bogonising New Address Blocks](#) allows you to test reachability and view statistics for the visibility of new address blocks over the Internet

#### RIS Status

- [RIS Status Overview](#) lists maintenance announcements, outages and database insertion status

✉ Comments or suggestions can be made by using our [feedback form](#).

#### RELATED TOPICS

- [DNS Monitoring](#)
- [DISI](#)
- [K-root Name Server](#)
- [RRCC](#)
- [TTM](#)

<http://www.ripe.net/ris>



# RIS Tools - asinuse

AS number	<input type="text" value="3333"/>	<input type="button" value="Submit"/>
RRC Box	<input type="text" value="rrc00, RIPE NCC"/>	
Sort results	<input type="text" value="by peer AS"/>	
Time interval	<input type="text" value="1 month"/>	
Output type	<input checked="" type="radio"/> HTML <input type="radio"/> Text	

The RIS database contains data until 2007-08-15 07:55:00Z. Copy [the link](#) to get the URL for this search.

**AS3333** was last announced on 2007-08-15 07:54:52Z. 108 peers are found for **AS3333**.

<u>Neighbor of AS3333</u>	<u>Last seen</u>	<u>ASpath</u>
<a href="#">42</a>	2007-08-15 00:49:01Z	<a href="#">3333</a> <a href="#">42</a> <a href="#">32978</a>
<a href="#">174</a>	2007-08-15 07:51:50Z	<a href="#">3333</a> <a href="#">174</a> <a href="#">9299</a> <a href="#">7491</a>
<a href="#">286</a>	2007-08-15 07:54:13Z	<a href="#">3333</a> <a href="#">286</a> <a href="#">209</a> <a href="#">721</a> <a href="#">27064</a> <a href="#">27066</a> <a href="#">3538</a> <a href="#">5988</a>
<a href="#">702</a>	2007-08-15 07:44:52Z	<a href="#">3333</a> <a href="#">702</a> <a href="#">20485</a> <a href="#">21127</a> <a href="#">8410</a> <a href="#">8410</a> <a href="#">34833</a>
<a href="#">1103</a>	2007-08-15 07:54:51Z	<a href="#">3333</a> <a href="#">1103</a> <a href="#">20965</a> <a href="#">24490</a> <a href="#">24475</a> <a href="#">4621</a>
<a href="#">1126</a>	2007-08-07 04:10:47Z	<a href="#">3333</a> <a href="#">1126</a> <a href="#">21286</a>
<a href="#">1257</a>	2007-08-15 07:03:42Z	<a href="#">3333</a> <a href="#">1257</a> <a href="#">42732</a> <a href="#">21042</a>
<a href="#">1299</a>	2007-08-15 07:54:28Z	<a href="#">3333</a> <a href="#">1299</a> <a href="#">5518</a> <a href="#">35809</a>
<a href="#">1836</a>	2007-08-13 00:25:13Z	<a href="#">3333</a> <a href="#">1836</a>



# RIPE Tools - reporting and statistics

- RIS weekly reports:
  - Prefix distribution
  - Average AS path lengths
  - Numbers of single and multihomed ASs
  - Martians and hotspots

o List of hot-spots during the week.

Prefix	Origin AS	Number of updates
203.34.88.0/24	18117	2986855
194.110.73.0/24	30850	1062492
62.24.238.0/24	13285	625800
193.242.111.0/24	2128	624969
77.247.128.0/20	43043	515486
221.135.253.0/24	9583	335059
80.243.64.0/20	21332	268483
12.106.30.0/24	22072	265643

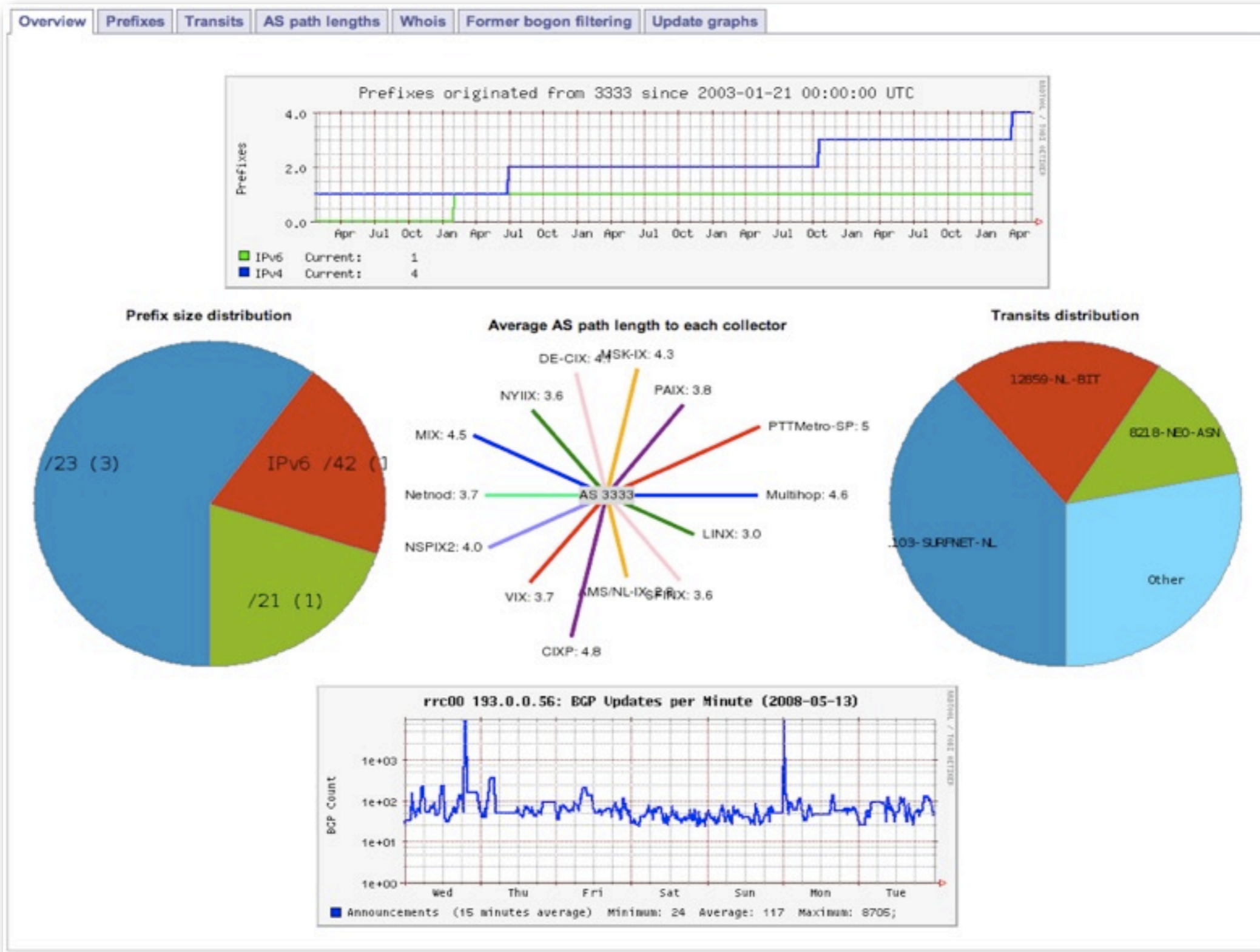
o List of martians appearing throughout the week.

Prefix	Origin AS
10.11.12.0/24	34245
10.90.3.0/24	174
172.16.0.0/16	7908
172.16.2.2/32	8447
192.0.2.0/24	2854
192.168.1.0/24	7908





# RIS - AS Dashboard





# NetSense

RIPE NCC | LIR Portal | RIPE | About RIPE NCC | Contact | Search | Sitemap

2001:610:240:0:193:0:0:202

Quick Links

NetSense

You Are Here: [Home](#) -> [NetSense](#)

[Send us feedback](#)

Find out information about your AS or Prefix

**AS3333 - RIPE-NCC RIPE Network ...**

Prefix :	First Seen :	Last Update :
193.0.18.0/23	1 year ago	27 minutes ago
193.0.20.0/23	1 year ago	27 minutes ago
193.0.12.0/23	1 year ago	27 minutes ago
193.0.22.0/23	6 months ago	27 minutes ago
2001:610:240::/42	3 months ago	4 hours ago
193.0.0.0/21	1 year ago	27 minutes ago

Visibility of AS3333

POWERED BY Google

STABILITY

VISIBILITY

Terms of Use

Don't Filter |  All Issues |  Only Errors

BGP Routing Table :	RIPE Database :	Status :
193.0.18.0/23	193.0.18.0/23	Ok
193.0.20.0/23	193.0.20.0/23	Ok
193.0.12.0/23	193.0.12.0/23	Ok
193.0.22.0/23	193.0.22.0/23	Ok
193.0.0.0/21	193.0.0.0/21	Ok
2001:610:240::/42	Not present	Not present

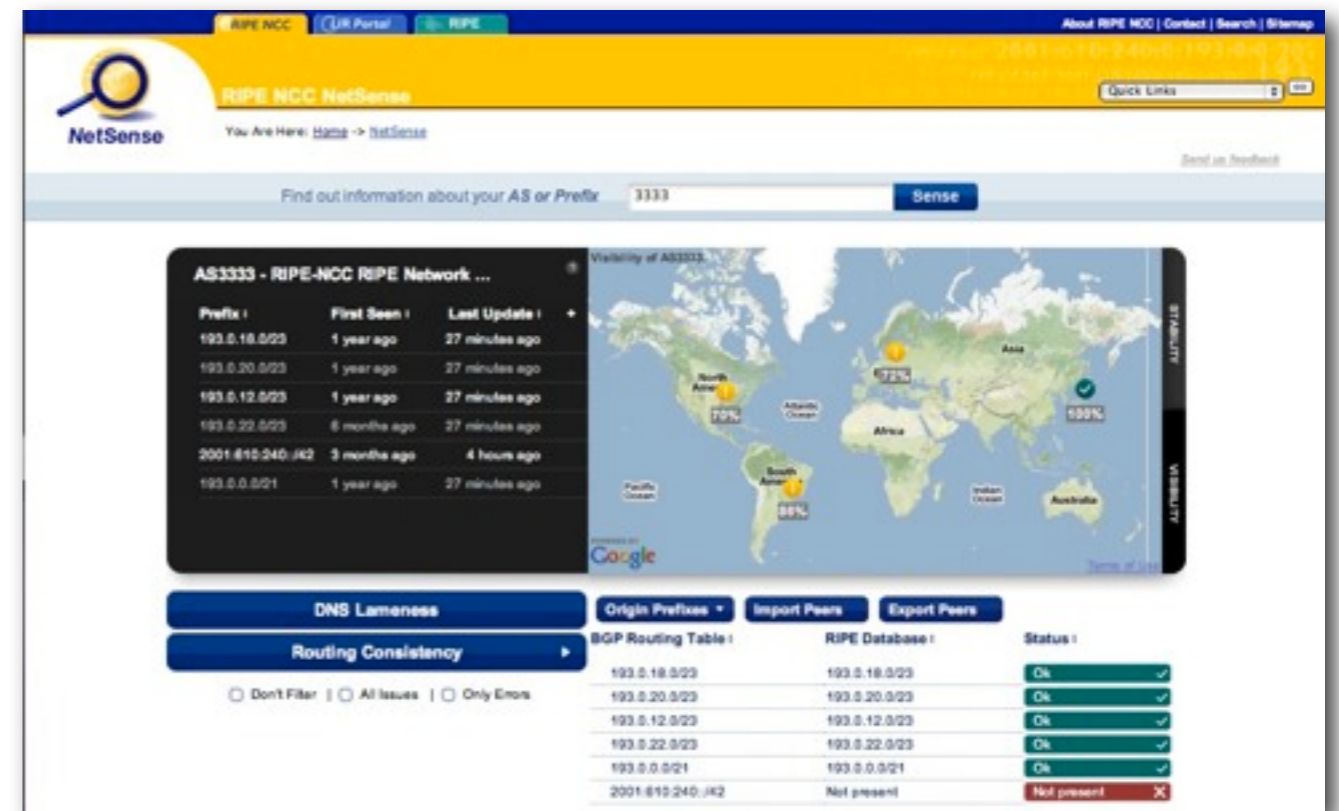
<http://netsense.ripe.net>





# NetSense

- Next generation data visualisation
- Single rich extensible interface
- Available to entire Internet community
- Includes data on
  - BGP visibility
  - BGP stability
  - Routing consistency
  - DNS lameness
- More to come...



<http://netsense.ripe.net>



# NetSense: Evolution

RIPE NCC NetSense

http://netsense.ripe.net

markd@ripe.net | [AS12654](#) | [help](#) | [contact](#) | [logout](#)

NetSense

Overview | Routing | Connectivity | DNS | My Account

Global | [My AS](#) | [My Domain](#)

RIPE NCC NetSense Global Internet Overview

Today | **This week** | This month

World

Routing  
 Connectivity  
 DNS  
 RIPE Maps  
 Select layers

News

- Cable cut in middle east
- k root outage
- youtube hijack
- ipv4 depletion imminent
- moscow regional meeting
- bgp experiment with DUK
- analysis on 4 byte AS num
- ...
- ...

BGP table growth

AS hotspots

twitter feed

Tagcloud

netsense DNS rpk  
 bgp **routing**  
 ip address  
 domain  
 lameness  
 traceroute njack alert  
 alarm

[About RIPE NCC](#) | [Service Announcements](#) | [Site Map](#) | [LIR Portal](#) | [RIPE Labs](#) | [Contact us](#) | [Legal](#) | [Privacy policy](#)





# NetSense: Routing

RIPE NCC NetSense

NetSense

markd@ripe.net | 
 [AS12654](#) | 
 [help](#) | 
 [contact](#) | 
 [logout](#)

Overview | 
 Routing | 
 Connectivity | 
 DNS | 
 My Account

Overview | 
 BGPviz | 
 Debgon | 
 Beacons | 
 Monitoring locations

Routing overview for ASxxx

Lorem ipsum dolor sit amet, consectetur adipisicing elit, sed do eiusmod tempor incididunt ut labore et dolore magna aliqua. Ut enim ad minim veniam, quis nostrud exercitation ullamco laboris nisi ut aliquip ex ea commodo consequat. Duis aute irure dolor in reprehenderit in voluptate velit esse cillum dolore eu fugiat nulla pariatur. Excepteur sint occaecat cupidatat non proident, sunt in culpa qui officia deserunt mollit anim id est laborum. Lorem ipsum dolor sit amet, consectetur adipisicing elit, sed do eiusmod tempor incididunt ut labore et dolore magna aliqua. Ut enim ad minim veniam, quis nostrud exercitation ullamco

Prefix	First Seen	Last Update
193.0.18.0/23	1 year ago	23 minutes ago
193.0.20.0/23	1 year ago	1 hour ago
193.0.12.0/23	1 year ago	23 minutes ago
193.0.22.0/23	8 months ago	1 hour ago
2001:610:240::/42	4 months ago	3 hours ago
193.0.0.0/21	1 year ago	23 minutes ago

DNS Lameness
Origin Prefixes
Import Peers
Export Peers

Routing Consistency

Don't filter | 
  All items | 
  Only Errors

BGP Routing Table	RIPE Database	Status
193.0.18.0/23	193.0.18.0/23	<input type="checkbox"/> <input checked="" type="checkbox"/>
193.0.20.0/23	193.0.20.0/23	<input type="checkbox"/> <input checked="" type="checkbox"/>
193.0.12.0/23	193.0.12.0/23	<input type="checkbox"/> <input checked="" type="checkbox"/>
193.0.22.0/23	193.0.22.0/23	<input type="checkbox"/> <input checked="" type="checkbox"/>
193.0.0.0/21	193.0.0.0/21	<input type="checkbox"/> <input checked="" type="checkbox"/>
2001:610:240::/42	Not present	<input type="checkbox"/> <input checked="" type="checkbox"/>

twitter feed

Tagcloud

netsense DNS rpki  
bgp routing ip  
address domain  
lameness  
traceroute  
hijack  
alert  
alarm

[About RIPE NCC](#) | 
 [Service Announcements](#) | 
 [Site Map](#) | 
 [LIR Portal](#) | 
 [RIPE Labs](#) | 
 [Contact us](#) | 
 [Legal](#) | 
 [Privacy policy](#)

Mark Dranse

RIPE56 / May 2008

<http://www.ripe.net>

11

Wednesday, 6 October 2010



# NetSense: Routing

RIPE NCC NetSense

http://netsense.ripe.net/routing/overview

markd@ripe.net | [AS12654](#) | [help](#) | [contact](#) | [logout](#)

NetSense

Overview | Routing | Connectivity | DNS | My Account

Overview | [BGPviz](#) | [Deboqon](#) | [Beacons](#) | [Monitoring locations](#)

Routing overview for ASxxx

>Lorem ipsum dolor sit amet, consectetur adipiscing elit, sed do eiusmod tempor incididunt ut labore et dolore magna aliqua. Ut enim ad minim veniam, quis nostrud exercitation ullamco laboris nisi ut aliquip ex ea commodo consequat. Duis irure dolor in reprehenderit voluptate velit esse cillum eu fugiat nulla pariatur. Excepteur sint occaecat cupidatat non proident, sunt in culpa qui officia deserunt mollit anim id est laborum. Lorem ipsum dolor sit amet, consectetur adipiscing elit, sed do eiusmod tempor incididunt ut labore et dolore magna aliqua. Ut enim ad minim veniam, quis nostrud exercitation ullamco

Followups to this will be posted at:  
<http://labs.ripe.net>

193.0.20.0/24	193.0.20.0/24	<input checked="" type="checkbox"/>
193.0.12.0/24	193.0.12.0/24	<input checked="" type="checkbox"/>
193.0.12.0/24	193.0.12.0/24	<input checked="" type="checkbox"/>
193.0.0.0/24	193.0.0.0/24	<input checked="" type="checkbox"/>
2001:610:240::/48	Not present	<input type="checkbox"/>

twitter feed

Tagcloud

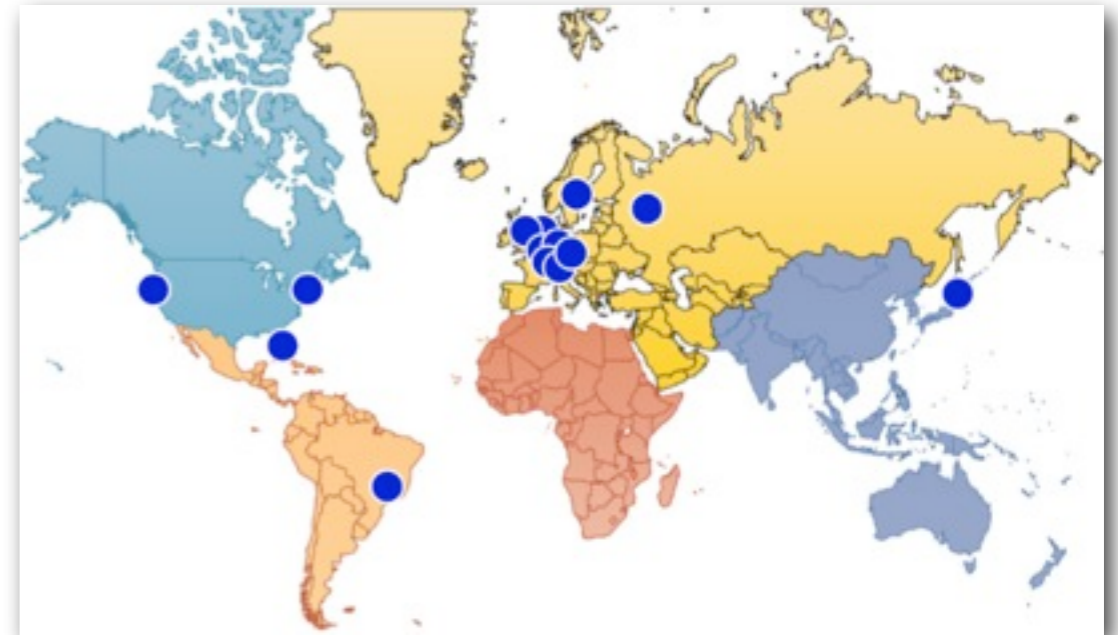
netsense DNS rpki  
bgp routing ip  
address domain  
liveness  
traceroute  
hijack  
alert  
alarm

[About RIPE NCC](#) | [Service Announcements](#) | [Site Map](#) | [LIR Portal](#) | [RIPE Labs](#) | [Contact us](#) | [Legal](#) | [Privacy policy](#)



# RIPE NCC Information Services

- Routing Information Service (RIS)
  - Collects BGP data
  - 600 peers
  - 16 Internet Exchange Points
  - <http://www.ripe.net/ris>
- Test Traffic Measurements (TTM)
  - Measures delay and loss
  - Stores traceroute data
  - Full mesh ~80 nodes
  - <http://www.ripe.net/ttm>
- DNSMON - <http://dnsmon.ripe.net> - Monitors 200+ DNS servers





# Questions?



# Questions?

