



RIPE NCC Draft Charging Scheme 2008 and Administration 2007

Jochem de Ruig
Chief Financial Officer





Contents

- Billing & contract administration
 - General information Billing
 - Russian Billing 2007
 - Discussion – Questions / Answers

- Draft Charging Scheme 2008
 - Membership developments
 - Draft Charging Scheme 2008
 - Question / Answers



General information billing

- LIR Service fees are our main source of income (95%)
- Total amount of around 12 MEUR in 2007
- Approximately 8,000 invoices sent per year
- In 2007 about 100 closures due to non-payment
- Yearly, half-yearly and quarterly invoicing possible
- Online payment system for credit cards - Triple Deal
- Quarter invoices send one month in advance of the Quarter



Status Russian Billing 2007

- Contract structure for Russian
 - Standard Service Agreement (SSA) framework contract
 - Transaction contract (SA) and act of acceptance per invoice/payment
- Service fee (no membership fee)
- Russian VAT – not applicable
- Service fee – CIT, no withholding of income and deductible
- Yearly invoices possible (less costs, more efficient and easier, less chances to default on payment)
- RIPE NCC proof of residency in NL for tax purposes
- All documents → dual language documents



Russian documents on-line - Documents


<http://www.ripe.net/membership/billing/russian/>

Adobe Reader - [engfacts[1].pdf]

File Edit View Document Tools Window Help

Save a Copy Search Select 118% Help Search Web Want to create online forms?

Bookmarks Layers Pages Attachments Comments



New Local Internet Registry (LIR) Fact Book: Russia

- I) How to Become an LIR
- II) Explanation of the RIPE NCC Corporate and Billing Documents
- III) Legal Issues

Part I
How to Become an LIR

The RIPE NCC is a not-for-profit membership association and a Regional Internet Registry (RIR). It works in cooperation with the Internet Assigned Numbers Authority (IANA) and is legitimised by the Internet community to allocate Internet Protocol (IP) addresses (IPv4 and IPv6 addresses) and to assign Autonomous System (AS) Numbers within its [service region](#). The RIPE NCC membership consists of Local Internet Registries (LIRs).

What is an LIR?

An LIR is a member of a RIR, such as the RIPE NCC. A RIPE NCC LIR is responsible for the distribution and registration of Internet number resources at a local level. Organisations that become LIRs are usually Internet Service Providers (ISPs), telecommunication companies, large enterprises and academic institutions. LIRs receive blocks of addresses from the RIPE NCC and assign IP addresses to their customers.

Setting Up a New LIR

RIPE NCC
<new-lir@ripe.net>

1 of 11



Including Russian member Fact sheet

- Fact sheet, in English and Russian
- Applicable Currency law, bank law and civil code
- Document clarification
- Contents are:
 1. Explanation for New LIR
 2. Explanation of corporate and billing documents
 3. Legal and Fiscal issues

<http://www.ripe.net/membership/billing/russian/>



Information & Communication

- Main contact Billing department via e-mail: billing@ripe.net
- For new LIRs e-mail: new-lir@ripe.net
- Invoice information on LIR Portal
- Website for billing information incl new FAQs, payment possibilities, billing procedures and contact information
<http://www.ripe.net/membership/billing/index.html>
- Website for Russian documents:
<http://www.ripe.net/membership/billing/russian/>
- E-mail role account: regional-russia@ripe.net
- All communication in English and/or Russian



Future changes ?

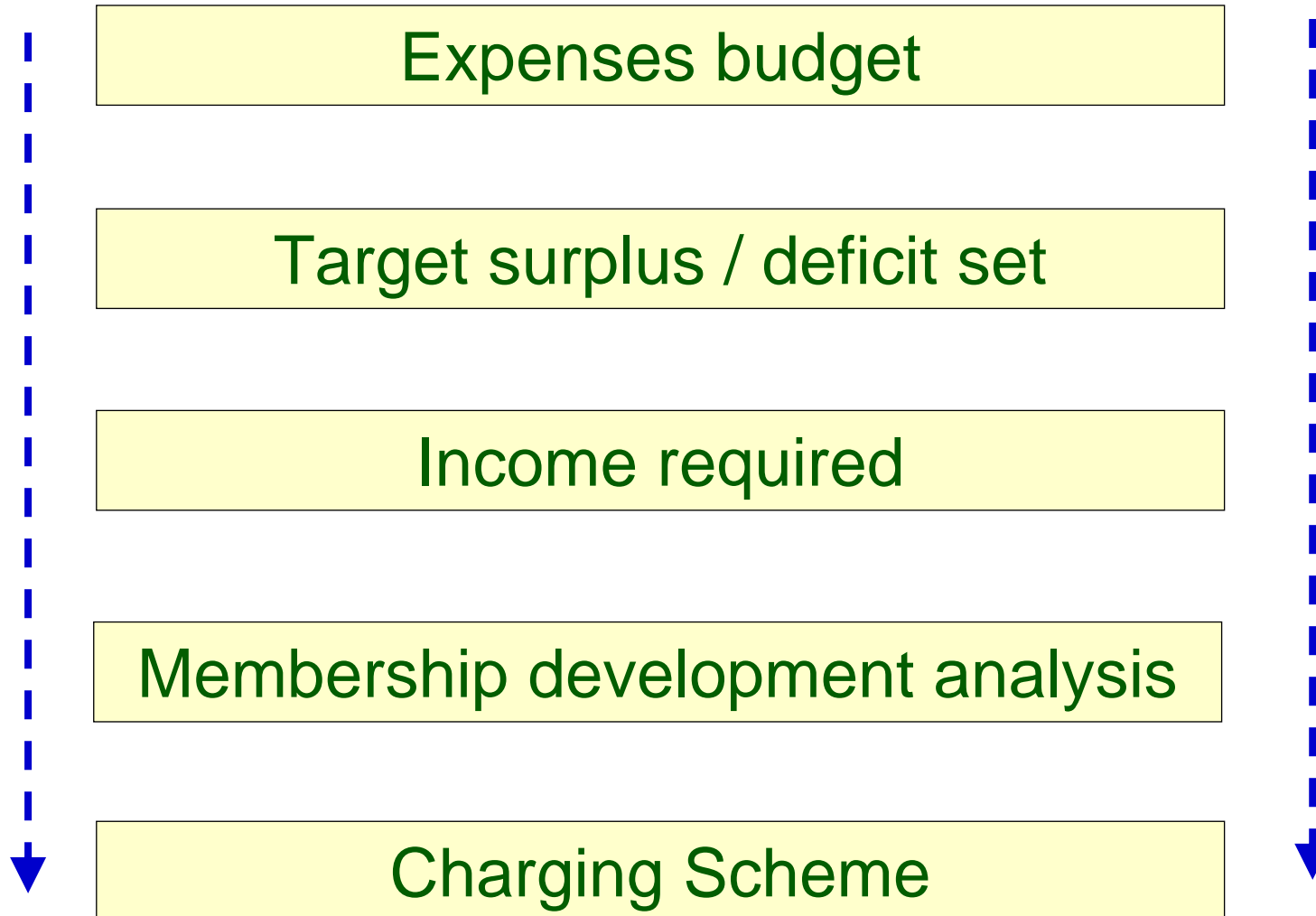
- New invoicing system, implementation in Q1/Q2 2008 - done
- Set up similar structure in other country like UA and KZ - done
- Further improve Billing mailbox response time (CS) - done
- Clear information on Billing Score (LIR Portal?)
- Yearly invoices! (less costs, more efficient and easier, less chance to default on payment)?
- All invoices in one batch in November?
- Any procedure changes, textual changes?

Questions?

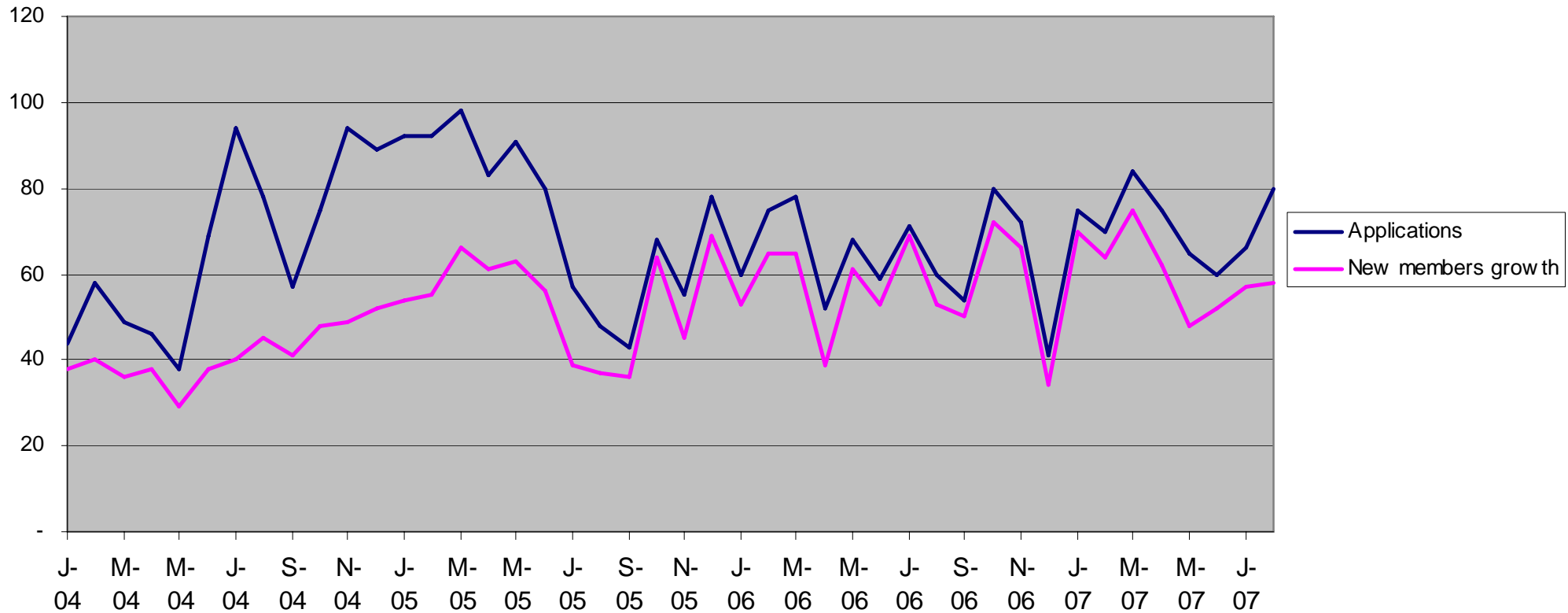
Draft RIPE NCC Charging Scheme 2008

Jochem de Ruig
Chief Financial Officer

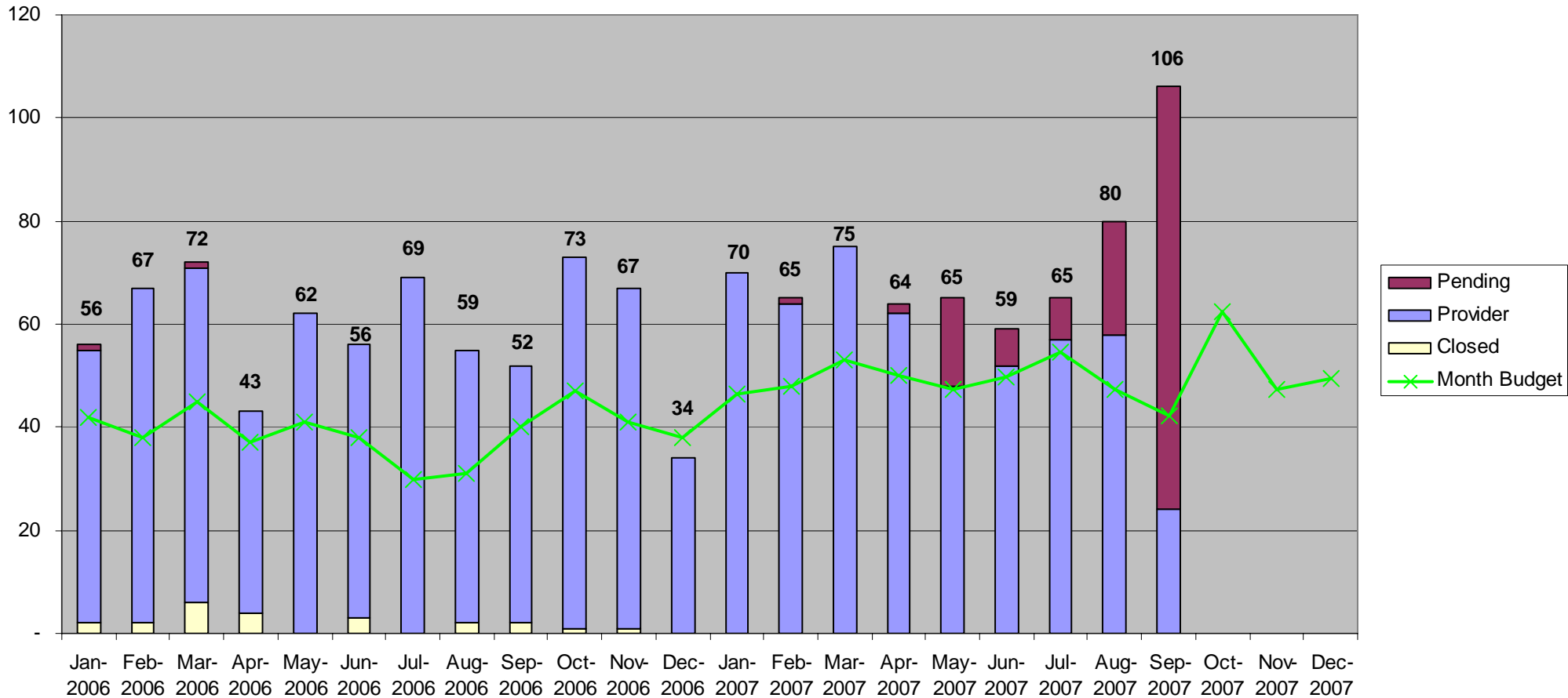
Budget & Charging Scheme Procedure



Membership growth I

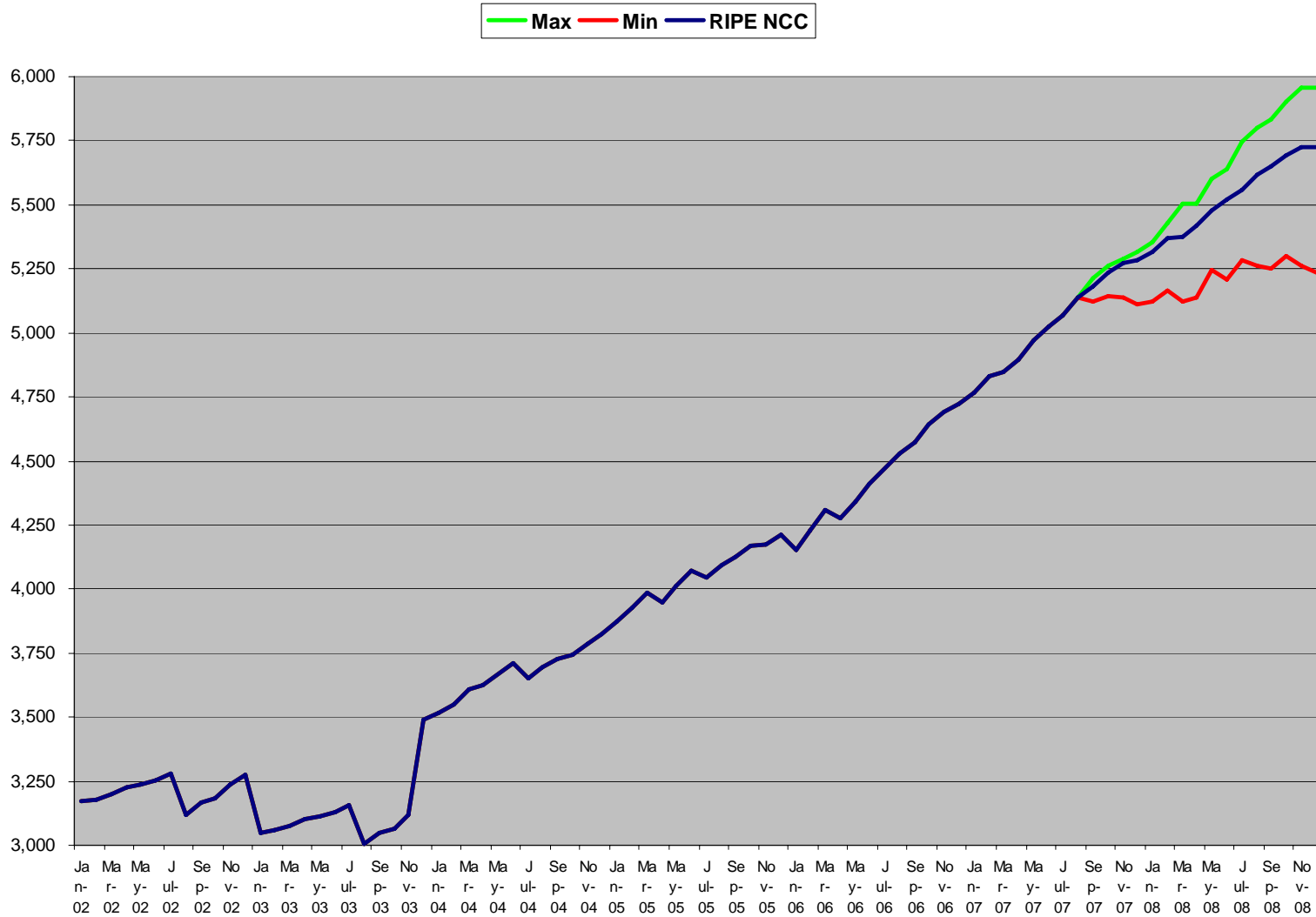


Membership growth II



Membership Growth Prediction

31 Dec 2008
5,959
31 Dec 2008
5,722



Estimated Membership 2008

No of Regs	2004	2005	2006	Projection 2007	Est. 2008
Extra Small	766	1,366	1,553	1,866	1,560
Small	2,126	1,971	2,202	2,328	2,862
Medium	749	697	768	876	1,041
Large	144	137	160	177	208
Extra Large	39	39	39	44	52
Total Membership	3,824	4,210	4,722	5,291	5,722
Net growth %	10%	10%	12%	12%	8%



Charging Scheme 2008

- Service Fee will remain the same as 2007
- No Rebate towards members
- The same Billing score algorithm
- ASN, IPv4 PI and IPv6 direct assign one time score
- Boundaries set % of members per billing category as 2007

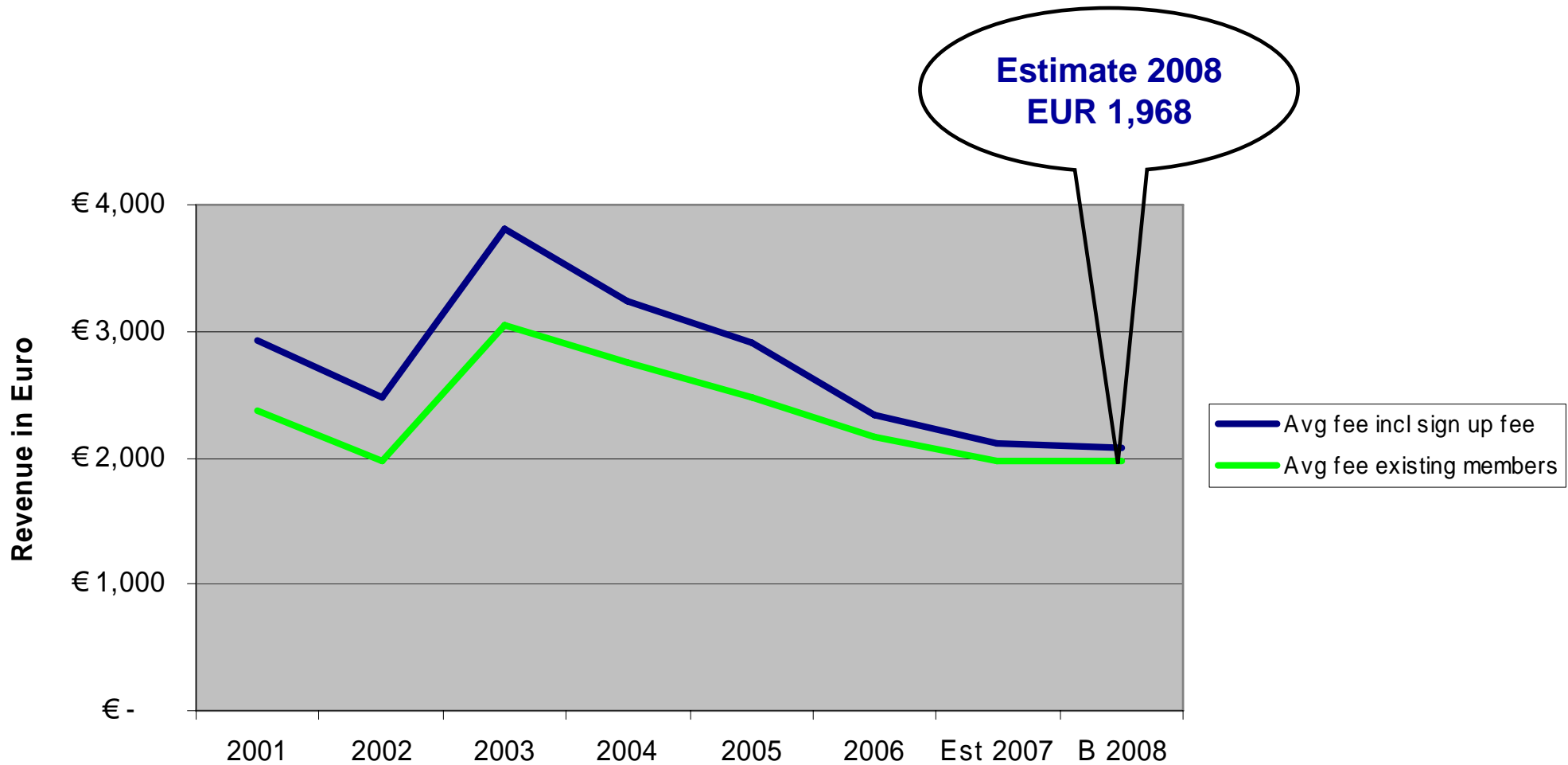


Service Fees 2008

In EUR

Size	2004	2005	2006	2007	2008	Per Q	Per HY
Extra Small	2,000	1,750	1,500	1,300	1,300	325	650
Small	2,500	2,250	2,000	1,800	1,800	450	900
Medium	3,500	3,150	2,750	2,550	2,550	638	1,275
Large	5,000	4,750	4,250	4,100	4,100	1,025	2,050
Extra Large	6,750	6,500	5,750	5,500	5,500	1,375	2,750
Sign up fee	2,500	2,000	2,000	2,000	2,000	-	-
Admin fee	-	1,250	1,000	1,000	1,000	-	-

Average Fee development 2001 – 2008

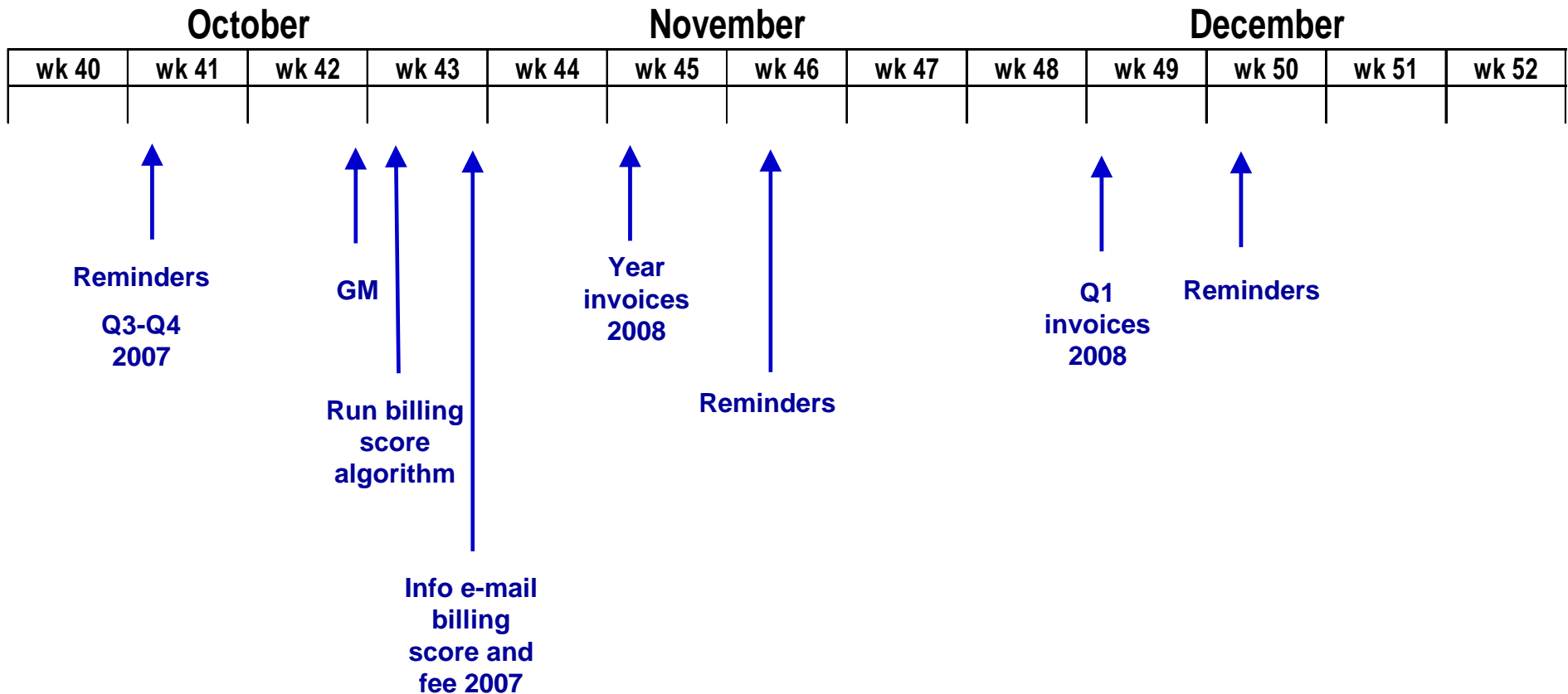


Billing Score Table 2007

IPv4 allocations	IPv6 allocations	ASN assignment	IPv4 PI assignment	IPv6 Direct assignments	Scoring unit
		Only includes assignments made between 1 October 2005 – 30 September 2006			
/22	/33		/25		0.5
/21	/32	1	/24	1	1
/20	/31	2	/23	2	2
/19	/30	4	/22	4	4

Invoicing & Charging Scheme Timeline

2007



Questions?