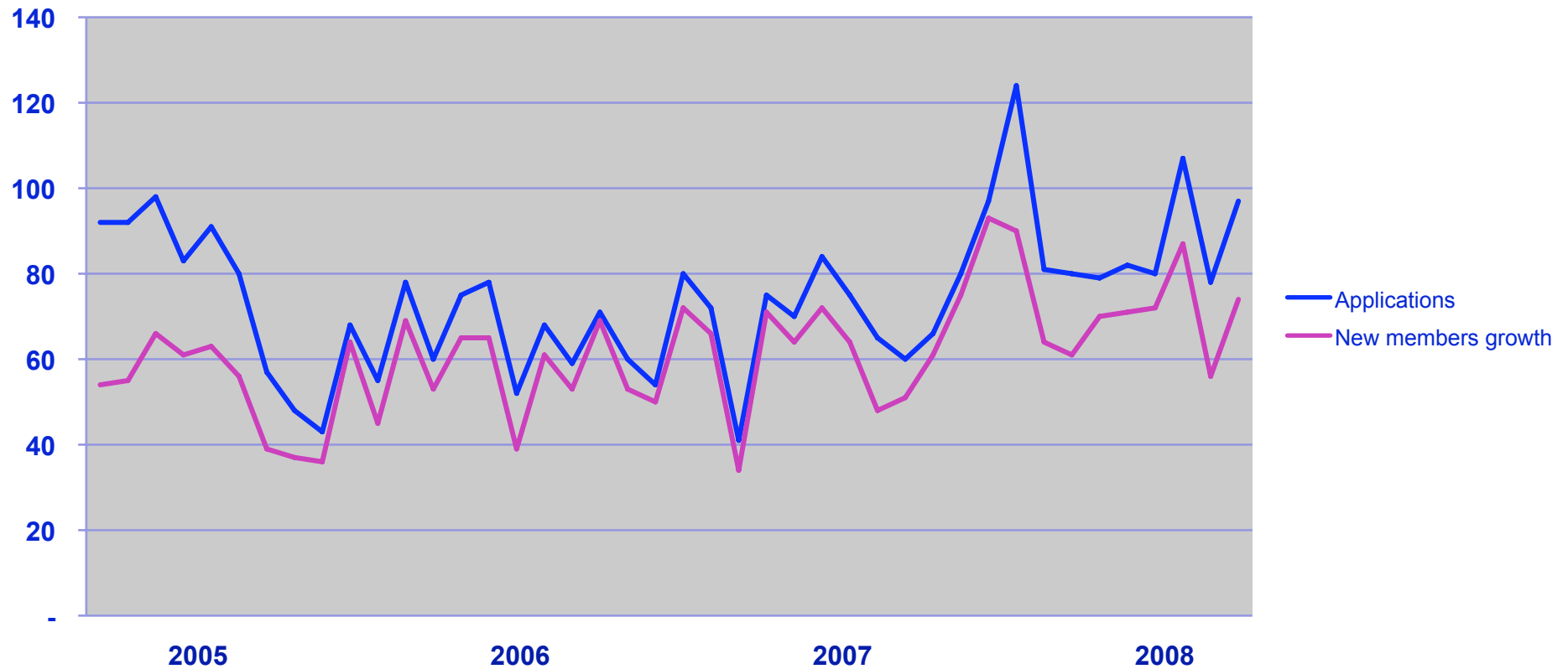




RIPE NCC Charging Scheme 2009

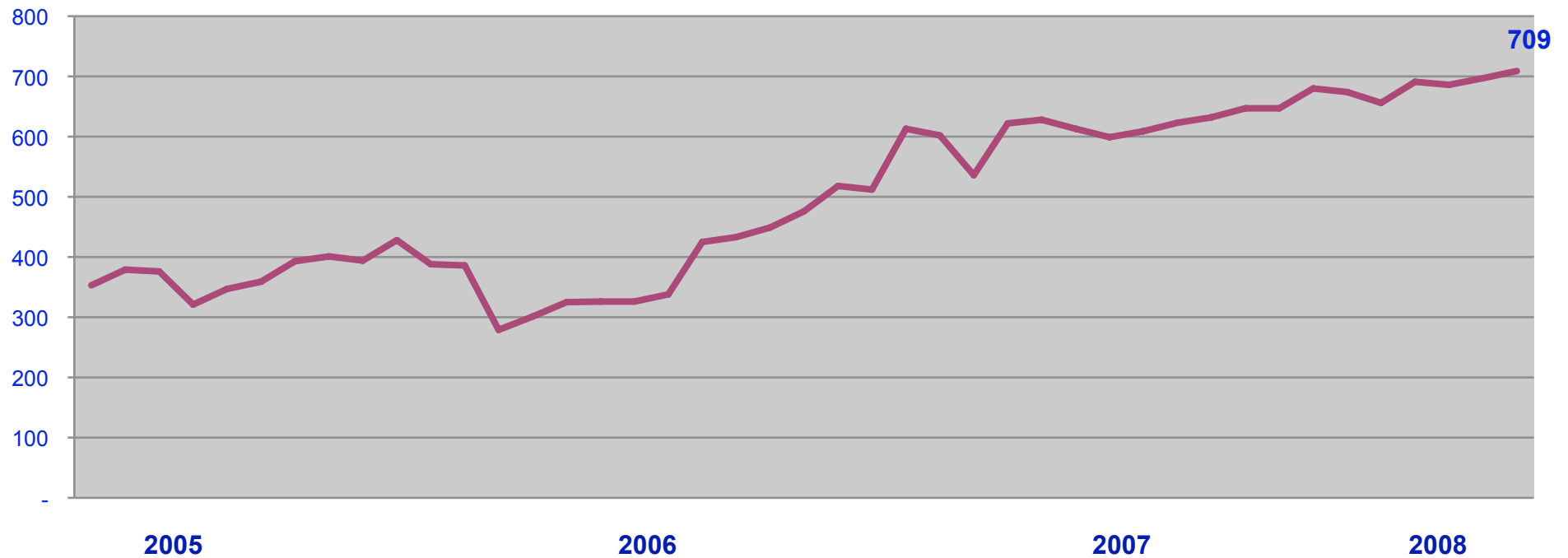
Jochem de Ruig
Chief Financial Officer

Membership growth – New members I

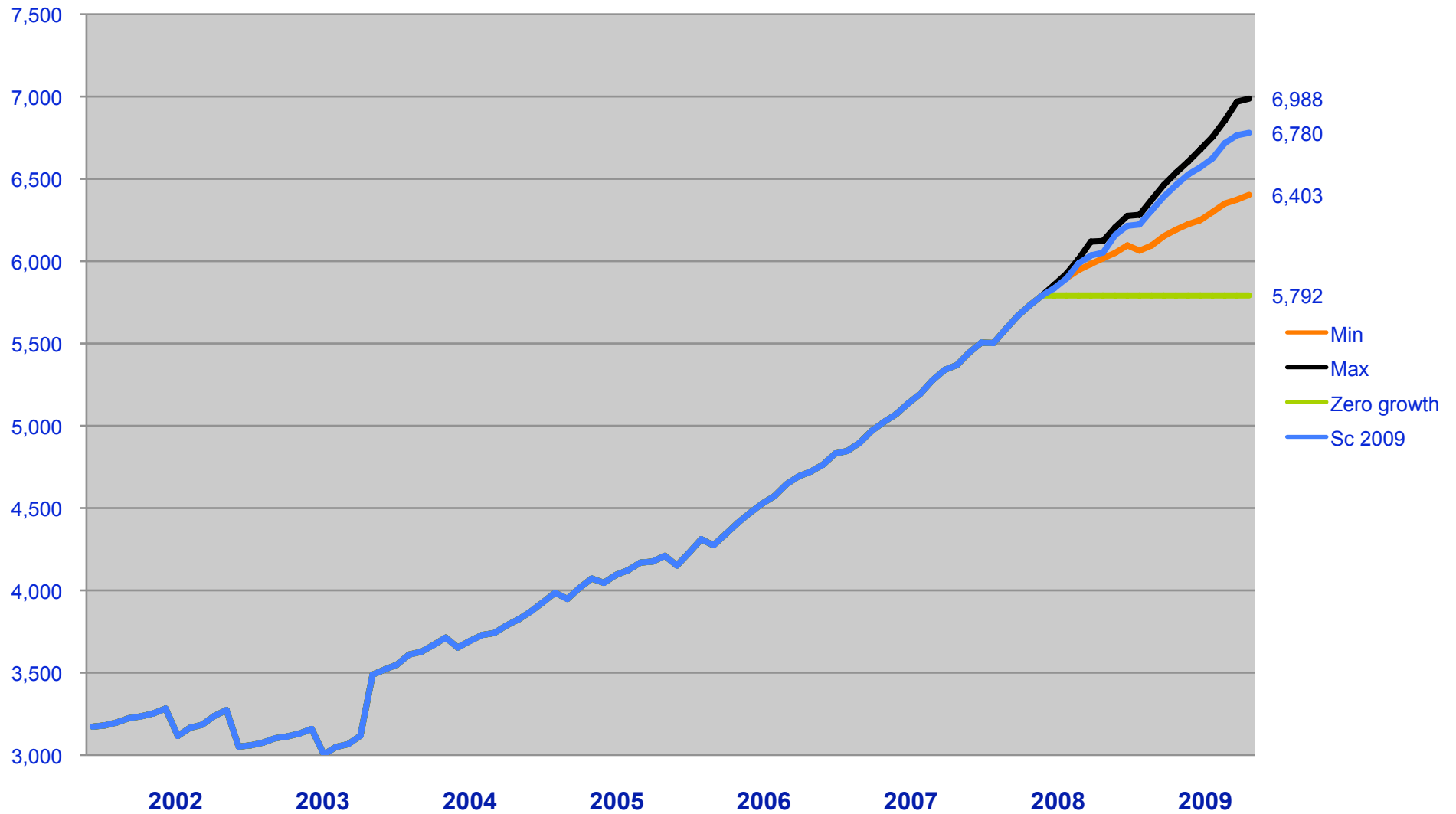


Membership growth – New Members II

12 Months average



Membership Growth Prediction



Estimated Membership 2009

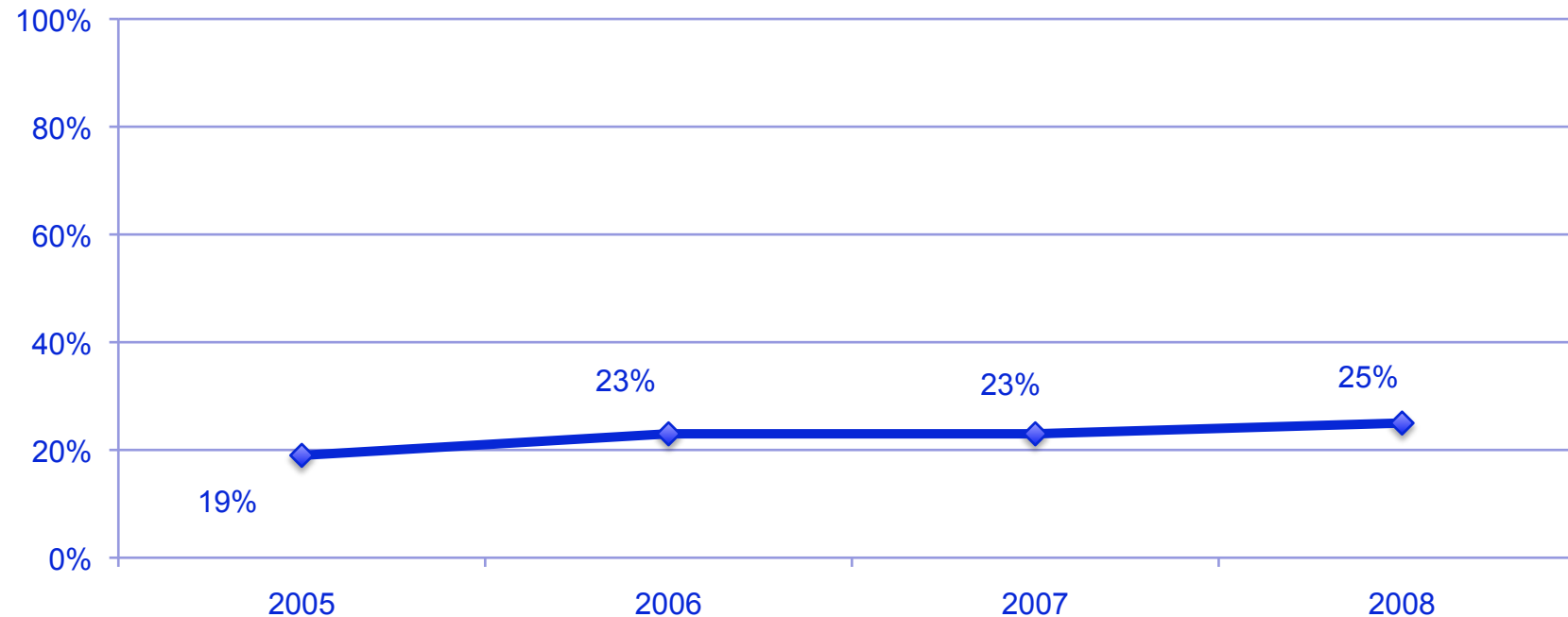
No of Regs	2005	2006	2007	Projection 2008	Est. 2009
Extra Small	1,366	1,553	1,977	2,037	1,436
Small	1,971	2,202	2,314	2,755	3,674
Medium	697	768	860	1,009	1,336
Large	137	160	175	202	267
Extra Large	39	39	43	52	67
Total Membership	4,210	4,722	5,369	6,055	6,780
Net growth %	10%	12%	14%	13%	12%

Draft Charging Scheme 2009

- Service Fee remain the same as 2008
- No Admin fee – to stimulate up-to-date registration
- All assignments are scored in the billing score algorithm
- No changes to the billing category boundaries
- Additional End User Charging Scheme

Category difference over past 4 years

Percentage Category Changes per year



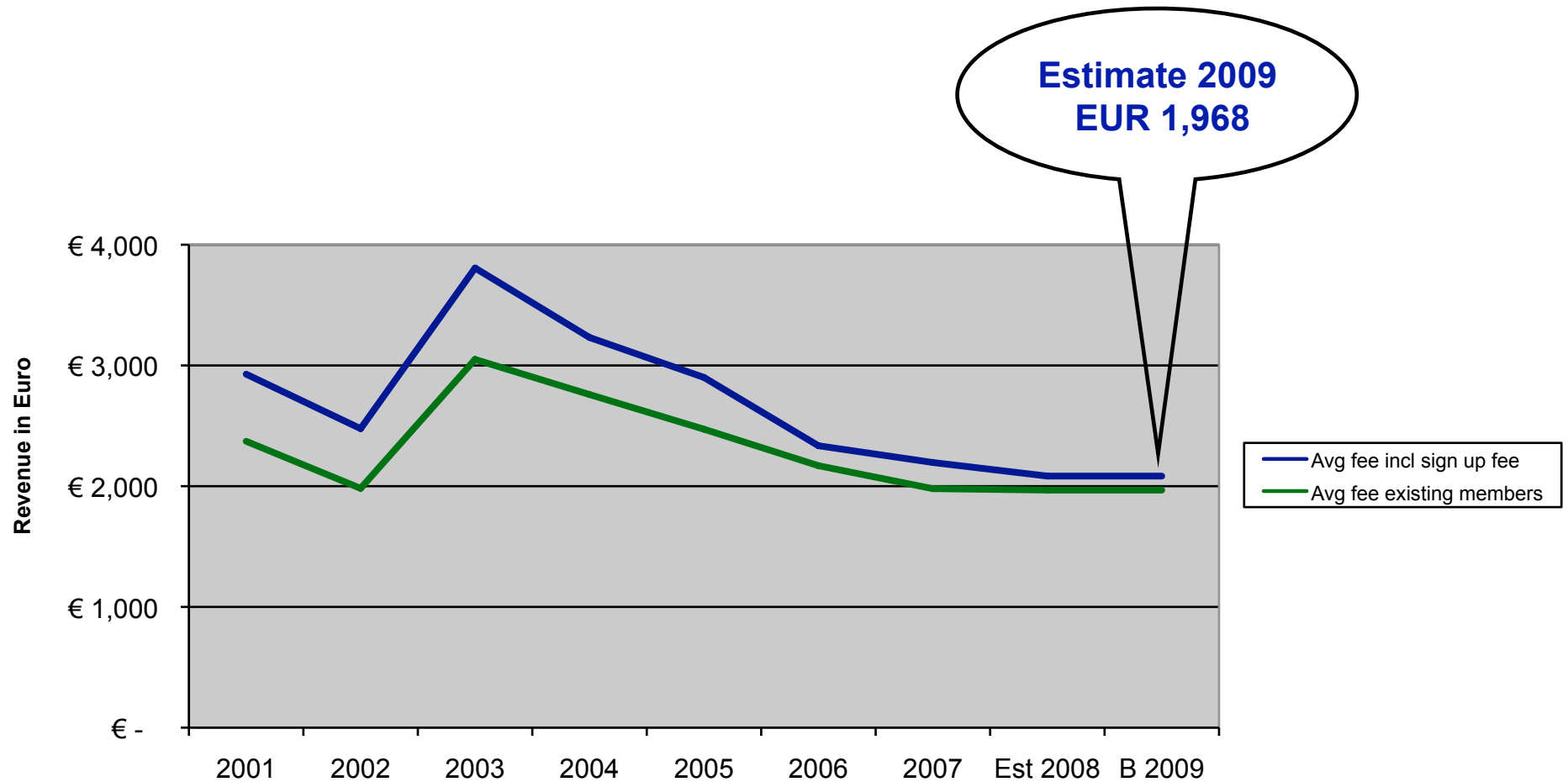
- Small differences in changes over 4 years
- No major impact different scoring PI and ASN

Service Fees 2009

In EUR

Size	2005	2006	2007	2008	2009	Per Q	Per HY
Extra Small	1,750	1,500	1,300	1,300	1,300	325	650
Small	2,250	2,000	1,800	1,800	1,800	450	900
Medium	3,150	2,750	2,550	2,550	2,550	638	1,275
Large	4,750	4,250	4,100	4,100	4,100	1,025	2,050
Extra Large	6,500	5,750	5,500	5,500	5,500	1,375	2,750
Sign up fee	2,000	2,000	2,000	2,000	2,000	-	-
Admin fee	1,250	1,000	1,000	1,000	-	-	-

Average Fee development 2001 – 2009



Questions?