

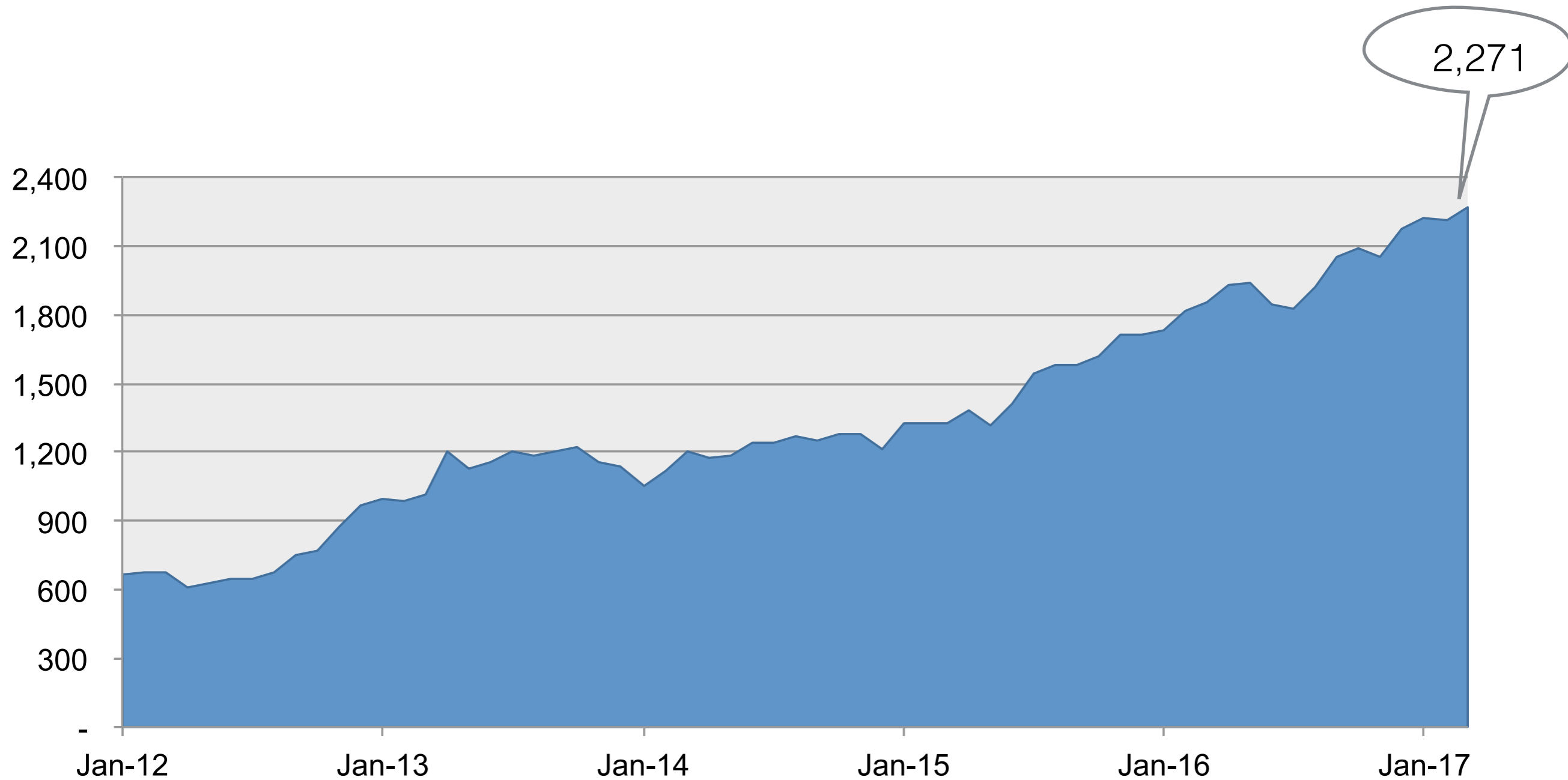


RIPE NCC
RIPE NETWORK COORDINATION CENTRE

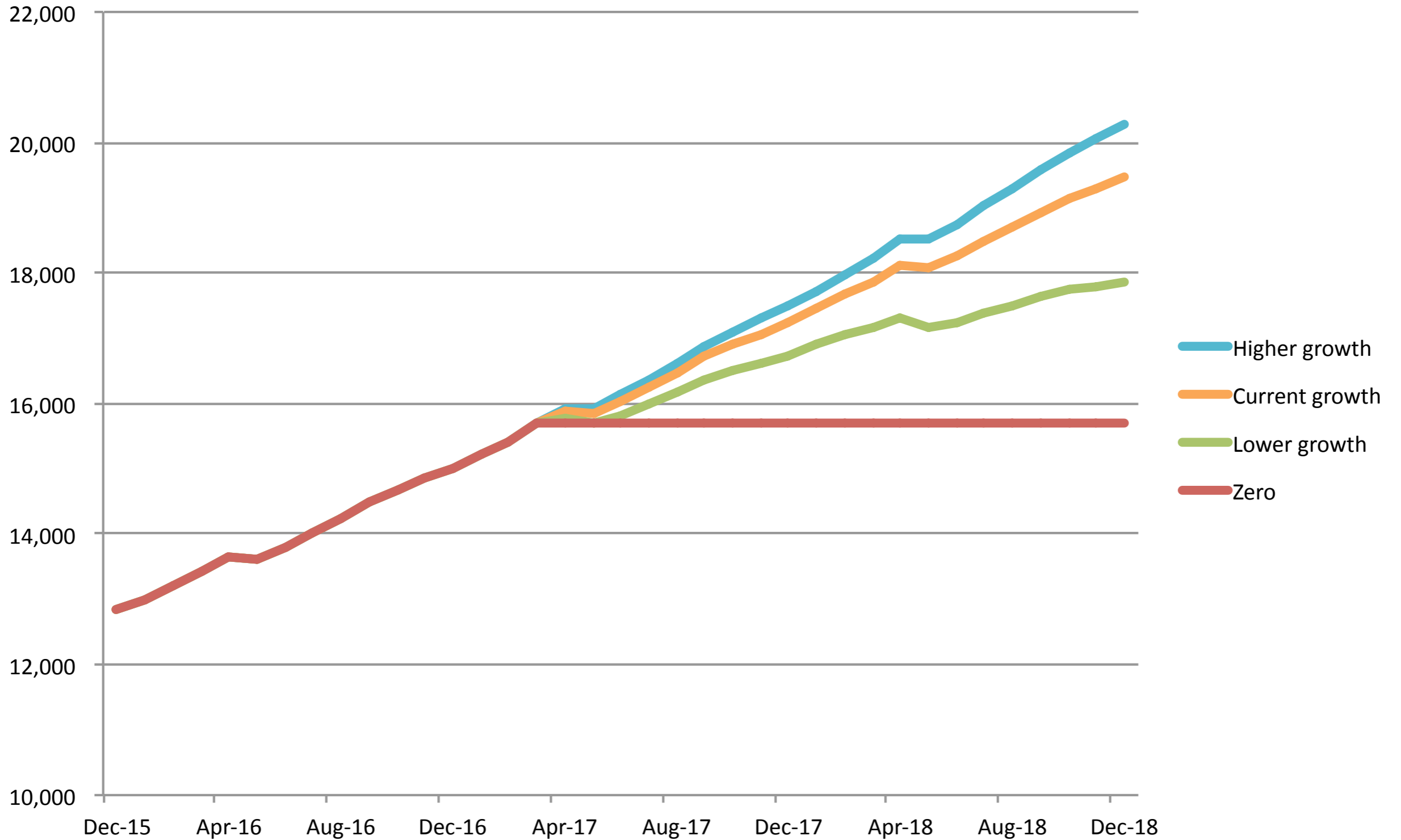
Charging Scheme 2018

Jochem de Ruig
CFO
RIPE NCC

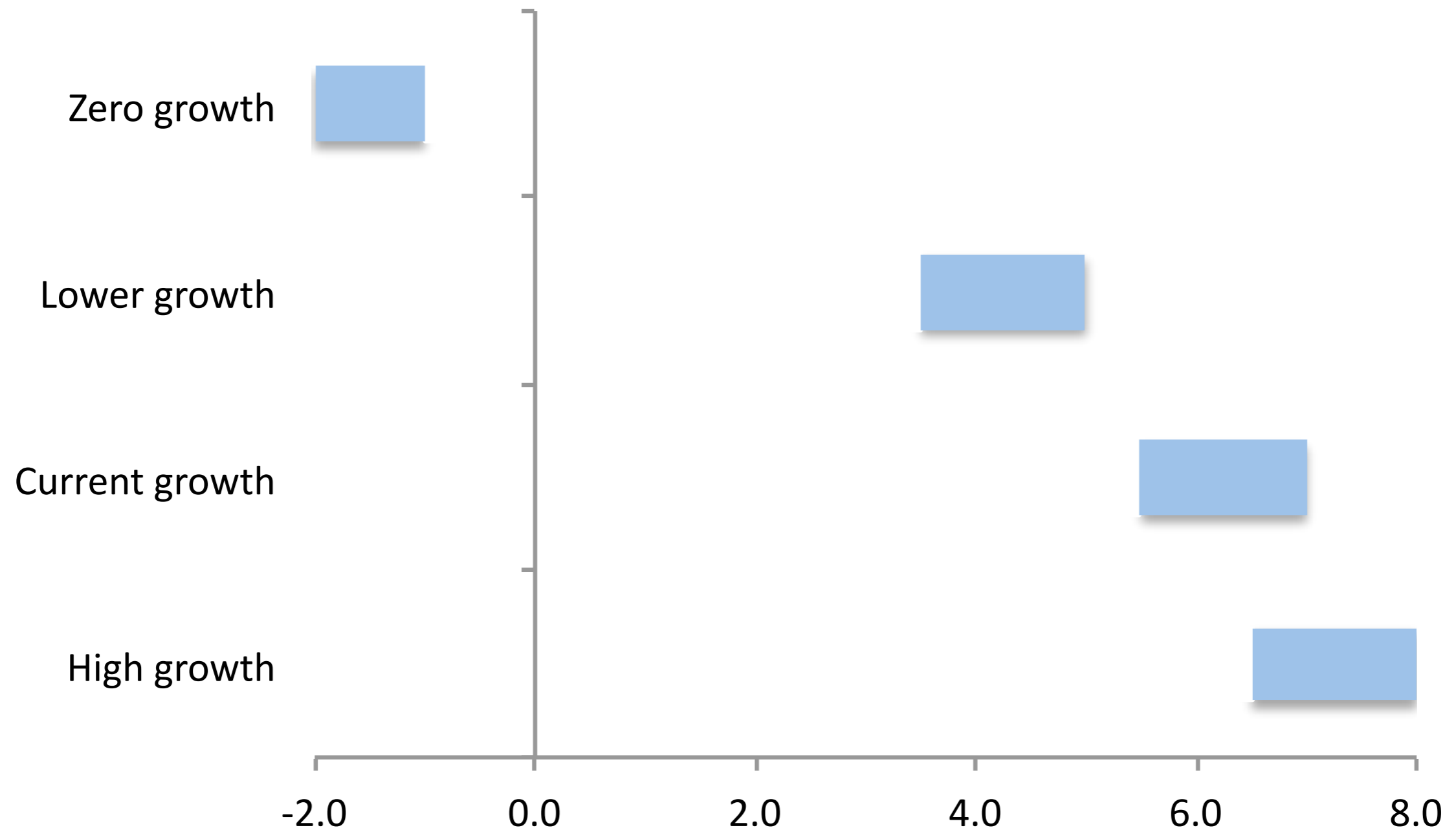
12-Month Membership Development



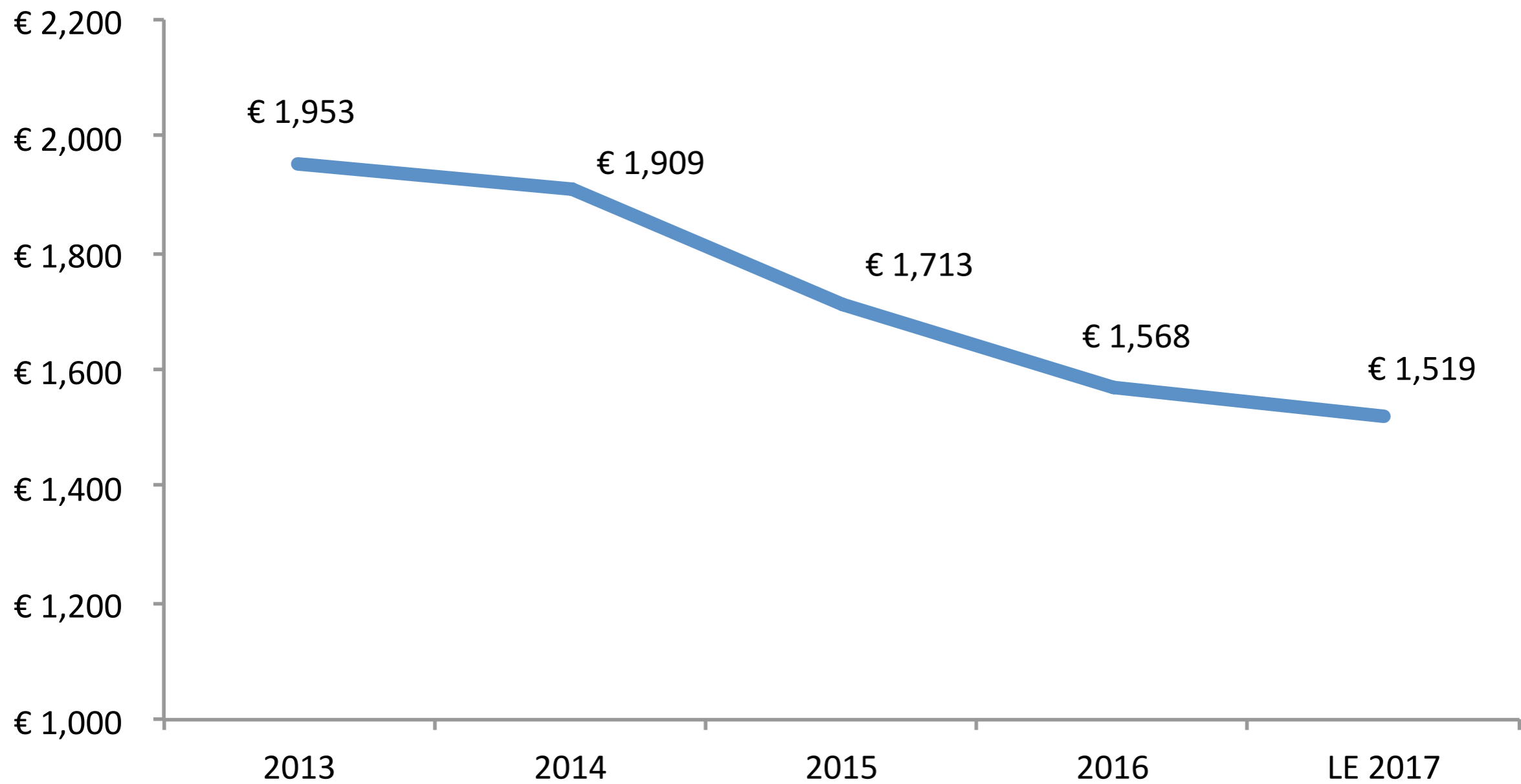
Membership Development Scenarios



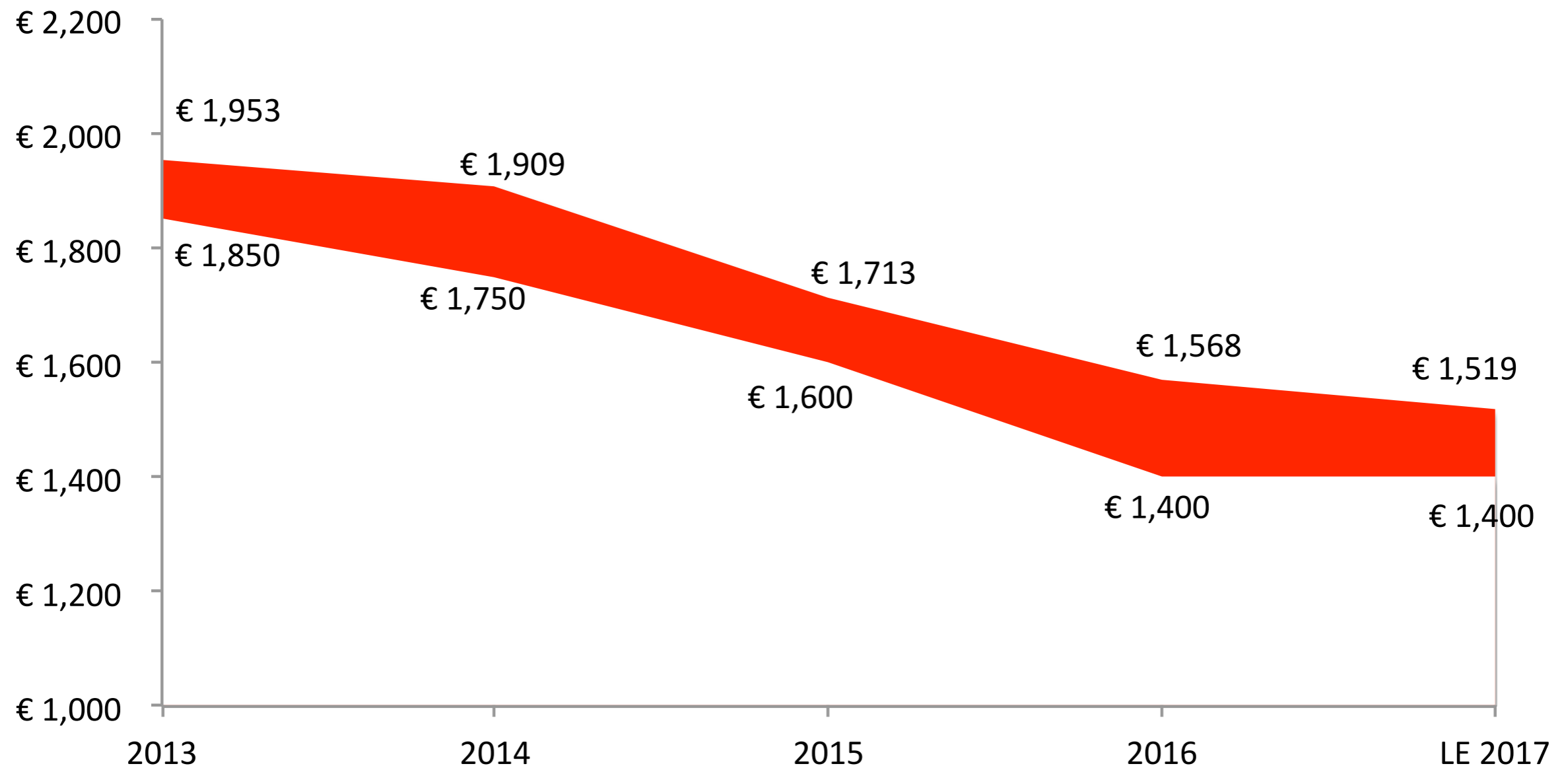
Scenario effects in million EUR



Average Expense per Member



Average Expense vs Service Fee



Considerations



- Redistribution option available
 - Allows for redistribution of excess paid fees
 - Net annual fee is approximately EUR 1,150
- Rewards longer-term members
- RIPE NCC fee already low - lower fees may make abuse more attractive
- Membership growth uncertain

Charging Scheme 2018



- No Change to Charging Scheme 2017
 - Retain the existing Charging Scheme
- Service Fee EUR 1,400
- Per Independent Number Resource Assignment EUR 50
- Sign-up fee EUR 2,000

- Excess funds can be returned via redistribution



Questions



jochem@ripe.net