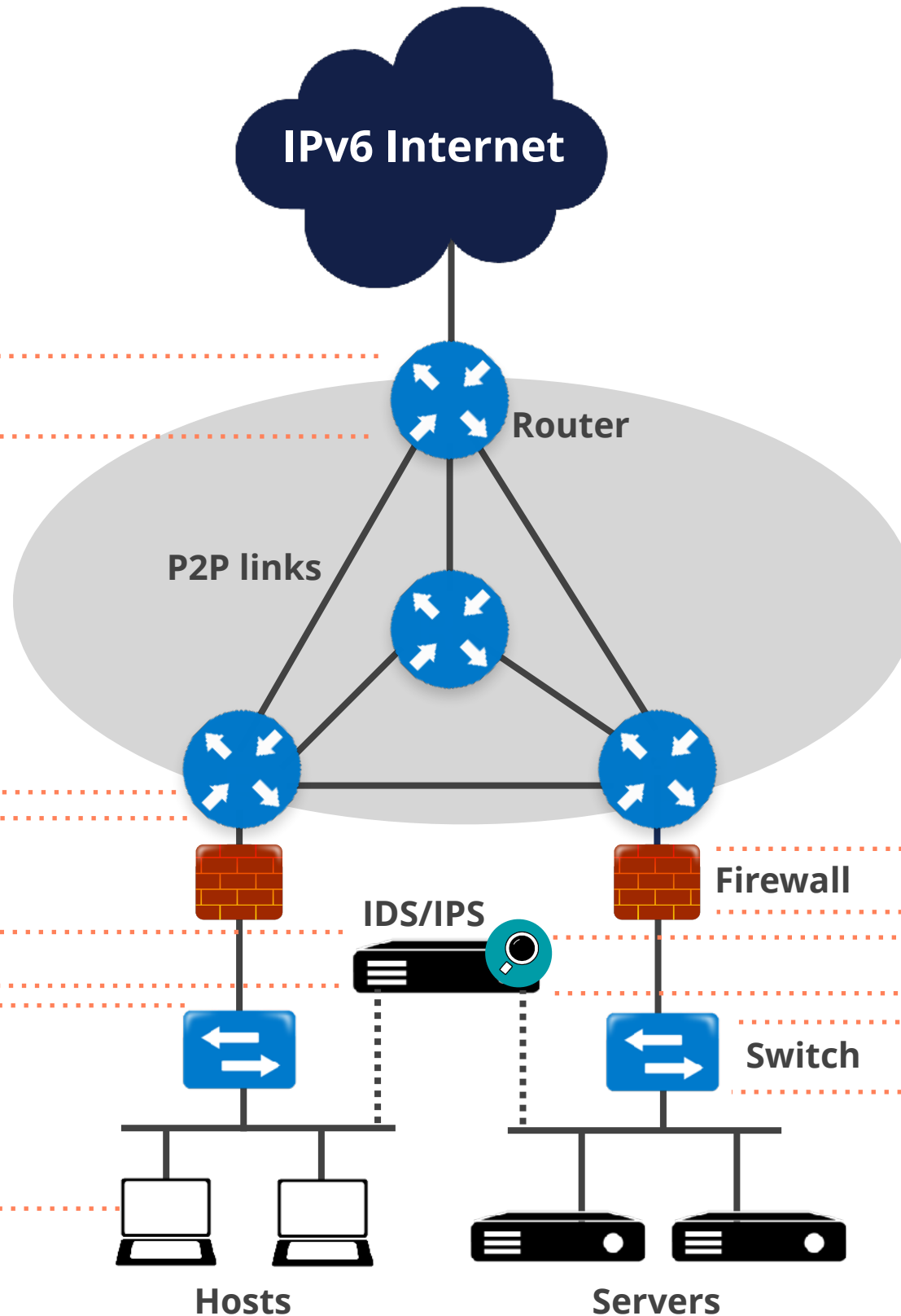
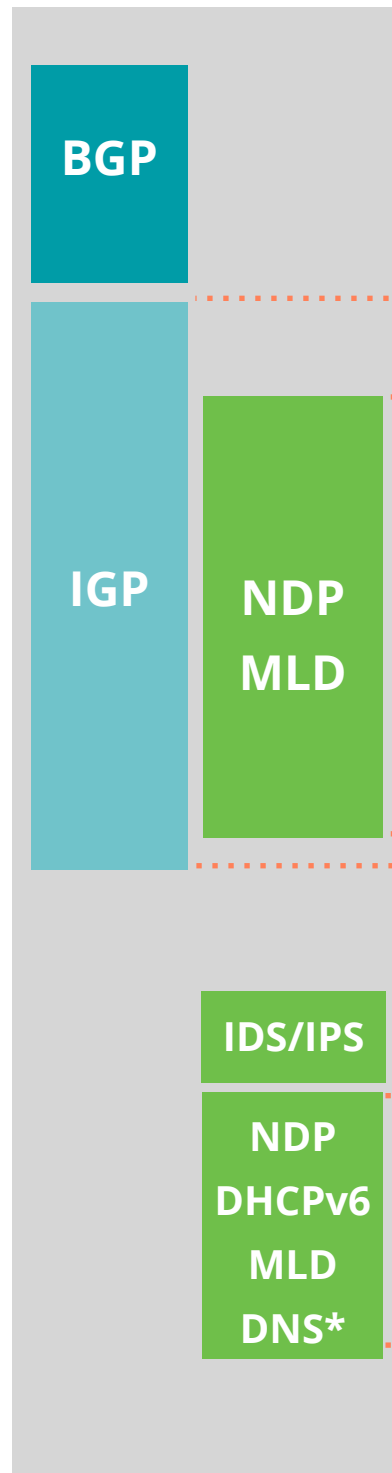


# IPv6 Security Considerations Per Device Type

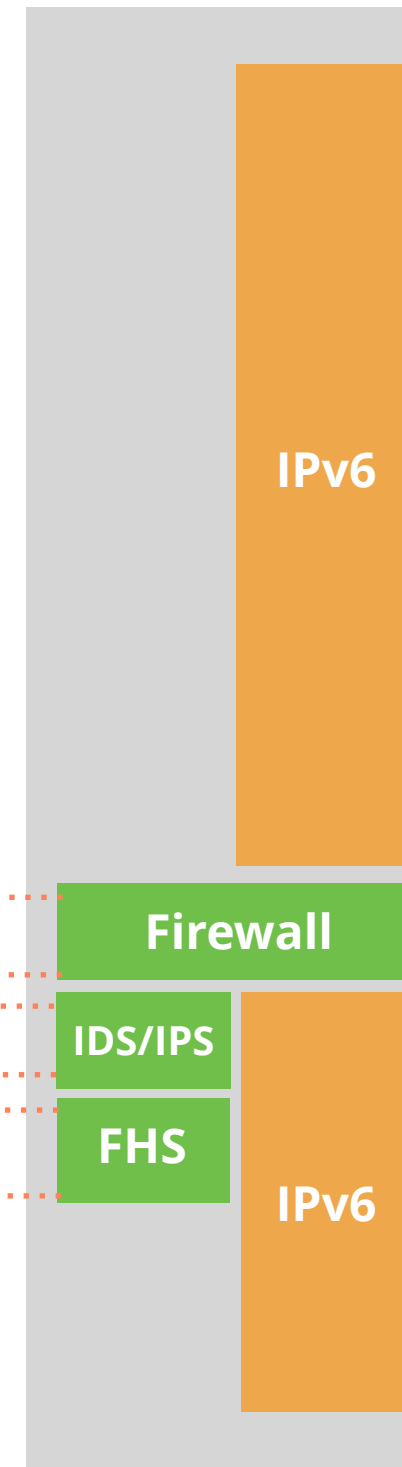
Host	Switch	Router	Security Equipment	CPE
IPSec (if needed)	HOST +	HOST +	HOST +	Router
RH0 [RFC5095]	IPv6 ACLs	Ingress Filtering and RPF	Header chain [RFC7112]	Security Equipment
Overlapping Frags [RFC5722]	<b>FHS</b>	DHCPv6 Relay [RFC8213]	Support EHs Inspection	DHCPv6 Server Privacy Issues
Atomic Fragments [RFC6946]	RA-Guard [RFC6105]	<b>OSPFv3</b>	ICMPv6 fine grained filtering	
NDP Fragmentation [RFC6980]	DHCPv6 guard	Auth. [RFC4552]	Encapsulated Traffic Inspection	
Header chain [RFC7112]	IPv6 snooping	or / and [RFC7166]	IPv6 Traffic Filtering	
Stable IIDs [RFC8064][RFC7217][RFC7136]	IPv6 source / prefix guard	<b>IS-IS</b>		
Temp. Address Extensions [RFC8981]	IPv6 destination guard	[RFC5310]		
<b>Disable if not used:</b> LLMNR, mDNS, DNS-SD, transition mechanisms	MLD snooping [RFC4541]	or, less preferred, [RFC5304]		
	DHCPv6-Shield [RFC7610]	<b>MBGP</b>		
		TCP-AO [RFC5925]		
		Obsoleted MD5 Signature Option [RFC2385]		
		MBGP Bogon prefix filtering		

# IPv6 Security Considerations On Your Network

## Control Plane Security



## Forwarding Plane Security



\* All Name resolution related protocols