

# Technical Services Overview

Andrei Robachevsky  
<*andrei@ripe.net*>  
RIPE NCC



# Outline

- Background and motivation
- Specific services
  - RIPE Database
  - DNS Services
  - Information Services
- Future Plans
- How to participate
- Conclusions



# Traditional view on RIPE NCC services

- Membership services
  - Only available to paying customers
    - Resources (IPv4, IPv6, AS)
    - TTM (Test Traffic Measurements)
    - Training Courses
    - DNSMON
- Community services
  - Available to everybody
    - K root server
    - RIPE database
    - RIS
    - TTM

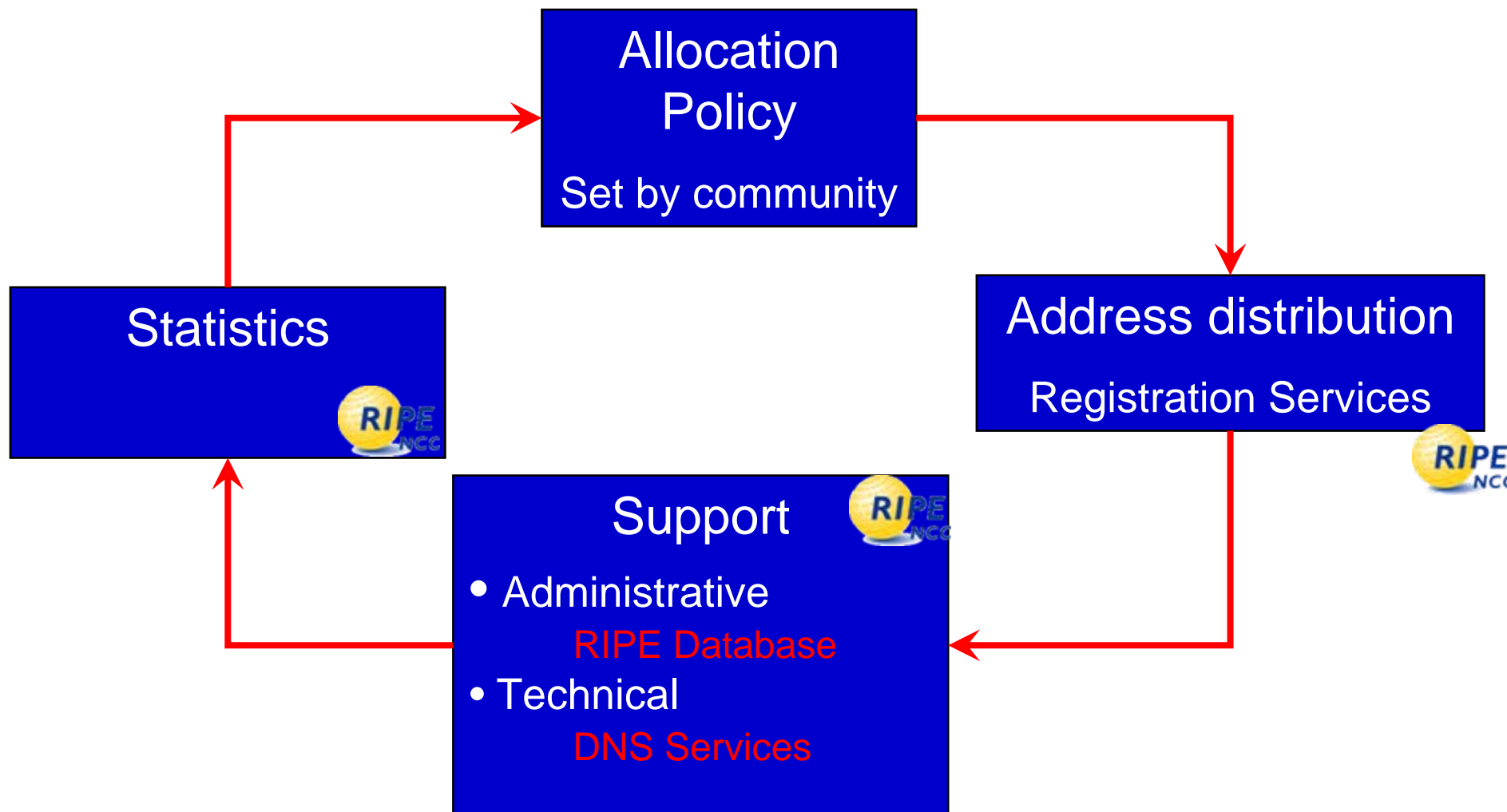


## A different view

- In traditional view services are usually seen as separate
  - Do not form a consistent full picture
  - Services are highly related
  
- The NCC aims to offer a portfolio of related services that benefits its membership
  - Start from Internet resources (IP, AS)
  - Logical connection

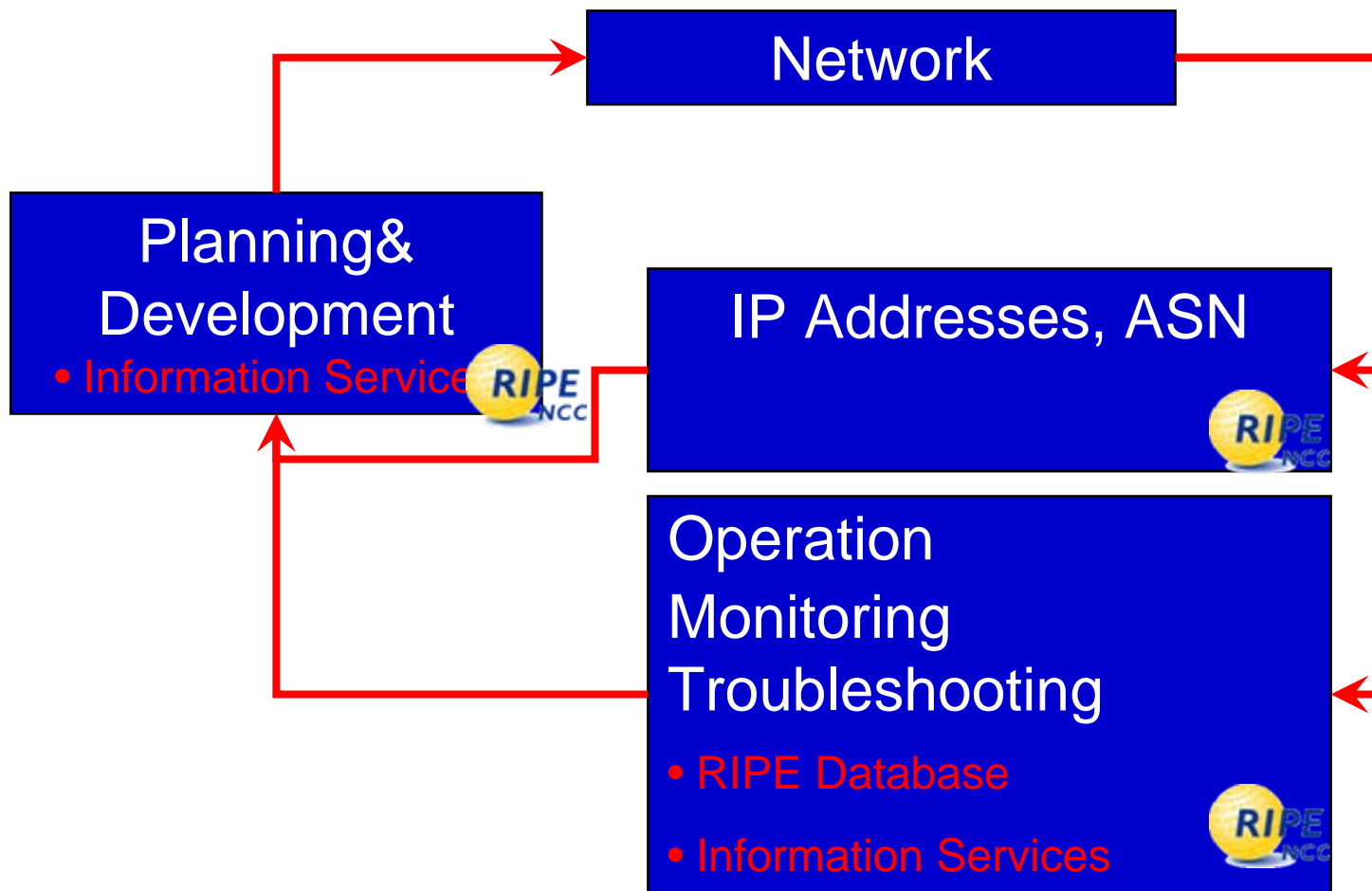


# Example 1: IP address distribution





# Example 2: Network operations





# Overview of Technical Services

- RIPE Database
  - Address and ASN allocation registry
  - DNS provisioning system
  - Internet Routing Registry (IRR)
- DNS Services
  - Reverse delegation
  - Root Server k.root-servers.net
  - ENUM Tier0 (e164.arpa)
- Information Services
  - TTM: DNSMON
  - RIS: MyASn, BGPlay



# Overview of Technical Services

- **RIPE Database**
  - Address and ASN allocation registry
  - DNS provisioning system
  - Internet Routing Registry (IRR)
- **DNS Services**
  - Reverse delegation
  - Root Server k.root-servers.net
  - ENUM Tier0 (e164.arpa)
- **Information Services**
  - TTM: DNSMON
  - RIS: MyASn, BGPlay





# RIPE Database: IRR

- Internet Routing Registry
  - Allows to document routing policy
  - Facilitates router configuration (e.g. IRRToolSet)
- Routing Registry Security
  - Implemented as per RFC 2725
  - Object creation is authorised by address and ASN holders
  - Only secure for address space AND ASN allocated by RIPE NCC
- Usage
  - 65K routes coming from 10K AS



# DNS Services: k.root-servers.net

- Operated by the RIPE NCC since May 1997
  - First instance installed in London (LINX)
- Using NSD software from February 2003
  - Increased performance and software diversity
- Anycast since 2003
  - Two global instances in London and Amsterdam
- Wider deployment of anycast (from 2004)
  - 5 global and 12 local nodes

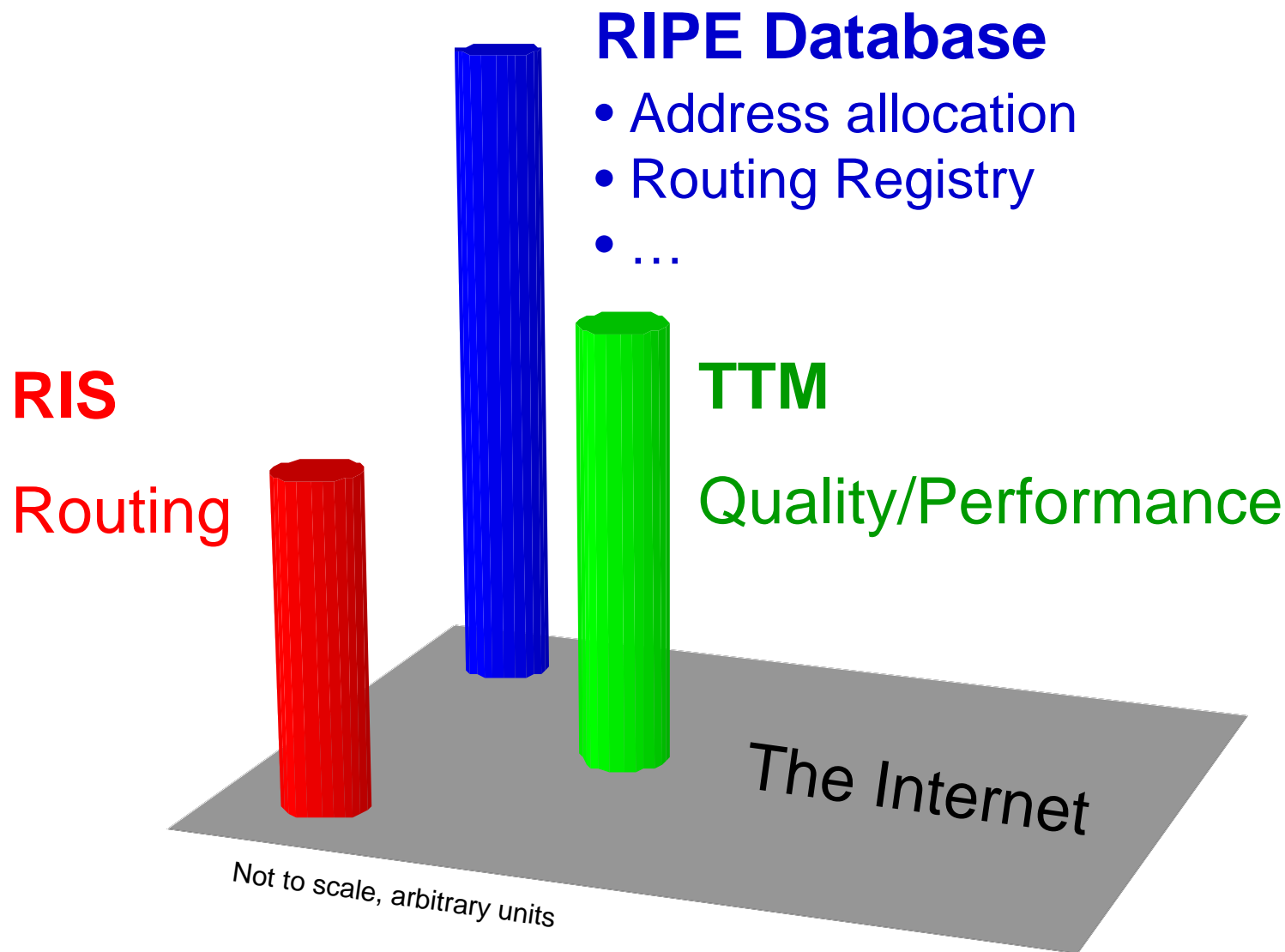


# Information Services (IS)

- Information Services
  - Major Components
  - Concept
  - TTM: DNSMON
  - RIS: MyASn, BGPlay

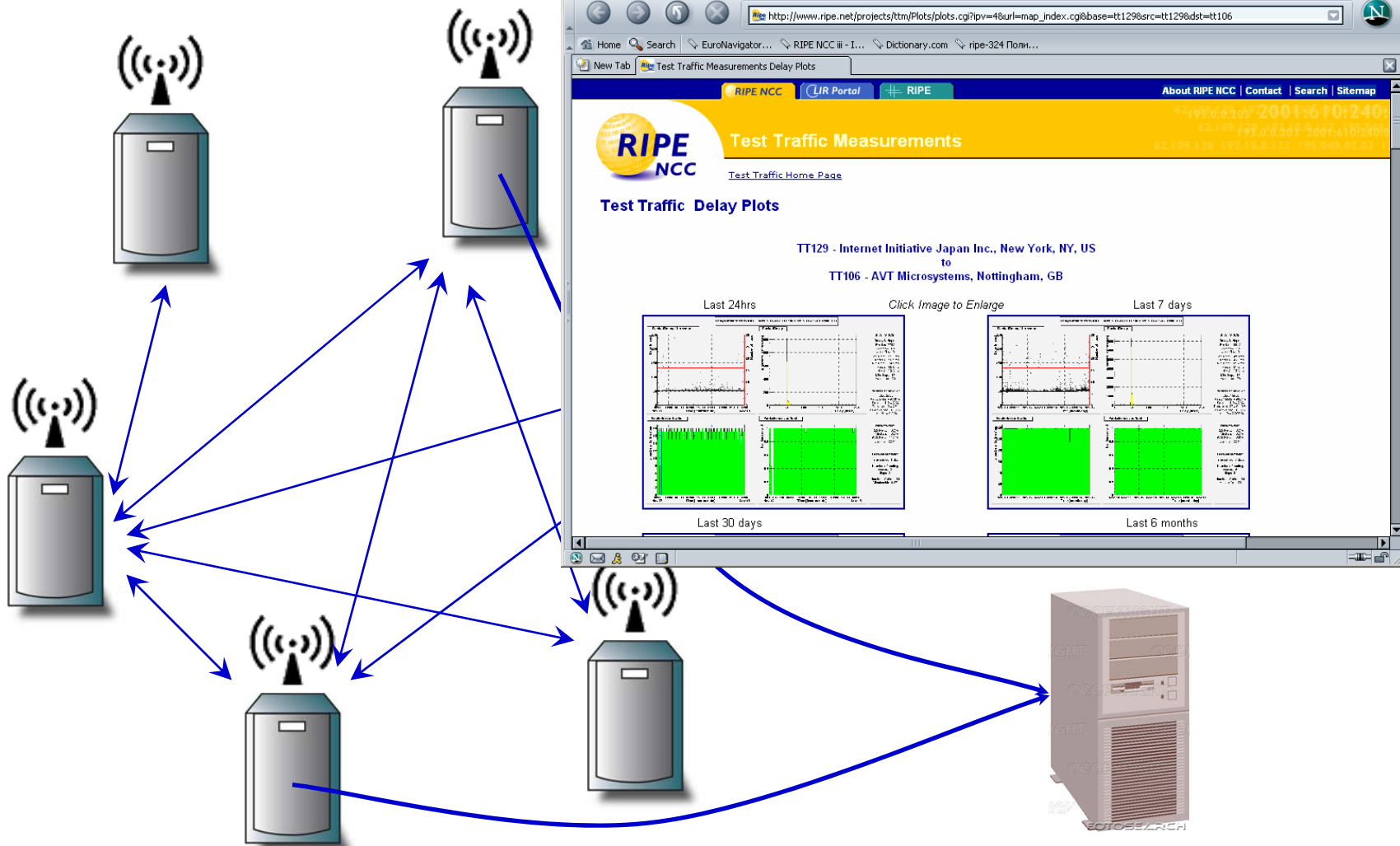


# Data Collection Components





# TTM Architecture





# Distributed Platform

210° 240° 270° 300° 330° 0° 30° 60° 90° 120° 150° 180°

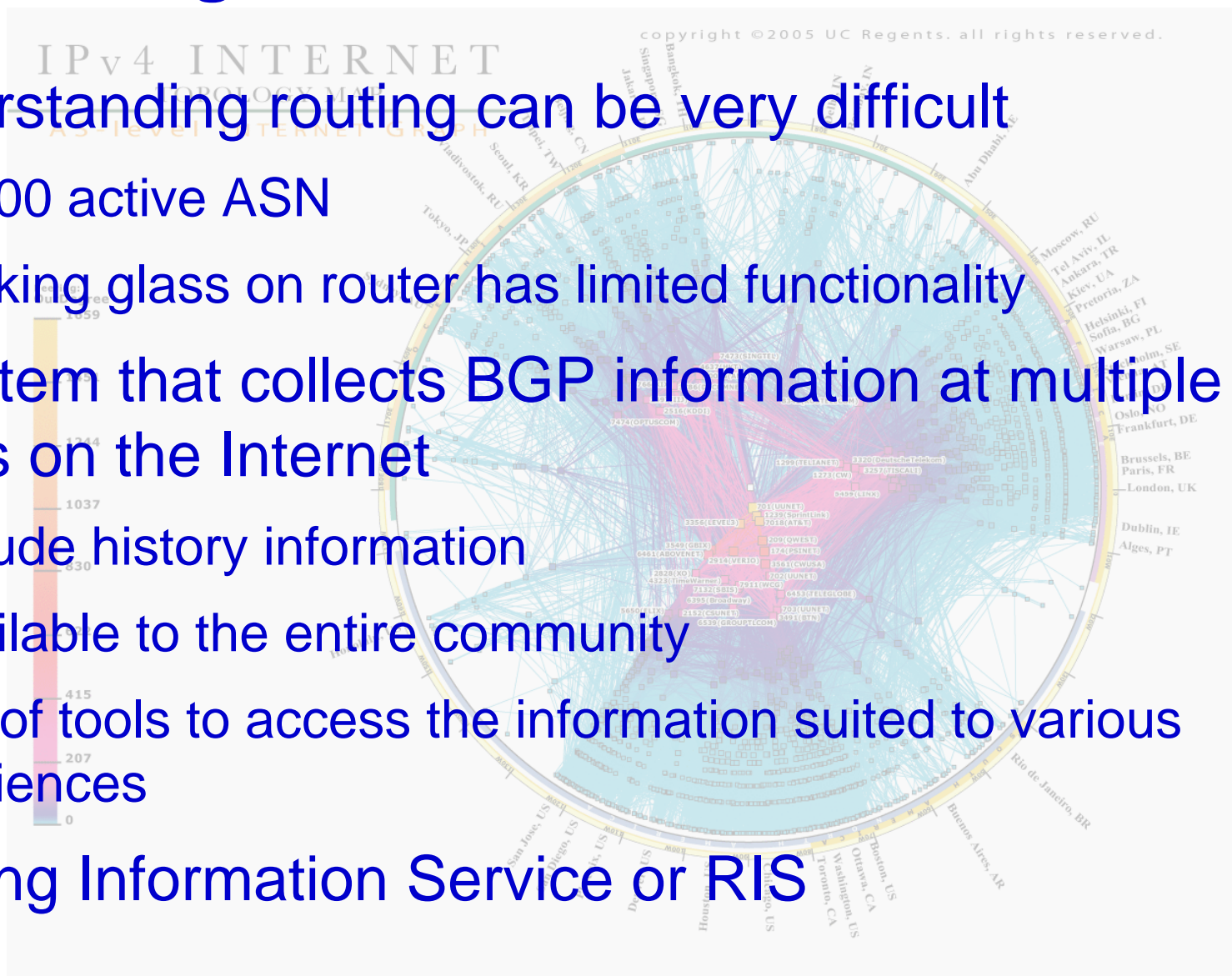


210° 240° 270° 300° 330° 0° 30° 60° 90° 120° 150° 180°



# Routing Information Service

- Understanding routing can be very difficult
  - 20000 active ASN
  - Looking glass on router has limited functionality
- A system that collects BGP information at multiple points on the Internet
  - Include history information
  - Available to the entire community
  - Set of tools to access the information suited to various audiences
- Routing Information Service or RIS



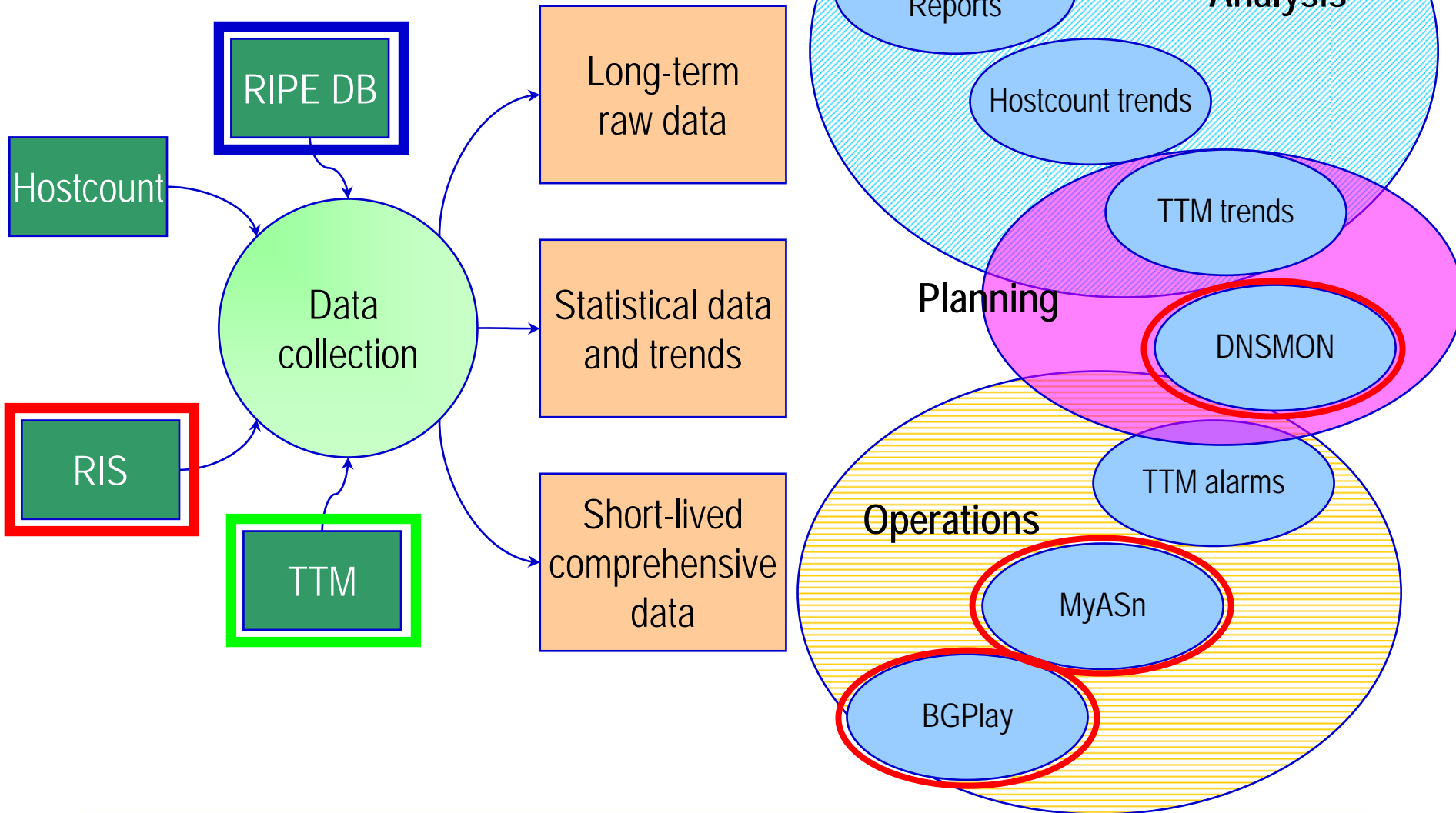


# RIIS Collectors

- Data collection:
    - 14 collection points
    - >600 peering sessions in total, v4 and v6
  - Data that is being collected:
    - RIB: 3 times a day
    - All BGP updates
  - Storage:
    - MySQL DB for 3 months
    - Raw data
- LINX, London, UK
  - SFINX, Paris, FR
  - AMS-IX, Amsterdam, NL
  - CIXP, Geneva, CH
  - VIX, Vienna, AT
  - NSPIXP2, Othemachi, JP
  - NETNOD, Stockholm, SE
  - MIX, Milan, IT
  - NYIIX, New York, USA
  - DECIX, Frankfurt, DE
  - MSK-IX, Moscow, RU
  - PAIX, Palo Alto, USA
  - PTTMetro-SP, São Paulo, BR
  - RIPE NCC, Amsterdam, NL



# Information Services: Concept





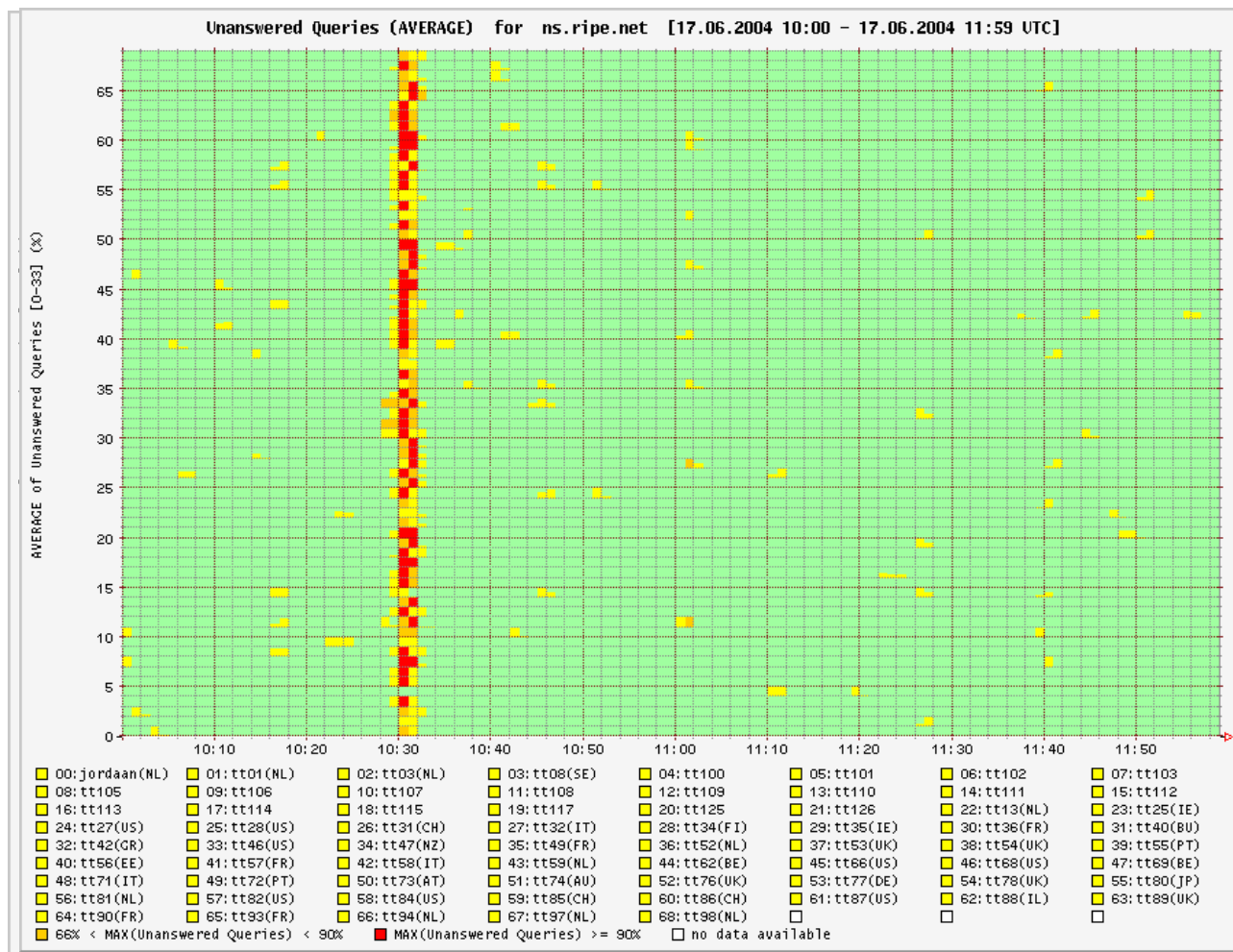
# DNSSMON: DNS Monitoring

- DNS service is important
  - QoS for root and ccTLD zones
- Measure composite performance
  - From multiple points in the Internet, based on TTM
  - Real DNS traffic
  - Servers + Network
- Interactive with graphical user interface
  - Stacked plots allow people to easily see trends
  - Plots on demand



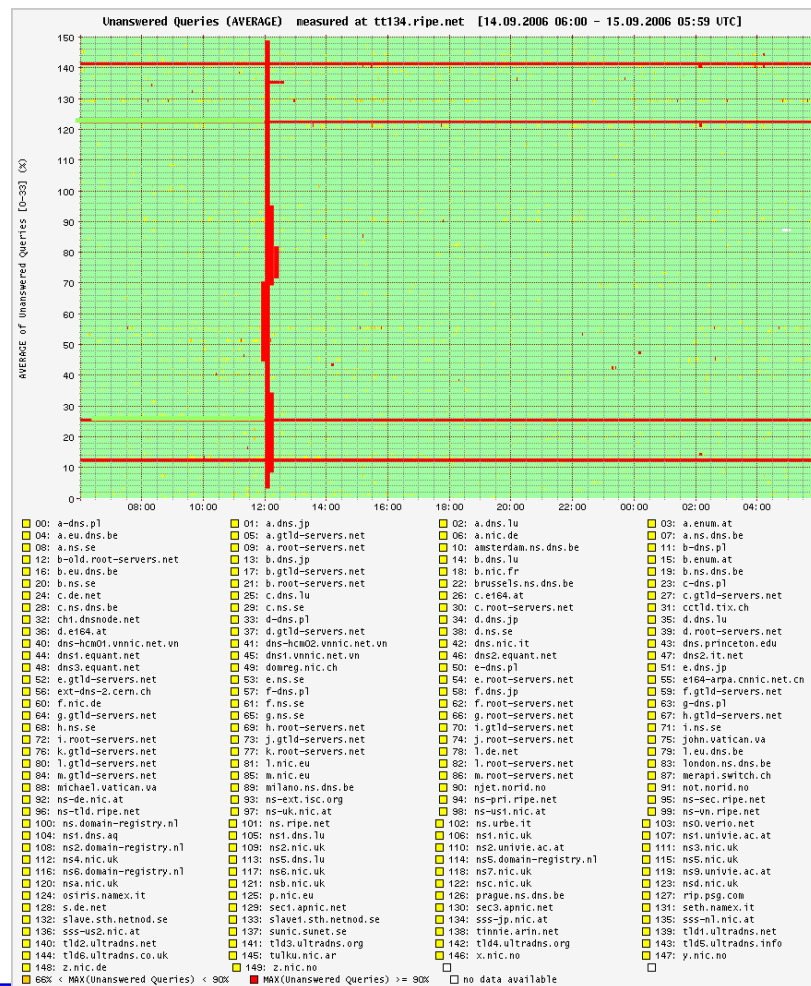
# Composite measurement: DNS Server Quality

TT-box (~70)



# Composite Measurement: Connectivity Quality

DNS server (~150)





# RIS Applications

- MyASN
  - Allows to monitor BGP events related to an AS
  - Alarms: Origin, Customer, Transit, Advanced
  - Triggers and thresholds to generate notifications
  
- BGPlay
  - Animated graph of routing activity over time
  - Prefix to monitor and data sources



# Why should the NCC do this?

- Activity that benefits the entire community
  - The NCC was set up to do that
  - Connected to our registration services
- Neutral & Impartial
  - No commercial bias
  - Results that reflect reality
- Access to networks operated by others

# Future Plans

- Composite measurements of service quality
  - Measure network from service perspective
  - DNSMON-like service for other protocols
- Global platform for one-way measurements
  - Measurements on demand
  - In real time, based on the OWAMP
- More useful and simpler services
  - Ready to use tools with good user interface
  - Solve real problems
  - Examples: MyASn, BGPlay



# How to Participate?

- Just use it
  - [www.ripe.net/ttm](http://www.ripe.net/ttm)
  - [www.ripe.net/ris](http://www.ripe.net/ris)
  - [dnsmon.ripe.net](http://dnsmon.ripe.net)
- Active Measurements
  - TTM:
    - Buy and install a probe
    - RIPE 297 explains the details
  - DNSMON
    - TTM service is free
    - TLD operators: RIPE 342 explains all details
- RIS:
  - Set up a peering session at any of our locations
  - Contact [rispeering@ripe.net](mailto:rispeering@ripe.net)





# URL's, email

- RIPE Database
  - <http://www.ripe.net/db/>
  - [ripe-dbm@ripe.net](mailto:ripe-dbm@ripe.net): support @ NCC
  - [db-wg@ripe.net](mailto:db-wg@ripe.net) : RIPE Working Group
- DNS
  - <http://www.ripe.net/rs/reverse/>
  - [ripe-dbm@ripe.net](mailto:ripe-dbm@ripe.net) : support @ NCC
  - [dns-wg@ripe.net](mailto:dns-wg@ripe.net) : RIPE working group



# URL's, email

- TTM
  - <http://www.ripe.net/ttm>
  - [ttm@ripe.net](mailto:ttm@ripe.net): support @ NCC
  - [tt-wg@ripe.net](mailto:tt-wg@ripe.net): RIPE Working Group
- DNSMON:
  - <http://dnsmon.ripe.net>
  - [dnsmon@ripe.net](mailto:dnsmon@ripe.net): support @ NCC
- RIS
  - <http://www.ripe.net/ris>
  - [ris@ripe.net](mailto:ris@ripe.net): support @ NCC
  - [routing-wg@ripe.net](mailto:routing-wg@ripe.net): RIPE Working Group



# Questions?