



RIPE NCC
RIPE NETWORK COORDINATION CENTRE



BANGKOK, THAILAND
21 February – 1 March 2024
#apricot2024

สวัสดี



Lia Hestina
Senior Project Coordinator
RIPE NCC



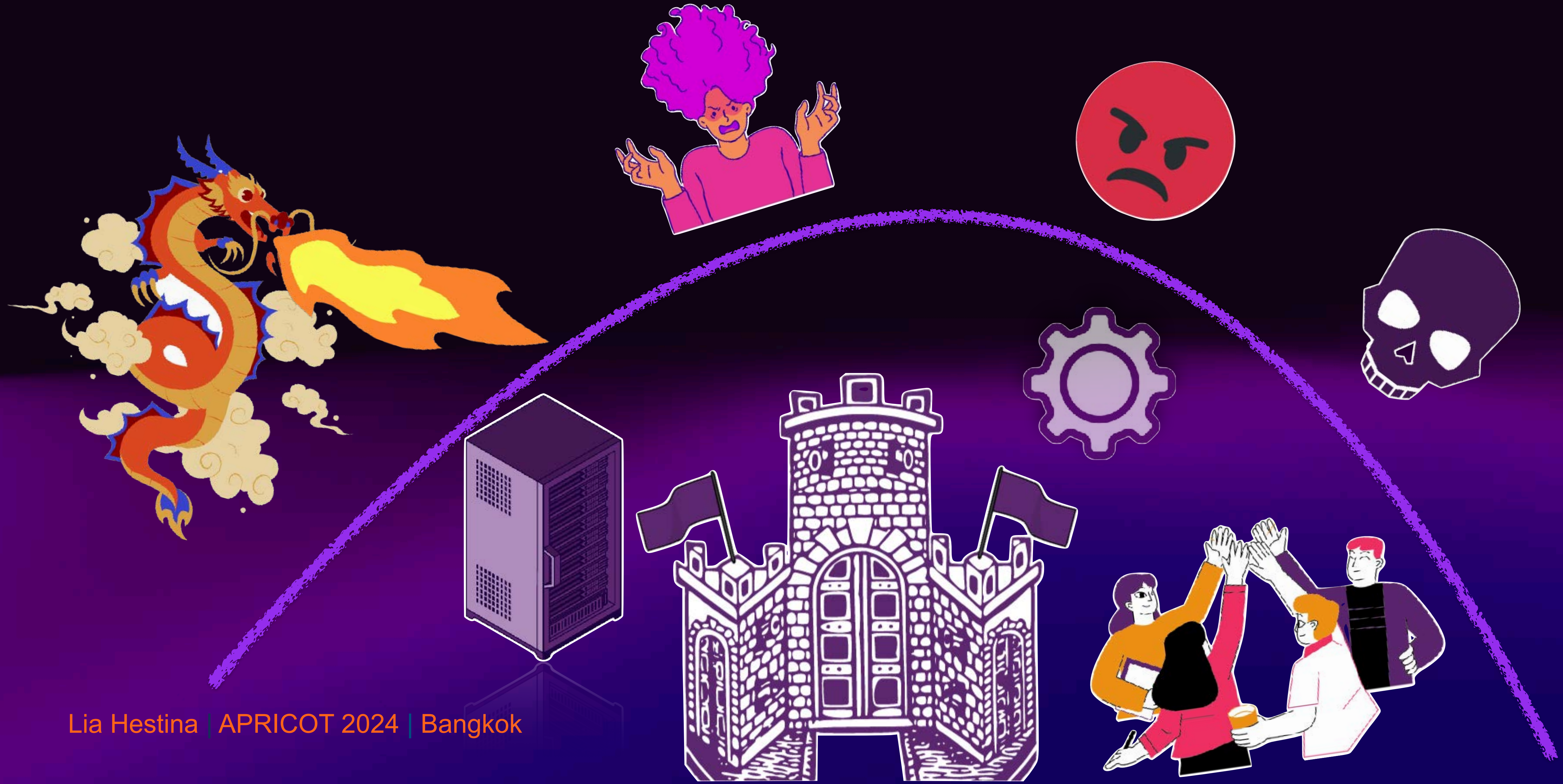
RIPE NCC
RIPE NETWORK COORDINATION CENTRE

Minimising Impact

Before Incidents Occur with RIPE Atlas and RIS

Lia Hestina | APRICOT 2024 | Bangkok

The world outside is pretty dark...



How do you minimise the impact?



Escape



Gear up



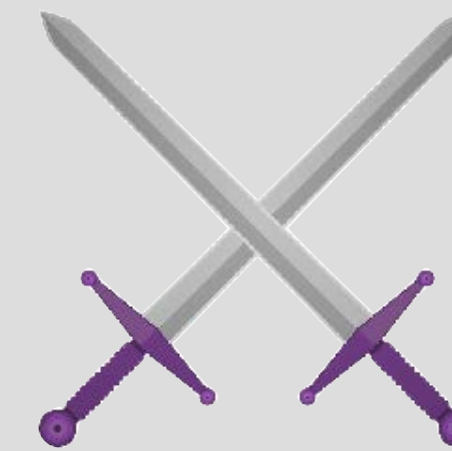
Action

How do you minimise impact?



Gear up

- **Strategic Deployment:**
 - Install **RIPE Atlas** probes & anchor strategically
 - Peer with **RIS** (Routing Information Services)
- **Continuous Monitoring:** Conduct ongoing measurements
- **Abnormality Alerts:**
 - Set up alerts for deviations from normal measurements
 - Detect route hijacks



Action

- **Anomaly Detection:** Identify network issues swiftly.
- **Latency Assurance:** Debug and maintain low latency.
- **Performance Showcase:** Impress customers with network performance

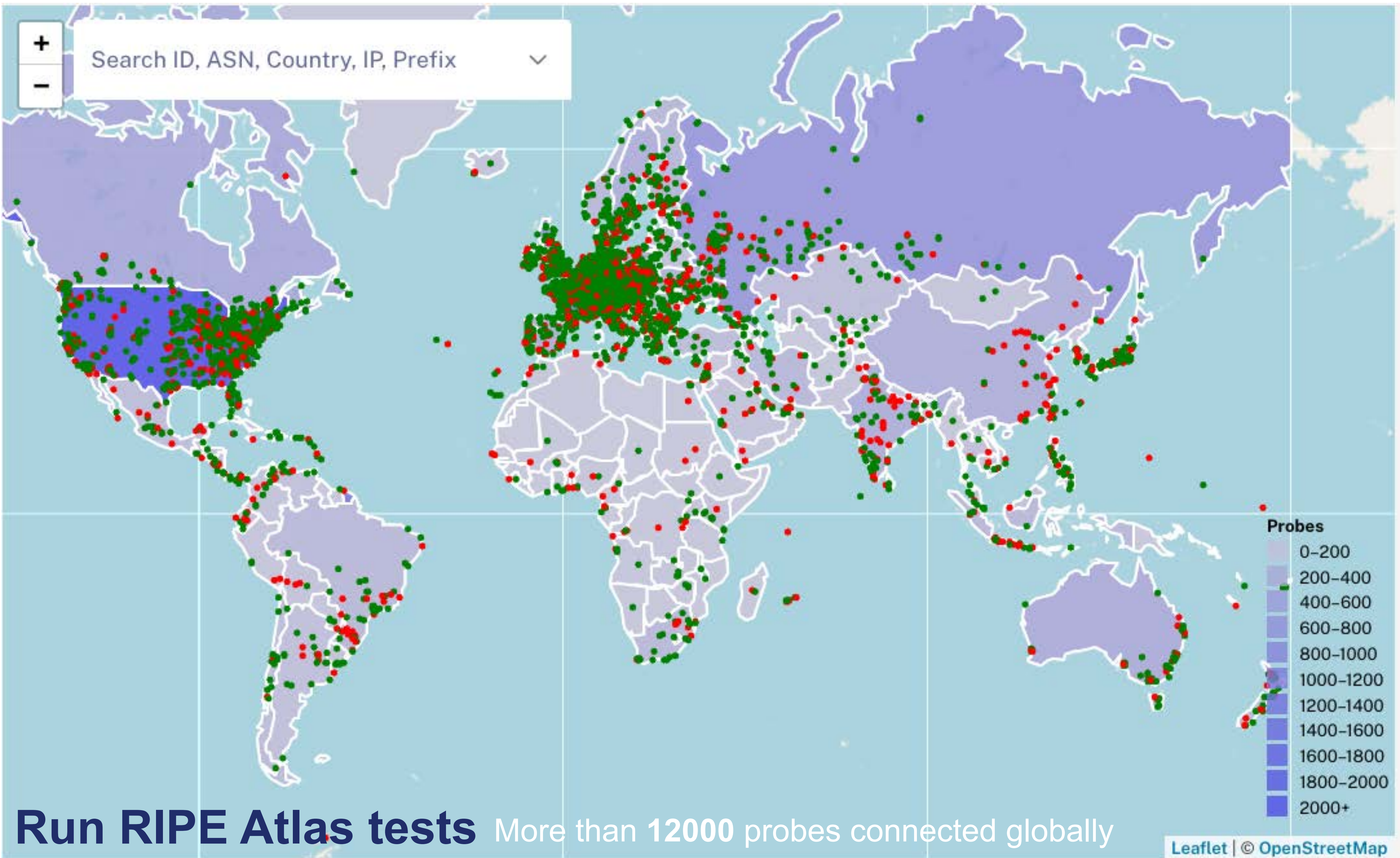


RIPE Atlas

- RIPE Atlas is a global active measurements platform, funded by RIPE NCC members and sponsors
- The goal: To view your Internet reachability from outside your network
- Probes hosted by volunteers, using a credits system
- Data is publicly available

atlas.ripe.net





Run RIPE Atlas tests More than 12000 probes connected globally



Accessible via

GUI

API

CLI TOOL

Types of measurements

PING

TRACEROUTE

DNS

NTP

SSL/TLS

HTTP (anchors)



Security and Privacy

Probes

- Trust Material (regular server address, keys)
- NO open Ports; initiate connection; NAT is OK
- Don't listen to local traffic
- No snooping

Measurements

- No passive measurements
- SSH connections from probe to server
- Initiated by Probes
- Code of measurements publicly available



Types of Probes



Hardware



Software



| | Hardware | Software |
|--------------|-----------------|--------------------------------------|
| Installation | Physical Device | Software base, user machine or VMs |
| Uptime | 24/7 | Same as the device it's installed on |
| Measurements | Same | Same |

What is RIS?

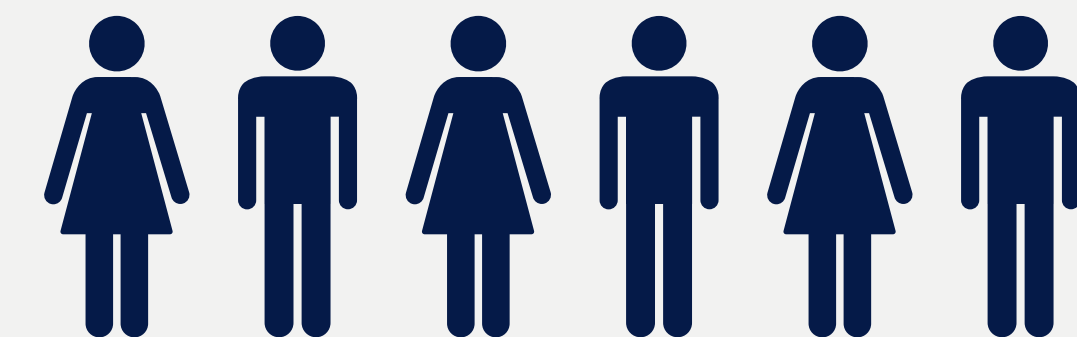


- RIS is a routing data collection platform
- Collecting BGP data since 1999
- Up-to-date routing information, as opposed to information in databases and routing registries, such as:
 - What is being announced
 - Which prefixes are seen and where
 - Which prefixes are not seen

THANK YOU TO OUR COMMUNITY



23 collectors



1377 global peers

How can RIS help network operators?

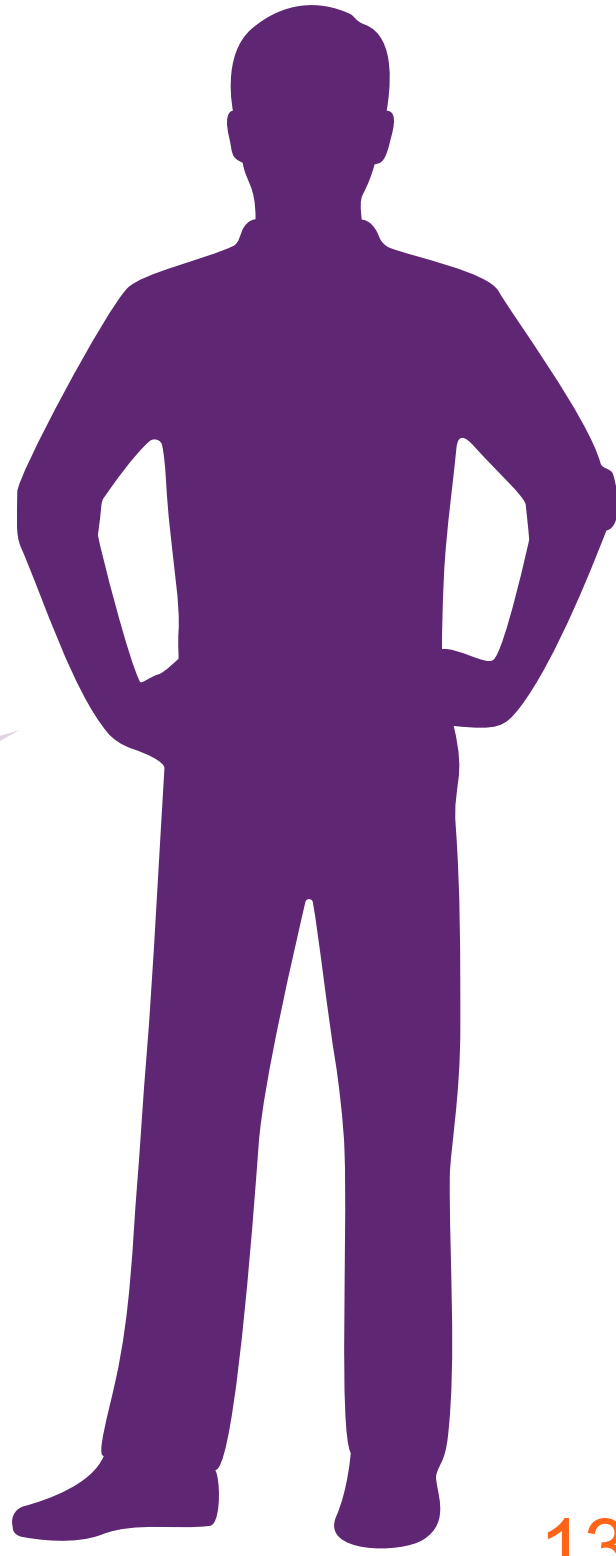


- Is your prefix getting announced?
 - RIS Live (<https://ris-live.ripe.net/>)
 - RIPEstat (Inforedes)
- Tools developed by others allow you to set an alert
 - Try out **BGP Alerter** (powered by RIS Live)
 - PacketVis <https://packetvis.com/>



Some Problems

- High latency = impatient gamers
- Gamers from different networks
- Realtime application, unpredictable



Kunang
Online gaming company
Runs own LAN
Users from around the world

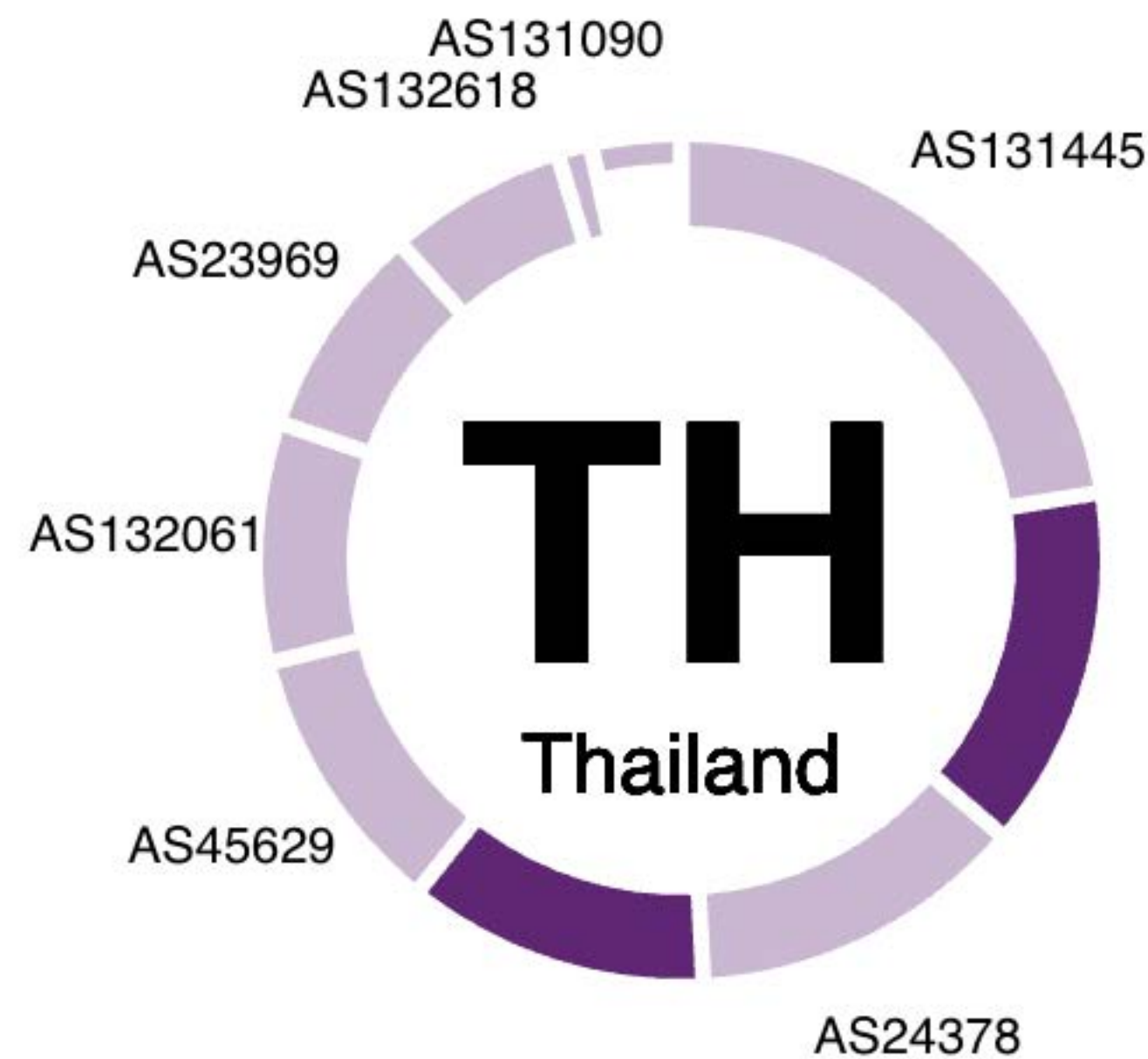
1. Strategic Deployment: Install RIPE Atlas (software)



RIPE Atlas probe coverage

Showing ASNs covering at least 1% of the country's population (2024-02-07)

- ASN is not covered
- ASN has at least 3 probes



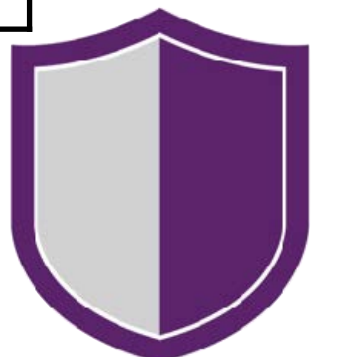
| ASN | Name |
|--------|----------------------|
| 131445 | 3AIS3G-2100-AS-AP |
| 17552 | TRUEONLINE-AS-AP |
| 133481 | AIS-Fibre-AS-AP |
| 45629 | JASTEL-NETWORK-TH-AP |
| 24378 | ENGTAC-AS-TH-AP |
| 132061 | Realmove-as-ap |
| 23969 | TOT-NET |
| 132618 | REALFUTURE-AS-AP |



1. Strategic Deployment: Peer with RIS



| | |
|----------------------------------|--|
| ASN | 12654 |
| Traffic profile | mostly balanced |
| Traffic Volume | 0-20Mbps |
| Peering Policy | Selective |
| Peering Locations (IX or POP) | RRCs at 23 locations globally: https://www.ripe.net/analyse/internet-measurements/routing-information-service-ris/ris-peering-policy |
| PeeringDB entry | as12654.peeringdb.com |
| Contact information | ris-peering@ripe.net Michela Galante: mgalante@ripe.net Marco Giuliani: mgiuliani@ripe.net Jelena Cosic: jcosic@ripe.net |



2. Monitor your network performance



| Probe | ASN (IPv4) | ASN (IPv6) | Time (UTC) | RTT | Hops | Success |
|-------|------------|------------|------------------|---------|------|---------|
| 4429 | 55430 | | 2020-05-13 19:02 | 270.039 | 17 | ✗ |
| 14042 | 55430 | | 2020-05-13 19:02 | 267.779 | 17 | ✗ |
| 22798 | 55430 | 55430 | 2020-05-13 19:02 | 268.372 | 17 | ✗ |
| 24422 | 55430 | | 2020-05-13 19:02 | 268.974 | 17 | ✗ |
| 25828 | 4788 | | 2020-05-13 19:02 | 364.127 | 15 | ✗ |
| 28850 | 4844 | | 2020-05-13 19:02 | 265.993 | 17 | ✗ |
| 54623 | 4773 | 4773 | 2020-05-13 19:02 | 268.964 | 16 | ✗ |
| 55415 | 55430 | 55430 | 2020-05-13 19:02 | 367.158 | 13 | ✗ |

High latency Identified

Latest Traceroute Result for Measurement #59170999

2023-09-01 16:17 UTC

Traceroute to tiktok.com (3.160.5.56), 48 byte packets

- 192.168.0.1 0.457ms 0.368ms 0.346ms
- 100.91.127.254 5.424ms 4.347ms 4.594ms
- 10.233.97.55 4.777ms 4.537ms 4.473ms
- 10.55.192.63 193.346ms 194.974ms 194.312ms
- 213.248.79.106 lax-b3-link.ip.twelve99.net AS1299 182.594ms 182.382ms 182.325ms
- 62.115.126.250 lax-b23-link.ip.twelve99.net AS1299 202.572ms 203.672ms 203.016ms
- * 62.115.123.136 dis-bb2-link.ip.twelve99.net AS1299 232.324ms *
- 62.115.116.213 atl-b24-link.ip.twelve99.net AS1299 255.674ms 250.639ms 250.838ms
- 62.115.119.201 ipis-b2-link.ip.twelve99.net AS1299 255.624ms 255.207ms 255.525ms
- 62.115.139.235 clb-b1-link.ip.twelve99.net AS1299 260.81ms 260.133ms 259.797ms
- ***
- ***
- ***
- ***
- ***
- 3.160.5.56 server-3-160-5-56.cmh68.r.cloudfront.net AS16509 243.323ms 242.473ms

243.412ms

Talk to your peers, ISP or any that can help improve RTT

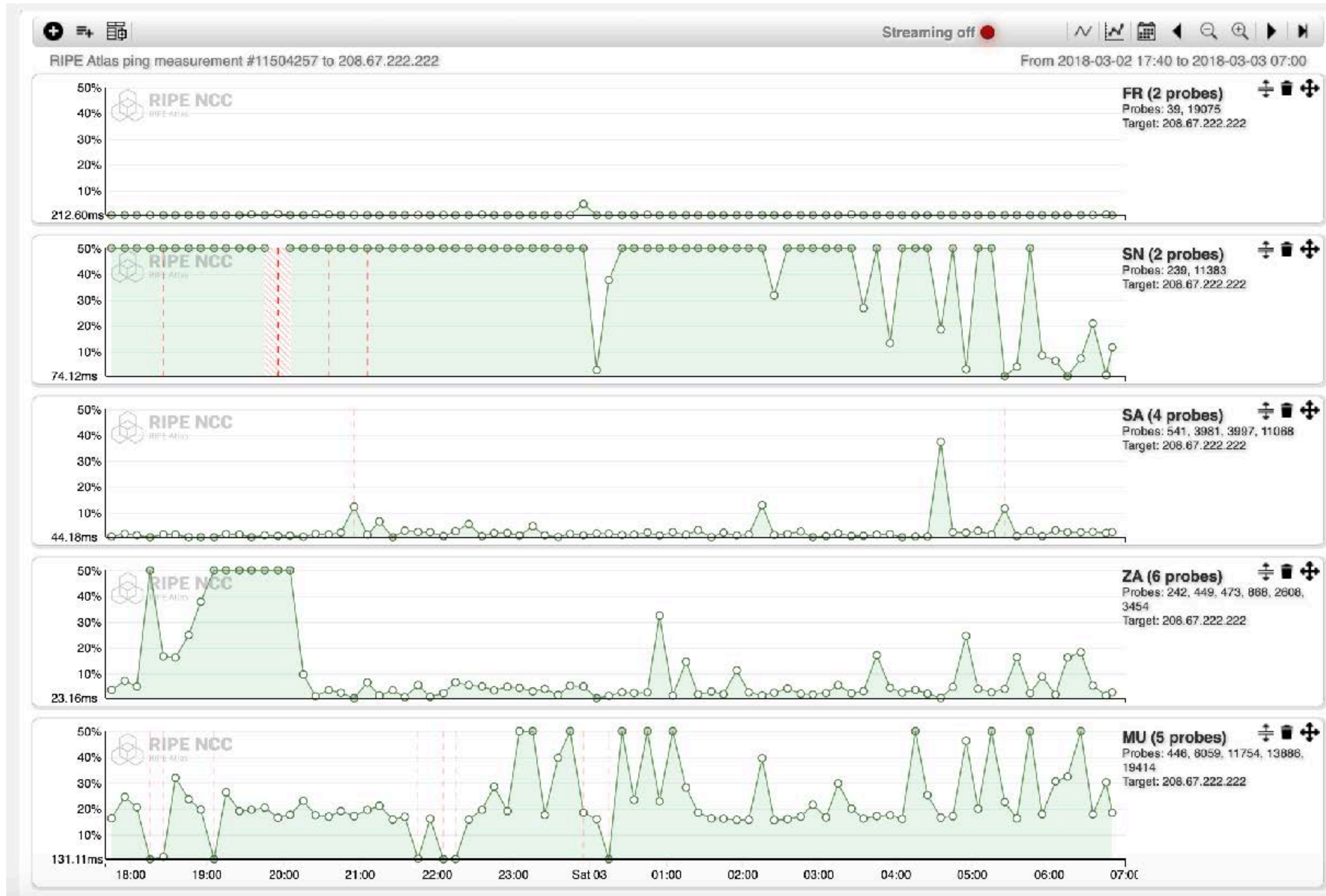
Settings & Status Latest Results Map Tracemon IPMap Downloads

| Probe | ASN (IPv4) | ASN (IPv6) | Time (UTC) | RTT | Hops | Success |
|-------|------------|------------|------------------|-------|------|---------|
| 4429 | 55430 | | 2020-05-13 20:17 | 4.584 | 14 | ✓ |
| 14042 | 55430 | | 2020-05-13 20:17 | 3.042 | 14 | ✓ |
| 22798 | 55430 | 55430 | 2020-05-13 20:17 | 3.336 | 14 | ✓ |
| 24422 | 55430 | | 2020-05-13 20:17 | 3.993 | 15 | ✓ |
| 25828 | 4788 | | 2020-05-13 20:17 | 3.158 | 14 | ✓ |
| 28850 | 4844 | | 2020-05-13 20:17 | 3.127 | 14 | ✓ |
| 31918 | 55430 | | 2020-05-13 20:17 | 5.194 | 15 | ✓ |
| 54623 | 4773 | 4773 | 2020-05-13 20:17 | 4.505 | 14 | ✓ |
| 55415 | 55430 | 55430 | 2020-05-13 20:17 | 3.508 | 14 | ✓ |

Lower latency after debugging



3. Set up alerts for any abnormal results





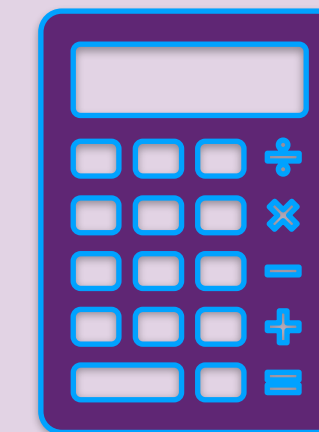
Action

- **Anomaly Detection:** Identify network issues swiftly.
- **Latency Assurance:** Debug and maintain low latency.
- **Performance Showcase:** Impress customers with network performance

For your clients

Improve Performance

Shorter path is selected, better latency, reliability & security



For YOU

Control & Flexibility

Repeat tests as much as you need!

For your staff

Service desks



RIPE Atlas GUI

To validate findings





A view into
Thailand and South East Asia

Probes in South East Asia

| Country Code | Probe | Anchor |
|--------------|-------|--------|
| BN | 3 | |
| MM | 2 | |
| KH | 2 | 1 |
| TL | 1 | |
| ID | 92 | 12 |
| LA | 1 | |
| MY | 27 | 3 |
| PH | 54 | 4 |
| SG | 129 | 29 |
| TH | 29 | 2 |
| VN | 8 | 1 |



Measurements in 2023 with Thai probes



Search Measurements
thailand



All Built-In Anchoring

| ID | Type All | IPv4/v6 All | Target | Description | Probes | Interval All | Time (UTC) | Status All |
|--------------------------|-------------|----------------|---------------------------------|--|--------|-----------------|--------------------|---------------|
| 63898041 | ping | 4 | pull-flv-l10-va01.tiktokcdn.com | Ping test from Thailand to pull-flv-l10-va01.tiktokcdn.com | 6 | one-off | ▶ 2023-11-21 13:42 | ⊕ |
| 63898035 | ping | 4 | pull-f5-va01.tiktokcdn.com | Ping test from Thailand to pull-f5-va01.tiktokcdn.com | 6 | one-off | ▶ 2023-11-21 13:41 | ⊕ |
| 63898030 | ping | 4 | pull-flv-l1-va01.tiktokcdn.com | Ping test from Thailand to pull-flv-l1-va01.tiktokcdn.com | 6 | one-off | ▶ 2023-11-21 13:41 | ⊕ |
| 63898026 | ping | 4 | pull-flv-l11-va01.tiktokcdn.com | Ping test from Thailand to pull-flv-l11-va01.tiktokcdn.com | 6 | one-off | ▶ 2023-11-21 13:41 | ⊕ |
| 63898021 | ping | 4 | 43.132.86.2 | Ping test from Thailand to 43.132.86.2 | 6 | one-off | ▶ 2023-11-21 13:41 | ⊕ |
| 63896837 | ping | 4 | pull-flv-l10-va01.tiktokcdn.com | Ping test from Thailand to pull-flv-l10-va01.tiktokcdn.com | 6 | one-off | ▶ 2023-11-21 12:42 | ⊕ |
| 63896833 | ping | 4 | pull-f5-va01.tiktokcdn.com | Ping test from Thailand to pull-f5-va01.tiktokcdn.com | 6 | one-off | ▶ 2023-11-21 12:41 | ⊕ |
| 63896828 | ping | 4 | pull-flv-l1-va01.tiktokcdn.com | Ping test from Thailand to pull-flv-l1-va01.tiktokcdn.com | 6 | one-off | ▶ 2023-11-21 12:41 | ⊕ |
| 63896822 | ping | 4 | pull-flv-l11-va01.tiktokcdn.com | Ping test from Thailand to pull-flv-l11-va01.tiktokcdn.com | 6 | one-off | ▶ 2023-11-21 12:41 | ⊕ |
| 63896819 | ping | 4 | 43.132.86.2 | Ping test from Thailand to 43.132.86.2 | 6 | one-off | ▶ 2023-11-21 12:40 | ⊕ |
| 63895647 | ping | 4 | pull-flv-l10-va01.tiktokcdn.com | Ping test from Thailand to pull-flv-l10-va01.tiktokcdn.com | 6 | one-off | ▶ 2023-11-21 11:42 | ⊕ |

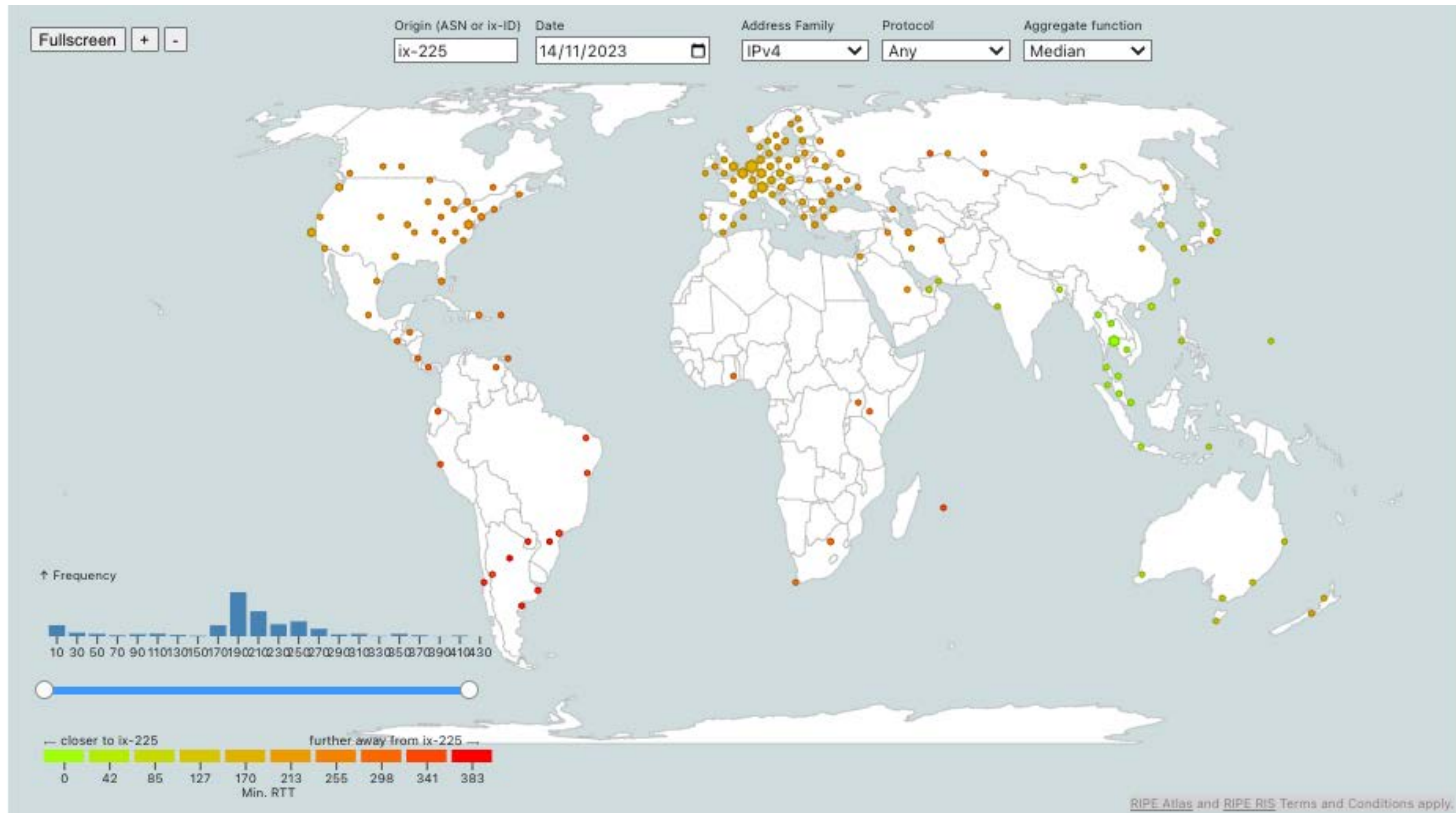
638,089 UDMs
350,951 created by IPmap



Tools for **Network Operators** (Prototype)

MinRTT

Latency IX-225 Thailand



MinRTT

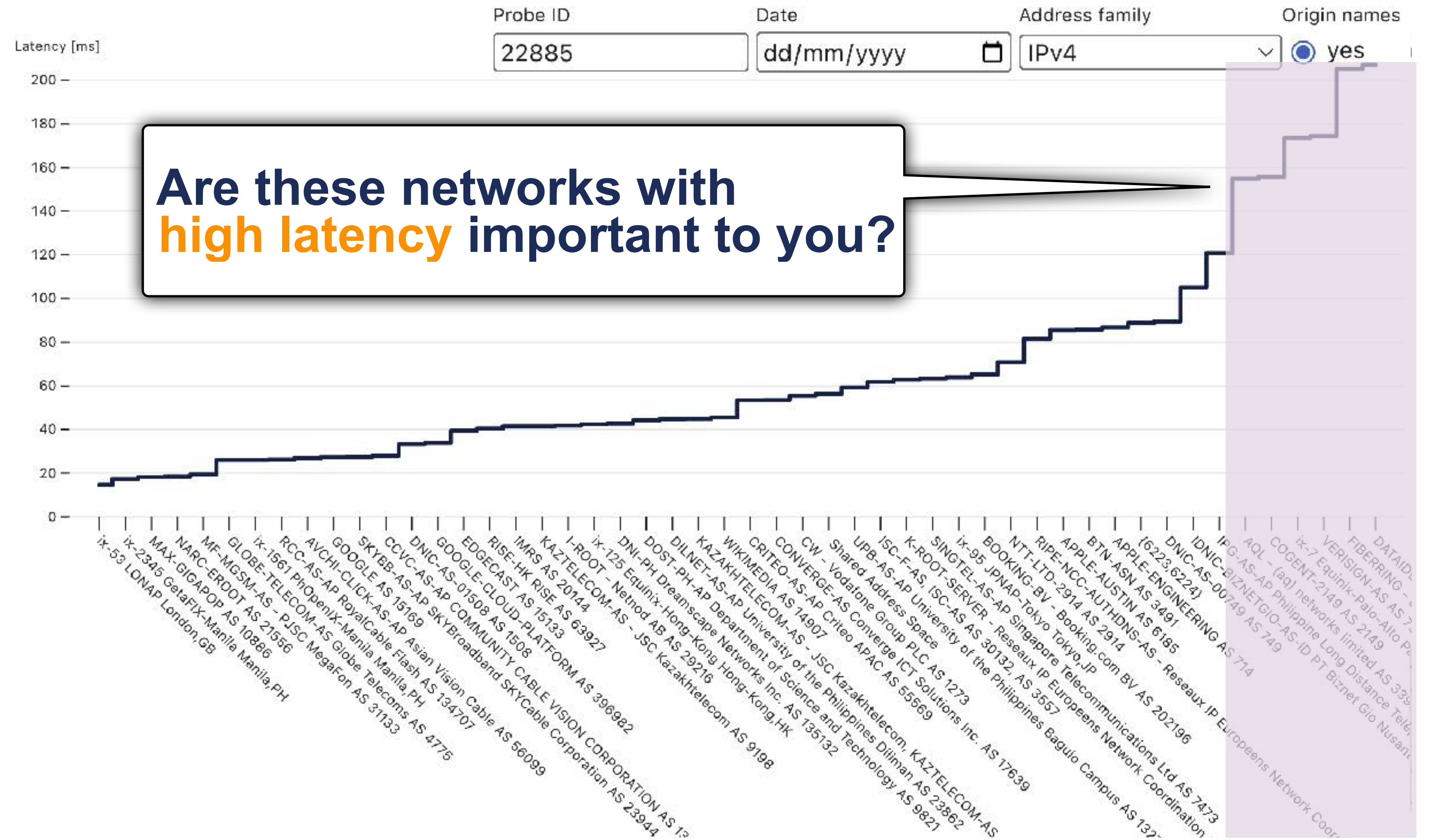
Your network **neighbourhood** as seen through RIPE Atlas



Try your probe here



<https://observablehq.com/@ripenccl/atlas-probe-neighbourhood?>



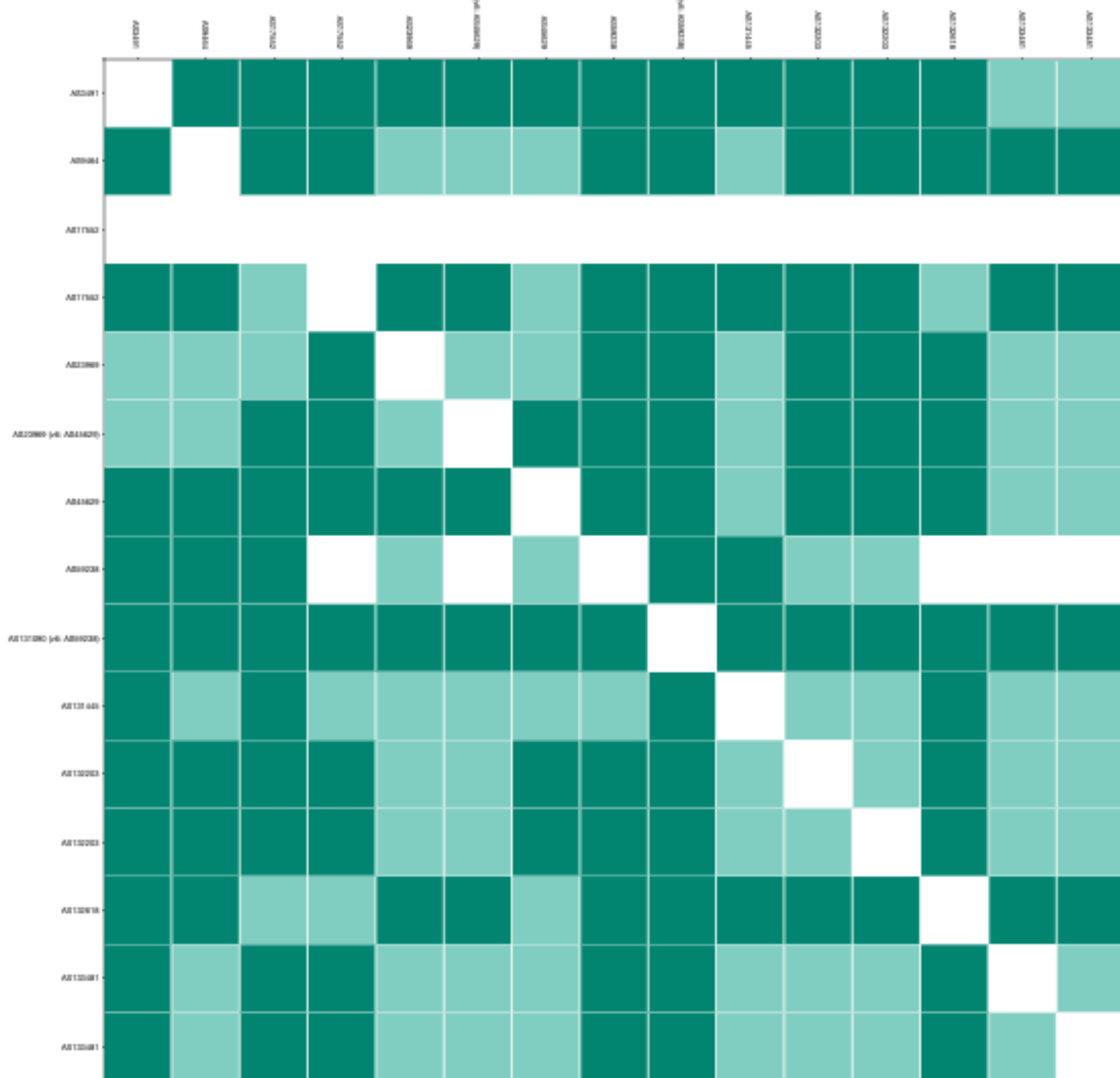


Mouse click on every box to see the traceroute path. | Showing 11 of 11 ASNs (IPv4). | Click here for IPv6.

Show Filter ASNs

Hide Legend

- Local IXP found: YES, out-of-country IPs: NO
- Local IXP found: YES, out-of-country IPs: YES
- Local IXP found: NO, out-of-country IPs: NO
- Local IXP found: NO, out-of-country IPs: YES



IXP Country JEDI

Keep your traffic in Thailand LOCAL

- Local IXP found: YES, out-of-country IPs: NO
- Local IXP found: YES, out-of-country IPs: YES
- Local IXP found: NO, out-of-country IPs: NO
- Local IXP found: NO, out-of-country IPs: YES

<https://jedi.ripe.net/latest/PH/ixpcountry/index.html?ASNS=all&ipv=v4>

More reasons to love RIPE Atlas



12,000 Probes

Global Coverage

Trusted Source

Non-profit organisation
Volunteers: End Users

Safe and Secure

Regular third-party security review

Open Data

Measurement results open to all

Community Driven

From the community & RIPE NCC
for the community

Fair Use/
NON Monetary





What do you do now?

- 1 Create a RIPE NCC Access **ACCOUNT**
- 2 **INSTALL** RIPE Atlas probe strategically
- 3 **PEER** with **RIS**
- 4 Start testing, **MONITOR** your network performance
- 5 Got a disconnected probe? **Reconnect!**

Redeem This Voucher
Sawasdee24

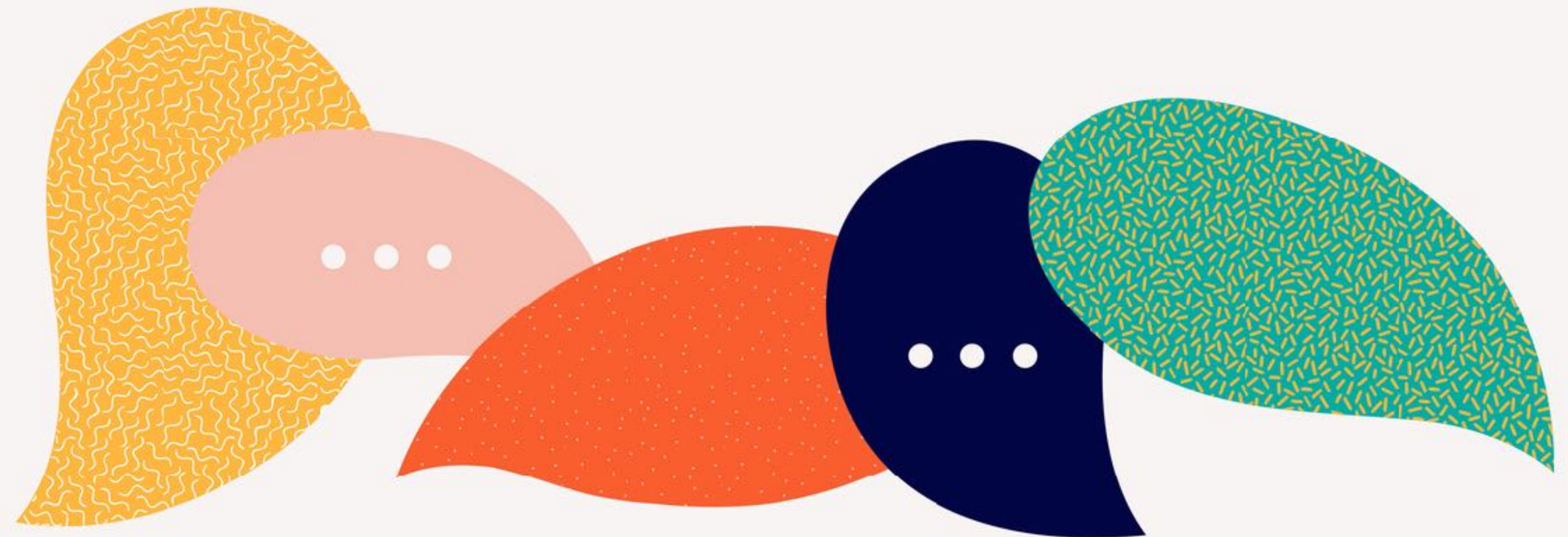


Let's talk...



Tell us what is
important to you!

We can develop
new **prototypes!**





Questions



lhestina@ripe.net

atlas@ripe.net

Use Cases on RIPE Labs



A distributed view of the Internet

https://labs.ripe.net/author/alun_davies/ripe-atlas-a-distributed-view-of-the-internet/

The Kazakhstan outage as seen from RIPE Atlas

<https://labs.ripe.net/author/emileaben/the-kazakhstan-outage-as-seen-from-ripe-atlas/>

Detecting DNS root manipulation

<https://labs.ripe.net/author/qasim-lone/detecting-dns-root-manipulation/>

DNS vulnerability, configuration errors that can cause DDoS

https://labs.ripe.net/author/giovane_moura/dns-vulnerability-configuration-errors-that-can-cause-ddos/