

k.root-servers.net
by
RIPE NCC

Daniel Karrenberg
Chief Scientist, RIPE NCC



Who is talking: Daniel Karrenberg

- **1980s**: helped build Internet in Europe
 - GUUG, EUUG, EUnet, Ebone, IXes, RIPE, ...
- **1990s**: helped build RIPE NCC
 - 1st CEO: 1992-2000
- **2000s**: Chief Scientist & Public Service
 - Trustee of the Internet Society, IETF, ...
- **2010s**: Chief Scientist
 - Interests: Internet measurements, stability, trust & identity in the Internet, ...

What DNS Root Name Servers Do

Tell where are



once every



What DNS Root Name Servers Do



Attack Mitigation

Diversity



12 Professional Operators / 13 Independent Operations

DDoS Mitigation

Over-provisioning:



Not to scale !

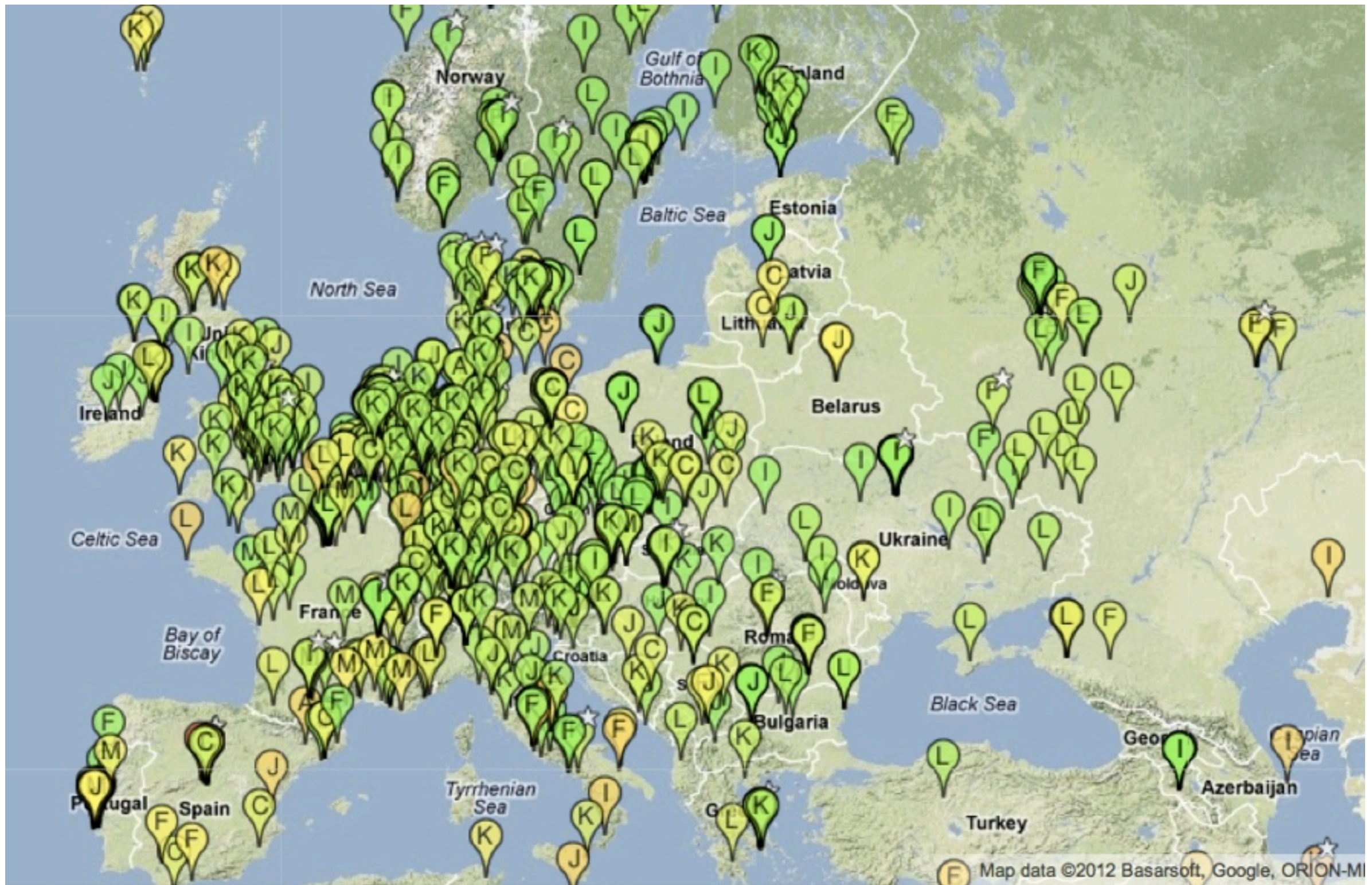
DNS Root Name Server Locations



DNS Root Name Server Locations

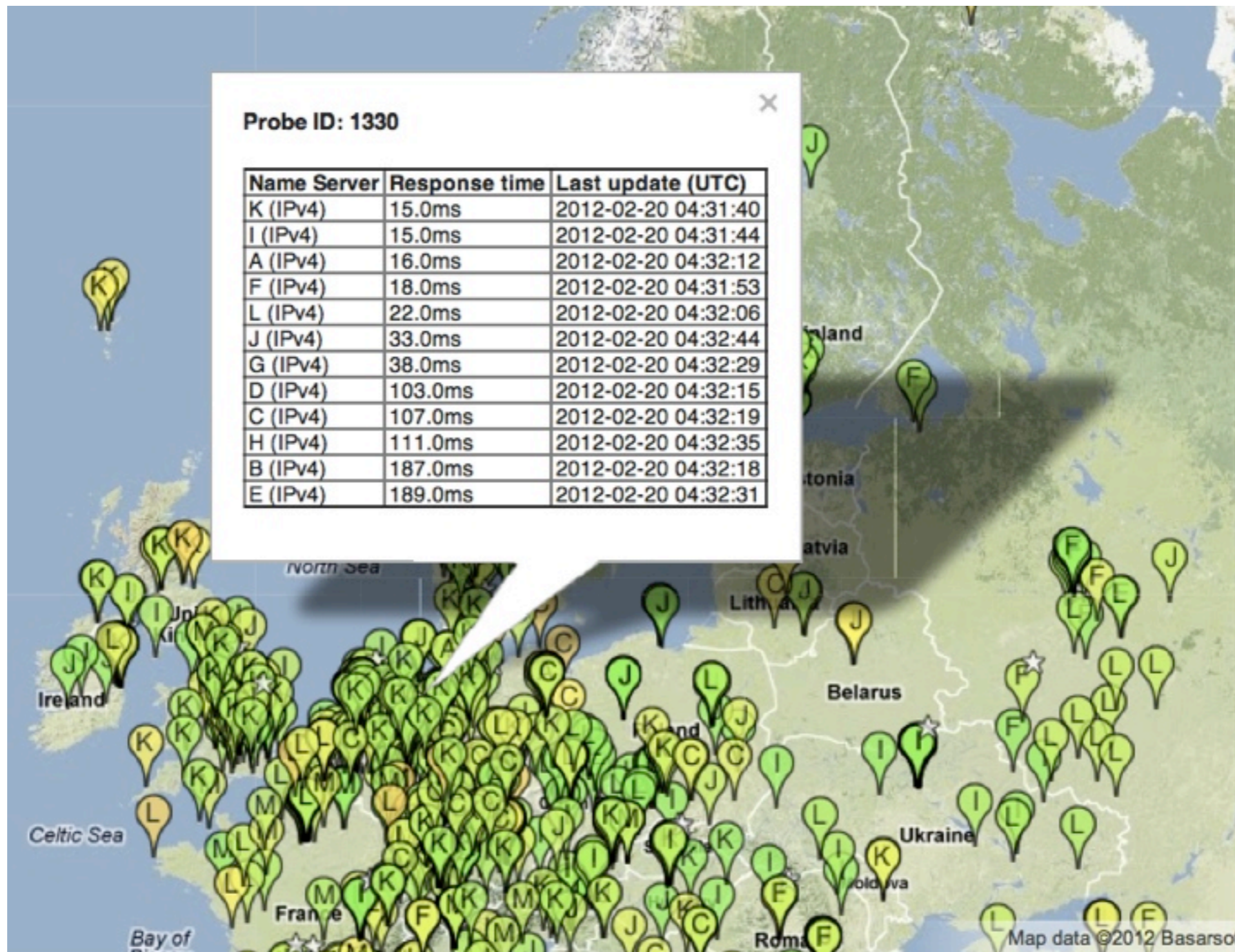


Closest Root Server as seen by RIPE Atlas



2012-02-20 05:02:01 UTC.

Closest Root Server as seen by RIPE Atlas



k.root-servers.net: Locations



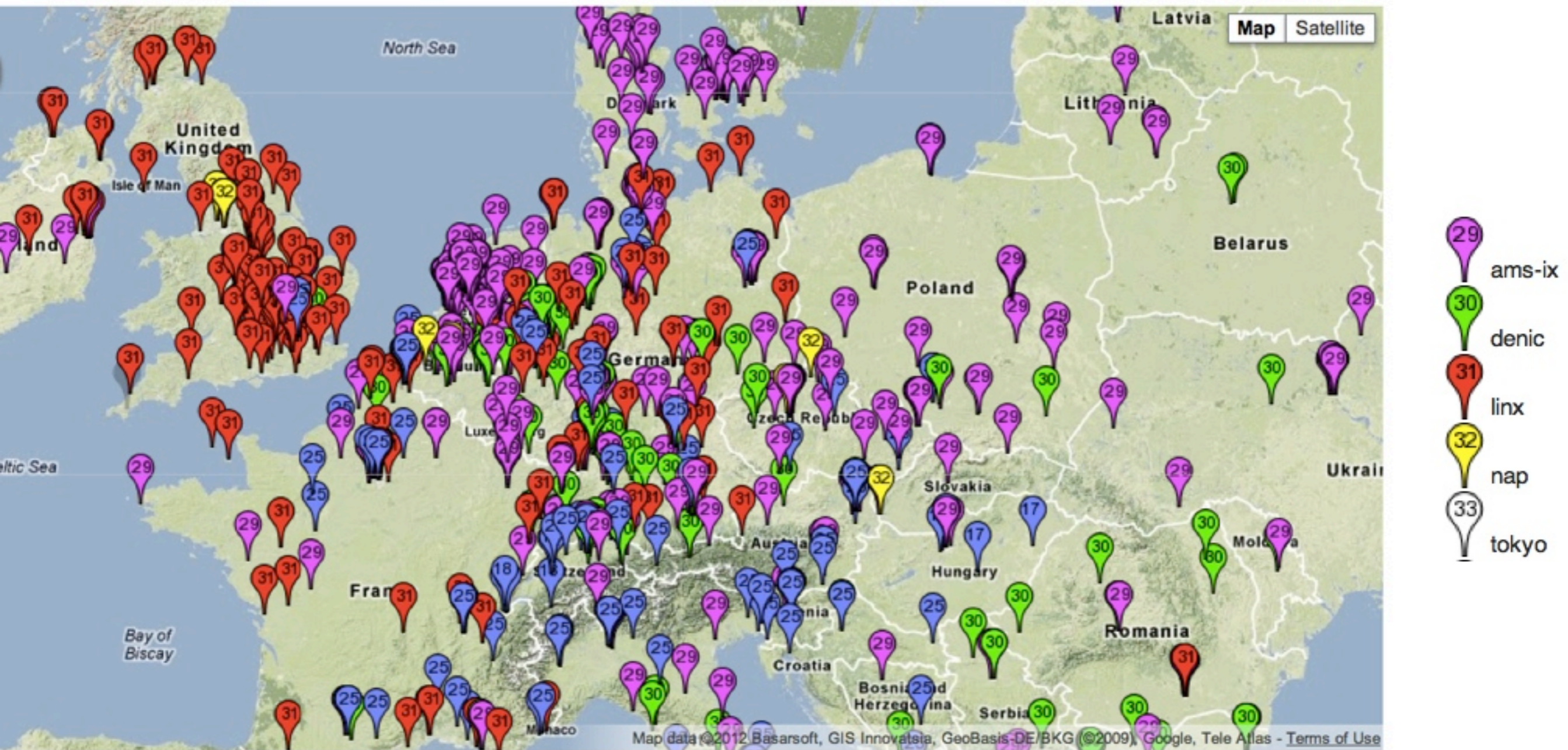
k-root: Instance seen by RIPE Atlas



Instances Map produced at: 2012-02-20 04:50:16 UTC.
 between 2012-02-19 05:20 UTC and 2012-02-20 04:50 UTC.

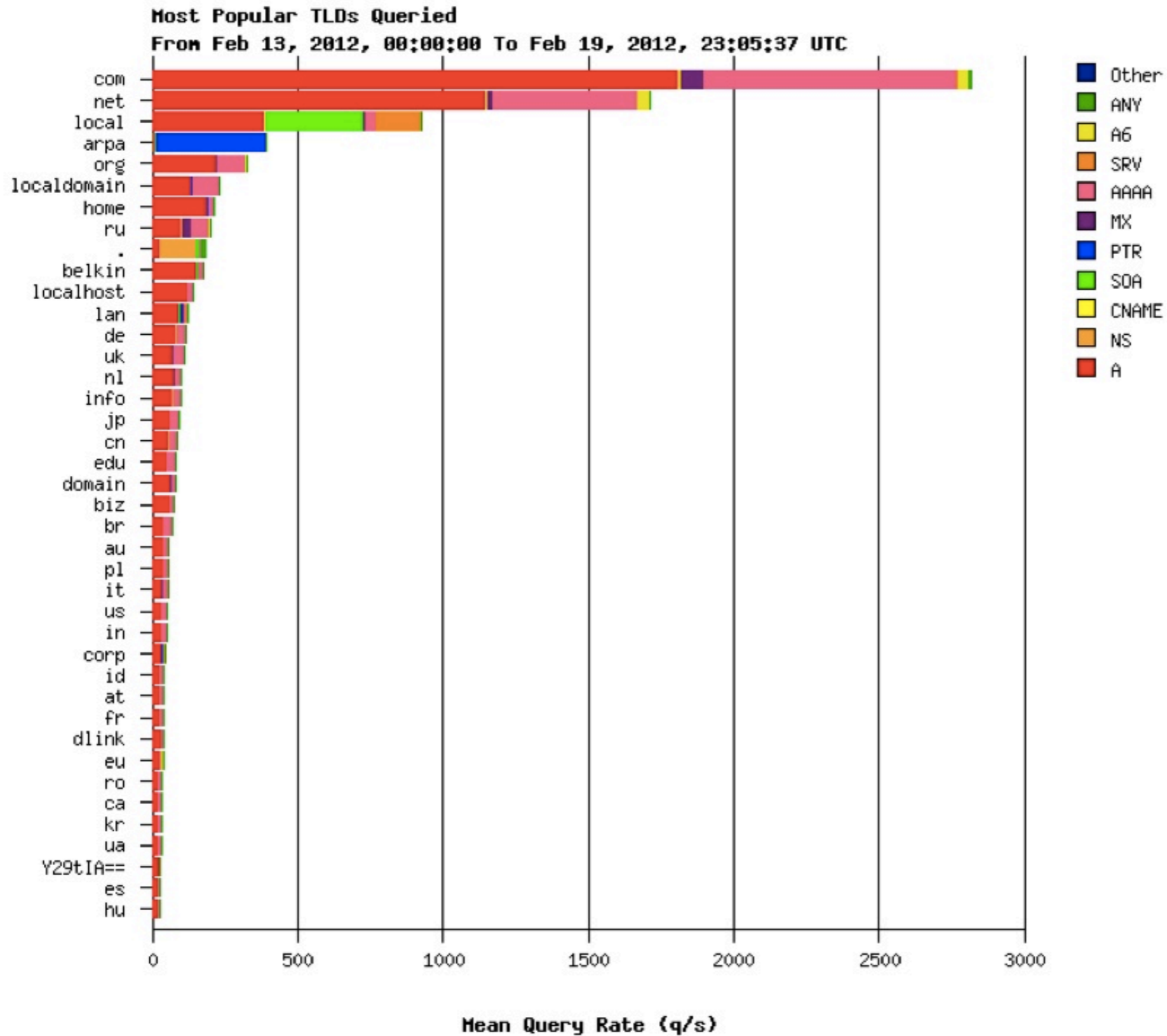
- 8 isnic
- 12 nskix
- 13 qtel
- 16 apnic
- 17 bix
- 18 cern
- 19 delhi
- 21 emix
- 22 ficix
- 23 grnet
- 25 mix
- 27 poznan

k-root: Instance seen by RIPE Atlas

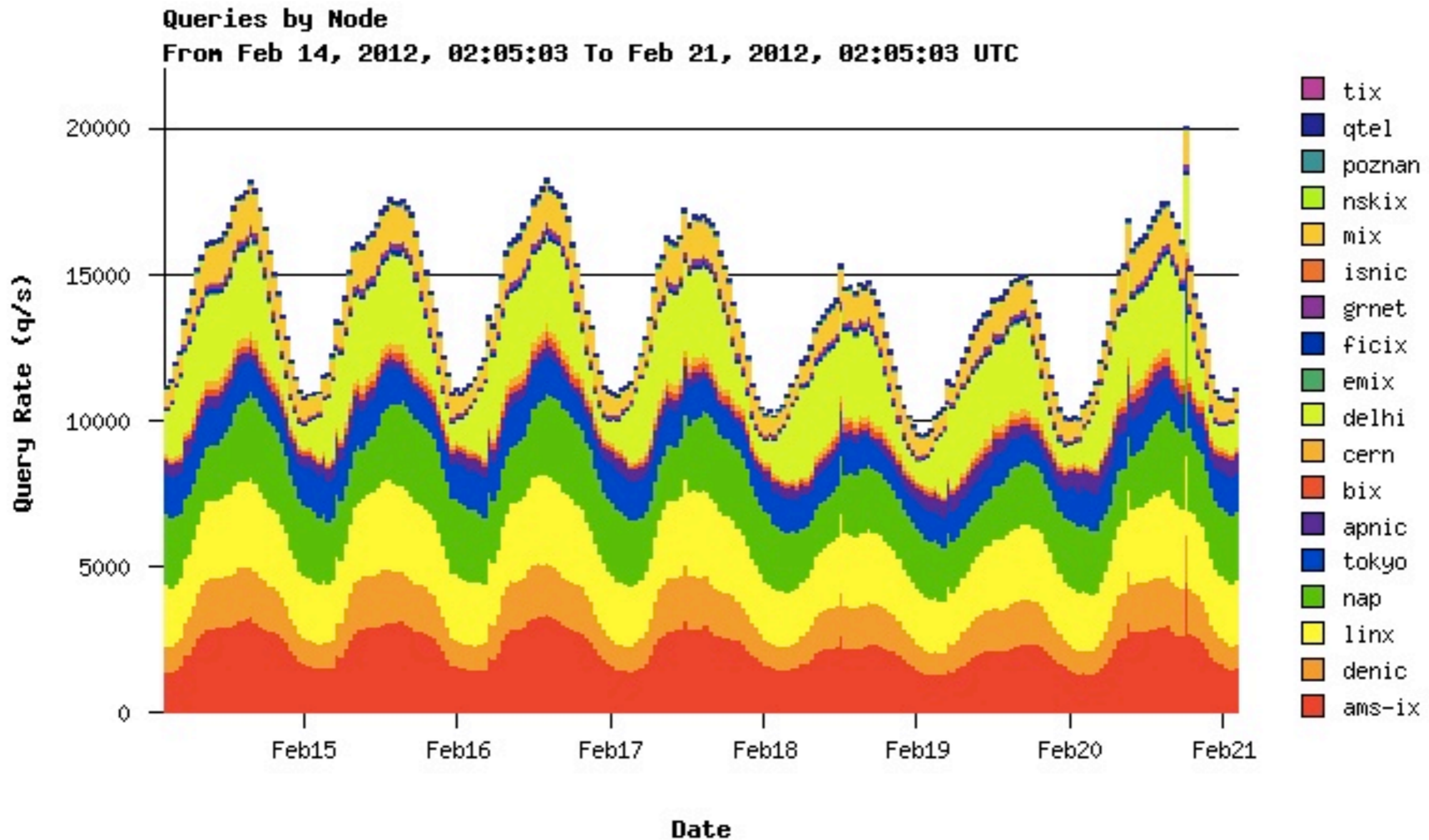


- 8 isnic
- 12 nskix
- 13 qtel
- 16 apnic
- 17 bix
- 18 cern
- 19 delhi
- 21 emix
- 22 ficix
- 23 grnet
- 25 mix
- 27 poznan

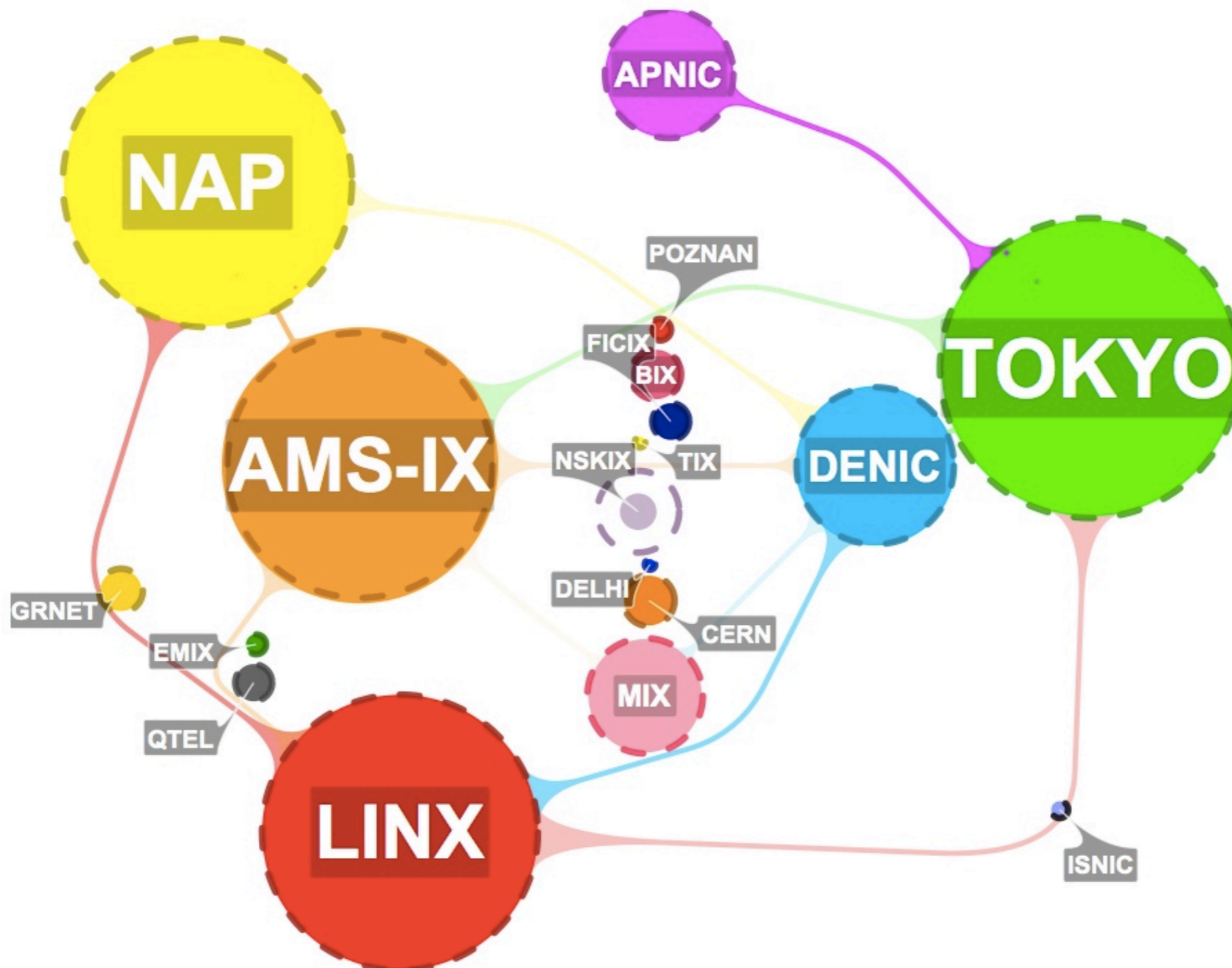
k.root-servers.net: TLDs Queried



k.root-servers.net: Query Load



k.root-servers.net: Load Distribution



DDoS Mitigation

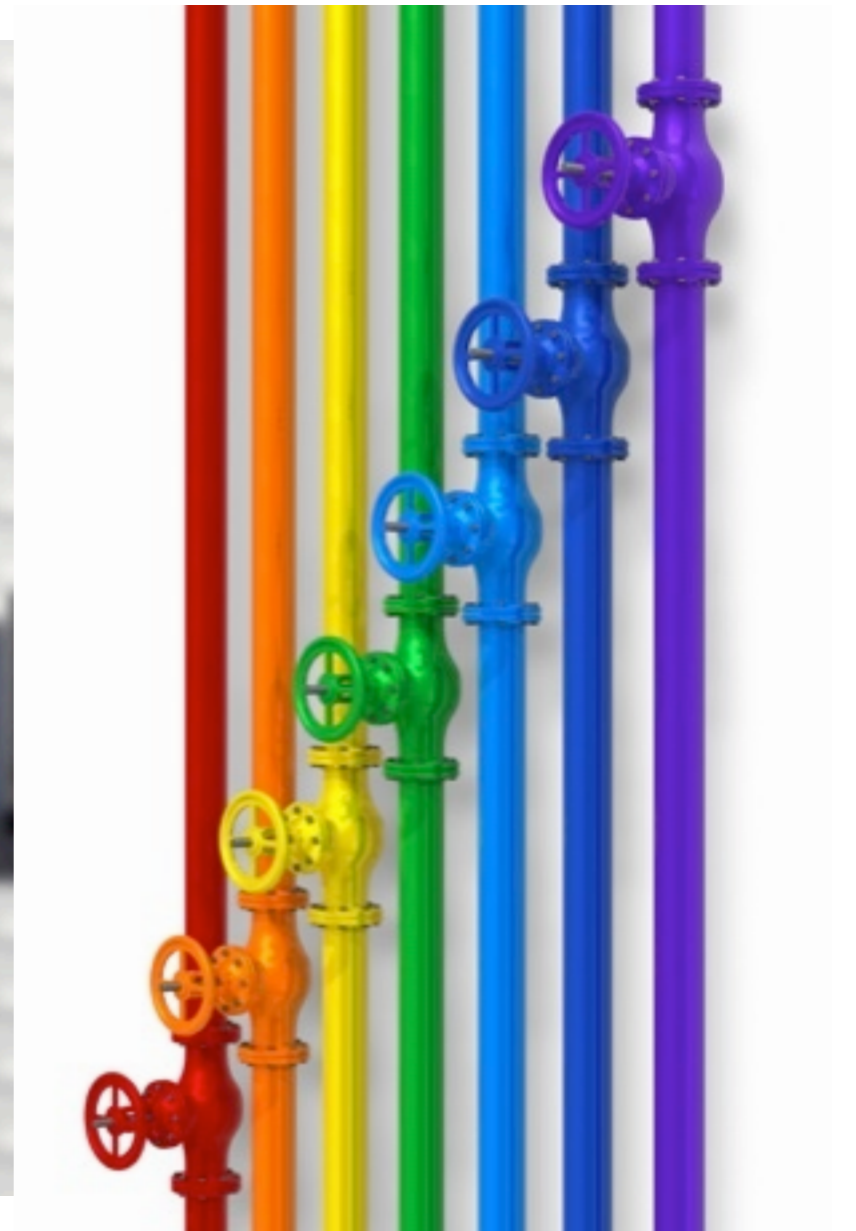
Over-provisioning:



Not to scale !

DDoS Mitigation

- Cooperation with ISPs



DDoS Mitigation

- Cooperation with ISPs



dnsmon



References

- root-servers.org
- k.root-servers.org
- k.root-servers.org/visualk
- atlas.ripe.net
- dnsmon.ripe.net
- www.isoc.org/briefings/019
- www.isoc.org/briefings/020
- labs.ripe.net

Questions?

