



RIPE
NCC

RIPE Atlas

Christian Teuschel
Science Division
RIPE NCC

Peering Day, March 2015, Bratislava

- One benefit of peering at an IXP is to decrease latency
- How to know where latency needs improving?

Homepage > Attendees

18 - 19th March

Attendees

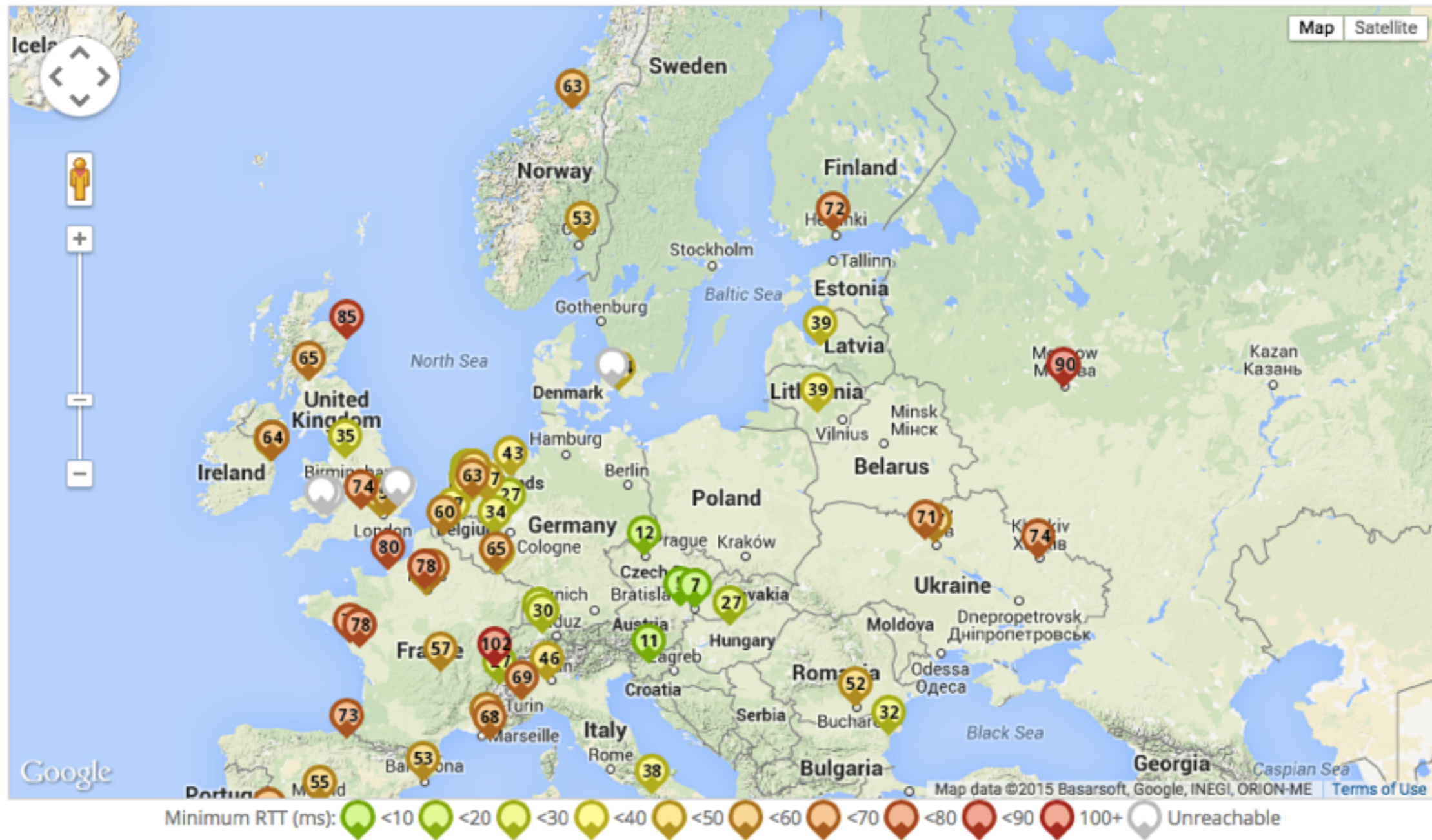
List of CEE attendees who agreed with publishing of name, surname and ASN.

250 registered

Surname	Name	Company	Country	
Abdallah	Mohammed Awal	HIGH TECHNOLOGY SOLUTIONS	GH	02416
Aberham	Markus	A1 Telekom Austria	AT	8447
Adamia	Alexander	Caucasus Online	GE	20771
Adler	Jozsef	DIGI HU	HU	20845
Alexa	Ladislav	XH CZ	CZ	39896
Angei	Janos	BIX - Budapest Internet Exchange	HU	5507
Arnaud	Fenioux	France IX	FR	51706
Arnaudova	Anka	Cisco Systems	CZ	123
Avi	Rene	next layer communications	AT	1764
Aydin	Yildiz	ECIX	DE	9033
Babal	Robert	Slovak Telekom	SK	6855
Bacher	Martin	T-Mobile AT	AT	8412

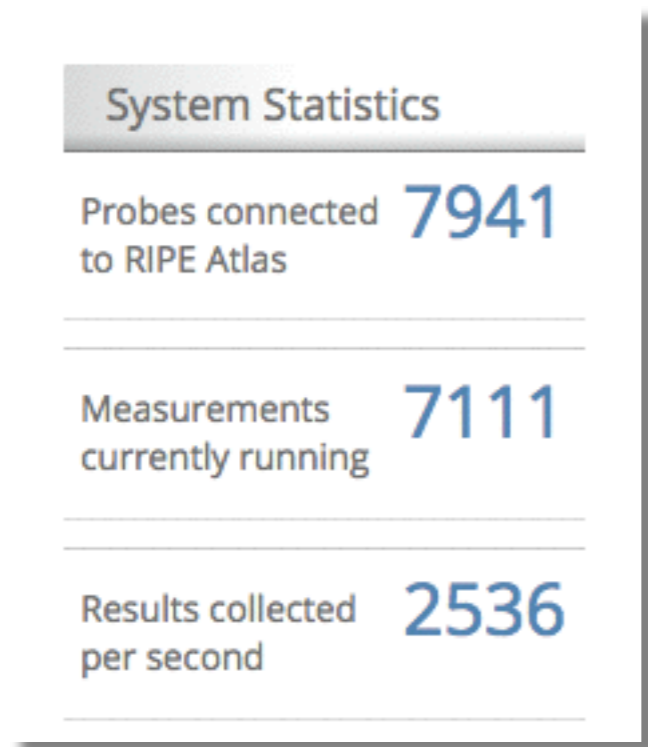
- Randomly selected an ASN
- Looked up announced IP space in RIPEstat (<https://stat.ripe.net>)
- Picked one pingable IP address

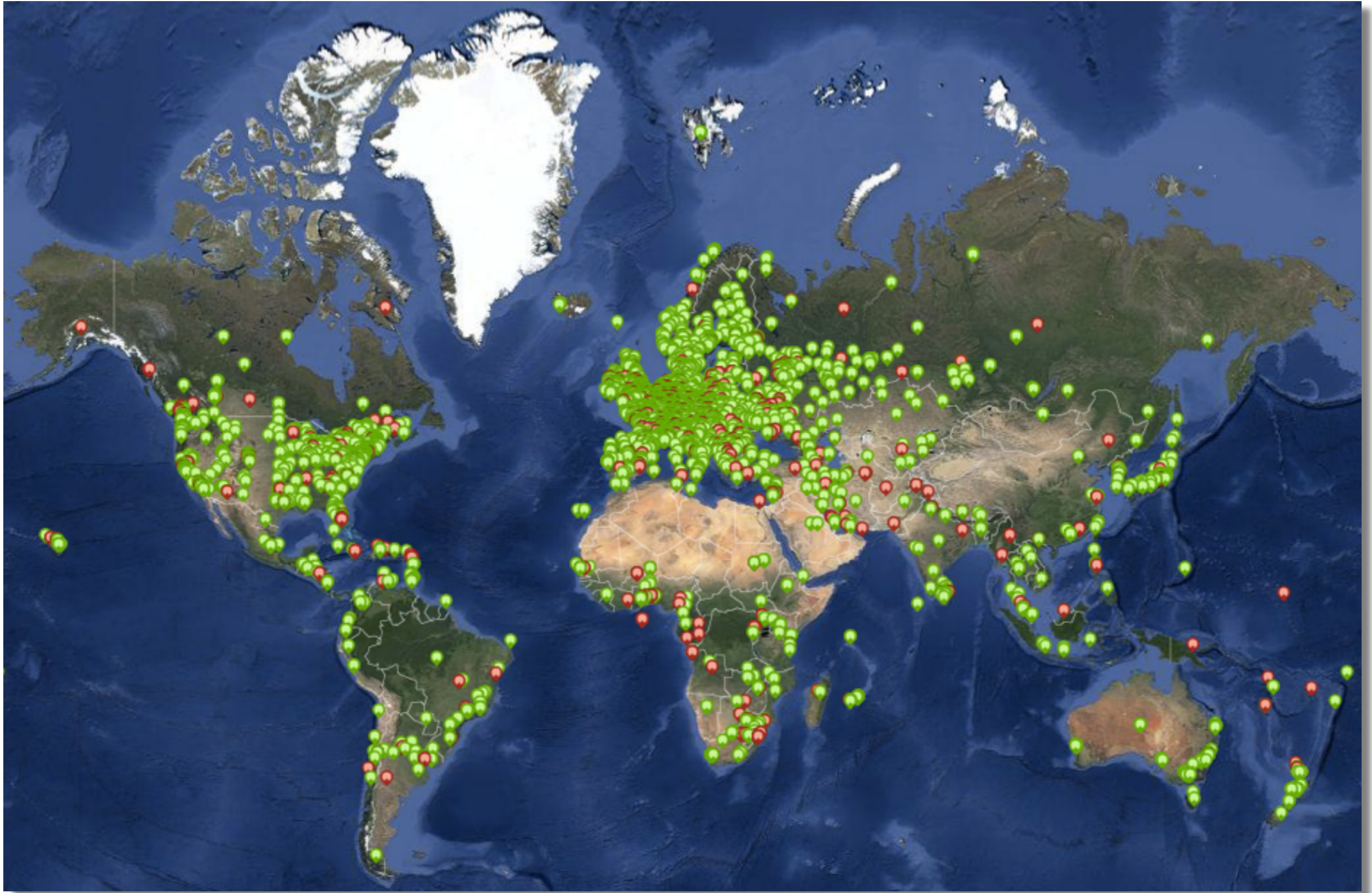
Quick Look



<https://atlas.ripe.net/udm/quicklook/>

- Network for Internet measurements
- ~**7000** concurrent measurements
- Collecting ~**2500** results per second
- +**8000** measurement devices (probes)





Christian Teuschel - Peering Day - March 2015, Bratislava

- v1 & v2: Lantronix XPort Pro
- v3: TP-Link TL-MR3020 powered from USB port
 - Does not work as a wireless router (**WiFi is disabled**)
 - Same functionality as the v1/v2 probes
- RIPE Atlas anchor: Soekris net6501-70



- Types:

- Ping
- Traceroute
- DNS
- SSL Certificate

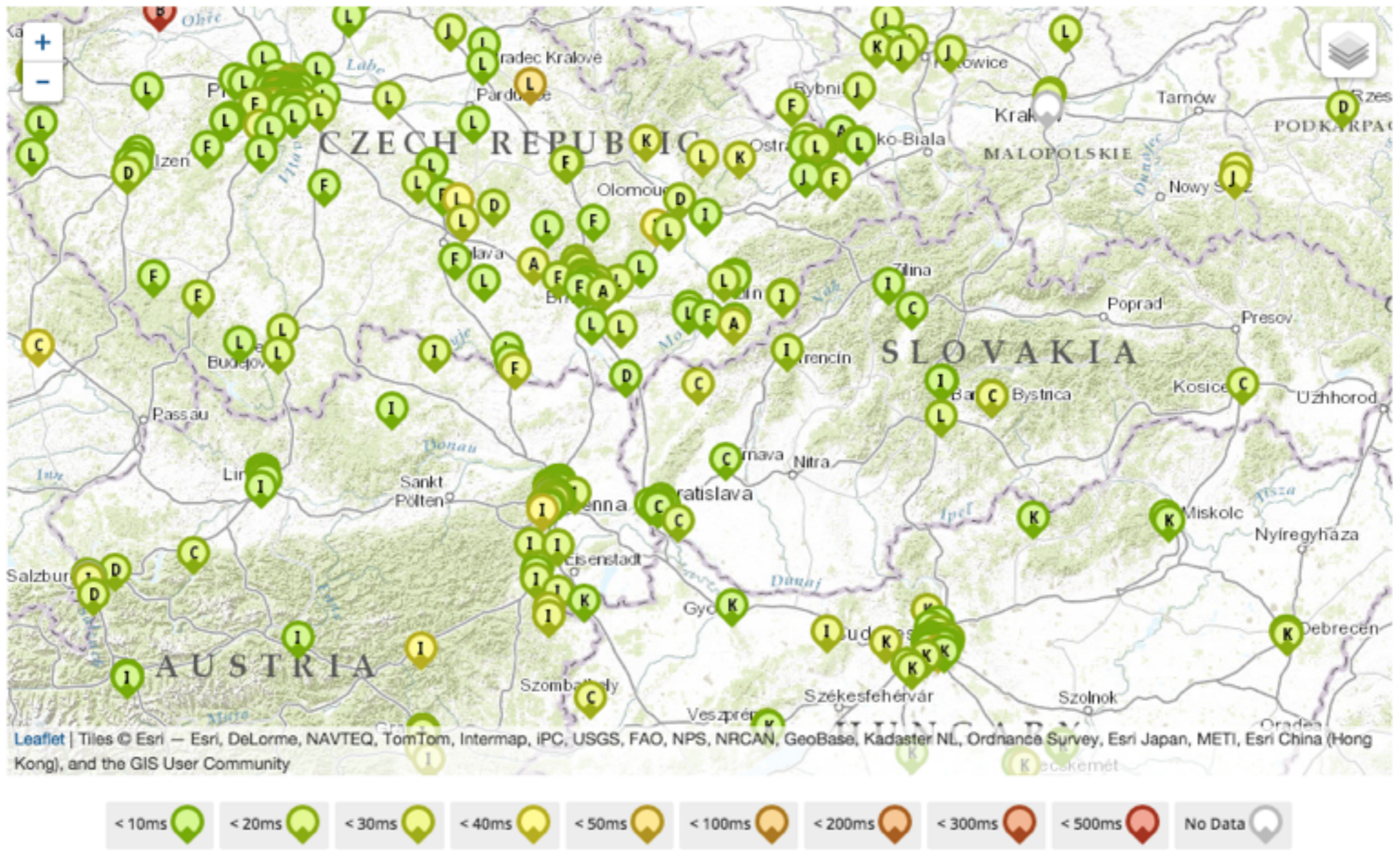
- Categories

- Built-in
- User-defined

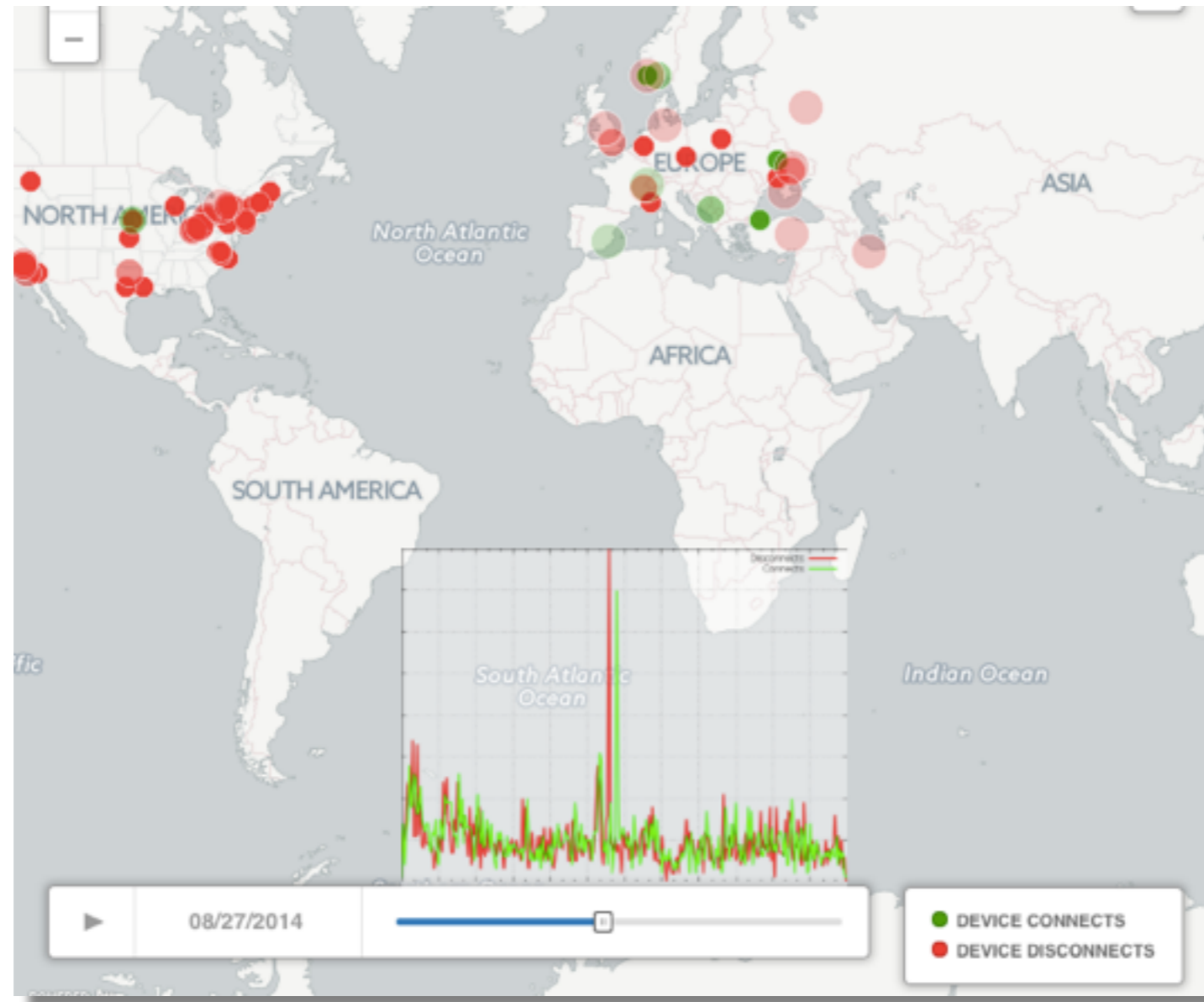
The screenshot shows the RIPE Atlas interface. At the top right, there is a green button labeled '+ Create a Measurement'. Below it, there are several filter controls: a search box, a dropdown for 'Any Status', a dropdown for 'IPv4/v6', a dropdown for 'All types' (which is open, showing options: Ping, Traceroute, DNS, HTTP, SSL Certificate), and a dropdown for 'Of all time'. There are also blue and red buttons with a downward arrow and an 'x' respectively. Below the filters, there are tabs for 'My Hidden Measurements' and 'Public Measurements'. A table below shows measurement details:

	Probes	Status
to 140.78.1.1. 78.1.1 ago	Requested: 100 Currently participating: 100	■
to 195.47.235.1. 47.235.1 ago	Requested: 100 Currently participating: 100	■

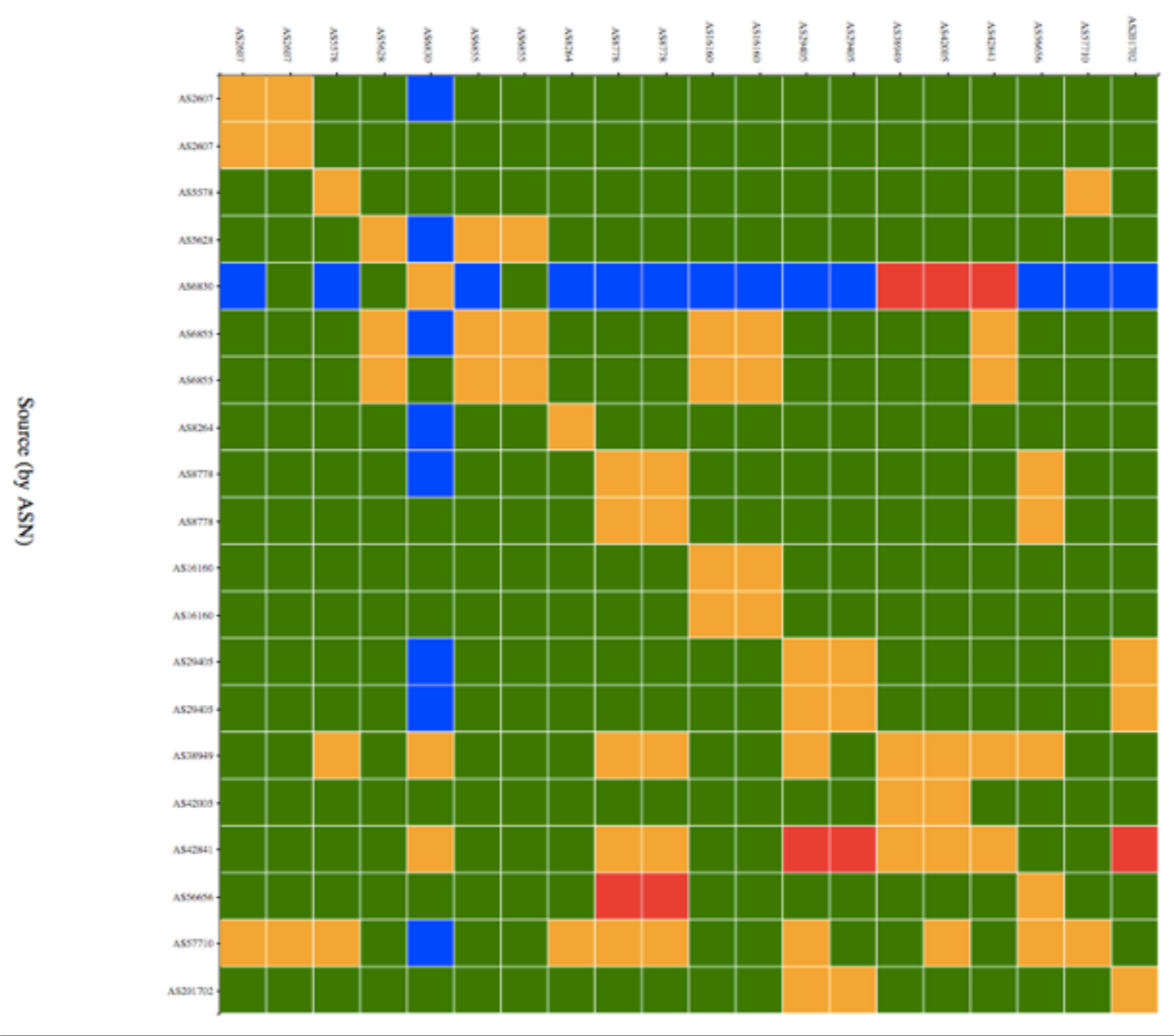
- What's the fastest response?



<https://atlas.ripe.net/results/maps/comparative-dns-root-rtt/>



- <https://labs.ripe.net/Members/emileaben/visualising-network-outages-with-ripe-atlas>
- <https://labs.ripe.net/Members/emileaben/facebookdown-and-what-internet-data>
- <https://labs.ripe.net/Members/emileaben/time-warner-cable-outage>



<http://sg-pub.ripe.net/emile/ixp-country-jedi/SK-2015-03/ixpcountry/>
<https://github.com/emileaben/ixp-country-jedi>

- IPv4 paths with non SK IPs:

- CZ: 3.25%
- AT : 2.25%
- NL: 1.50%
- DE : 1.0%

- IPv6 paths with non SK IPs:

- DE : 4.08%
- NL : 4.08%
- AT : 4.08%
- CZ : 2.04%

- Hosting a probe gets you credits = user-defined measurements
- <https://atlas.ripe.net/apply>



- Built-in graphs

General Information Edit

Id	157
MAC Address	00:20:4A:C8:20:B9
Architecture	probev1
Firmware Version	4670
Router Type	Fritzbox
Bandwidth Limit	12 Kbit/s
DNS Entry	Off
Shared Publicly	Yes
User Tags	DSL Home NAT
System Tags	V1 Resolves A Correctly Resolves AAAA Correctly IPv4 Works IPv6 Works Auto GEOIP country

Connection & Traffic ↗

Bits/s Packets/s

30 k
20 k
10 k
0

17. Mar 04:00

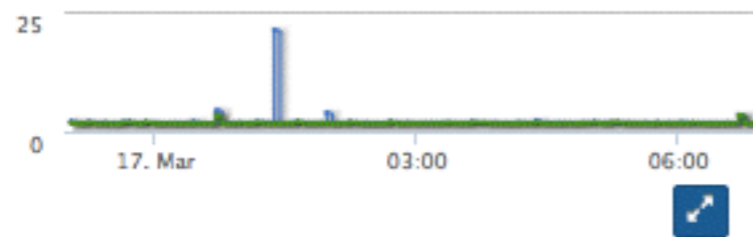
Connected Time 🕒 5 days, 18 hours

February March

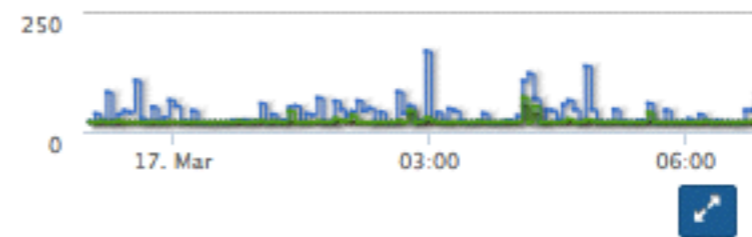
- Built-in graphs

Graphs

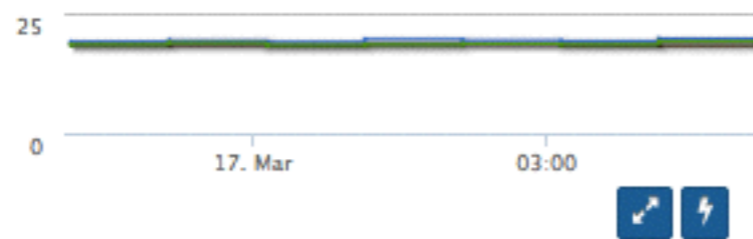
#1 First Hop to tt01.ripe.net (193.0.0.228)



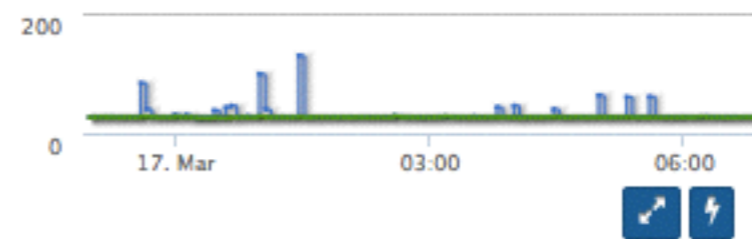
#2 Second Hop to tt01.ripe.net (193.0.0.228)



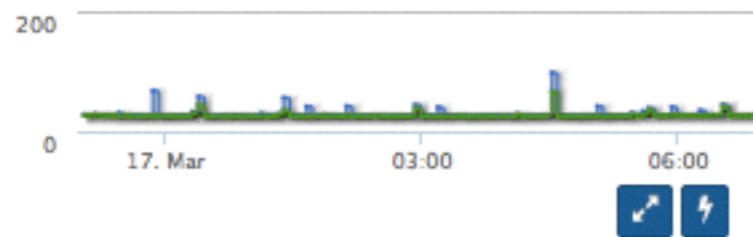
#1026 Ping to 84.205.83.1 (84.205.83.1)



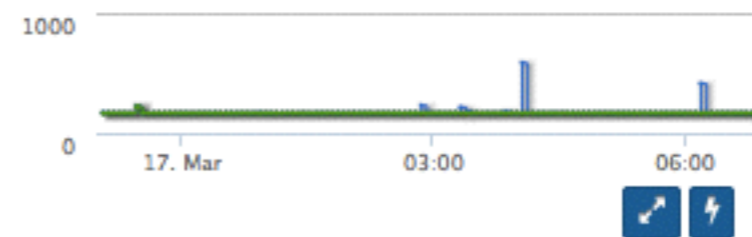
#1009 Ping to a.root-servers.net (198.41.0.4)



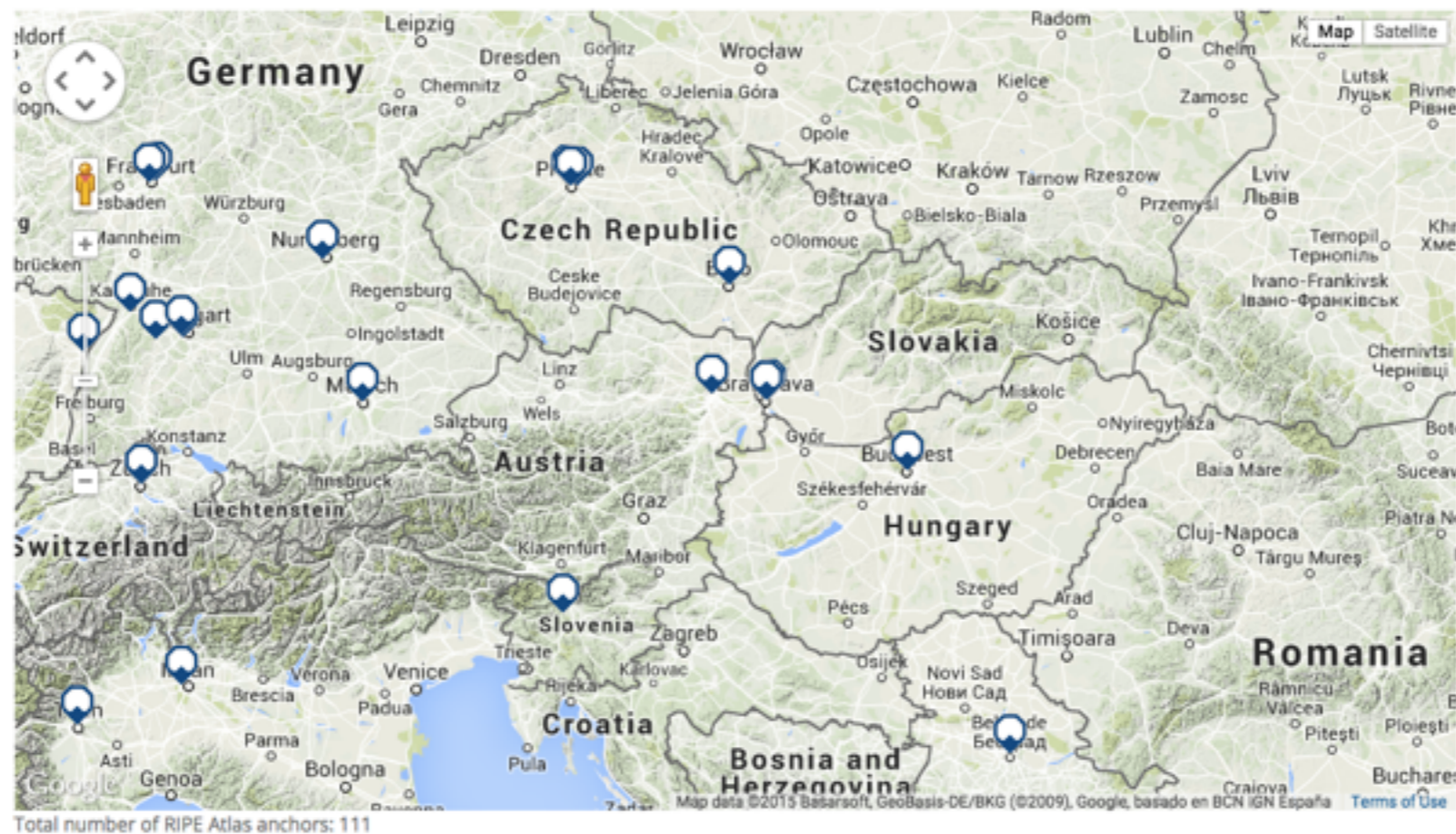
#2009 Ping to a.root-servers.net
(2001:503:ba3e::2:30)

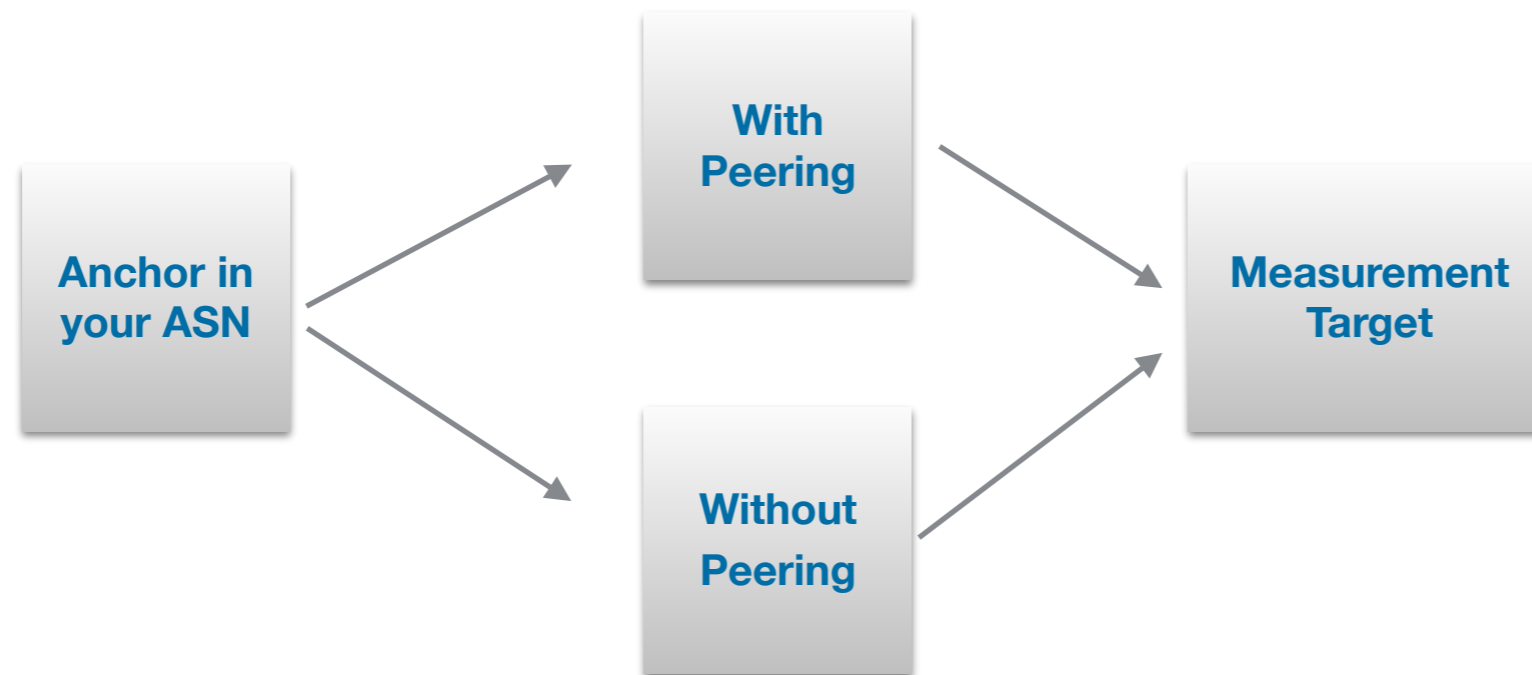


#1010 Ping to b.root-servers.net (192.228.79.201)



- Probe on steroids
 - More measurements, more credits
- <https://atlas.ripe.net/get-involved/become-an-anchor-host>





- https://labs.ripe.net/Members/daniel_gomez/basic-evaluation-of-new-ixp-peering-partners-with-ripe-atlas-and-zabbix

- RESTful API
- Security precautions to secure measurements
- Atlas infrastructure to ensure scalability, performance and reliability
- Other measurement types (e.g. NTP, Wireless, etc.)
- Engagement in data visualisations (RIPE Atlas Hackathon end of March 2015)
- Code contributions on GitHub
- Etc.

- <https://atlas.ripe.net>
- Mailing list for active users: ripe-atlas@ripe.net
- Articles and updates: <https://labs.ripe.net/atlas>
- Questions: atlas@ripe.net
- Twitter: @RIPE_Atlas and #RIPEAtlas

Questions?

