



**RIPE  
NCC**

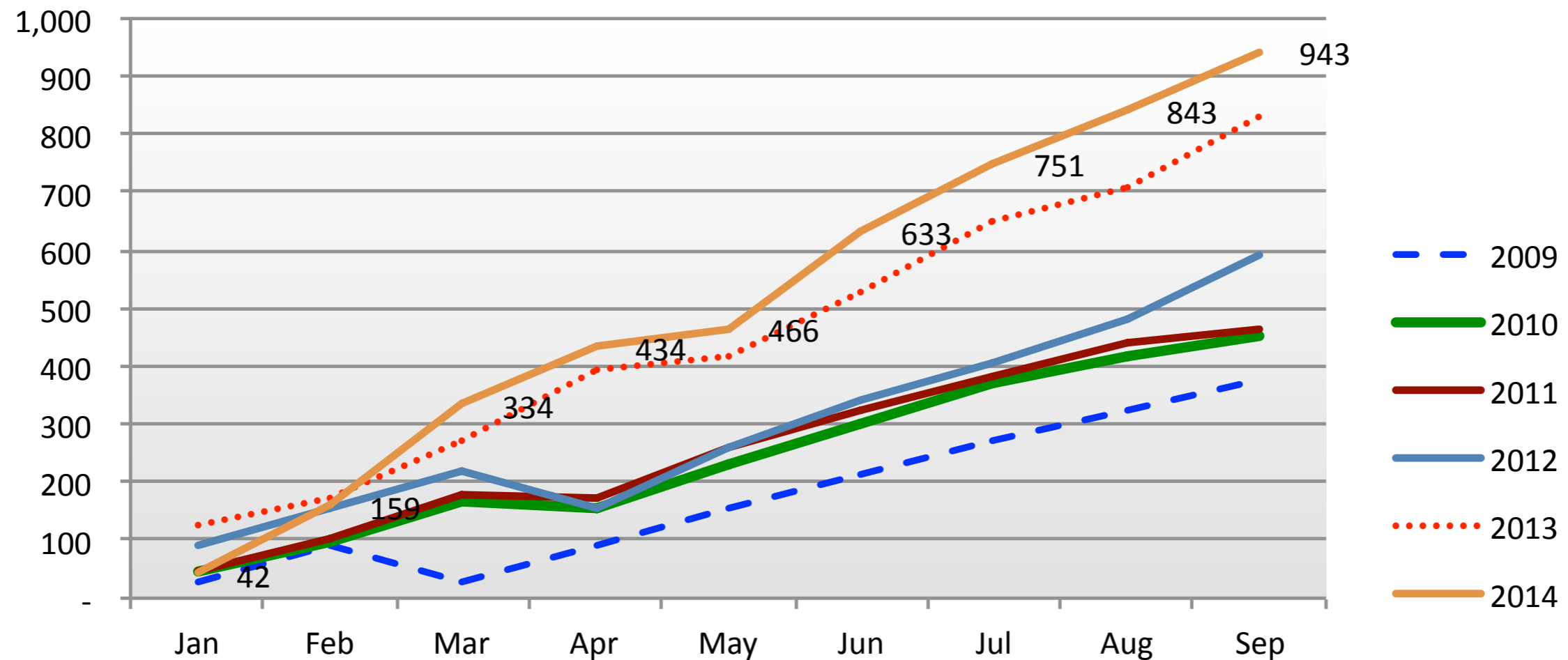
## **Financial update Q3 2014**

---

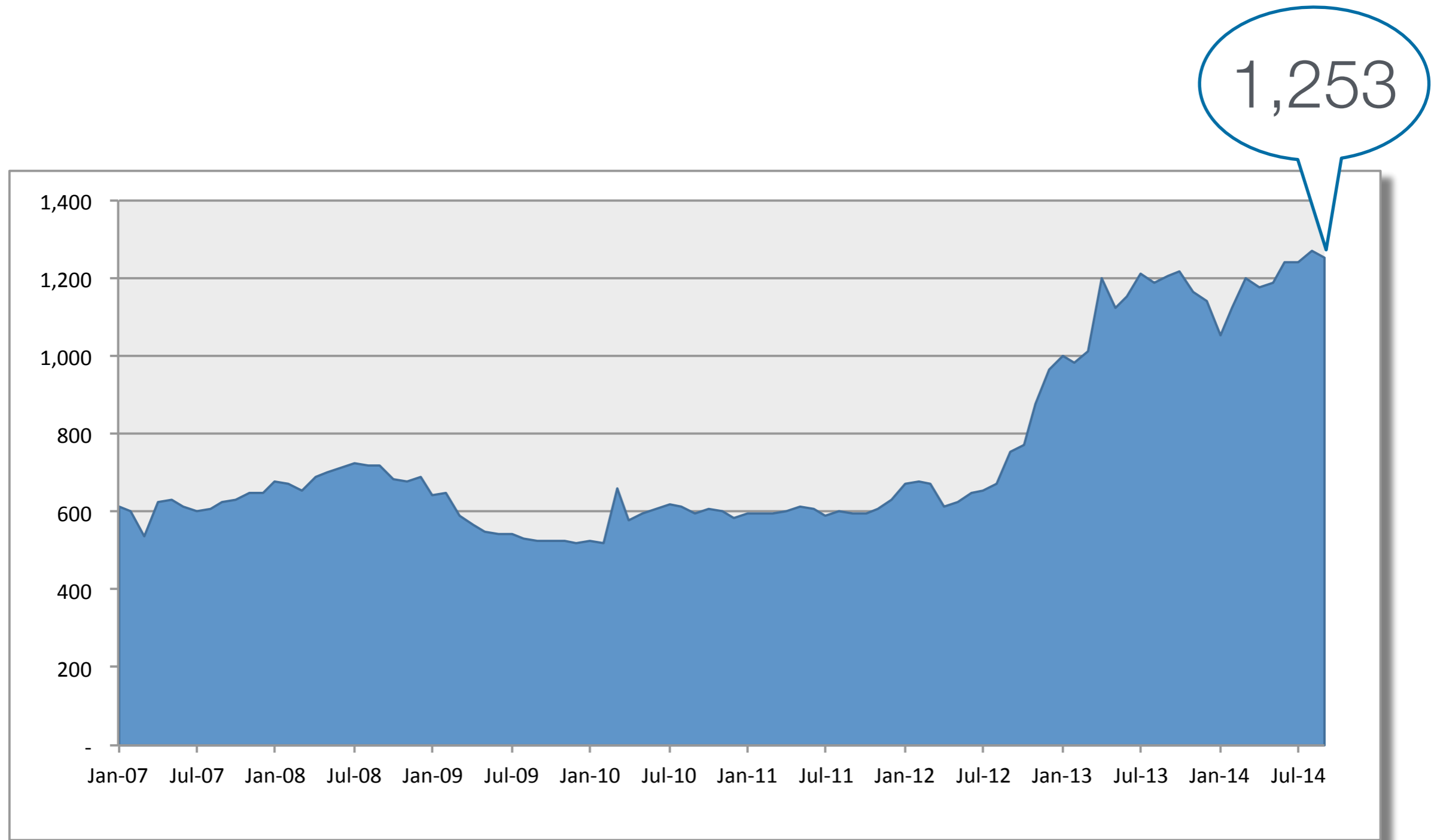
Jochem de Ruig  
CFO  
RIPE NCC

	<b>Q3 2014</b>	<b>B 2014</b>	<b>2013</b>
Revenue (in million EUR)	17,3	7%	13%
Expenses (in million EUR)	15,4	-5%	9%
Surplus (in million EUR)	2,3	1288%	117%
Capital expense (in million EUR)	0,7	-42%	35%
No. of members	10.842	2%	13%
Average expense per member (in €)	1.918	-5%	-2%
Capital / expense ratio in %	120%	13%	-

# Cumulative Membership Growth 2009 - 2014 | 3



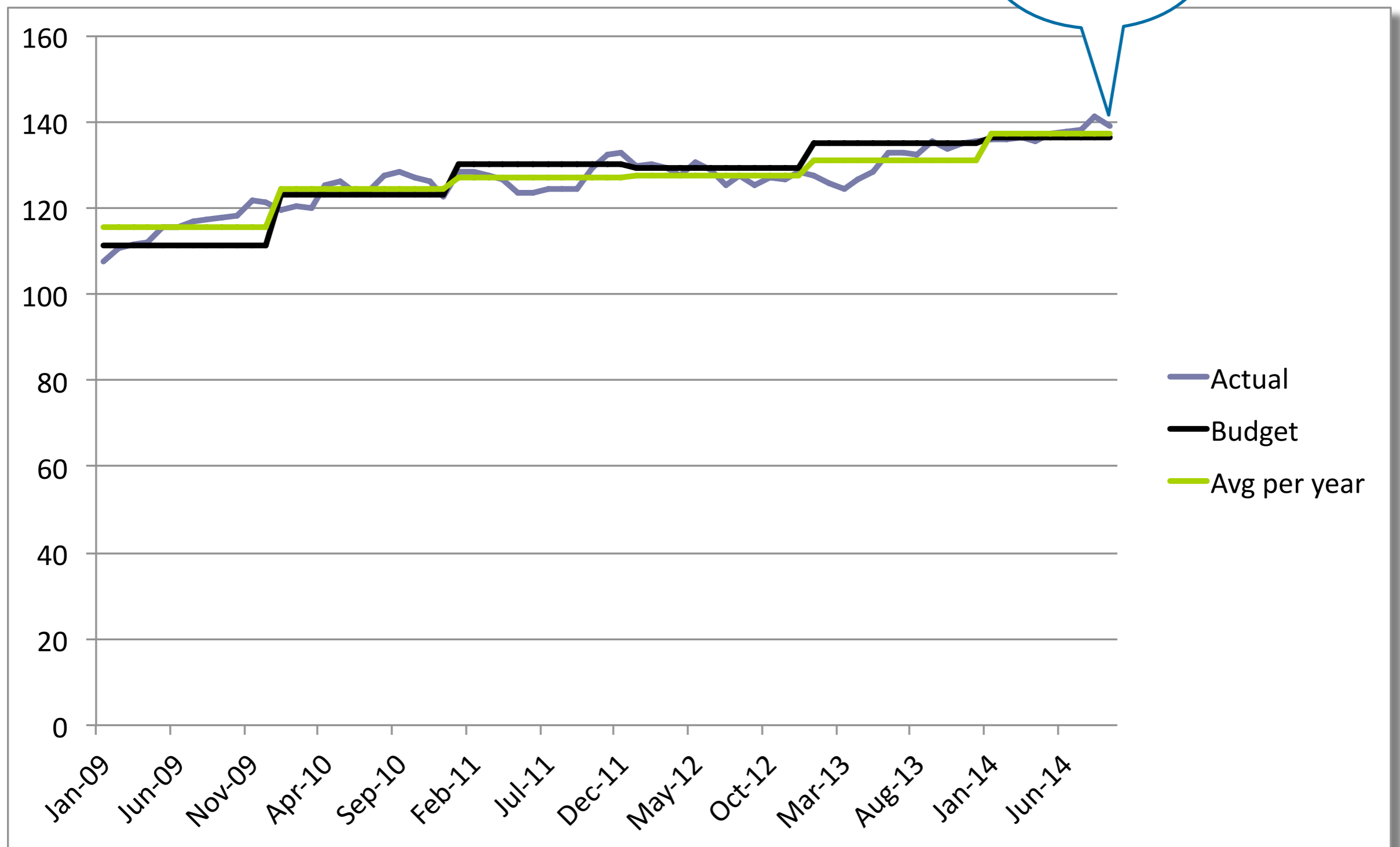
# 12 Months Membership Growth 2007 - 2014



Revenue	2014	B2014	2013	2014 vs B2014		2013 vs 2013	
Service fees	12.858	12.875	11.702	(17)	0%	1.156	10%
Independent resource fees	716	713	619	3	0%	97	16%
New Member fees	3.204	2.166	2.636	1.038	48%	568	22%
Re-opening fees	152	38	55	114	300%	97	176%
RIPE Meeting	183	203	146	(20)	-10%	37	25%
Other Income	155	113	134	42	37%	21	16%
<b>Total income</b>	<b>17.268</b>	<b>16.108</b>	<b>15.292</b>	<b>1.160</b>	<b>7%</b>	<b>1.976</b>	<b>13%</b>

- Service fee income on budget
- New members 1,038 kEUR; +48%
- Other income above budget 37%

# FTE Development 2009 - 2014



# Expense development Q3 2014

Expenses	2014	B2014	2013	2014 vs B2014	2014 vs 2013
Personnel	9.095	9.214	8.395	(119) -1%	700 8%
Housing	587	568	571	19 3%	16 3%
Office Costs	930	1.171	849	(241) -21%	81 10%
Marketing / ER	403	481	355	(78) -16%	48 14%
Contributions	248	314	335	(66) -21%	(87) -26%
IT Infrastructure	950	1.067	680	(117) -11%	270 40%
Travel	893	930	814	(37) -4%	79 10%
Consultancy	1.110	1.210	701	(100) -8%	409 58%
Financial Expenses	132	118	126	14 12%	6 5%
Total Operational Expenses	14.348	15.073	12.826	(725) -5%	1522 12%
Doubtful debts	113	113	111	- 0%	2 2%
Depreciation	983	1.096	1.204	(113) -10%	(221) -18%
Total Expenses	<b>15.444</b>	<b>16.282</b>	<b>14.141</b>	<b>(838) -5%</b>	1.303 9%

- Personnel expenses below budget -1%
- Operational expenses below budget -5%

# Balance Sheet 30 September 2014

	30 September 2014	30 September 2013
Computers	1.376	874
Infrastructure	64	212
Office equipment	78	103
<b>Fixed assets</b>	<b>1.518</b>	<b>1.189</b>
Software development	421	756
<b>Intangible fixed assets</b>	<b>421</b>	<b>756</b>
<b>Government bonds</b>	<b>7.407</b>	<b>7.358</b>
Accounts receivable	520	324
VAT	145	89
Miscellaneous receivables	2.042	1.761
<b>Current assets</b>	<b>2.707</b>	<b>2.174</b>
<b>Cash on hand</b>	<b>19.540</b>	<b>16.681</b>
<b>ASSETS</b>	<b>31.593</b>	<b>28.158</b>
Reserves	477	477
Clearing House	22.135	20.927
Surplus	2.277	1.048
<b>Capital</b>	<b>24.889</b>	<b>22.452</b>
Creditors	997	515
Wage taxes & social securities	311	303
Unearned revenues	4.159	3.887
Miscellaneous payables	1.237	1.001
<b>Current liabilities</b>	<b>6.704</b>	<b>5.706</b>
<b>LIABILITIES</b>	<b>31.593</b>	<b>28.158</b>

26,947  
+12%

23,989



	<b>2014</b>	<b>B 2014</b>	<b>2013</b>
Revenue (in million EUR)	23,2	6%	10%
Expenses (in million EUR)	21,1	-4%	7%
Surplus (in million EUR)	2,6	432%	113%
Capital expense (in million EUR)	1,1	38%	-10%
No. of members	11.150	3%	13%
Average expense per member (in €)	1.896	-6%	-5%
Capital / expense ratio in %	119%	12%	4%

