



2001:610:240:0-193.0.0.202 62.109.128 195.048.02.03 178.12.02.02 2001:610:240 193.0.0.203 195.048.02.03
62.109.128 195.048.02.03 178.12.02.02 2001:610:240 193.0.0.203 2001:610:240:0-193.0.0.202
193.0.0.203 2001:610:240:0-193.0.0.202 62.109.128 195.048.02.03 178.12.02.02 2001:610:240 193.0.0.203
2001:610:240:0-193.0.0.202 62.109.128 195.048.02.03 178.12.02.02 2001:610:240 193.0.0.203
Number Resource Organization

INTERNET NUMBER RESOURCE STATUS REPORT

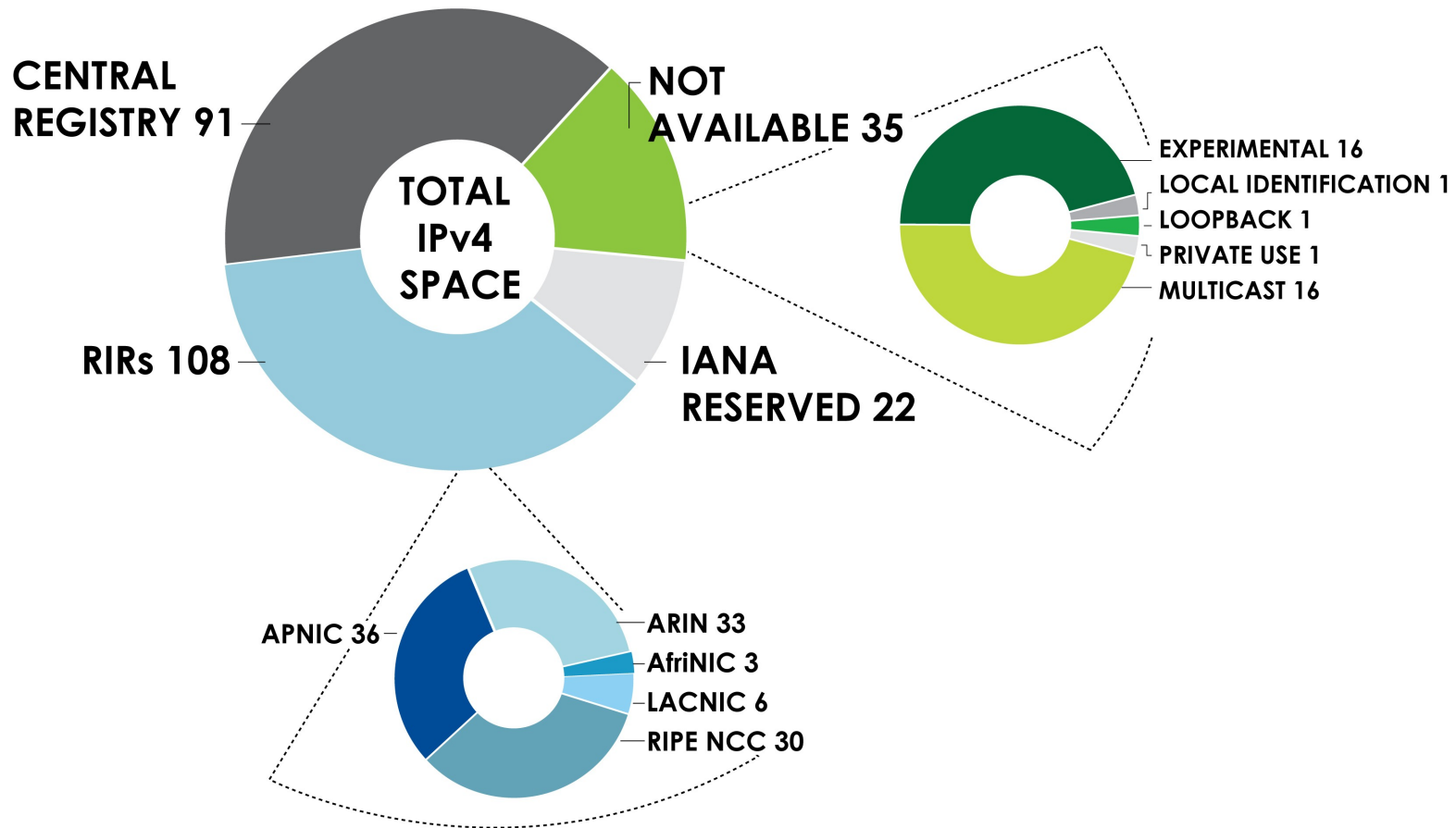
As of 31 March 2010

**Prepared by
Regional Internet Registries
AfriNIC, APNIC, ARIN, LACNIC and the RIPE NCC**

IPv4 ADDRESS SPACE

What is the status of each of the 256 /8s?

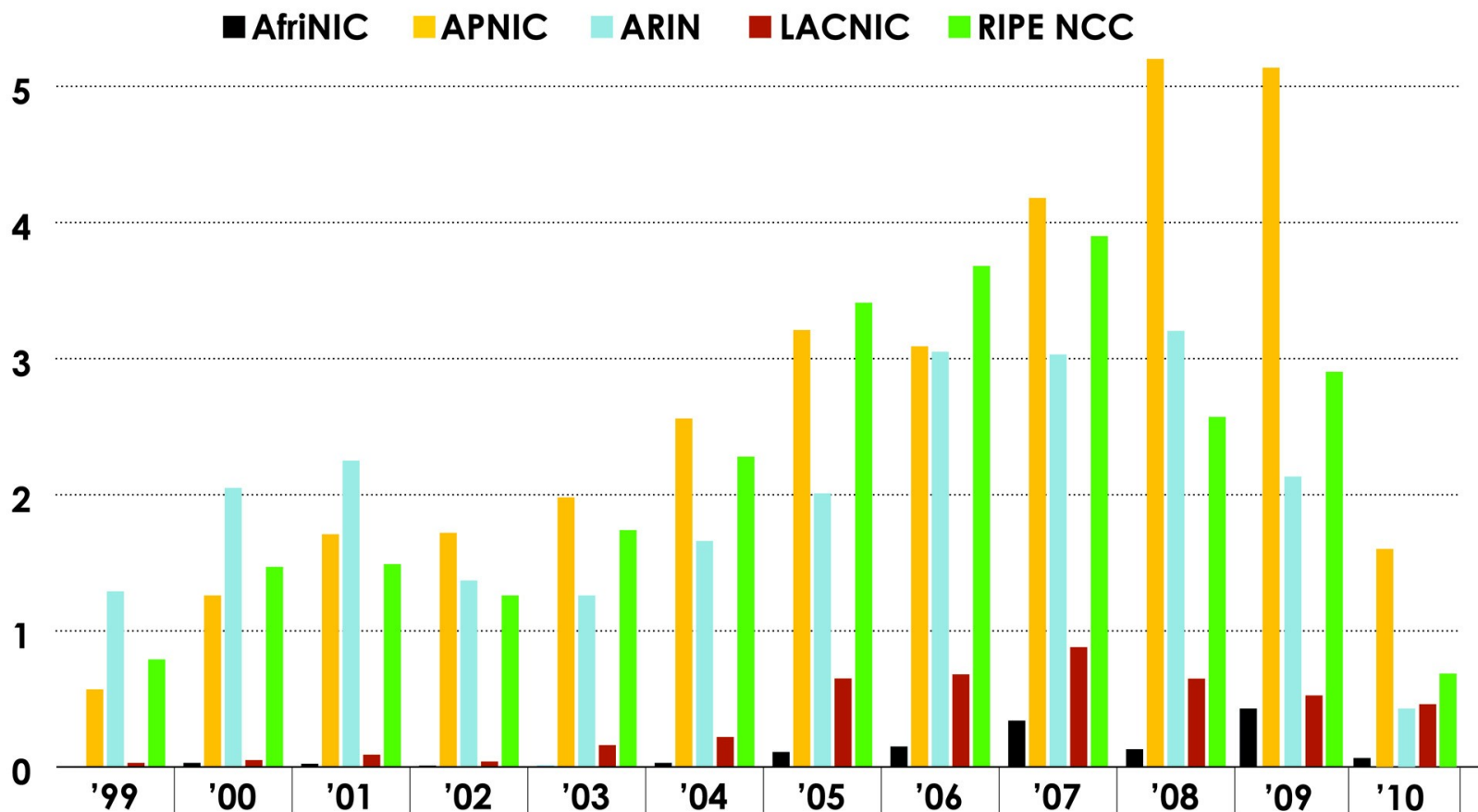
STATUS OF 256 /8s IPv4 ADDRESS SPACE



IPv4 ADDRESS SPACE ISSUED (RIRs TO CUSTOMERS)

In terms of /8s, how much space did each RIR issue by year?

6 /8s

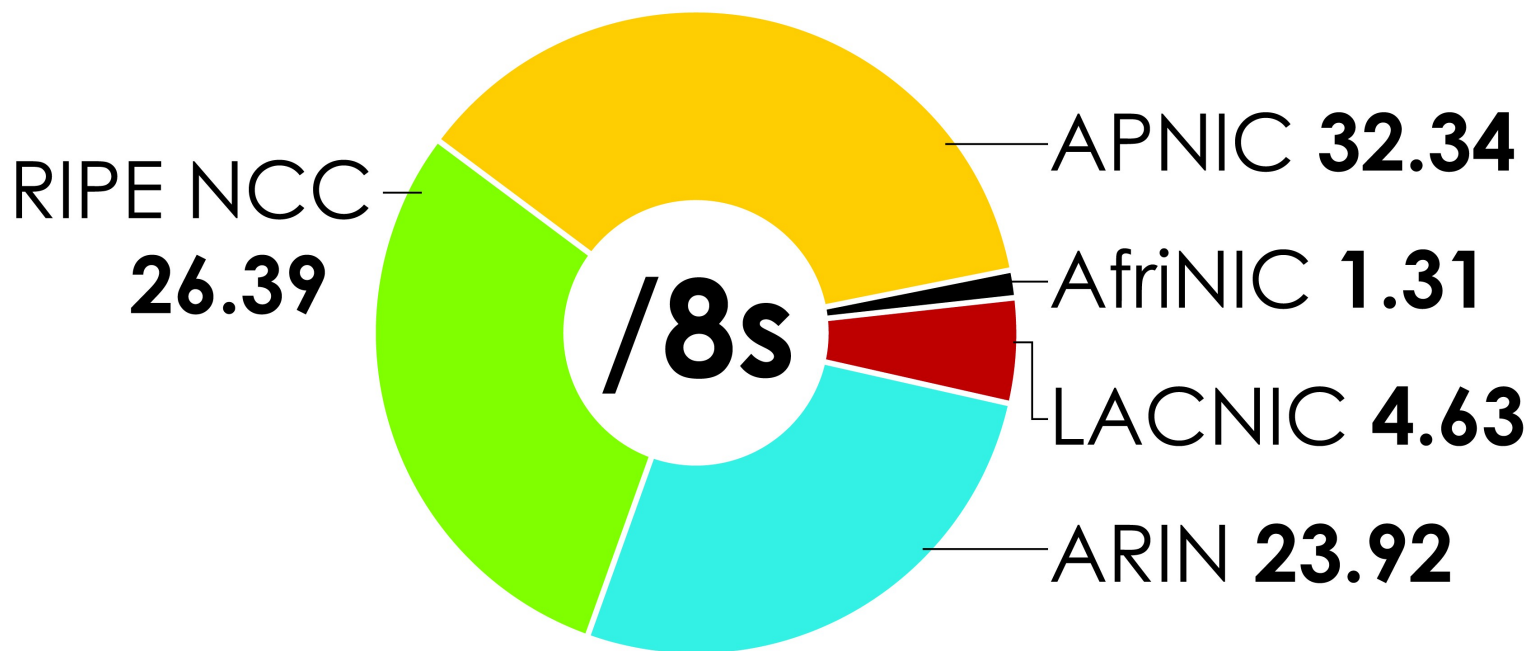


Number Resource Organization



IPv4 ADDRESS SPACE ISSUED (RIRs TO CUSTOMERS)

In terms of /8s, how much total space has each RIR issued?
(Jan 1999 – Mar 2010)

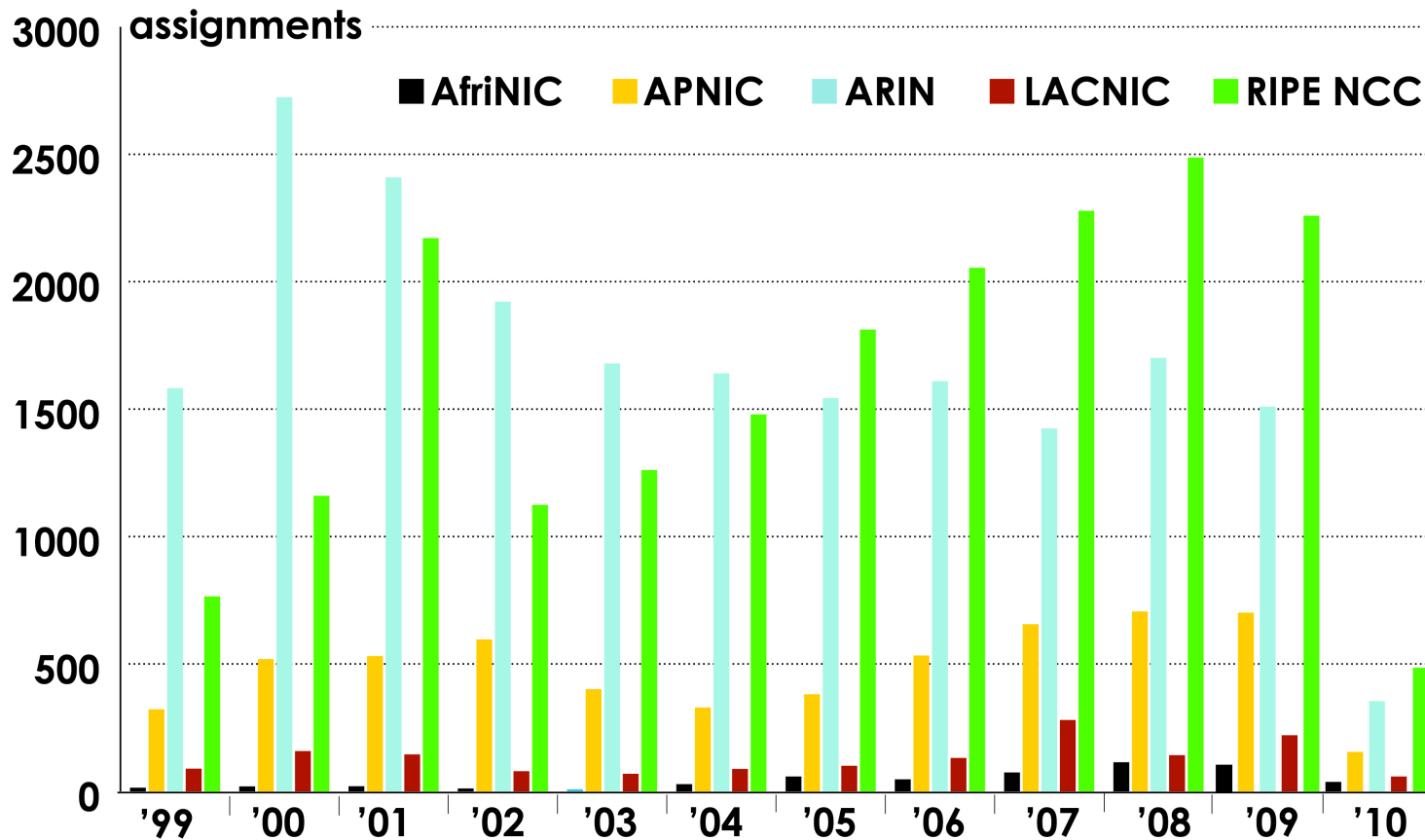


Number Resource Organization



ASN ASSIGNMENTS (RIRs TO CUSTOMERS)

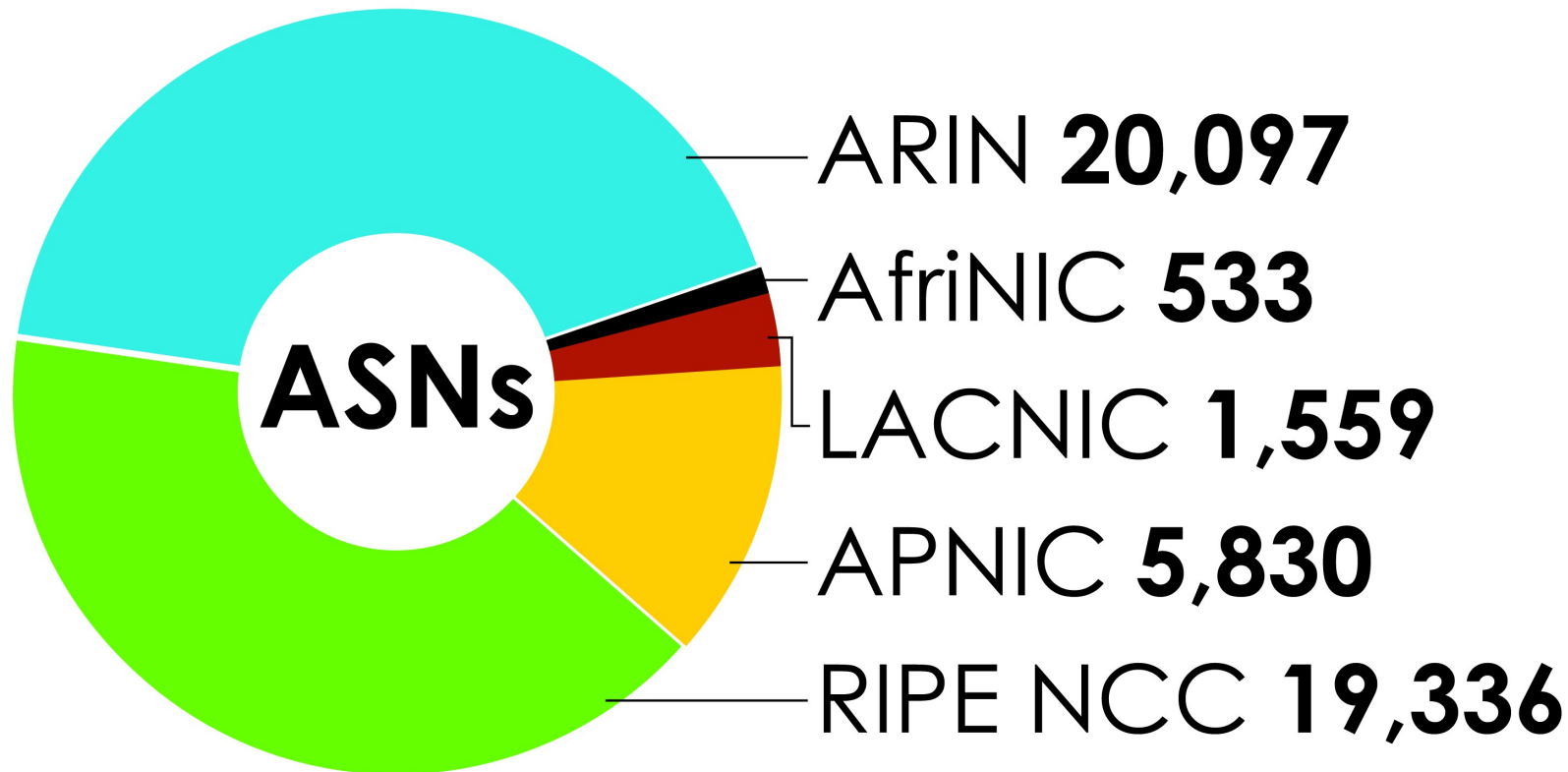
How many ASNs has each RIR assigned by year?



Number Resource Organization

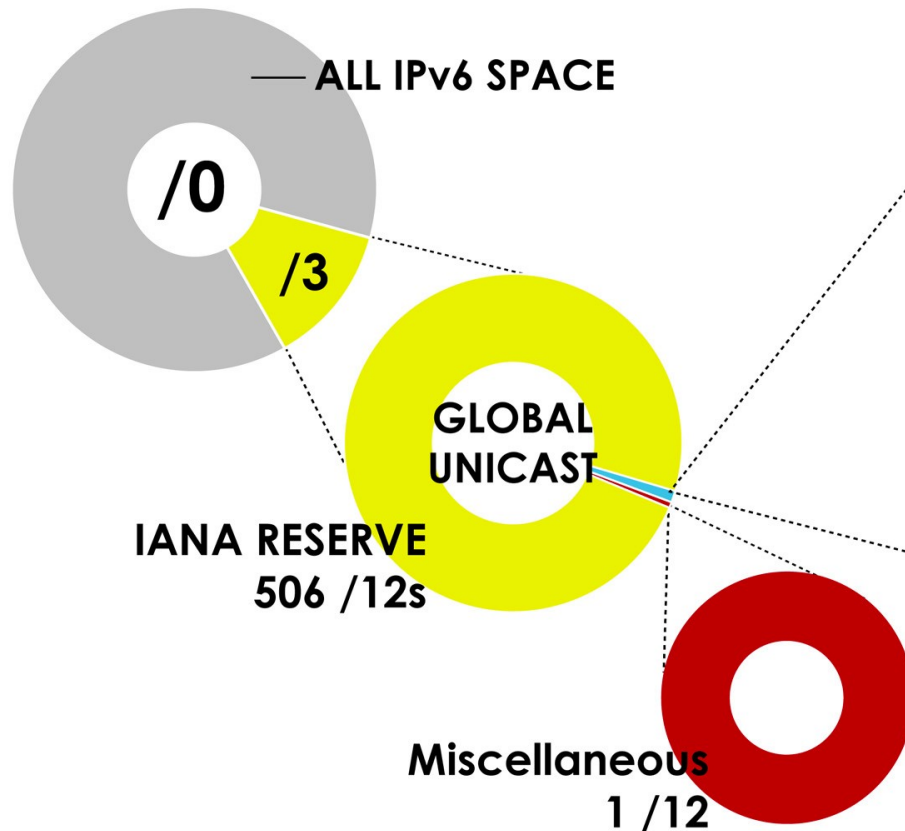
ASN ASSIGNMENTS (RIRs TO CUSTOMERS)

How many total ASNs has each RIR assigned?
(Jan 1999 – Mar 2010)



IPv6 ADDRESS SPACE

How much has been allocated to the RIRs?



RIRs 5 /12s (October 2006)

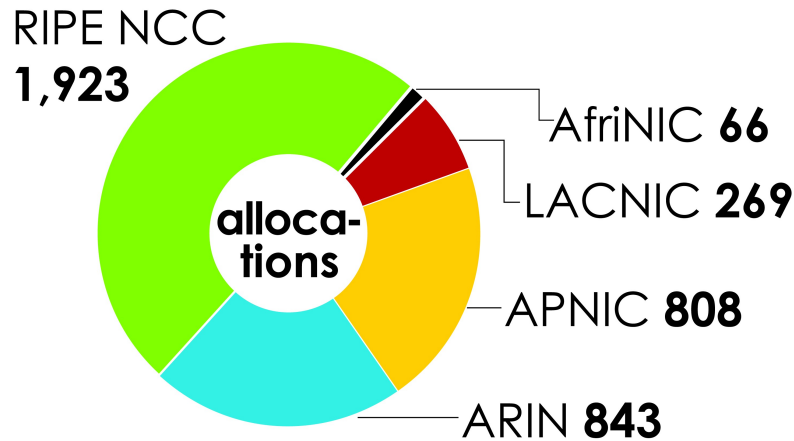
RIR	IPv6 ADDRESS
AfriNIC	2C00:0000::/12
APNIC	2400:0000::/12
ARIN	2600:0000::/12
LACNIC	2800:0000::/12
RIPE NCC	2A00:0000::/12



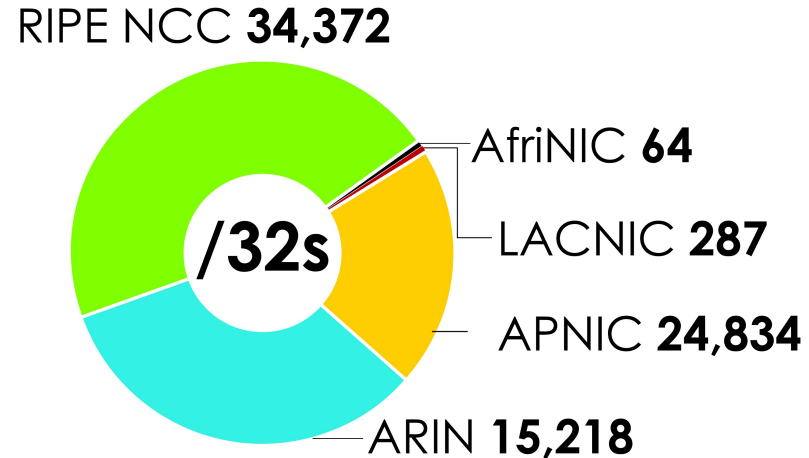
IPv6 ALLOCATIONS RIRs to LIRs/ISPs

(Jan 1999 – Mar 2010)

How many total allocations have been made by each RIR?



In terms of /32s, how much total space has each RIR allocated?



Number Resource Organization



LINKS TO RIR STATISTICS

- RIR Stats:
www.nro.net/statistics
- Raw Data/Historical RIR Allocations:
www.aso.icann.org/stats
www.iana.org/assignments/ipv4-address-space
www.iana.org/assignments/as-numbers
www.iana.org/assignments/ipv6-unicast-address-assignments

thank you