



RENAISSANCE MANCHESTER HOTEL

★★★★

MAP REF 56

Blackfriars Street, Deansgate,
Manchester M3 2EQ

Tel 44 (0) 161 831 6000

Guest/Conference/Sales Fax 44 (0) 161 833 0731

www.renaissancehotels.com/manbr
events.manchester@renaissancehotels.co.uk

Our dedicated conference and banqueting floor provides one of the largest and most flexible venues in City Centre Manchester. With its spacious breakout, registration and lounge areas, and integrated business and service facilities, you can be sure of creating exactly the atmosphere that your event deserves, whether its a large symposium, sales presentation or board meeting. Private dining, gala dinners or exquisite buffets can be arranged in any one of our nine meeting rooms. So whatever event you are planning, you'll find we have the flexibility that perfectly meets your needs.

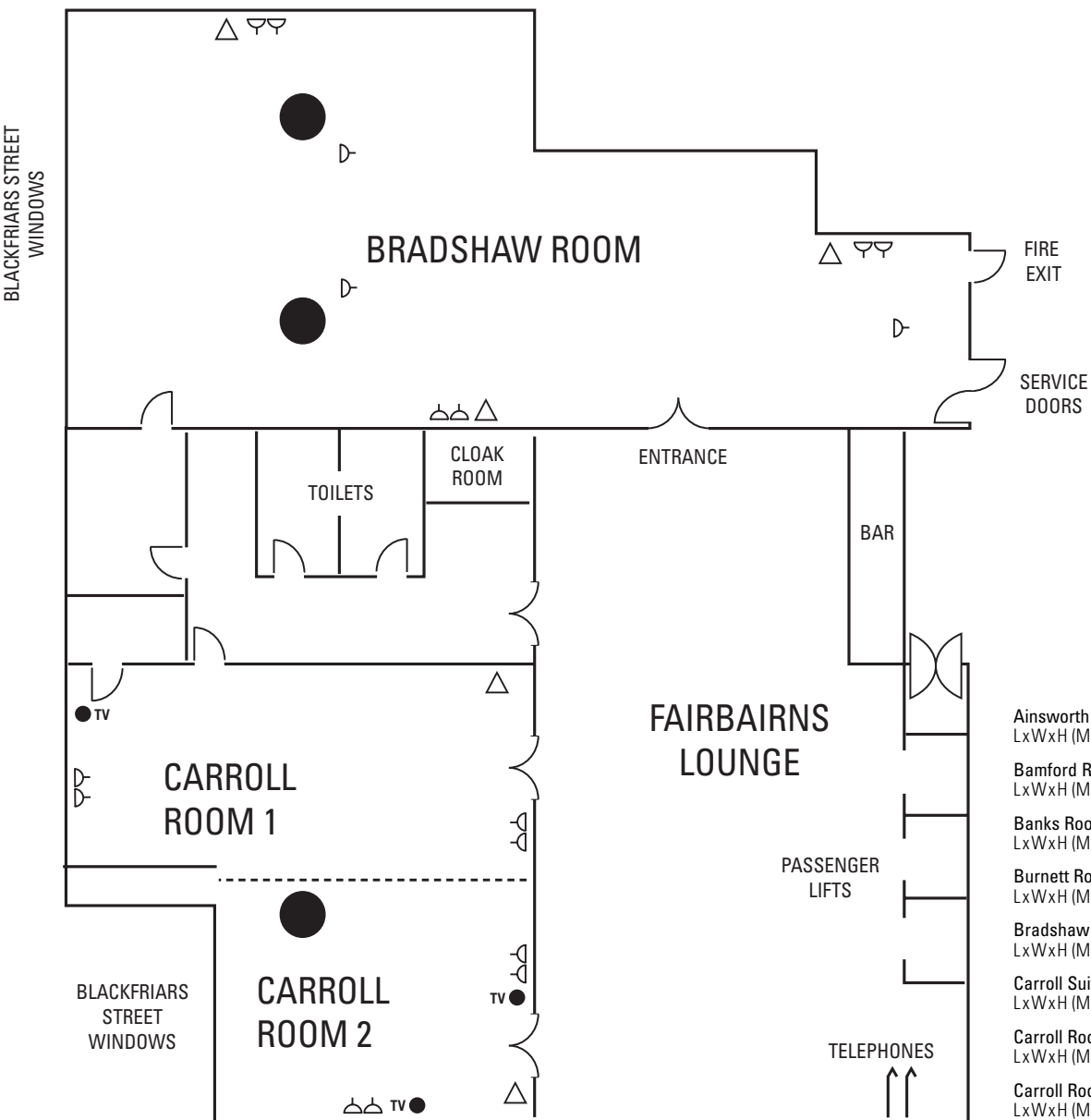
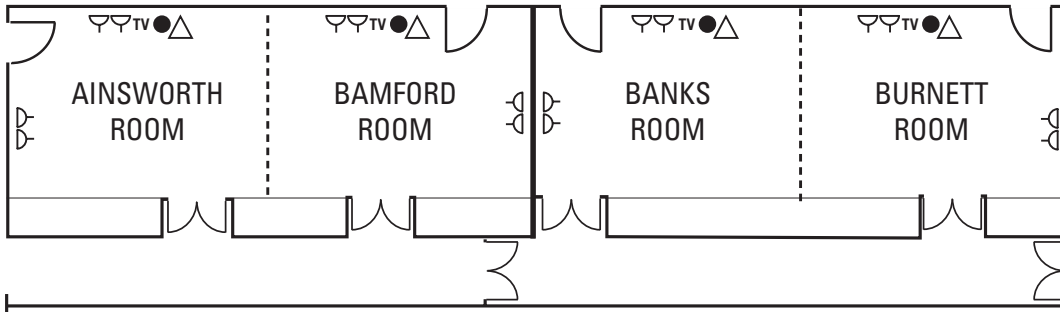
When you hold an event at Renaissance, you benefit from the support of a world class hotel group and our total commitment to helping you make the event an outstanding success. The experience of our sales team matched with the professionalism of our banqueting team will ensure that every organisational detail is taken care of, so you can concentrate on matters in hand.

To make things easier, we have the latest presentation technology available to hire, including digital projectors, back projection sets, ISDN lines and the technical assistance to make it all happen.

MEETING ROOMS	NATURAL DAYLIGHT	AIR COOLING	WHEELCHAIR ACCESS	DIMENSIONS (METRES)			MAXIMUM NUMBER OF DELEGATES								
							L	W	H	THEATRE STYLE	BOARDROOM STYLE	U-SHAPE	CLASSROOM STYLE	CABARET	BUFFET RECEPTION
				GRAND BALLROOM (1 & 2)	✓	✓	✓	17.8	22	3.4	400	100	80	300	210
BALLROOM (1)		✓	✓	11	15	3.4	180	72	60	130	130	160	150	180	
BALLROOM (2)	✓	✓	✓	11	20	3.4	220	80	65	130	136	180	180	210	
CARROLL SUITE (1 & 2)	✓	✓	✓	14	15	3.4	140	50	40	80	70	100	100	140	
CARROLL ROOM (1)		✓	✓	15	6	3.4	70	40	40	50	50	50	40	50	
CARROLL ROOM (2)	✓	✓	✓	10	8	3.4	60	30	30	40	40	50	30	50	
BRADSHAW ROOM	✓	✓	✓	11.7	26	3.4	100	48	40	60	70	150	150	200	
AINSWORTH ROOM		✓	✓	6.2	7.10	2.9	40	20	18	18	20	30	-	30	
BAMFORD, BANKS OR BURNETT ROOM		✓	✓	6.2	7.10	2.9	40	20	18	18	20	30	-	30	
AINSWORTH & BAMFORD ROOMS		✓	✓	6.2	14.2	2.9	80	44	36	45	48	70	50	70	
BANKS & BURNETT ROOMS		✓	✓	6.2	14.2	2.9	80	44	36	45	48	70	50	70	
SEYMOUR OR TUDOR SYNDICATE	✓	✓	✓	6.5	5.5		-	10	-	-	-		-	-	
HOWARD OR DRAKE SYNDICATE	✓	✓	✓	6.5	5.5		-	10	-	-	-		-	-	

QUICK REFERENCE GUIDE																								
NUMBER OF FLOORS	TOTAL NUMBER OF BEDROOMS	NON SMOKING BEDROOMS	SUITES	DISABLED BEDROOMS	THE MARRIOTT BEDROOM (REFER TO PAGE 7)	AIR COOLING IN BEDROOM	HIGH SPEED INTERNET ACCESS IN BEDROOM	FRIDGE IN BEDROOM	IN ROOM SAFE	24 HR ROOM SERVICE	LAUNDRY SERVICE	SAFE DEPOSIT AT RECEPTION	SECRETARIAL SERVICES	BUSINESS CENTRE	EXECUTIVE LOUNGE	GIFT SHOP	SHOE SHINE IN PUBLIC AREAS	VENDING MACHINES IN PUBLIC AREAS	ICE MACHINES IN PUBLIC AREAS	VALET PARKING	CONCIERGE	ONSITE CAR PARKING	FREE CAR PARKING	NUMBER OF PARKING SPACES
13	201	48	4	2	✓	✓	✓	✓	✓	✓	✓	✓	✓	✓	✓	✓	✓	✓	✓	✓	✓	✓	✓	80

RESTAURANTS & LOUNGES	RENAISSANCE LEISURE CLUB	PLACES TO SEE / THINGS TO DO	SPECIAL ACTIVITIES
<ul style="list-style-type: none"> Restaurant: Traditional dining with fine food & wine. Bar: Casual dining sports brasserie and bar. 	<i>Complimentary:</i> Nearby leisure facilities.	<ul style="list-style-type: none"> Palace Theatre Trafford Shopping Centre Bridgewater Hall Imperial War Museum 	

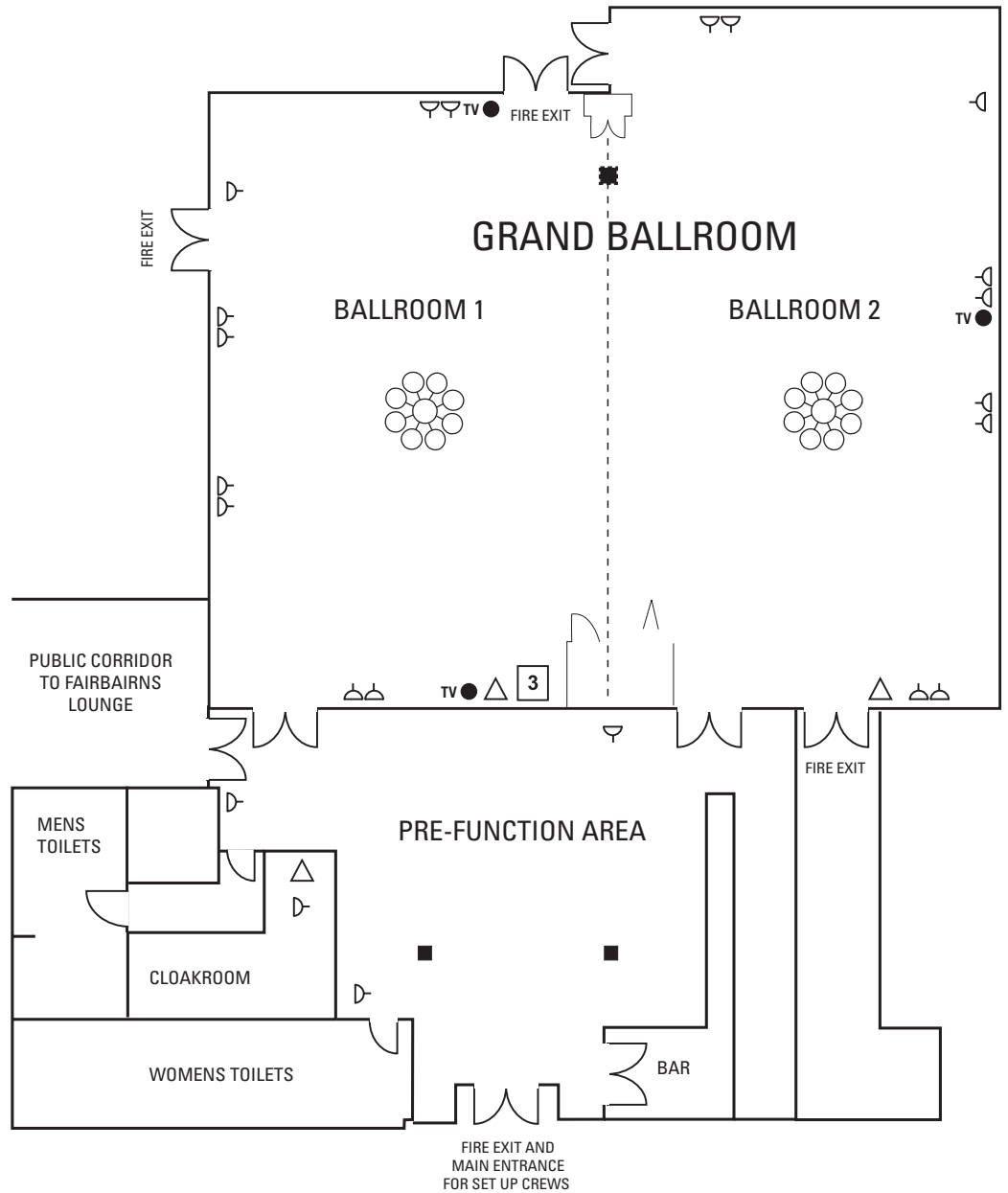


- Ainsworth Room**
LxWxH (M) 6.2 x 7.10 x 2.9
- Bamford Room**
LxWxH (M) 6.2 x 7.10 x 2.9
- Banks Room**
LxWxH (M) 6.2 x 7.10 x 2.9
- Burnett Room**
LxWxH (M) 6.2 x 7.10 x 2.9
- Bradshaw Room**
LxWxH (M) 11.7 x 26 x 3.4
- Carroll Suite (1 & 2)**
LxWxH (M) 14 x 15 x 3.4
- Carroll Room (1)**
LxWxH (M) 15 x 6 x 3.4
- Carroll Room (2)**
LxWxH (M) 10 x 8 x 3.4

POWER POINTS-13 AMP		TELEPHONE/FAX POINT	
THREE PHASE SUPPLY		PILLARS	
TV POINT		POWER (13 AMP)	
FEATURE LIGHT		ACOUSTIC MOVEABLE SCREEN	



SCALE: 1CM = 2 METRES (1:200)



Grand Ballroom (1 & 2)
LxWxH (M) 17.8 x 22 x 3.4

Ballroom (1)
LxWxH (M) 11 x 15 x 3.4

Ballroom (2)
LxWxH (M) 11 x 20 x 3.4



SCALE: 1CM = 2 METRES (1:200)

POWER POINTS-13 AMP		TELEPHONE/FAX POINT	
THREE PHASE SUPPLY		PILLARS	
TV POINT		POWER (13 AMP)	
FEATURE LIGHT		ACOUSTIC MOVEABLE SCREEN	

RENAISSANCE MANCHESTER HOTEL

★★★★

MAP REF 56

Blackfriars Street, Deansgate,
Manchester M3 2EQ

Tel 44 (0) 161 831 6000

Guest/Conference/Sales Fax 44 (0) 161 833 0731

www.renaissancehotels.com/manbr
events.manchester@renaissancehotels.co.uk

TRAVEL DIRECTIONS

By ROAD

From the East: M62/M60

Leave the Motorway at Junction 17 and proceed south down the A56. Pass the Manchester Evening News Arena towards the City Centre and proceed down onto Deansgate, pass the Cathedral and then take the 2nd right turn into Blackfriars Street. The hotel is situated on the right hand side.

From the West: M62/M602

Follow the M62 on to the M602 & A57 and proceed onto Regent Road. At the Junction of Regent Road/Water Street, proceed straight over and prepare to exit left on to Deansgate (A56). Follow Deansgate straight through and pass Kendals House of Fraser Department Store on your left. Turn left at the second set of traffic lights on to Blackfriars Street. The hotel is on the right hand side.

From the North: M61

Continue down the M61/M60 heading towards Salford and at the roundabout take signs for Manchester City Centre. Travel along Chapel Street until you come to Victoria Bridge Street. Turn right then right again on to Deansgate. At the next set of traffic lights, turn right and the hotel is on the right hand side.

From the South: M6/M56

Continue on to the M56 towards the city centre. At the roundabout take signs for St Peters Square. At the traffic lights past the G-Mex turn left in to Peter Street. Continue to the next major set of traffic lights and turn right on to Deansgate. Follow Deansgate, past Kendals on the left and then turn left at the second set of traffic lights on to Blackfriars Street. The hotel is on the right hand side.

BY RAIL

Victoria Station: 10 minute walk to the hotel or just 5 minutes in a taxi.

Piccadilly Station: 15 minute walk or just 10 minutes in a taxi.

Taxis are available from outside both stations.

BY AIR

Manchester International Airport: 30 minutes in a taxi or you can take a train from the airport to Piccadilly Station, which takes approximately 30 minutes.

