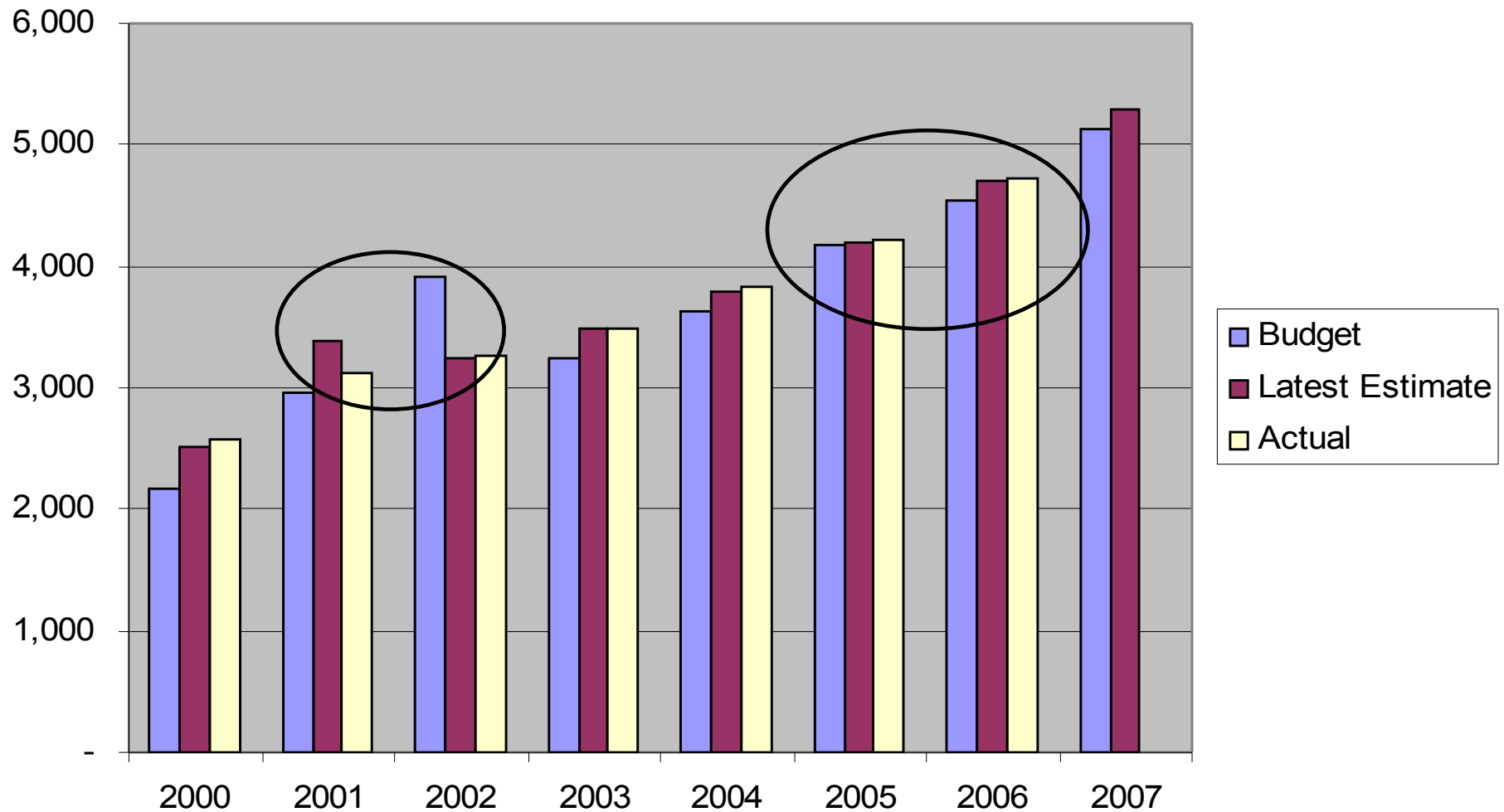




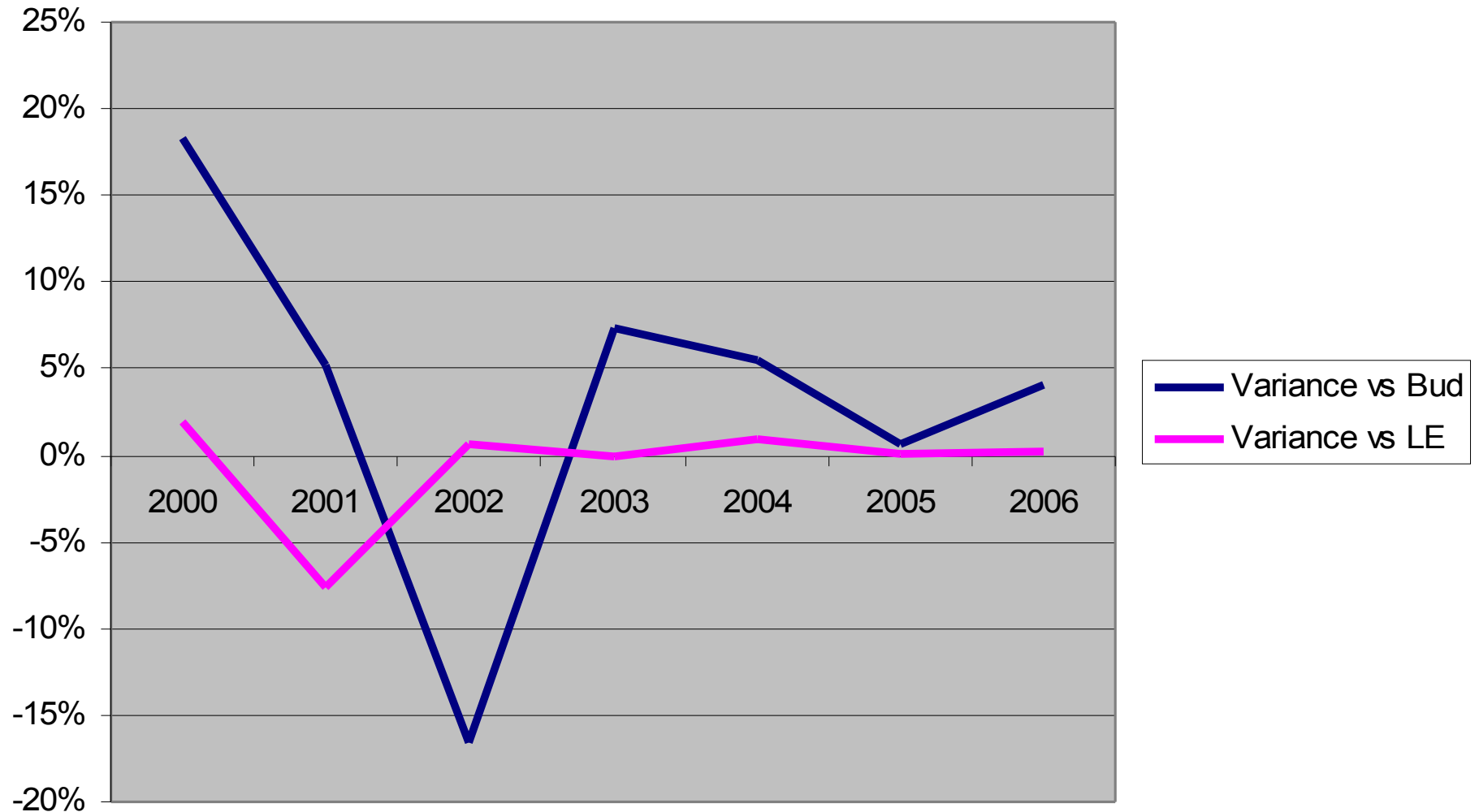
RIPE NCC Charging Scheme 2008

Jochem de Ruig
Chief Financial Officer

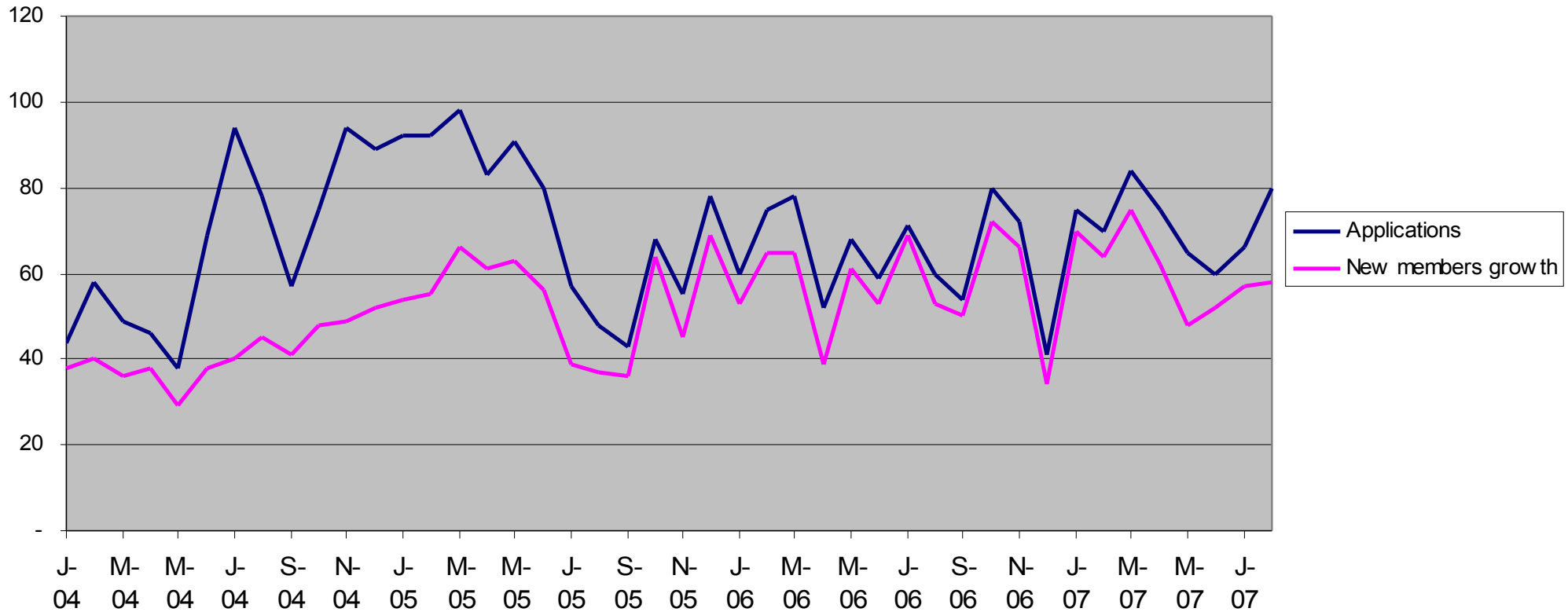
Forecasting at the RIPE NCC



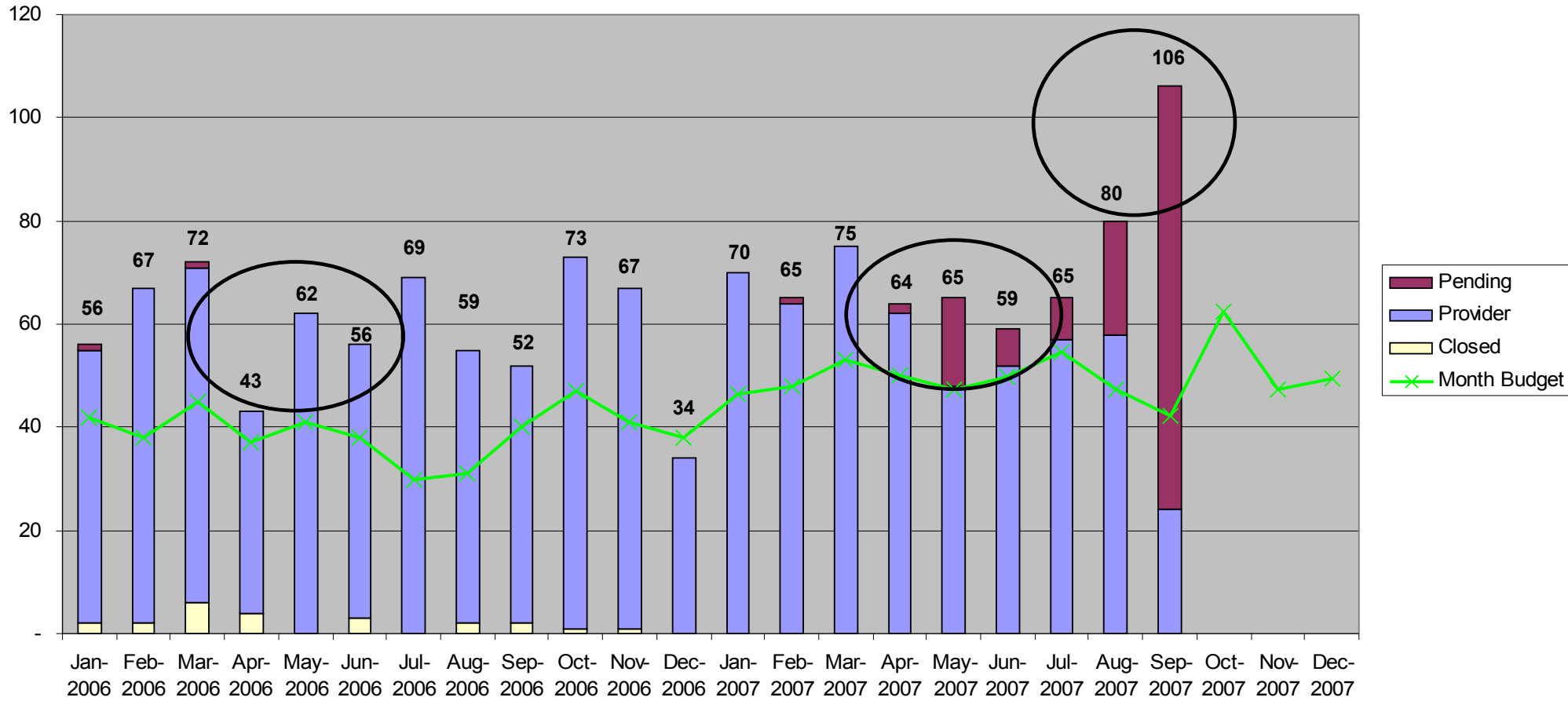
Forecasting at the RIPE NCC II



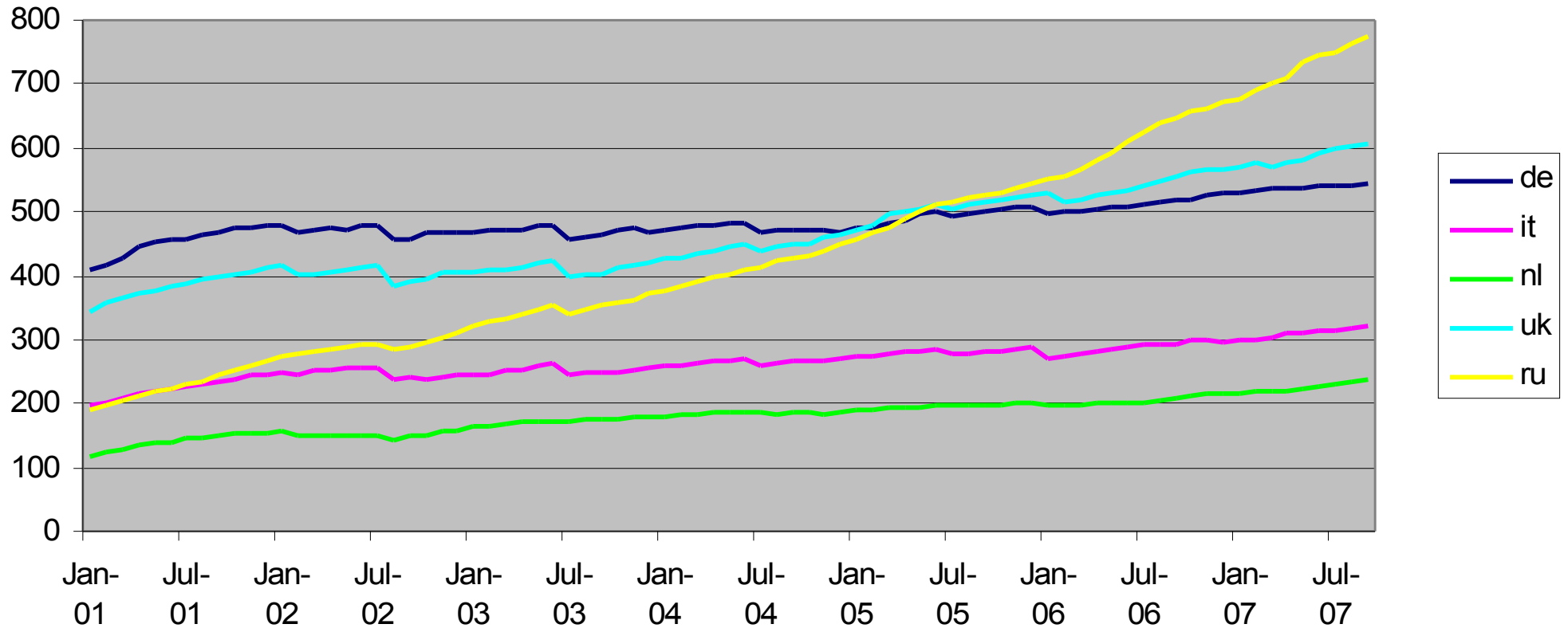
Membership growth I



Membership growth II



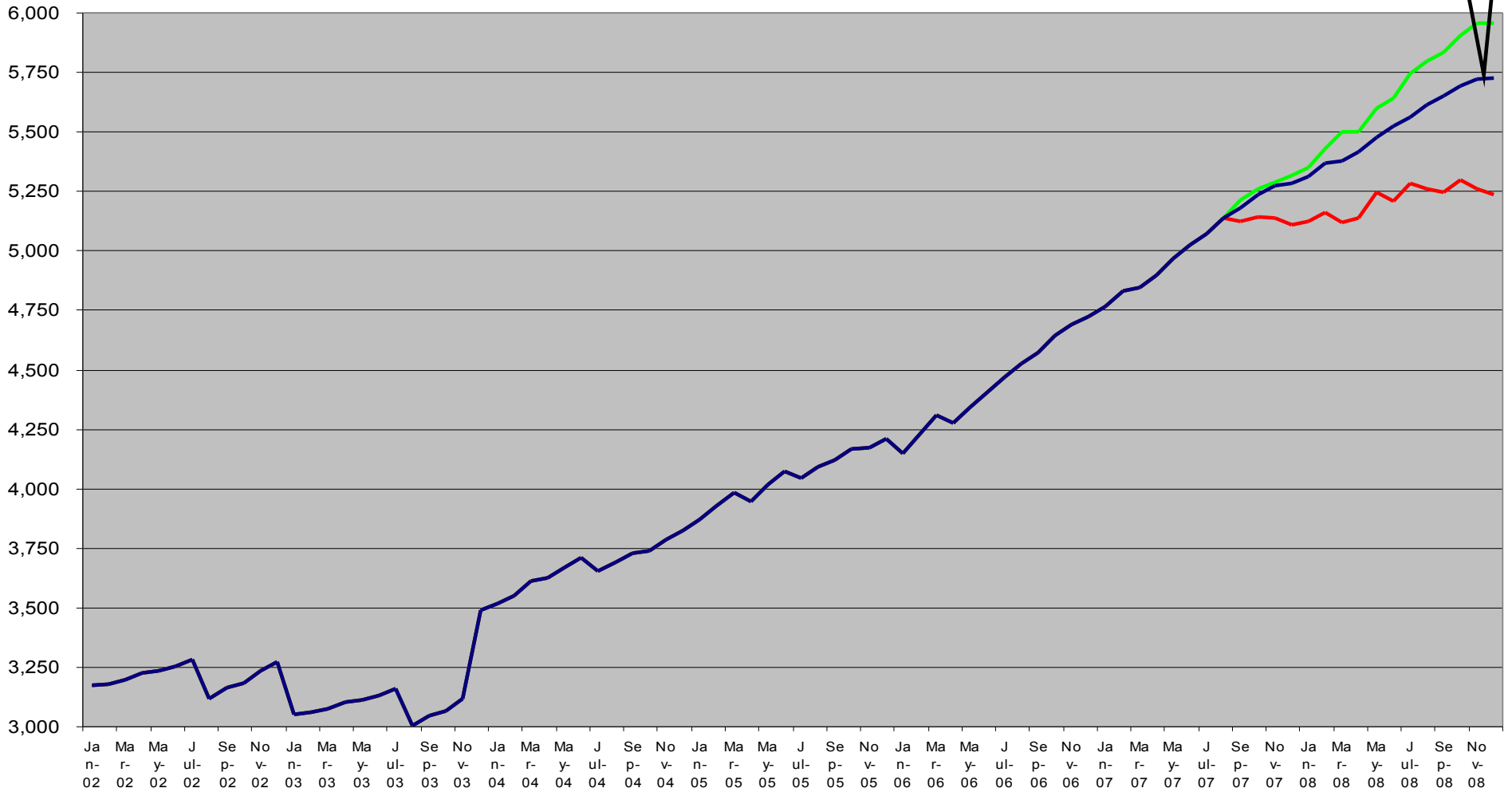
Top 5 countries 2001 – September 2007



Membership Growth Prediction

31 Dec
2008 5,722

Max Min RIPE NCC



Estimated Membership 2008

No of Regs	2004	2005	2006	Projection 2007	Est. 2008
Extra Small	766	1,366	1,553	1,866	1,560
Small	2,126	1,971	2,202	2,328	2,862
Medium	749	697	768	876	1,041
Large	144	137	160	177	208
Extra Large	39	39	39	44	52
Total Membership	3,824	4,210	4,722	5,291	5,722
Net growth %	10%	10%	12%	12%	8%



Charging Scheme 2008

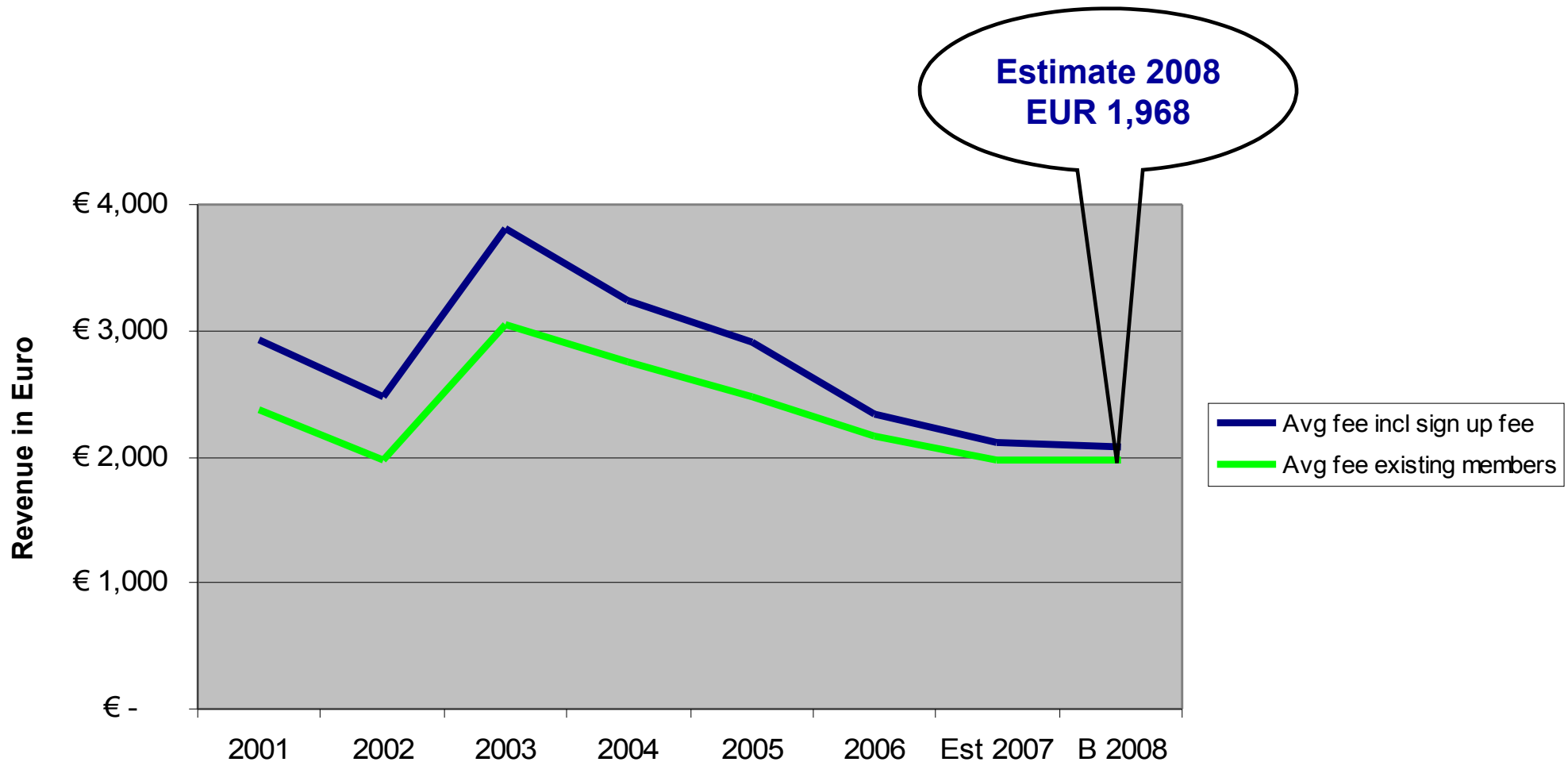
- Service Fee will remain the same as 2007
- No Rebate towards members
- No changes to the billing score algorithm
- No changes to the billing category boundaries

Service Fees 2008

In EUR

Size	2004	2005	2006	2007	2008	Per Q	Per HY
Extra Small	2,000	1,750	1,500	1,300	1,300	325	650
Small	2,500	2,250	2,000	1,800	1,800	450	900
Medium	3,500	3,150	2,750	2,550	2,550	638	1,275
Large	5,000	4,750	4,250	4,100	4,100	1,025	2,050
Extra Large	6,750	6,500	5,750	5,500	5,500	1,375	2,750
Sign up fee	2,500	2,000	2,000	2,000	2,000	-	-
Admin fee	-	1,250	1,000	1,000	1,000	-	-

Average Fee development 2001 – 2008



Questions?