

RIPE Labs

Operators Tools and Data

TERENA TF-CPR, Utrecht, 10 February 2011

Mirjam Kühne, RIPE NCC



A bit of History

- RIPE NCC started as a coordination center for the RIPE community
 - RIPE Database, mailing lists, meetings
- Only later it became a Regional Internet Registry
 - one it was accepted as a neutral place
 - providing a platform for operators to coordinate their activities

RIPE Labs - Back to the Roots

What is RIPE Labs?

- It is a web site, but more importantly:
 - It is a platform and a tool **for the community**
 - Launched in Sept. 2009, major update in June 2010
- You can:
 - Test and evaluate new tools and prototypes
 - Contribute new ideas and research results
 - Provide feedback and discuss with others

<http://labs.ripe.net>

Why RIPE Labs

- Faster, tighter innovation cycle
 - Provide useful prototypes early in the development
 - Adapt to changing environment and requirements more quickly
- Closer involvement of the community
 - Openness
 - Make it easier and more effective to provide feedback and suggestions

RIPE Labs Homepage

Project Pages

Twitter Feed

Tag Cloud

Comments

My Folder

Articles

The screenshot shows the RIPE Labs homepage with a blue header featuring the RIPE NCC logo and a search bar. A yellow navigation bar contains 'RIPE Labs', 'Mirjam Kühne', 'Log Out', and 'My Folder'. A breadcrumb trail reads 'Home • Users • Data Repository • RIPE Database • About'. Below this, a 'You are here: Home' indicator is present. A large banner for 'RIPE Labs' includes a lightbulb icon, the text 'Innovative Internet tools & ideas', and three bullet points: 'Share experience', 'Showcase tools', and 'Present research'. The main content area has a toolbar with 'contents', 'view', 'edit', 'syndication', 'rules', 'sharing', 'display', and 'add new...'. The 'New contributions' section lists two articles: 'IPv6 CPE Surveys' by Mirjam Kühne (18 October 2010) and 'New Release of the Resource Certification System' by Alex Band (15 October 2010). A 'tagcloud' section displays various tags like 'api', 'apnic', 'arin', 'asns', 'cpe', 'dns', 'dnssec', 'database', 'netsense', 'pi', 'rex', 'ripe', '60', 'ripe', 'db', 'ripe', 'meeting', 'ripe', 'ncc', 'ris', 'rpsl', 'allocation', and 'atlas'. A 'Follow us on Twitter' section shows a tweet about a new resource certification system and another tweet discussing IPv4 addresses.



How Can RIPE Labs Benefit You?

- Get involved in developments from the start
- Influence new tools and services
- Interact and communicate with others in community faster and easier
- Contribute your own ideas, analyses and tools

Currently on RIPE Labs

tagcloud

cpe dns dnssec
database
rex rpsl atlas
certification
datarepository
ipv4 ipv6
measurements
policy reputation
ripestat
root-servers
routing
statistics
tools

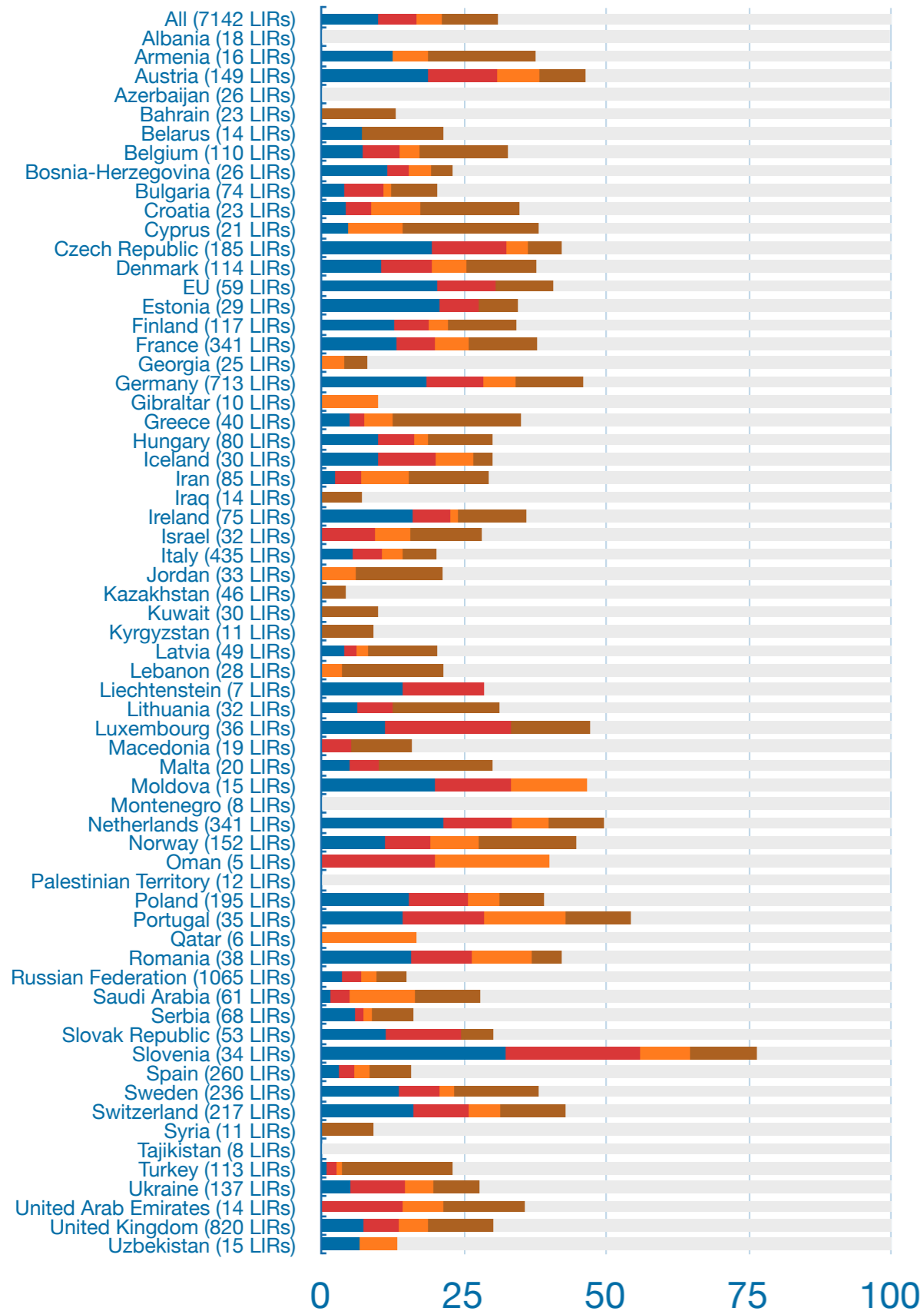
- IPv4 and IPv6 measurements
- DNS and DNSSEC related tools
- RIPE Database API and tools
- Statistics and Measurements
- Tools
- and much more...

IPv6 Customer Premise Equipment Survey

- Survey among CPE vendors
- Results will be updated regularly on RIPE Labs

	AVM (FRITZ!Box)	Draytek	Zyxel	Juniper (ScreenOS)	Juniper (JUNOS)	Cisco	D-Link
Hardware version required	7270, 7570	Vigor 2130 series, vigor 120	All models released in 2010	All	All	Most SOHO boxes	Most new boxes
Minimum software level required	"Labor" only	2130:v1.3.0 120:v3.2.4.3	Per model, check vendor	6.1	10.2	12.4T or 15	see notes
Status	Beta	General deployment	Beta	General deployment	Early deployment	General deployment	General deployment
WAN layer 2							
Docsis 3.0	vendor	no	no	no	no	-	-
ADSL 2+	confirmed	120 only	vendor	confirmed	confirmed	confirmed	no
VDSL	confirmed	no	vendor	no	vendor	-	no
Ethernet	confirmed	vendor	vendor	confirmed	confirmed	confirmed	confirmed
FTTx	-	vendor	vendor	no	no	-	no
WAN Layer 3							
PPPoA	confirmed	no	vendor	no	vendor	confirmed	no
PPPoE	confirmed	confirmed	vendor	confirmed	confirmed	confirmed	vendor
RFC1483/bridge	vendor	no	vendor	no	no	vendor	no
RFC1483/routed	-	-	vendor	vendor	vendor	vendor	no
Plain IP	-	vendor	vendor	confirmed	confirmed	confirmed	no

IPv6 RIPEness

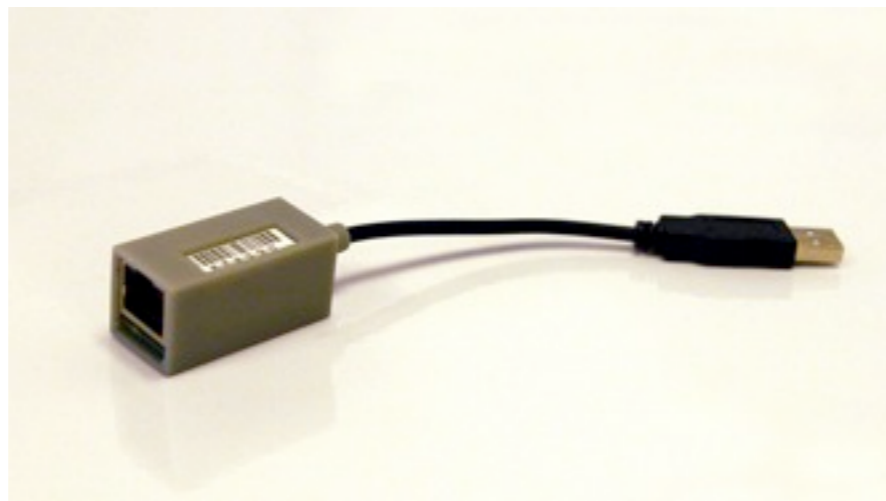


- Only listing countries with 5+ LIRs
- Large variation between countries
- Overall
 - 27% have at least 1 star
 - 73% still have 0 stars

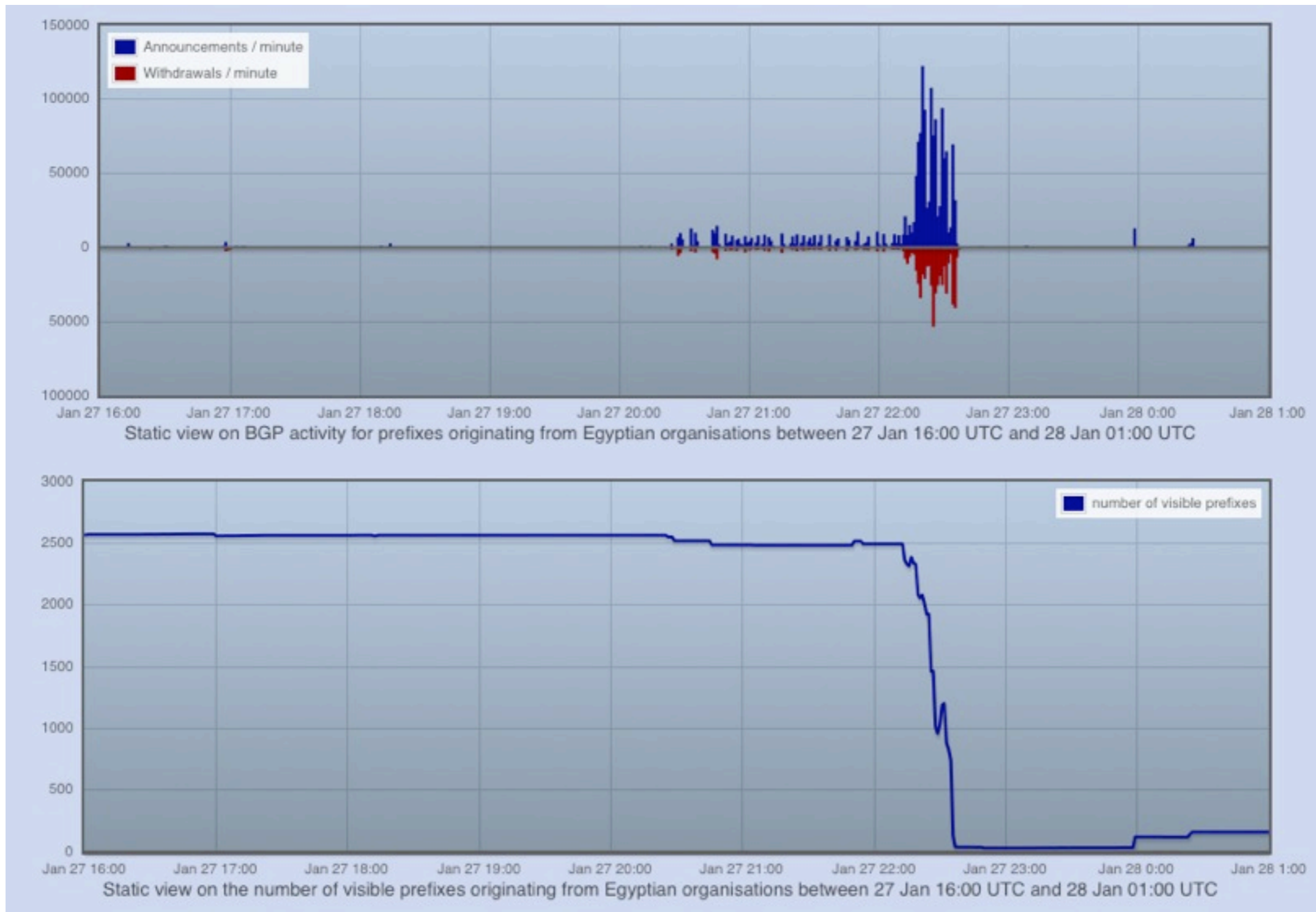


RIPE ATLAS - Active Measurements

- New project to build next generation Internet measurements prototype
- Aim to support 110k (or more) measurement nodes around the Internet
 - can be hosted by ISPs, IXPs, individuals...
- Will be presented at RIPE 61
 - probes will be distributed starting in November



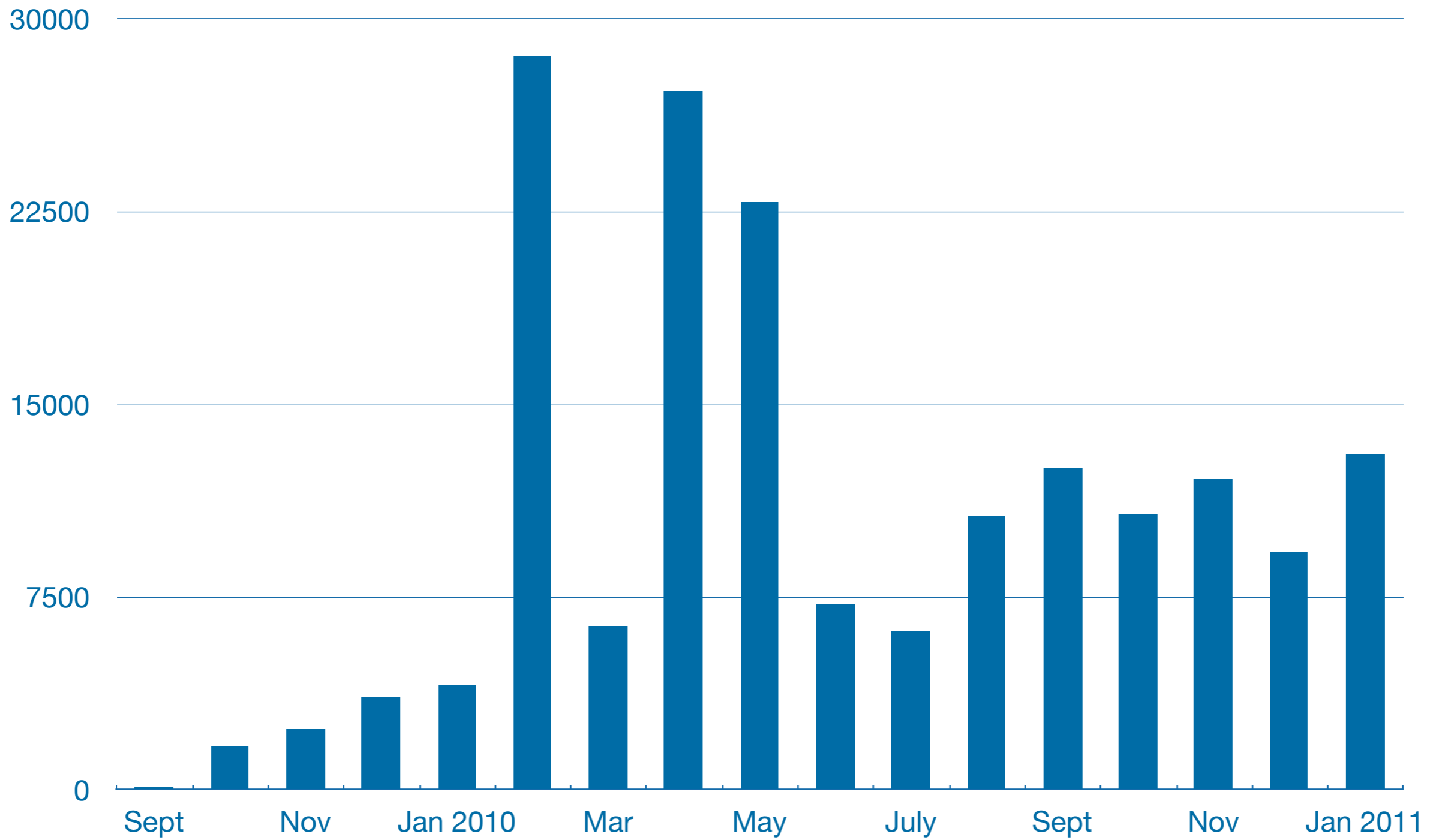
RIPEstat - New Tool



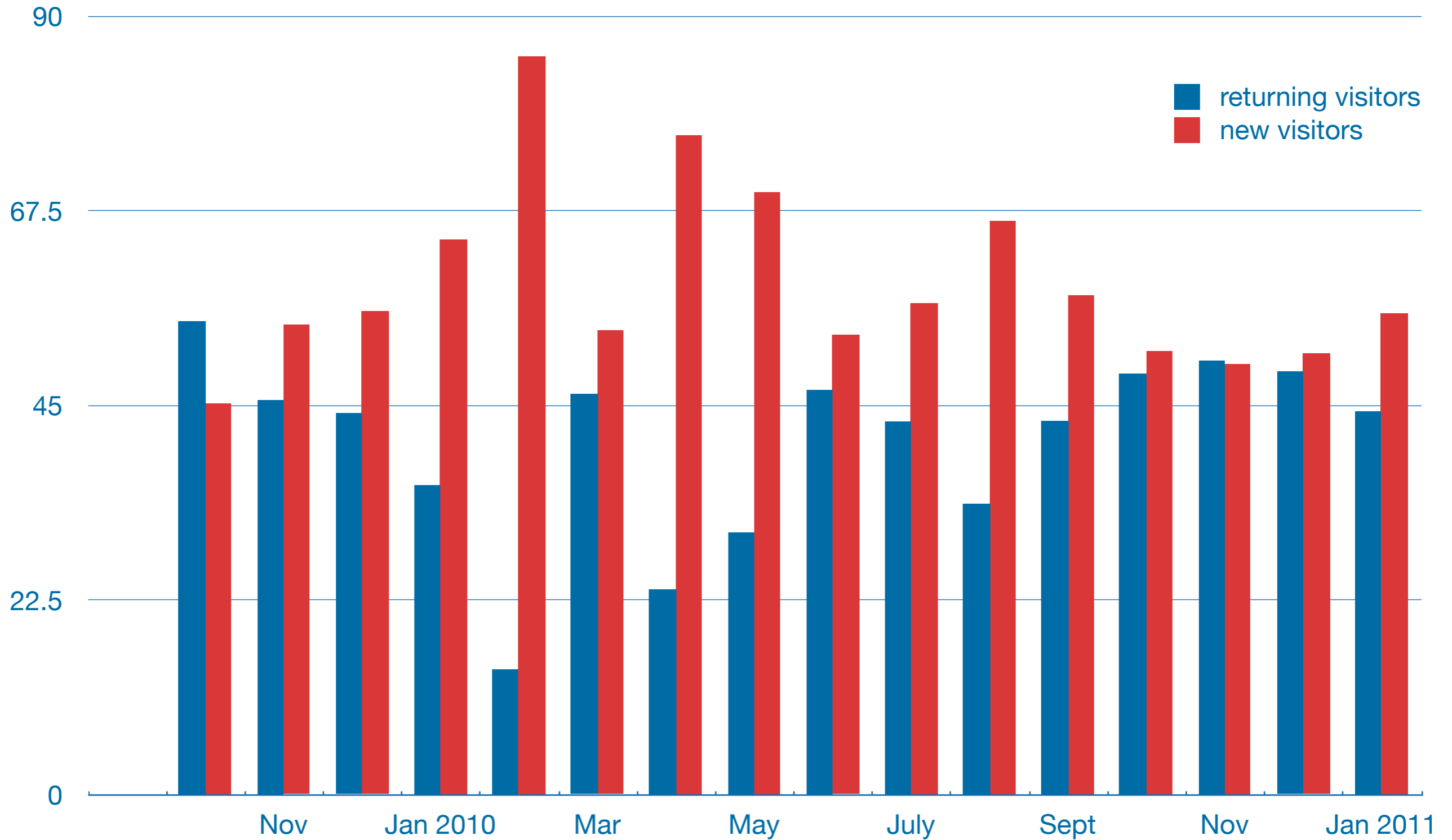
Community Building

- Each article gets announced via
 - Social Media: Twitter, Facebook
 - RIPE WG mailing lists and other mailing lists
 - TERENA community news
- Presentations at various conferences and operators meetings worldwide
- RIPE Labs became a known place for interesting content and presentation of new ideas

Number of Unique Visitors



Returning vs. New Visitors (%)



Suggestion and Questions

- Please take a look and **participate**
- Leave a comment under an article
- Questions and suggestions to **labs@ripe.net**

<http://labs.ripe.net/>

Questions?

